

WHEELLOCK  
FAMILY  
THEATRE

# A L L I C E



**October 17-  
November 16**



ASL/Audio Description:  
11/14 & 11/16

Art by Charles G. Baldwin





**BEST  
CHILDREN'S  
HOSPITALS**

& WORLD REPORT  
**U.S. News**

**HONOR ROLL  
2012-13**



**Boston Children's Hospital  
Community of Care is there –  
no matter where it hurts.**

Whether for a simple treatment or a complex procedure, you want the best care for your child. You want Boston Children's Hospital Community of Care. Our Community of Care includes satellite locations, affiliated hospitals and over 400 pediatricians across the state. To learn more, visit [bostonchildrens.org/until](http://bostonchildrens.org/until)



**Boston  
Children's  
Hospital**

Until every child is well™

BEVERLY | BOSTON | BROCKTON | LEXINGTON | MANCHESTER, NH | METHUEN  
NORWOOD | PEABODY | WALTHAM | WEYMOUTH | WINCHESTER



October/November 2014

Welcome to WFT's 34th season of producing high-quality theatre that is accessible and inclusive. Like the characters in our plays, WFT continues on an exciting journey in which the past informs the present. In 1981 the founders of the Theatre launched their first production, *Alice's Adventures in Wonderland*. The script was adapted by Anthony Hancock from Lewis Carroll's whimsical classic. Jane Staab wrote the music and Susan Kosoff directed the show. It is thrilling to see Carroll's iconic Alice reimagined and directed by WFT veteran Andrew Barbato, who writes:

Four years ago, I spent the summer locked away in the Stoneham Theatre basement with a small tribe of creatively charged young artists. We hung clip lights to the ceiling, hot glued costumes together, acquired a lovely old ladder from a sweet old man on Craigslist, and, thus, **Alice** was born. The show has grown up quite a bit since then. **Alice** had an award-winning run in New York's Midtown International Theatre Festival and is now being brought to new heights by the professional artists at WFT! But no matter how far this show sails, underneath the beautiful stage and behind the cellar door you will find that tiny tribe of young artists who spent the summer dragging a dream into reality. Nothing's Impossible.

In January, **Pinocchio** meets Tokyo. WFT presents an original adaptation of Carlo Collodi's beloved tale of the puppet who longs to be a real boy. Set in Japan, the production is influenced by traditional theatre, music, puppetry, and dance forms. This enchanting play has a contemporary edge that will surprise and delight you.

We are thrilled to be part of the world premiere of the *Ware Trilogy* (produced for the first time in one city in collaboration with Emerson Stage and Central Square Theatre), written by one of our nation's most renowned playwrights for family audiences, Suzan Zeder. **The Taste of Sunrise** is a bilingual play—performed in American Sign Language and spoken English—that takes place in the mind and memory of Tuc. We follow his journey from childhood and the fever dream that took his hearing, to the language of nature that he shares with his father, to the Deaf school where his horizons expand with the discovery of sign language.

We end our season with the Broadway smash hit **Shrek**, based on the irreverent book by William Steig and the wildly popular animated film by DreamWorks. This exuberant musical examines our culture's perceptions of beauty and celebrates its unforgettable cast of characters for who they are, warts and all.

Join the extended family of WFT as a patron, volunteer, or donor. Become part of our journey, as we present stories—new and old. Experience the power of live theatre that challenges us artistically, intellectually, and emotionally to view the world in fresh and dynamic ways.

Wendy Lement and Shelley Bolman  
Co-Artistic Directors



**Mail:** 200 The Riverway, Boston, MA 02215-4176

Tickets and Subscriptions  
Classes  
Casting  
Donations  
Volunteer Opportunities  
Theatre Espresso

617.879.2300  
617.879.2252  
617.879.2235  
617.879.2252  
617.879.2147  
617.879.2148

tickets@wheelock.edu  
jbay@wheelock.edu  
sbolman@wheelock.edu  
kelliott@wheelock.edu  
cbaldwin@wheelock.edu  
kadams@wheelock.edu

**Web:** [www.wheelockfamilytheatre.org](http://www.wheelockfamilytheatre.org)



# The arts are for everyone

When community members support the arts, they help inspire and enrich everyone. Artistic diversity helps unite communities, creating shared experiences and inspiring excellence.

- Bank of America is honored to be connected to Wheelock Family Theatre and its dedication to bringing the arts to our community.

Visit us at [bankofamerica.com/massachusetts](http://bankofamerica.com/massachusetts)

Life's better when we're connected®

©2014 Bank of America Corporation | ARLJT8GF

**Bank of America** 



Learn more at [www.parthenon.com](http://www.parthenon.com)

 **PARTHENON**

Parthenon is a proud sponsor of the **Wheelock Family Theatre**.

#### About Parthenon and EY

Parthenon combined with Ernst & Young LLP on August 29, 2014. Parthenon is a leading advisory organization focused on strategy consulting. We are committed to combining our unconventional thinking with our clients' smarts to deliver actionable strategies. In today's complex business landscape, creativity has become a necessary ingredient for sustained success. Together with EY, we have an ideal balance of strengths - specialized expertise with broad executional capabilities, intimate client relationships with larger networks of support, and proven processes along with a progressive spirit - to unlock opportunity for our clients, amplify the impact of our strategies, and make Parthenon the global partner of choice for business leaders.







For more information, check out our Actors' Spotlight  
[www.WheelockFamilyTheatre.org/our-actors](http://www.WheelockFamilyTheatre.org/our-actors)

**Andrew Barbato (Writer/Director)** is over the moon to be making his professional directorial debut at WFT! Favorite roles on this stage include Bilbo Baggins (*The Hobbit*), Cat in the Hat (*Seussical*), Jack (*Lord of the Flies*), and Peter Pan (*Peter Pan*). Andrew has written two other musicals: *The Tortoise and the Hare* (on iTunes!) and *Jack and the Giant* (touring through schools in New York and Connecticut this spring!). He has performed on Disney Cruise Lines and has had wonderful adventures as an organic farmer through WWOOF-USA. Andrew will be appearing in *The Little Prince* this winter at New Rep. He is eternally grateful to Lesley DeSantis (his magical writing partner), WFT, Stoneham Theatre, Laura Graczyk, Mom, Dad, JB, Jane Staab, and the entire *Alice* team! For more info on this curious human, go to [www.andrewbarbato.com](http://www.andrewbarbato.com). He dedicates this show to Jennifer Greene.

**Leigh Barrett (Mother/Queen of Hearts)** is amazed to be a part of this incredible show. She was also seen at WFT as the Mother Abbess in *Sound of Music*. Most recently, Leigh directed and starred in *Closer Than Ever* at New Rep. She is the proud recipient of two Elliot Norton Awards and two IRNE Awards. Much love and gratitude to Andrew for this opportunity, for sharing his joy, and this trip down the rabbit hole. Love to HB and to her boys Nick and Matt!

**Stephen Benson (White Rabbit)** returns to WFT after appearing as Gollum in *The Hobbit* last season. He was a leading actor in Elliot Norton Award-winning productions of *Not About Nightingales* and *Dealer's Choice*. NY and regional credits include *Graduation Day*, *Six Degrees of Separation*, and *Kuru*. Boston credits include *Merchant of Venice*, *A Walk in the Woods*, 18 roles in *A Perfect Ganesh*, and leading roles in *A Midsummer Night's Dream*, *Oleanna*, and *Amadeus*.

**Jane Bernhard (March Hare, Alice U/S)** is so excited to return to WFT after playing Amber in *Hairspray*. Regional credits include the pre-Broadway production of *On the Town* (Barrington Stage); NY credits include NYMF (*Freilich and Benson Split the Keys*). She has also performed with Joe Iconis & Family at *Mr. Finn's Cabaret*. Jane is pursuing a BFA in Musical Theatre at Boston Conservatory. [www.janebernhard.com](http://www.janebernhard.com).

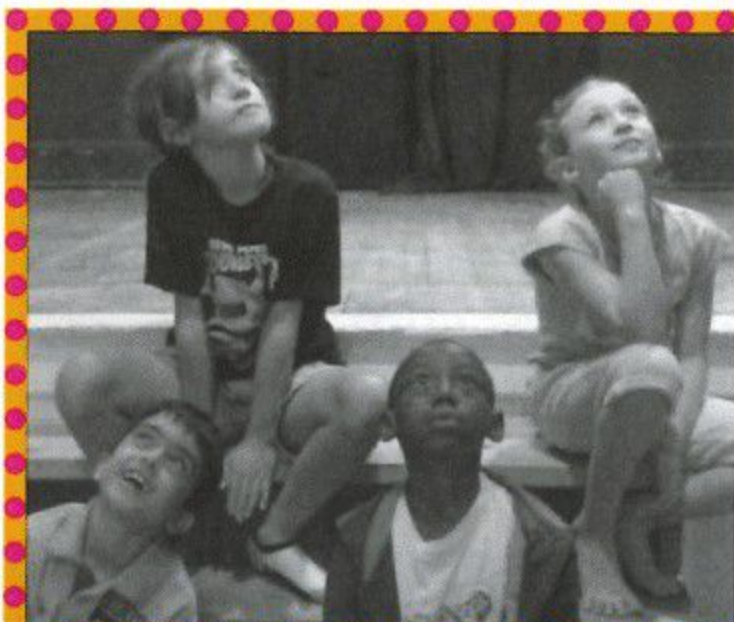
**Maritza Bostic (Alice)**, a Reading, MA native, is a proud member of Salem State's graduating class of 2014 with a BFA in Theatre Arts Performance. She was recently a finalist in KCACTF Region 1 Festival where she received the VASTA Award and Linklater Scholarship. Her recent credits include *Into the Woods* (Lyric Stage), *Hairspray* (WFT), *A Little Princess* (Fiddlehead), *Les Misérables* (Reagle), and *School House Rock Live!* (BCT).

**Letitia Nadine Bynoe (Sign Performer)**, a graduate of Northeastern's ASL/Interpreting program, has been working in various settings—from educational to theatrical—in Boston and in the Washington, DC area since 2008. This is Letitia's first time interpreting for WFT and she looks forward to making it a fantastic experience!

**Alba Clarke (Flower Bud)** is excited to return to WFT after appearing in *Pippi Longstocking* as a town kid. Other recent roles include Glinda in *The Wizard of Oz* and Tinkerbell in *Peter Pan* (Neverland) and a player in *Pippin* (BCT). Alba was born 12 years ago in Barcelona (Spain), attends Shore Country Day School in Beverly, and lives in Exeter, NH.

**Scott Clyve (Lighting Designer)** returns to WFT after designing *Hairspray*, *Seussical*, *The Miracle Worker*, and *Saint Joan*, among others. Local credits include *The Mystery of Edwin Drood* and *The Women* (SpeakEasy) and *Man of La Mancha* (2007 IRNE) and *Nicholas Nickleby* (2010 IRNE) (Lyric Stage). Broadway credits include *The Gathering* and the national tour of *Your Arms too Short to Box with God*. Scott is lighting director for Comcast's *Newsmakers* and a graduate of Purchase College at SUNY.

**Cori Couture (Audio Describer)** has described TV and movies for WGBH's Descriptive Video Service, and theatre for WFT, Open Door, and the Huntington. As WFT's Education Support Specialist, she provides individualized attention to WFT students, especially those on the autism spectrum. Cori created a one-woman show about how the arts helped her thrive while growing up with spina bifida. She is beyond grateful to have found a home among the spectacular people at WFT.



## Wheelock Family Theatre Education Program

**CLASSES REGISTERING NOW**

View complete listings and register online at

**[WheelockFamilyTheatre.org](http://WheelockFamilyTheatre.org)**

For more info: [kelliott@wheelock.edu](mailto:kelliott@wheelock.edu) • 617.879.2252



**Violet de Besche (Flower Bud)** is thrilled to be in her first WFT production! Credits include *Brundibar & But the Giraffe* (Ensemble, U/S Aninku), Central Square; *Grease Jr.* (Sandy) and Rogers & Hammerstein's *Cinderella* (title role), Menotomy; and *The Wizard of Oz* (Lullaby League/Jitterbug), ACT. Violet has soloed with several choirs and played marimba in South Africa and the US.

**Lesley DeSantis (Music and Lyrics)** met Andrew one fateful summer when he needed a pianist. Lesley became their summer camp's official musical theatre composer, hand-in-hand with her new-found musical-writing soulmate, and it has been an incredible journey ever since. She has been involved both onstage and backstage in school and community productions throughout her life and currently divides her time between the visual and performing arts. Creating *Alice*, *The Tortoise and the Hare*, and other musical dreams with Andrew has not only shown Lesley that she's able to express herself musically; it has helped her along on her own journey of relating to the world, finding her own garden, and realizing that growing up doesn't have to be as scary as it seems. She thanks friends, family, and everyone who has supported her own work and her creations with Andrew.

**Dash Evett (Tweedle Dee)** last played Colin in *The Secret Garden* (Stoneham). He has also appeared as Young Tom in *Camelot* (New Rep), Kurt in *The Sound of Music* (Concord Players), and one of Fagin's gang in *Oliver!* (Arlington Friends). He attends Sudbury Valley School and enjoys playing the guitar, making short films, and ultimate frisbee.

**William Gardiner (Mouse)** is delighted that his WFT debut is in this production of *Alice*. Local credits include Boston Theatre Works, NSMT, Stoneham, Boston Playwrights', Jewish Theatre of NE, and ASP. Favorite roles include Pseudolus (*Funny Thing...Forum*), Albany (*King Lear*), Feste (*Twelfth Night*), and Clarence (*It's a Wonderful Life*). Bill is currently the drama instructor at Boston University Academy.

**Russell Garrett (Mad Hatter)** returns to WFT where he was last seen as Archibald Craven in *The Secret Garden*. NE roles include Emperor Joseph II (*Amadeus*, IRNE nom.), New Rep; Ernst (*Cabaret*), Ogunquit; Col. Pickering (*My Fair Lady*, IRNE nom.), Stoneham; Bob Cratchit (*A Christmas Carol*), NSMT; and Phileas Fogg (*Around the World in 80 Days*, Playhouse on Park, BroadwayWorld Award). Russell has appeared extensively on Broadway and on tour with *The Scarlet Pimpernel*, *Show Boat*, and *A Chorus Line*, among others.

**Laura Graczyk (Assistant Director/Movement Coach)** is thrilled to be going down the rabbit hole with this production of *ALICE*. She has had the privilege of being involved with this musical from its very first performance in a cellar to its professional debut at WFT. She could not be more excited to see how far it's come. Laura holds a BFA in Musical Theatre from the Boston Conservatory. Thanks to Andrew, the cast and crew, and WFT for this opportunity. For kwg.

**Elbert Joseph (Caterpillar)** returns for a 19th show at WFT, where his roles have included objects large and small, humans, and animals that move well. Last seen here in *Mountain...Moon* (Great Green Tiger), EJ is thrilled to be part of this professional premiere of *Alice* with such a diverse and talented cast. Credits include the ART's *Uncle Vanya* and *The Lily's Revenge* and Central Square's *Arabian Nights*. Love and thanks to everyone who supports and believes in him!

**Emma Kahn (Flower Bud)**, an 8th grader from Brookline, is thrilled to be part of this cast and performing in her first production on the WFT main stage! She has appeared in numerous musicals with WFT's Advanced Performance Intensives, Freelance Driscoll Troupe/Freelance Players, and Creative Arts at Park. Favorite roles include an evil genius, a talking dog, an indecisive jelly fish, an art thief, and a sword-fighter extraordinaire.

**Juliann F. Khirallah (Flower Bud)** has been taking classes at WFT for many years and made her debut on the main stage here in *Pippi Longstocking*. She also dances at the Boston Ballet School and has appeared in The Boston Ballet's *Nutcracker*. Juliann enjoys swimming, playing the piano, reading, and singing.

**Anna Kraffmiller (Flower Bud)** is happy to return to WFT after appearing in *The Hobbit* (hobbit, spider) last fall. She also played Ermengarde St. John in *A Little Princess* (Metrowest Family) in the spring. Anna is in 7th grade at Kennedy Middle School in Waltham, where she is active in the drama club. Thanks to Mom, Dad, Laura, Caitlin, Emily, Ella, Andrew, Shelley, and Susan.

**Neel Anand Kumar (Flower Bud)** is a 5th grader at Kingsley Montessori School appearing in his second WFT production. He enjoys playing squash and guitar, composing music, building with Legos, and reading. One of Neel's dreams is to play a main character in a WFT production!

**Matthew T. Lazure (Set Designer)** has designed sets for New Rep, Gloucester Stage; KidStage, and the Gold Dust Orphans, among others. His designs for WFT include *Mountain...Moon*, *Pippi Longstocking*, *Oliver!*, and *The Secret Garden* (Elliot Norton nom.). Matthew's costume designs have been seen on the WFT stage most recently in *The Hobbit*. A Mass College of Art graduate, he shows his fine art in Boston, Provincetown, and online at [matthewlazure.com](http://matthewlazure.com).

**Susan Lombardi-Verticelli (Stage Manager)** is a working actor who occasionally spreads her wings backstage. Having worked on productions for the Travel Channel, TLC, and the History Channel, she is very excited to be back at WFT. Susan currently can be seen in local commercials, on national websites, and on tour with Theatre Espresso. She holds a Master's degree in Communication Studies. Susan is incredibly grateful to WFT for this amazing opportunity and to her husband, Seth, and daughter, Stella, for their unwavering support.

## Best Wishes and Continued Success LILLIAN GONZALEZ, CPA, MST, CSEP

14 Page Terrace, Stoughton, MA 02072

(781) 344-1040 FAX (781) 344-4449 [www.go-cpas.com](http://www.go-cpas.com)

### CERTIFIED PUBLIC ACCOUNTANTS

• ACCOUNTING • AUDITING • TAXES • FINANCIAL PLANNING • RETIREMENT PLANNING • ESTATE PLANNING



**Owen Lonergan (Flower Bud)** is a 5th grader at the J.W. Hennigan School in Boston. He enjoys Minecraft and *Doctor Who*. This is his WFT debut.

**Robin Long (Duchess)** is thrilled to be making her WFT debut. Boston credits include *Shear Madness*, *Ain't Misbehavin'* (Lyric Stage), and *Rent* (New Rep). Other credits include *Seussical*, *The Full Monty*, and *Cinderella* (Mariott); *Smokey Joe's Cafe* (Skylight); *Little Shop of Horrors* (Tampa Bay Performing Arts); *Tintypes* (Old School House); and *Why Do Fools Fall in Love?* (Milwaukee Rep). Robin is a member of Actors' Equity Association.

**Marjorie Lusignan (Props Designer)** is glad to return for a seventh season at WFT. After a 25-year career as a technical illustrator, she is now a visual artist who lives, gardens, and makes art in the woods of RI.

**Roger J. Moore (Sound Designer)**, employed with CBS Radio – Boston for over 20 years, is currently the Assistant Production Director and commercial voice of 98-5 The Sports Hub. He also enjoys a variety of freelance video production projects. Since 2004 Roger has worked with Ryan Landry & The Gold Dust Orphans as sound designer and stage manager (*Mildred Fierce*, *Phantom of the Oprah*, *Death of a Saleslady*). He has been part of the WFT family since 2008.

**Alexandra Nader (Cook)** is thrilled to be home at WFT after a five-year absence from this stage. She is also delighted to return to *Alice*; she was part of its first production in a small basement four years ago. Raised on the North Shore, Alexandra moved to NY at the age of 18 to study at the NY Conservatory. She is the proud creator of an original series made for the web: [www.TheUnder5ers.com](http://www.TheUnder5ers.com). Full credits at [www.AlexandraNader.com](http://www.AlexandraNader.com).

**Zoë Leah Parkin (Flower Bud)**, aged 9, is delighted to return to the WFT stage, following her appearances in *Pippi Longstocking* and *Mountain...Moon*. She loves taking classes here, and appreciates all the great opportunities at WFT. Zoë also loves dancing ballet, modern, and jazz at Deborah Mason School of Dance. Thanks to teachers, friends, and family for their support.

**Merle Perkins (Dormouse)** is always thrilled and grateful to be back at WFT, where her favorite roles include *Charlotte's Web* (Charlotte), *The Sound of Music* (Maria), and *My Fair Lady* (Eliza). Other credits include *Working* (Lyric Stage), *Caroline, or Change* (IRNE Award, SpeakEasy), and shows with Faith Soloway's Smell My Productions, Theatre Offensive, and Boston Playwrights'. Screen credits include *Six Feet Under* and *Mermaids*. Merle is a founding member of Urban Improv. Love to Peter, Cyrus, and Mom!

**Arianna Reith (Flower Bud)** is excited to be performing in her first WFT musical and third production here. She is a 6th grader at the Baker School in Brookline. Since the age of five, Ari has been passionate about acting and has performed at numerous venues locally, including the ART and the Coolidge Corner. She hopes you enjoy the show!

**Jerald Rivera (Flower Bud)** is an aspiring actor from Boston's Back Bay. An 8th grader at Josiah Quincy Upper School, Jerald plans to attend Boston Arts Academy for high school.

**Robert L. Rucinski (Musical Director)** is excited to return to WFT, where he was musical director for *Anne of Green Gables* and *The Phantom Tollbooth*. He works as a freelance music director, pianist, and conductor with many theatres and schools throughout NE. Credits with NSMT include *A Christmas Carol*, *Cinderella*, and *Damn Yankees*; he has also worked with Seacoast Rep, Palace, Reagle, Papermill, and BCT. A Jersey City native, Robert now lives in Arlington.

**Grace Schifilliti (Flower Bud)**, a 4th grader at Hillside School in Needham, made her WFT debut last season in *Mountain...Moon* as a monkey. She has taken many classes here and has been coming to WFT since she was three. Grace loves playing basketball, likes climbing and gymnastics, and enjoys sewing and making electronics and other types of projects.

**Jenna Lea Scott (Frog Footman)** returns to WFT after abolishing segregation on *The Conny Collins Show* in last season's *Hairspray* (2014 Elliot Norton Awards for Outstanding Musical and Ensemble). Other WFT credits include *Peter Pan* (Liza), *Seussical* (Mrs. Mayor), and *Anne of Green Gables* (Diana). Jenna teaches Musical Theatre Discovery and Curtain Call at the Brookline Music School. Thanks to Andrew, Wendy, Shelley, Jose Delgado, Doug Jabara, Jane Staab, Susan Kosoff, the Carmichael Family, and Betty and Dad!

**Lisa Simpson (Costume Designer)** has been WFT's costumer since 2006. She has designed costumes for many productions here, including *Hairspray*, *Anne of Green Gables*, *The Phantom Tollbooth*, and *A Tale of Two Cities*. Her first foray into sewing and creating costumes was at age six, when she removed and cut up her new bedroom curtains, much to her mother's dismay.

**Jennifer Elizabeth Smith (Sister/Grackle)** is thrilled to be making her WFT debut! Recent credits include *Adam Lives* (Goodspeed), *The Apple Tree* (Boston Conservatory), and *The Runaway Clone* (Ruckus Rockwell). Jennifer is a recent graduate of the Boston Conservatory, with a BFA in Musical Theatre. A million thanks to Andrew, Shelley, cast and crew, mom and dad, and Caleb Dehne. This is for little sisters Emily and Kelly.

**Julia Talbot (Dinah/Cheshire Cat)**, 14, greatly enjoys the company of puppets. She played Mr. Nilsson in WFT's *Pippi Longstocking*. This is her fifth WFT production. Julia is honored to be onstage alongside such a talented cast in *Wonderland*. When she's not attached to a cat, she is attached to her laptop.

**Abigail Tenenbaum (Flower Bud)** is a 7th grader at NuVu Studio in Cambridge, learning to make robots and design other cool stuff. Previous credits include *Brundibar* (Central Square), *Lizzie Borden* (BLO), and *Aleko* (Commonwealth Lyric). Abi's pastimes include beating her mom at Boggle, flying trapeze, and reading science fiction. She is very excited to be falling down the rabbit hole to *Wonderland* with WFT.

**Noah Virgile (Tweedle Dum)** is currently a senior at Lexington High School, where he is an active participant in both the music and theatre programs. Previous roles include Jason Willette in *Rabbit Hole* (Umbrella) and John Thomas in *Miss Saigon*, Joseph "Old Man" Strong/Hot Blades Harry in *Urinetown*, and Billsticker/Gentleman/Rich in *A Dream Play* (Lexington HS). This is his WFT debut.

**Desiree Weems-Sheppard (Sign Performer)** studied ASL Interpretation and Theatre at UNH. She was last seen interpreting WFT's production of *Hairspray*. Other credits include *Once*, *A Young Person's Guide to the Orchestra*, *Pippi Longstocking*, *Oliver!*, *War Horse*, *Anne of Green Gables*, *The Wizard of Oz* and *The Phantom Tollbooth*. Desiree thanks her family and her friends, and is grateful to Kristin Johnson for giving her the opportunity to be part of such a wonderful experience. Enjoy the show!

**Aubin Wise (White Queen)** is elated to make her debut with WFT. Recent NE credits include Nettie in *The Color Purple* (SpeakEasy), Whitney Houston in *Where We Belong: The Winans Project* (ArtsEmerson), and the Boston Pops with Mario Frangoulis and Conductor Keith Lockhart. West Coast credits include Joanne in *Rent* (Jerica) and Lady in Teal in *For Colored Girls...* (Missouri Street). Aubin is currently studying vocal performance at Berklee College of Music.



# ALICE

Adaptation by Andrew Barbato Music and Lyrics by Andrew Barbato and Lesley DeSantis  
Adapted from Lewis Carroll's *Alice's Adventures in Wonderland* and *Through the Looking Glass*

DIRECTOR  
**Andrew Barbato**

MUSICAL DIRECTOR  
**Robert L. Rucinski**

SET DESIGNER  
**Matthew T. Lazure**

LIGHTING DESIGNER  
**Scott Clyve**

ASSISTANT DIRECTOR  
**Laura Graczyk**

COSTUME DESIGNER  
**Lisa Simpson**

PROPS DESIGNER  
**Marjorie Lusignan**

SOUND DESIGNER  
**Roger J. Moore**

PRODUCTION STAGE MANAGER  
**Susan Lombardi-Verticelli\***

SIGN PERFORMERS  
**Letitia Nadine Bynoe, Desiree Weems-Sheppard**

AUDIO DESCRIBER  
**Cori Couture**

## THE CAST

Mother/Queen of Hearts	<b>Leigh Barrett*</b>
White Rabbit	<b>Stephen Benson*</b>
March Hare	<b>Jane Bernhard</b>
Alice	<b>Maritza Bostic</b>
Tweedle Dee	<b>Dashiell Evett</b>
Mouse	<b>William Gardiner*</b>
Mad Hatter	<b>Russell Garrett*</b>
Caterpillar	<b>Elbert Joseph</b>
Duchess	<b>Robin Long*</b>
Cook	<b>Alexandra Nader*</b>
Dormouse	<b>Merle Perkins*</b>
Frog Footman	<b>Jenna Lea Scott*</b>
Sister/Grackle	<b>Jennifer Elizabeth Smith</b>
Dinah/Cheshire Cat	<b>Julia Talbot</b>
Tweedle Dum	<b>Noah Virgile</b>
White Queen	<b>Aubin Wise</b>

## FLOWER BUDS

Violet de Besche, Alba Clarke, Emma Kahn, Juliann F. Khirallah, Anna Kraffmiller, Neel Anand Kumar, Owen Lonergan, Zoë Leah Parkin, Arianna Reith, Jerald Rivera, Grace Schifilliti, Abigail Tenenbaum

There will be one 15-minute intermission between the acts.

ALICE is presented through special arrangement with Andrew Barbato and Lesley DeSantis.

Ask the House Manager for individual sound enhancement devices.

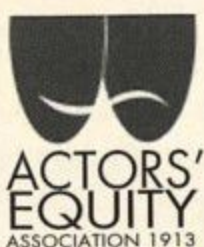
The taking of photographs and use of recording devices is strictly forbidden.

**Please turn off all electronic devices. Please, no eating or drinking in the theatre.**

Open captioning provided in collaboration with c2 (caption coalition) inc, [www.c2net.org](http://www.c2net.org).



This program is supported in part by a grant from the Boston Cultural Council, a local agency which is funded by the Massachusetts Cultural Council and administered by the Mayor's Office of Arts and Culture.



\*Member of Actors' Equity Association, the Union of Professional Actors and Stage Managers in the United States. The Wheelock Family Theatre is operating under the terms of a Developing Theatre's Program of Actors' Equity Association. The contract used is a Letter of Agreement.



[massculturalcouncil.org](http://massculturalcouncil.org)



## MUSICAL PROGRAM

### ACT ONE

Another Person's Life.....	Alice
Good Morning.....	Mother, Alice
Don't Embarrass Me, Alice.....	Mother, Alice, Sister, White Queen
Not My Birthday.....	Alice, Tweedle Dum, Tweedle Dee
The Fall.....	Alice, Company
Golden Key / Loveliest Garden.....	Alice, Company
One Tiny Taste.....	March Hare, Mad Hatter
Please Stop Crying.....	Company
Who I Was.....	March Hare, Mouse, Sister
Sea As Our Guide.....	Mouse, Alice
Captain Taught Her.....	White Queen, Alice
Little Girls / Twilight.....	Mother, Mouse, Alice, White Queen, March Hare
Alice's Lament.....	Alice
Alice, Be Careful.....	Company
Loneliness Calls.....	Frog Footman, Alice
Mother On The Edge.....	Duchess, Cook
Another Person's Life (Reprise).....	White Queen, Alice

### ACT TWO

Tea Party.....	Mad Hatter, Dormouse, March Hare, Alice
Win Or Lose.....	Tweedle Dum, Tweedle Dee, Alice, Sister
She Knew She Was Close.....	Tweedle Dum, Tweedle Dee
Welcome.....	Queen of Hearts, Company
Into The Garden.....	Grackle, Tweedle Dum, Tweedle Dee
Paint The Roses Red.....	Queen of Hearts, Alice
Blue-Eyed Girl.....	White Queen, Mother, Sister, Alice
Little Girls.....	Company
I'll Grow Up.....	Alice, White Queen, Mouse
Sailing Home / Good Night.....	White Queen, Sister, Mother

### ORCHESTRA

Piano/Conductor – Robert L. Rucinski    Violin/Viola – Chris LeDoux  
 French Horn – Meredith Gangler    Drums/Percussion – Peter Broggi

Wheelock Family Theatre is a member of the American Alliance for Theatre and Education (AATE); ArtsBoston; Cultural Access New England (CANE); MASSCreative; StageSource, the Alliance of Theatre Artists and Producers; and the Theatre Artists' Marketing Alliance (TAMA).



# Wheelock Family Theatre

## STAFF

Producer/Co-Artistic Director	<b>Wendy Lement</b>
General Manager/Co-Artistic Director/ASM	<b>Shelley Bolman*</b>
Director of Education	<b>John Bay</b>
Assoc. Director of Education/Managing Director, Theatre Espresso	<b>Kortney Adams</b>
Publicity and Marketing Director	<b>Charles G. Baldwin</b>
Administrative Director	<b>Kay Arden Elliott</b>
Development Consultant	<b>Janet Bailey</b>
Grantswriter	<b>Diane Oktay</b>
Audience Engagement Coordinator	<b>Marianne Adams</b>
Inclusion Coordinator/Director of Artistic Sign Language	<b>Kristin Johnson</b>
Box Office Manager/Assoc. Director, Emerging Playwrights Program	<b>Stephen Reinstein</b>
Technical Director	<b>Matthew T. Lazure</b>
Associate Technical Director/Sound Op	<b>James Williston</b>
Assistant Technical Director/Master Electrician	<b>Craig A. Zemsky</b>
Crafts Director/Props Mistress	<b>Marjorie Lusignan</b>

## PRODUCTION TEAM

Assistant Stage Manager	<b>Laura Morgan</b>
Assistant to the Set Designer	<b>Arthur Wheelock-Wood</b>
Movement Coach	<b>Laura Graczyk</b>
Puppetry Coach	<b>Roxanna Myhrum</b>
Costumer	<b>Lisa Simpson</b>
Costume Shop Staff	<b>Mina Ha, Jennie Hudson-Bryant, Sarah Kershaw Alessandra Mondolfi, Pier Talbot</b>
Make-up Artist	<b>Alycia Sacco</b>
Captioning	<b>Jamie Aznive, Kayloni Williams, coordinators Sheelagh Cook, Rachel Dunbar, Evan Kersey, Elisabeth King, Madelyn Kingan, Darius Morant, Catherine Rancourt, Valerie See, Kaitlyn Talbot</b>
Scenic Carpenters	<b>Doughty Leigh, Jerry Wheelock</b>
Electricians	<b>Doughty Leigh, Ben Murray, Eliot Purcel, Dylan Seo</b>

## EDUCATION PROGRAM FACULTY

Marianne Adams, Katherine Akerley, Esme Allen, Christy Betit, Danny Bolton, Jennifer Buller, Cori Couture, Laura DeGiacomo, Andrea Doane, Kelly Dooley, Donna Folan, Ellie Friedland, Jeri Hammond, Kristin Johnson, Shannon Lee Jones, Steven Lipsitt, Marjorie Lusignan, Dev Luthra, Angie Jepson Marks, Brett Marks, Roxanna Myhrum, Grace Napier, John O'Neil, Becca Opstad, Beth Peters, Stephen Reinstein, Sophie Rich, Samantha Richert, Ilyse Robbins, M. Lynda Robinson, Rebecca Schneebaum, Brynnalee Simmons, Jackie Theoharis, Rita Thompson, Kaitee Tredway, Fran Weinberg, Alan White

## CREWS, WORK/STUDY STUDENTS, AND INTERNS

Natasha Alisandratos, Khilah Boone, Melissa Bratti, Kaleigh Carrington, Sarah Colclough, Rachel Copans, Rachel Costello, Megan Donovan, Genny Dyer, Molly Fallon, Fantasia Fernandes, Courtney Fillebrown, Kira Firenze, Amani George-Luis, Kendra Grant, Alicia Hebert, Cassandra Highbridge, Carina Lawrence, Rachel Leblanc, Dianys Mendez, Katie Merritt, Carrie Moore, Lauren Ofshay, Leslie Perlera, Davis (DJ) Piper, Jessica Romero, Marcus Sardella, Maddie Sicard, Jetta Smith, Marquis Solis, Lennie Tripolitis, Kianna Vargas, Doris Vincent

## SPECIAL THANKS

Shawn P. Cotter; Sydney Crook; Sanjeev Joshi; James Karg; Andrew Katz; Jeffrey Linde; Kimberly Lusignan; Mr. John's Cleaners; Laura Parkin; Mary ElizaBeth Peters and The Accessible Theatre; Helen F. Ray; Thecla Ree for the study guide; Frank Romero and members of the Wheelock College Facilities staff; Nancy Viall Shoemaker; Patrick Snyder; Jacob Stacy; Jerry Wheelock; Ezra and Jodi Leduc Zemsky

*We wish to thank all the people who have joined with us since the program went to press.*



# TENACRE ) SCHOOL

## *Open Houses*

Nov. 9, 1:00–3:00 p.m.

Nov. 11, 8:15–10:15 a.m.

## *Tuesday Tours*

8:15–9:15 a.m.

Nov. 18–Jan. 27

*Come visit us and see  
what makes Tenacre  
an exceptional  
elementary school!*

www.tenacrecds.org • 78 Benvenue Street, Wellesley • 781.235.2282

## baystateparent

A PROUD SUPPORTER  
OF THE ARTS

AVAILABLE AT OVER 1800  
LOCATIONS ACROSS  
MASSACHUSETTS  
& ONLINE

2 EDITIONS SERVING  
CENTRAL/EASTERN  
& WESTERN MA

508-865-7070

SHAWNA  
SHENETTE  
PHOTOGRAPHY



baystateparent.com



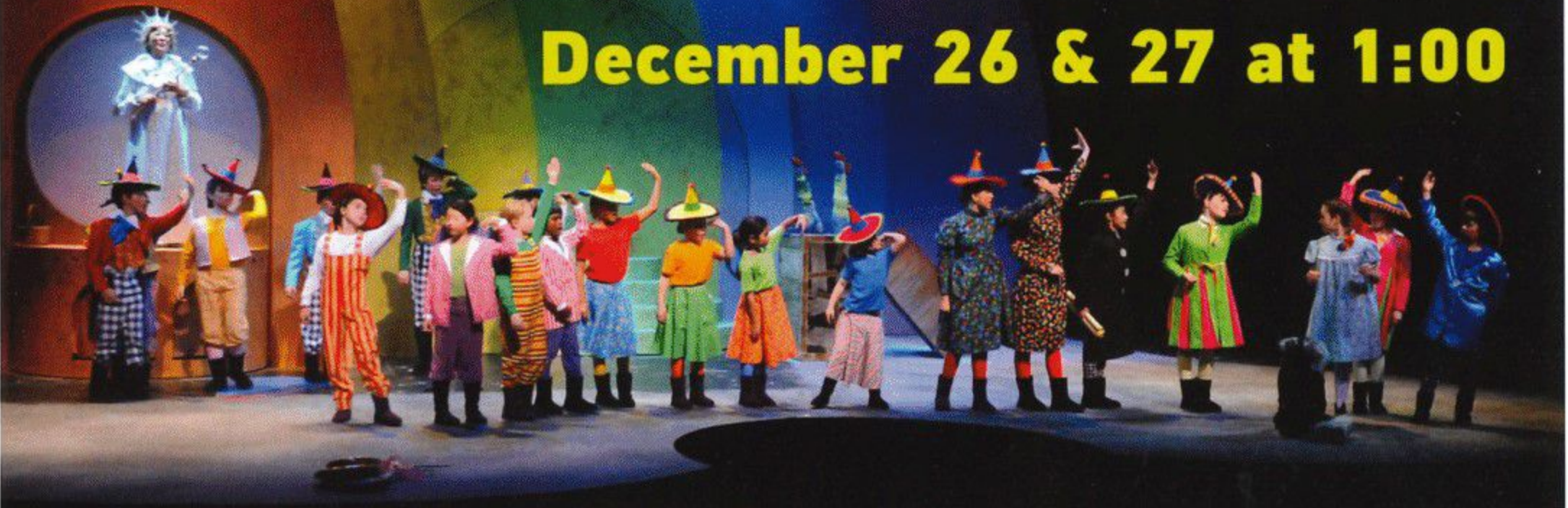


**WHEELOCK  
FAMILY  
THEATRE**

# FUNdraiser

"Come out, come out, wherever you are..."

**December 26 & 27 at 1:00**



**The classic MGM film on the big screen at WFT**

**617.879.2300 • [www.WheelockFamilyTheatre.org](http://www.WheelockFamilyTheatre.org)**

We invite the whole family to join us in song and games and a movie at this WFT end-of-year FUNdraiser!

**Distinctly Different**  
International. Individual. Inspirational.



**BRITISH INTERNATIONAL  
SCHOOL OF BOSTON**

A NORD ANGLIA EDUCATION SCHOOL



Academically rigorous and internationally focused, preparing students for the global future.

Featuring the International  
Baccalaureate Diploma Programme

Serving toddlers through high school students.

**Join us at an Open House:**

Sunday, November 9

1-3 p.m.

Wednesday, December 3

9-11:30 a.m.

Wednesday, January 28

9-11:30 a.m.

617.522.2261

[admissionsbsb@wclschools.org](mailto:admissionsbsb@wclschools.org)

[bisboston.org](http://bisboston.org)



## Wheelock Family Theatre Advisory Board

WFT's Advisory Board is a group of dedicated individuals from broad and diverse segments of the community who provide support and expertise to WFT's staff and artists on an ongoing basis. We are grateful for their insights and their enthusiasm.

**Carola Cadley, Co-Chair**, VP, Corporate Development and Marketing, Children's Hospital Trust, Boston

**Mindy d'Arbeloff, Co-Chair**, VP, New Business Development, fundraise.com, Boston

**Carole Charnow**, President and Chief Executive Officer, Boston Children's Museum

**Eleanor Chin**, Principal, Clarity Partners Coaching and Consulting, Jamaica Plain

**Linda Chin**, President, Asian Task Force Against Domestic Violence, Boston

**Jeff Coburn, Co-Chair Emeritus**, Managing Director, Coburn Consulting, Boston

**Ceronne B. Daly**, Director of Diversity Programs, Office of Human Resources, Boston Public Schools

**Lauren Doherty**, Parent Volunteer, Dover

**Rosario A. Dominguez**, Senior Training and Technical Assistance Associate, Head Start National Center on Program Management and Fiscal Operations, Education Development Center, Inc., Waltham

**Priscilla Fales**, Teacher, Beacon Hill Nursery School, Boston

**Andrea (Andi) Genser**, Executive Director, WE CAN Corporation, Harwich Port

**Nancy Gertner**, Professor of Practice, Harvard Law School, Cambridge

**Lillian Gonzalez**, Principal, Gonzalez & Associates P.C., Stoughton

**Charles (Chuck) B. Gordon**, President, The New Kensington Group, North Reading

**Eric Hermanson**, Attorney, White & Williams LLP, Boston

**Steven M. Key, Esq.**, Attorney, Law Office of Steven M. Key, Boston

**Susan Kosoff**, Co-Founder, Wheelock Family Theatre

**Robin Mount, Co-Chair Emerita**, Director of Career, Research, and International Opportunities, Office of Career Services, Harvard University, Cambridge

**Sharon Rich**, Financial Planner, WOMONEY, Belmont

**Paul Rivenberg**, Communications and Educational Outreach Coordinator, MIT Plasma Science and Fusion Center, Cambridge

**Brooke Sandford**, Parent Volunteer, Sudbury

**Alane Shanks**, President and Founder, The ARC Group, Brookline

**Meegan Turet**, Fine Arts Chair, Academy of the Pacific Rim Charter Public School, Hyde Park

### Wheelock Family Theatre extends deep appreciation to the following members of the Wheelock College community for their support:

President Jackie Jenkins-Scott; Stephen Dill, Marketing Manager; Michael Fesko, Director of Campus Services; Joan V. Gallos, VP for Academic Affairs; Marjorie Hall, Chair of Arts; Adrian K. Haugabrook, VP for Student Success and Engagement; Ed Jacques, Director of Facilities; Anne Marie Martorana, VP and Chief Financial Officer; Jennifer Rice, VP for Development and Alumni Affairs; Marta T. Rosa, Executive Director, Department of Government & External Affairs, and Community Impact; and Roy Schifilliti, VP for Administration, Institutional Effectiveness, and Innovation.

*inspire a world of good* | WHEELOCK  
COLLEGE



## Wheelock Family Theatre Supporters

Since 1981 Wheelock Family Theatre has been bringing professional productions and educational programs to children and families from communities throughout the Boston area. We are committed to keeping the quality of our productions high and our ticket and tuition prices affordable. But ticket income covers only about two-thirds of our costs. For the rest, we rely on the support of those generous institutions and individuals who value our work and understand the contribution we make to the community. To make a tax-deductible contribution to Wheelock Family Theatre, please contact Kay Arden Elliott at 617.879.2252 or visit [www.wheelockfamilytheatre.org](http://www.wheelockfamilytheatre.org).

### Institutional Supporters

Actors' Equity Foundation  
Bank of America  
Boston Children's Hospital  
Boston Cultural Council  
Boston Parents Paper  
Jane B. Cook Charitable Trust  
Massachusetts Cultural Council  
The Parthenon Group  
Peabody Foundation  
Clinton H. and Wilma T. Shattuck Charitable Trust  
Sodexo  
Wheelock College  
Yawkey Foundation

### Individual Donors to the Annual Fund

#### Angels (\$1,000 and up)

Mr. and Mrs. Robert G. Anderson  
Atlantic Philanthropies Director/Employee Designated Gift Fund  
Dr. Liliana Bordeianou and Eric B. Hermanson  
Carola Cadley  
Jeff Coburn  
Sally Reeves Edmonds  
Priscilla Fales  
Barbara Elliott Fargo  
Susan Kosoff  
Wendy Lement  
Carol and Gordon Marshall  
The Mussafer Family  
Greg Nash  
Suzanne R. Newton  
Brooke and Neal Sandford  
Ellen H. Skove and Families  
Stephanie Spector

#### Leading Players (\$500-\$999)

Charles G. Baldwin  
Sarah and Richard deLima  
Kay Arden Elliott  
Susan Gochenour and Steven Rosen  
Jennifer Morrison and Richard Marks  
Antonia and Joe Nedder  
John Reinstein and Nancy Gertner  
Lori and Jon Shaer  
Jane Staab  
Sally and Richard Zeckhauser

#### Supporting Players (\$100-\$499)

Anonymous (2)  
Joshua Abrams  
Ashley Ackerman  
Amy Almeida  
The Ashline/Gates Family  
Janet Bailey  
Maria Barry  
Angela and Christopher Bauer  
John Bay  
Margaret Bergstrand  
Mindy Berman and Family  
Alan and Debbie Bieri  
Gay Bird  
Shelley Bolman  
Danny Bolton  
Debra Borkovitz  
Amy Branger and Andrew Klein  
Monique and Greg Brown  
The Carsons  
Chamber Theatre Productions  
Katherine Chapman and Thomas Stenberg  
Carole Charnow  
Susan Chrystal  
Michele Clark and Ziyad Hopkins  
Ellen Colton  
Cheryl and David Cotney  
Chris and Zu Cowperthwaite  
Bob Crabtree and Prill Ellis  
Tina and Harvey Crosby

This list reflects gifts received between 7/1/13 and 6/30/14.

Amanda Cunningham  
The Curtin Family  
John Davin  
Martha Davis  
Dean K. Denniston, Jr.  
Andrea E. Doane  
Bob Doane  
Zelinda and John Douhan  
Mary Lee and Buzz Dunn  
Natalie Eldridge and Libba Ingram  
Elizabeth Ferry  
Marcia McClintock Folsom  
Bobbi Fox  
Emily Friedman  
Meryl Galaid  
Rosie and Ignacio Garcia  
Andrea Genser  
Leslie E. and Charles B. Gordon  
Mary Beth and Chris Gordon  
Shelly Greenfield and Allan Brandt  
Donna Griffith  
Rena Gyftopoulos  
Susan Harris-Sharples  
Frank Hertz  
Anne and Jim Howard  
Chobee Hoy  
Mary C. Huntington  
Hannah Intille  
Debby Keefe  
Sally Kindleberger  
Margaret Ke Kiwanuka-Woernle  
Deborah Knowlton  
Stephen Kraffmiller  
Stacey and David Lee  
Sara Levine  
Nicky and Paige L'Hommedieu  
Ulla C. Malkus  
The Manasse-Latham Family  
Mary and Mike McConnell  
Carol and David Mersky  
Mark Minton  
Laura Morrison and Richard Pels  
Grace Napier and William Monnen  
The Norton Sheehans  
Lisa Johnson Ogrinc  
Laura Parkin  
Elaine Paster  
Charlotte and Ed Peed  
Mary ElizaBeth Peters  
Adelaide M. Queeney  
Andrea Rosenthal  
Susan Ryan  
David Salant  
Lisa and Roy Schifilliti  
Betty and Herman Scott  
Maggie Seelig  
Ruthann Sneider  
Judy Spiridigliozzi  
Mr. and Mrs. George R. Sprague  
Bonnie St. Germain  
Janet and Dr. O. Robert Stevens  
Martha E. Stone  
Dorothy Stoneman  
Karen and Hale Sturges  
Dan Sullivan  
Debra Raisner Thompson  
Joan I. Thorndike  
Thu-Hang Tran and Mark S. Day  
Elise and Woody Tucker  
Joan Watts  
Susan Weir  
Jack Welch  
Penelope Wells  
Jerry Wheelock and Elizabeth Wood  
Claire White  
Donna White  
Martha and Jeff Winokur  
Marshall Wolf

### 2014 WHEEL Award Sponsors and Supporters

#### Pearl Sponsors (\$5,000)

Bank of America  
The Parthenon Group

#### Jade Sponsors (\$2,500)

Dr. Liliana Bordeianou and Eric Hermanson  
The Brakeman Family  
Jeff Coburn  
Gonzalez & Associates, PC  
The Mussafer Family  
The Workman Family

#### Copper Sponsors (\$1,000)

Gary Bergstrom  
Carola Cadley  
Priscilla Fales  
Brooke and Neal Sandford

#### Dragon Sponsors (\$500-\$999)

Sue Costello and Jeff Keffer  
Ellie Friedland  
Andrea Genser and Sue Landers  
Charlotte Hemr  
Susan Kosoff  
Tricia Norton  
Residence Inn Marriott Boston Back Back/Fenway  
Susan Wong

#### Individual Supporters

Charlie Allen  
Steve Aveson  
Linda Cabot Black  
Miriam Braude  
Susan Breed  
Jennifer Canlas  
Leann Canty  
Darcy Carr  
Carole Charnow  
Tien-Lih Chen  
Hilary and Ed Cipullo  
Susan Daley  
John Davin  
Mary DelMonico  
David DeSteno  
Andrea Doane  
Lauren Doherty  
Natalie Eldridge and Libba Ingram  
Elizabeth Ferry  
Louise Friedman  
Satoko Hesp  
Meenakshi Kumar  
Mimi LaCamera  
Wendy Lement  
Heather Long  
Rosamond Lu-Bao  
Meredith MacNeill  
Anne Marie Martorana  
Ranida McKneally  
Robin Mount  
Alyson Muzila  
Greg Nash  
Antonia and Joe Nedder  
Pat O'Brian  
Laura Parkin  
Ed Pazzanese  
Adelaide Queeney  
Joe Ranft  
Sharon Rich  
Marta Rosa  
Sam Silberman  
Clyde Smith  
Janet and Dr. O. Robert Stevens  
Hope Haslam Straughan  
Karen and Hale Sturges  
Jennifer Sullivan  
Leslie Sullivan  
Nancy Tang  
Carolyn Thall  
Jerry Wheelock and Elizabeth Wood  
Lee Whitfield  
Karen Worth



# Boston Parents PAPER

Wishing Wheelock Family Theater another successful year!  
Pick up a Boston Parents Paper monthly or visit us online at  
[www.bostonparentspaper.com](http://www.bostonparentspaper.com)



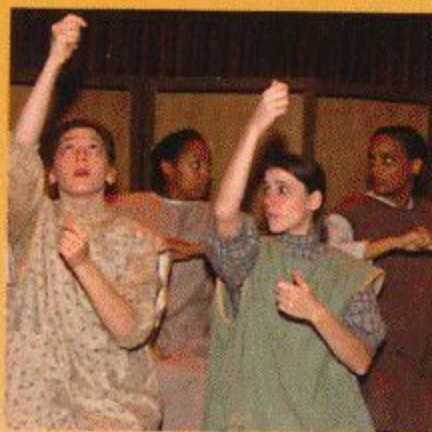
"Like" us on Facebook – [facebook.com/bostonparentspaper](https://facebook.com/bostonparentspaper)  
Follow us on Twitter – [twitter.com/bostonparents](https://twitter.com/bostonparents)



## TheatreEspresso

WAKE UP TO HISTORY!

In Residence at Wheelock Family Theatre!



Our historical dramas empower students to explore the parallels between historical events and contemporary issues. We invite them to question the characters and debate issues raised by our plays. We tour the following plays to schools, museums, and courthouses:

- *Uprising on King Street: The Boston Massacre*
- *The Trial of Anthony Burns*
- *American Tapestry: Bread and Roses Strike*
- *Justice at War: Japanese Internment Camps*
- *The Nine Who Dared: Crisis at Little Rock*
- *Secret Soldiers: Women Who Fought in the Civil War*

To bring one of our programs to your school or to learn more, contact Kortney Adams at 617.879.2148 or [kadams@wheelock.edu](mailto:kadams@wheelock.edu), or visit our website at [www.TheatreEspresso.org](http://www.TheatreEspresso.org)



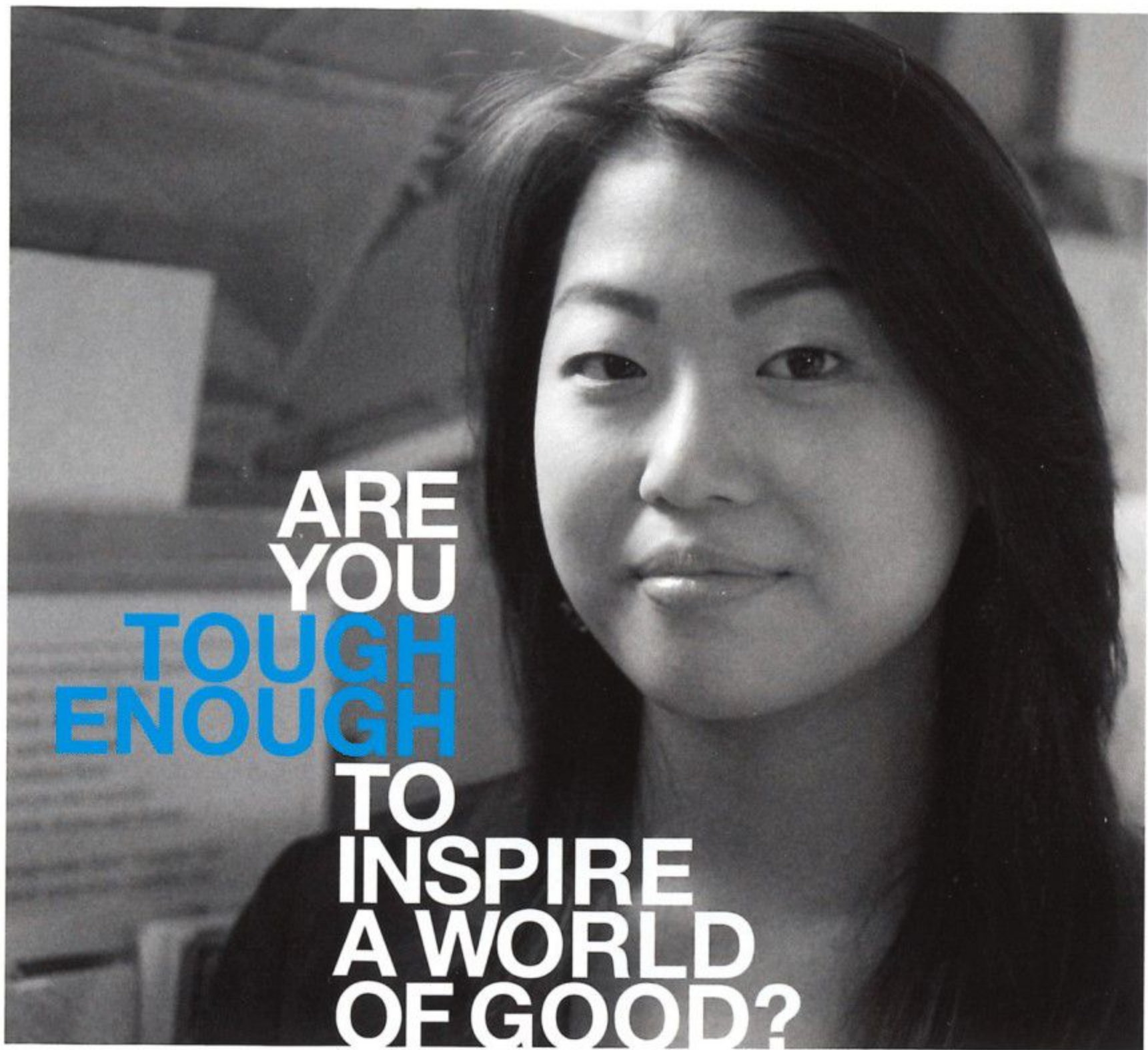
**White and Williams** LLP

White and Williams LLP is excited to support the Wheelock Family Theatre's 2014-15 season.

99 Summer Street, Suite 1530  
Boston, MA 02110-1248  
617.748.5200

Delaware | Massachusetts | New Jersey | New York | Pennsylvania  
[whiteandwilliams.com](http://whiteandwilliams.com)





In a world of injustice, nothing ever changes—until someone is tough enough to change the existing order. At Wheelock, our mission is to improve the lives of children and families. Everything we do, from academic programs to community service and partnerships to advocacy has our mission at its core. It's not easy. Just worth it. Are you tough enough to inspire a world of good?

Learn more at [wheelock.edu/toughenough](http://wheelock.edu/toughenough)

---

Inspire a world of good | WHEELOCK  
COLLEGE