



WHEELLOCK
FAMILY
THEATRE

Mary Poppins



January 29–February 28, 2016

  February 26 & 28

Art © Julia Talbot



Whether for a simple treatment or a complex procedure, you want the best care for your child. You want Boston Children's Hospital Community of Care. Our Community of Care includes satellite locations, affiliated hospitals and over 400 pediatricians across the state. To learn more, visit bostonchildrens.org/until



Boston Children's Hospital

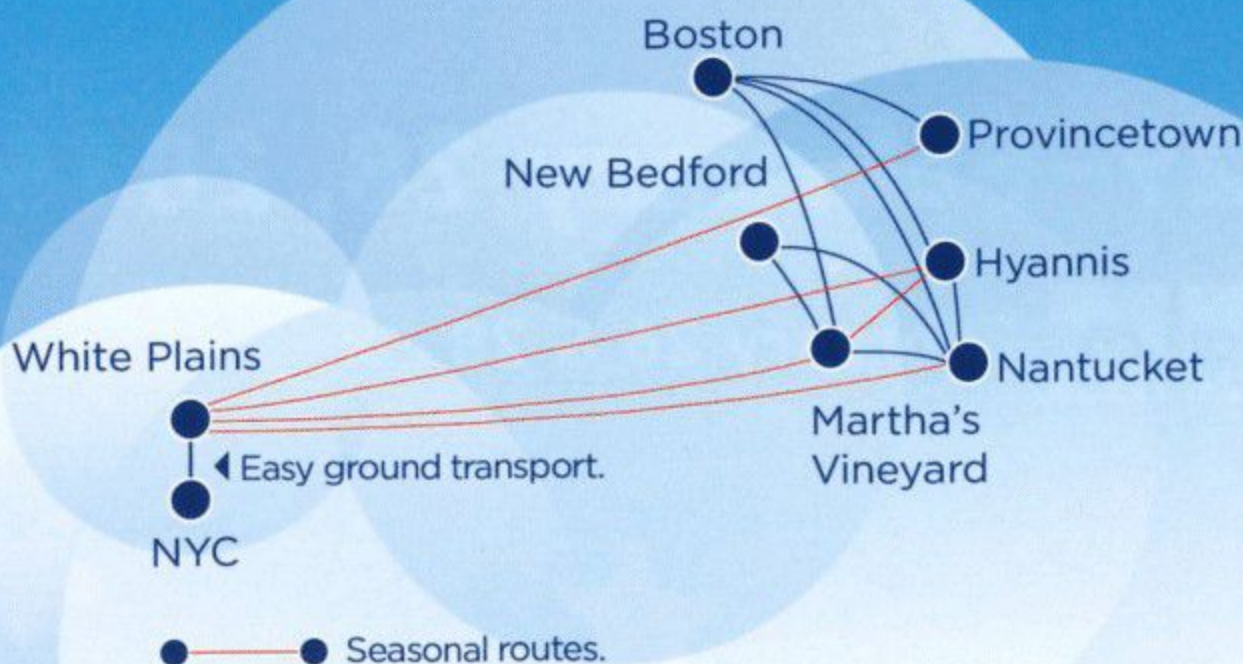
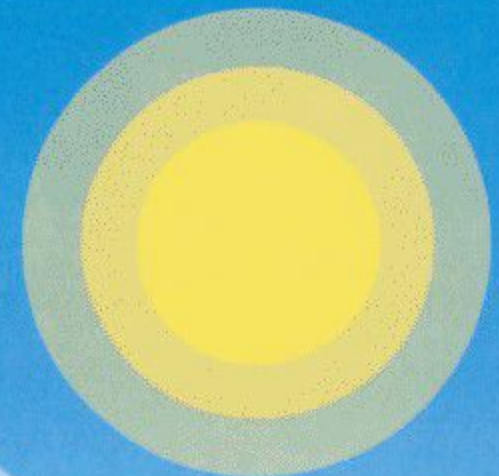
Until every child is well™

BEVERLY | BOSTON | BROCKTON | LEXINGTON | MANCHESTER, NH | METHUEN
 NORWOOD | PEABODY | WALTHAM | WEYMOUTH | WINCHESTER

Traffic? What traffic?



We take the headache out of getting to the Cape with fast flights and easy connections through Boston and White Plains. Day trips to the Islands are a breeze too. Sit back and enjoy the ride.



Cape Air®

capeair.com 800-CAPE-AIR

January/February 2016

Live theatre transforms lives. Through hundreds of productions and educational programs in the last 34 years, Wheelock Family Theatre has provided hundreds of thousands of people of all ages, races, cultures, and physical abilities with magical, transformational theatre experiences.

We are thrilled to continue WFT's 35th season with our production of *Mary Poppins*. We will transport you to Cherry Tree Lane in London, England, in the year 1910. You will get to know and (perhaps not for the first time) fall in love with Bert and the Chimney Sweeps, the Banks family, Londoners from different walks of life, and practically perfect—as well as not-so-perfect—nannies. You may learn how to spell supercalifragilisticexpialidocious (or even how to say it backwards)!

We hope you find watching the show as exciting as our fabulous artistic team and talented cast have found creating it. Our production of *Mary Poppins* involves a great deal of collaboration on-stage and off-stage. You will see our ensemble step in time in perfect rhythm, everyone doing his or her part in the production numbers. You will see how the actors; the set, lighting, costume, and props designers; the musicians; and the choreographers work together to support the director's vision and tell the story. You will see LED screens on the sides of the stage with the show's lines, lyrics, and sounds all expertly coordinated by the Open Captioning team. You will see tricks that you may or may not be able to figure out, but believe us when we say that it takes technical talent, timing, and teamwork to make them happen.

We hope you leave the theatre with a smile on your face, warmth in your heart, and new ideas to think and talk about—perhaps a little transformed by the experience. And of course we hope you will return, again and again, to recapture the magic.

Sincerely yours,

Linda Chin, *Executive Director*

and the staff of WFT: Kortney Adams, Jamie Aznive, Shelley Bolman, Kay Arden Elliott, Matthew T. Lazure, Marjorie Lusignan, James Williston, Lloyd Woodcock, Craig A. Zemsky



Mail: 200 Riverway, Boston, MA 02215-4176

Tickets and Subscriptions	617.879.2300	tickets@wheelock.edu
Classes	617.879.1175	lwoodcock@wheelock.edu
Casting	617.879.2235	sbolman@wheelock.edu
Donations	617.879.2252	kelliott@wheelock.edu
Theatre Espresso	617.879.2148	kadams@wheelock.edu

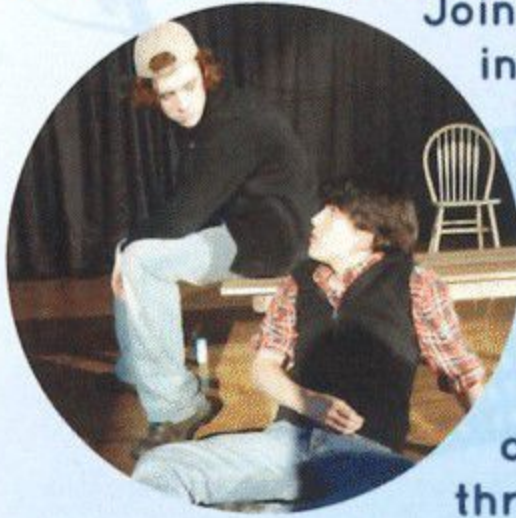
Web: www.wheelockfamilytheatre.org



MERIDIAN ACADEMY

CURIOSITY CREATIVITY COMMUNITY

INTELLECTUALLY ACTIVE LEARNING



Join a project-based, intentionally small, interdisciplinary school for students in grades 6 through 12. Creative investigations and expression are integrated throughout the curriculum.

LEARN MORE AT:

www.meridianacademy.org

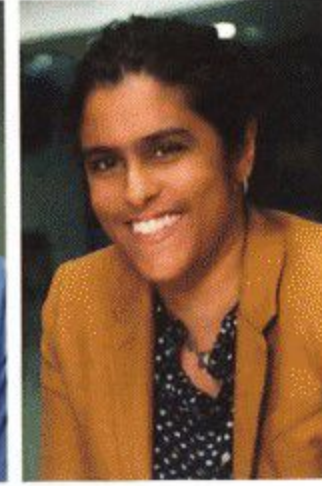
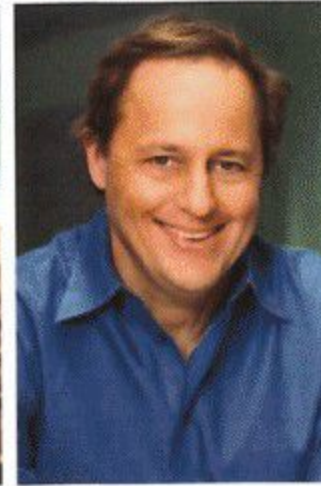
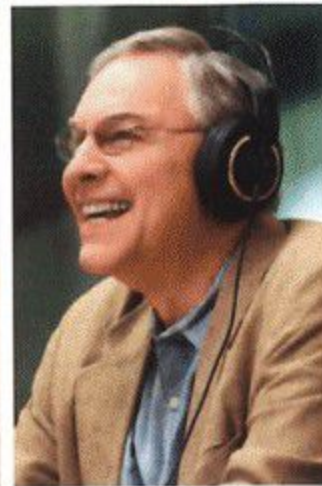
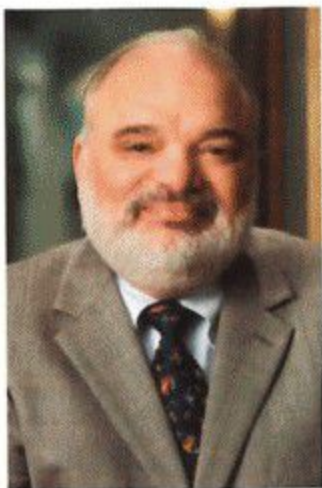
SMALL CLASSES - CARING COMMUNITY



Meridian students do original history research and then create sculptures to convey the ideas that they have discussed; carry out original marine science explorations in the harbor; perform community service in Spanish; and take field trips to the ART, MFA, and other cultural institutions for plays and exhibits connected to their learning. Studio and performing arts and music are integrated across the curriculum.

54 Brookside Ave. Jamaica Plain, MA 02130 617. 227. 1118

We entertain ideas and conversation.

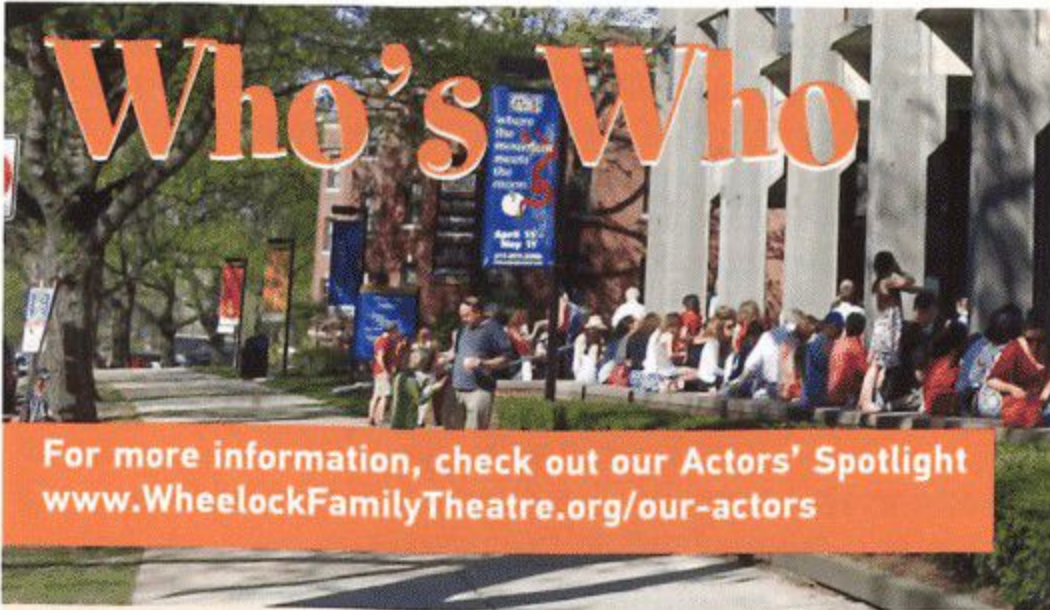


**W
B
U
R**

Left to right, top to bottom:
Bob Oakes
Tom Ashbrook
Jeremy Hobson
Robin Young
Lisa Mullins
Bill Littlefield
Anthony Brooks
Meghna Chakrabarti
www.wbur.org

On-air, online and at live events, WBUR is your source for what's happening in Boston and around the world.

90.9 wbur
BOSTON'S NPR® NEWS STATION



Rachel Abbate (Ensemble) is thrilled to be making her WFT debut! She was most recently seen in *42nd Street* and *Guys and Dolls* (Ocean State). Other regional credits include *Camelot* (New Rep); *Oklahoma!* (Berkshire); *Thoroughly Modern Millie* (Stoneham); and *The Mikado* and *The Music Man* (Muhlenberg). Thanks to all who have supported her over the years!

Nicky Carbone (Production Stage Manager) is very happy to be on the WFT team in its 35th season. Nicky has spent the last six years as the technical designer for the Canton Elementary Schools and the past two years as the technical director and stage manager for the Canton Public School system, helping introduce children and teens to the theatrical arts. Favorite stage management credits include *The Mystery of Irma Vep* and *She Loves Me* (MMAS); *Eurydice* and *Our Town* (ACT); *August: Osage County* (CCT); and *The Trumpet of the Swan* (ASM, WFT). Thanks to Mom, Dad, and C for all their love and support. Always.

Will Christmann (Ensemble) is ecstatic to be in his sixth WFT production! A junior at Arlington High School, he is in his fourth year of training with the Cambridge Youth Dance Program (CYDP) under the direction of Deborah Mason. Big thanks to his family, the cast and crew of *Mary Poppins*, and all his teachers at CYDP!

Katie Anne Clark ((Katie Nanna, Dance Captain, Ensemble) is making her WFT debut! Her credits include *Creative License* (NYCFringe) and the national tour of *The Music Man*. Regional credits are *Big Fish* (SpeakEasy), *Camelot* (New Rep), *Wonderful Town* (Reagle), and *Guys and Dolls* and *The Addams Family* (Ocean State). Upcoming for Katie: Queenie in *The Wild Party* with Moonbox. Proud member of Actor's Equity. Huge thanks to Russell and the entire cast and crew! 143

Cori Couture (Audio Describer) has described content for WGBH's Descriptive Video Service, WFT, the Huntington, Open Door Theater, and Liars and Believers. She teaches for WFT and creates "Social Stories" to help patrons on the autism spectrum prepare for coming to the theatre. Also, as the Theatre's Education Support Specialist, she provides individualized attention to WFT students and parents, and supports WFT faculty.

Laura D. DeGiacomo (Winifred Banks) has been seen in the national tours of *Grease* (Sandy and Patty u/s) and *Showboat* (Kim) and the European tour of Ken Hill's *Phantom of the Opera* (Jammes). Boston area credits include: *A Christmas Carol* (Hanover); *Sisters of Swing*, *The Good War*, and *The Who's Tommy* (Stoneham); *Marty* (Huntington); *Better Off Dead* (Village Theater Project, BCA); and *The Will Rogers Follies* (WFT). Regional credits include *Fiddler on the Roof* (Artpark), *Anything Goes!*, and *Babes in Toyland* (Shawnee). A WFT teaching-artist, she has also choreographed for Stonehill College, the Freelance Players, and Littleton High School. She holds a BFA in Musical Theatre from Emerson. Laura sends a special thanks to her real life "Banks family" for all of their love and support—her husband, Michael; daughter, Isabella; and Mom, Joanne.

Steven Del Col (Herr Von Hussler, Ensemble, u/s Bert) is making his WFT debut! Regional credits include Tony Williams' *Urban Nutcracker* (Nut Head); *Grease* (Ensemble), Paper Mill Playhouse; *Mary Poppins* (Northbrook/Ensemble), New Bedford Festival; and

A Chorus Line (Mike), FUSE. Steven is currently pursuing a BFA in Musical Theatre at the Boston Conservatory, where he has performed in *Chicago*, *On the Town*, *Hai*, and *Oklahoma!* Huge thanks to Russell, and friends and family for their continued support!

Shana Dirik (Miss Andrew, Miss Lark) is excited to be making her WFT debut. She can be seen next as Dolores in Moonbox's *The Wild Party*. Shana's credits include Ursula (*Little Mermaid*); Witch (*Into the Woods*, 2015 NHTA nom); Maria (*Tenor*); Jeanette (*Full Monty*); Princess (*Minchen*, IRNE nom); Debra (*Kimberly Akimbo*); Melpomene (*Xanadu*, IRNE nom); Mama (*Chicago*); Rona (*Spelling Bee*); Norma (*Sunset Blvd*); Mother Superior (*Nunsense*); Charlotte (*Night Music*, IRNE); Mrs. Lovett (*Sweeney Todd*, IRNE); Anna (*King and I*); Kate (*Kiss Me, Kate*); Sally (*Cabaret*); and Eva (*Evita*). Thanks to Russell and Shelley for the lovely journey! www.shanadirik.com

Russell Garrett (Director/Choreographer) is so happy to make his directing debut at WFT, after performing here as The Mad Hatter in *Alice* and Archibald in *The Secret Garden*. Most recently he directed and choreographed *The Drowsy Chaperone* in CA, *Forever Plaid* in NH, and *Gypsy* in RI. Other NE credits include *All Shook Up* at NSMT; *Camelot* and *Little Shop of Horrors* at New Rep; *Beehive!* and *Shout* (Ogunquit); and several shows for Ocean State (RI), including *Guys and Dolls*, *Legally Blonde*, *Hairspray*, and *Nine to Five*. Other favorites include *The Who's Tommy*; *Cabaret*; *Kiss Me, Kate*; *Anything Goes*; and multiple productions of *Chicago*. Russell recently made his Off-Broadway directing debut with the musical *The Love Note*.

Bransen Gates (Ensemble), a native of Scottsdale, AZ, is making his WFT debut! Recent credits include *The Threepenny Opera* (Reverend Kimball) at the Boston Conservatory and *Guys and Dolls* (Crapshooter/Ensemble) with Reagle. Other favorite credits include *Hairspray* (IQ), *The Wiz* (Tinman), *Pippin* (title role), *Footloose* (Ren McCormack), and *Spring Awakening* (Ernst/AZ premiere). Proud student of Boston Conservatory. Endless love and thanks to Russell, Rob, Nicky, Shelley, Linda, the cast, his family, Damon, and, of course, Adam.

Andrew Giordano (George Banks) is pleased to be making his WFT debut! He has performed on Broadway, at Carnegie Hall, nationally, internationally, and on TV. Some credits: Edward Rutledge (*1776*), Javert (*Les Misérables*, three different productions), Trevor Graydon (*Thoroughly Modern Millie*, Broadway World Award, Best Actor in a Musical), Bruce Granit (*On the 20th Century*), Adolpho (*The Drowsy Chaperone*), *See What I Wanna See*, *A Chorus Line*, *Into the Woods*, *The Little Mermaid*, *South Pacific*, and *Master Class*. Through his STEP IT UP CLASSES™, Andrew produces musical theatre audition workshops; he also owns musical act TENORS UNDERCOVER™ (tenorsundercover.com). He trained at the Boston Conservatory and Westminster Choir College and is an alumnus of the international program, *Up with People*®. Next: *Sweet Charity* (Vittorio) at Stoneham.

Beth Gotha (Mrs. Brill) is delighted to be working at WFT for the first time. Boston area credits include *My Fair Lady*, *Into the Woods*, *The Importance of Being Earnest*, and *Sunday in the Park with George* (Lyric Stage); *Richard III* (Publick); *My Fair Lady* and *Beauty and the Beast* (Reagle); and *Beauty and the Beast* and *Our Town* (Worcester Foothills). Beth has also performed with Merrimack Rep, Ogunquit, Súgán Theatre Company and NSMT, among others.

Janie E. Howland (Set Designer) is excited to return to WFT having designed *Hairspray* and *The Taste of Sunrise*. Recent productions include *Urban Nutcracker* (Tony Williams Dance), *My Fair Lady* (Lyric), *Casa Valentina* (SpeakEasy), *Assassins* and *Millie* (BCT), *Clybourne Park* (Northeastern), and *The Edge of Peace* (Central Square). Her work has been seen at *CONSENSES* conceived by Sally Taylor. Other venues include ASP, New Rep, Weston Playhouse, NSMT, ART Institute, Boston Conservatory, Company One, Stoneham, Seacoast Rep, Merrimack Rep, NJ Shakespeare Festival, and Huntington Studio 210. Janie is a 3-time Norton Award winner and a 4-time IRNE Award winner. Co-founder, CYCO SCENIC; adjunct faculty member, Emerson and Wellesley; MFA from Brandeis. USA Local 829. janiehowland.com

Shannon Lee Jones (*Mrs. Corry, Miss Smyth*) appeared on Broadway as Angelique in the original production of *La Cage Aux Folles*. Tours include Cassie in *A Chorus Line*; *Hello, Dolly!* with Carol Channing; *Funny Girl* with Juliet Prowse; and *La Cage Aux Folles*. Shannon's regional credits include *Cabaret* (Barrington Stage); *Guys and Dolls* (Long Wharf); and *Gypsy, Anything Goes, Drowsy Chaperone, Hairspray, Mame, and I Do I Do* (Coastal Carolina Arts). Boston credits include: *Working* (Lyric); *Carnival* (Gloucester); *Into the Woods* with Rachel York (Reagle); *Cabaret* and *World Goes Round* (New Rep); *Best Little Whorehouse in Texas* (Foothills); and *A Chorus Line* (NSMT).

Ruth Celia Kahn (*Audio Describer*) is thrilled to be back at WFT! Favorite credits include *Urban Nutcracker* (Ballet Rox), *She Loves Me* (Huntington), and *The Barber of Seville* (BLO). Ruth is also a Board-Certified music therapist who can be found at CareWell Adult Day Wellness Center in Norwell, where she serves as Director of Enrichment and Expressive Therapies.

Lenni Alexandra Kmiec (*Annie, Ensemble*) was last seen in NSMT's *A Christmas Carol*. Other credits include *Me and My Girl* (Reagle), *Much Ado About Nothing* (BTC), *Kiss Me, Kate* (Commonwealth Shakespeare), *Crimes of the Heart* (Gloucester), and *A Chorus Line* (Seacoast Rep). She has performed at Lyric Stage, ART/Oberon, Central Square, and Hanover. A Wagner College graduate, Lenni teaches at the Alexander Children's Theatre School and is a member of AEA. www.LenniKmiec.com

Maria LaRossa (*Frannie, Ensemble*) is thrilled to make her debut at WFT. Regional credits include *...Forum, H2\$, West Side Story, Guys and Dolls, Chicago, and A Chorus Line*. Among her choreography/teaching credits: assistant to Broadway/film choreographer Joey Pizzi, *Sweet Charity* (TAMY Award for Best Choreographer), Lasell, Salem State, Dance Inn, Boston Ballet, and American College Dance Festival. Next: *Sweet Charity* at Stoneham. Thank you to Russell for another wonderful experience! She sends endless love and gratitude to her family.

Cameron Levesque (*Michael Banks*), age nine, is thrilled to be making his debut at WFT! Other regional credits include *The Who's Tommy* (Turtle Lane), *The Wizard of Oz* and *A Little Princess* (Metrowest Family), and *A Christmas Carol* (Hanover). Cameron would like to thank Russell Garrett for this wonderful opportunity. He would also like to thank his family for their love and support and dedicates this performance to his "favorite person in the world," his brother, Chris.

Marjorie Lusignan (*Props Designer*) is glad to return for an eighth season at WFT. After a 25-year career as a technical illustrator, she is now a visual artist who lives, gardens, and makes art in the woods of RI.

Carla Martinez (*Ensemble*) is overjoyed to be back at WFT after appearing as the Wicked Witch in *Shrek the Musical* last spring! NE credits include *My Fair Lady* (Lyric Stage); *Far from Heaven* (SpeakEasy); *Hairspray* (Norton Award, Outstanding Ensemble), *It's a Wonderful Life*, and *Oliver!* (WFT); *The Wiz, The Full Monty, ...Forum*, and *Dreamgirls* (Interlakes). Carla is a performer, teacher, and choreographer residing in Boston and a graduate of Berklee College of Music. Endless thanks to family and friends for continuous love and support. www.carla-martinez.com

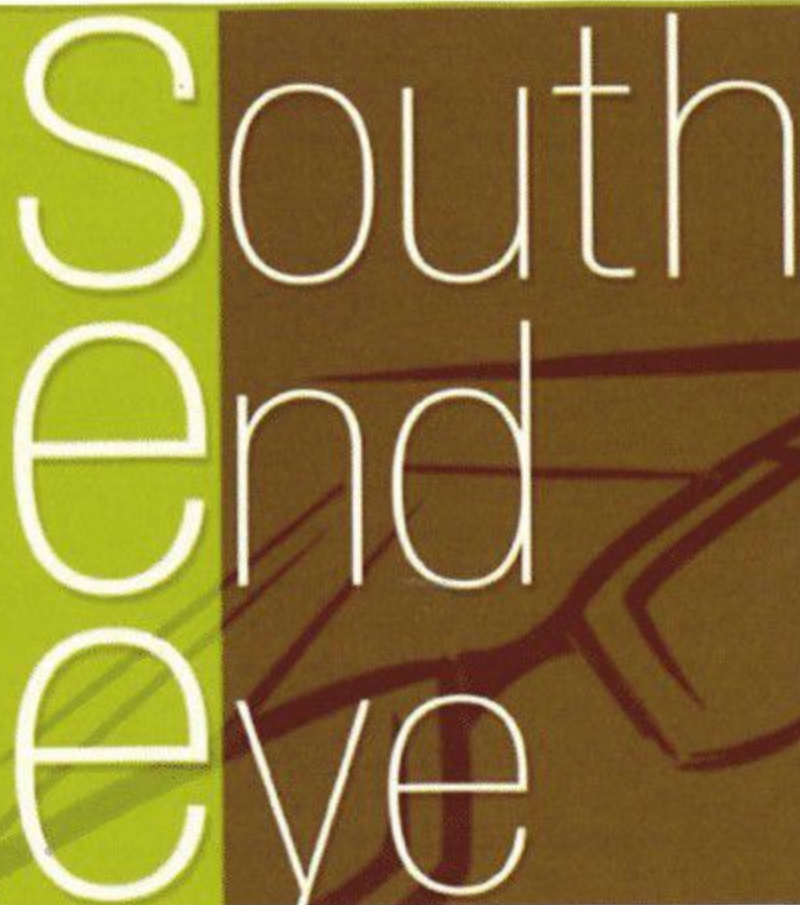
Franklin Meissner, Jr. (*Lighting Designer*) is pleased to return to his favorite Family after designing the lighting for *Oliver!*, *The Wizard of Oz*, *The Phantom Tollbooth*, and *The Secret Garden*. He has designed the lighting for 22 productions at New Rep, including *The Snow Queen, Little Shop of Horrors, The Wild Party* (IRNE nom), *Cabaret, A Christmas Story, Dessa Rose, Sweeney Todd* (IRNE Award), *Into The Woods, Ragtime, and Moby Dick* (IRNE Award). Frank also received an IRNE Award for Lyric Stage's *Sweeney Todd* last season. He recently designed the world premiere of *Albatross* (Norton Award, Outstanding Production) for Poets'. His work has been seen Off- and Off-Off Broadway, at Boston Playwrights' (IRNE Award), Boston Conservatory, SpeakEasy, Stoneham (IRNE nom), Central Square, NSMT, SSMC, Sanders Theatre, various corporate events and colleges around the state, and at 40 Carnegie Hall performances. He is a member of United Scenic Artists. For Abby, who is "practically perfect in every way"! www.FranklinMeissner.com

Roger J. Moore (*Sound Designer*), employed with CBS Radio – Boston for over 25 years, is currently the Assistant Production Director and commercial voice of 98-5 The Sports Hub. He enjoys a variety of freelance video production projects. Since 2004 Roger has worked as sound designer and stage manager for The Gold Dust Orphans. He's been part of the WFT family since 2008.

Asher Navisky (*Michael Banks*) is making his WFT debut and he couldn't be more excited! He has appeared as Daddy Warbucks and Willy Wonka in All Newton Music School productions and is thrilled with the "challenge" of playing someone his own age in *Mary Poppins*. Asher lives in Newton, and enjoys playing piano and guitar, skiing, and making movies.

E. Sho Ndukwe (*Sign Performer*) counts working with WFT as one of her favorite things, and she is super delighted to be back for a sixth time. Credits here include *It's a Wonderful Life, Hairspray, The Taste of Sunrise, Shrek the Musical, and The Trumpet of The Swan*. Sho has also had the privilege of working with BU Theatre, Central Square, Boston Landmarks Orchestra, and Broadway in Boston. Let's get Poppin!

Adrianna Kathryn Neefus (*Sign Performer*) is happy to be back at WFT, where her credits include *Pinocchio, It's a Wonderful Life, and Pippi Longstocking*. She has also interpreted for Central Square (*The Edge of Peace*); BU Theater (*The Cripple of Inishmaan*); Broadway in Boston's *Pippin, Flashdance the Musical, Once, and War Horse*; Boston Landmark Orchestra; BLO; Commonwealth Shakespeare; and Outside the Box. She has a degree in Sign Language Interpreting from UNH Manchester and professional credentials in MA and NH. Thanks to family, friends, and the interpreting team for all their love and support!



South End Eye is a locally owned and operated, independent optical/optometric practice.

We will strengthen the community in which we work and live. We pledge to provide you with exemplary personalized service.

We strive to build enduring relationships.

Comprehensive Eye Exams, Glaucoma and Cataract Screening, Eye Glasses, Contact Lenses, Sunglasses, and Lasik Consult.

681 Tremont Street, Boston, Massachusetts 02118
617-391-0088 • southendeye.com

Gamalia Pharms (*Bird Woman*) is thrilled to be a part of this amazing cast! Last seen at WFT in *Shrek the Musical*, her favorite WFT shows include *Hairspray*, *Beauty and the Beast*, *The Sound of Music*, and *The Good Times Are Killing Me*. Gamalia has performed in regional theatres up and down the East Coast, and has a BFA from Boston Conservatory of Music. Thanks to the WFT staff and crew! A shout out to MassArt! Please don't forget the hungry birds!

Dale Place (*Admiral Boom*, *Bank Chairman*) has appeared in NY in *King Lear* at the NY Shakespeare Festival and in *Nikolai and the Others* at Lincoln Center. At WFT, he was seen in *A Tale of Two Cities* and *Annie*. Locally, he most recently appeared in *A Number* at New Rep. Other area credits include the Huntington (*Our Town*), Lyric, SpeakEasy, Stoneham, Boston Playwrights', and Hanover. Regional: over 30 seasons with Barnstormers, Cleveland Play House, Northern Stage, and Public Theatre of ME. Film: *Joy*, *The Fighter*, *The Proposal*, *Gone Baby Gone*, and *What's Your Number*. Dale will next be seen in the premiere of the Bostonian Museum's *Blood on the Snow* at the Old State House.

Elisabetta Polito (*Costume Designer*) is originally from Montreal, Quebec, Canada, where she studied graphic and visual arts, then costume and theatre design. She has been working professionally in Boston since 2010. Recent work includes *City of Angels* and *Into the Woods* (Lyric); *Big Fish*, *A Future Perfect*, and *Necessary Monsters* (SpeakEasy); *Out of Sterno* (Gloucester); *White Christmas* (Company); *The Bartered Bride* and *The Merry Wives of Windsor* (Boston Midsummer Opera); *...Forum* and *How to Succeed in Business...* (Stoneham); *Medea* (Actors' Shakespeare); *1001* (Company One); *Hamlet* (GAN-e-meed); and *Cyrano* (Apollinaire). Elisabetta is a member of United Scenic Artists, IATSE Local USA 829.

Lily Ramras (*Jane Banks*) is thrilled to return to WFT, previously performing in *Shrek the Musical*. Other credits include *Annie* (title role), Susan Waverly in *White Christmas* and Little Girl in *The Witches of Eastwick* (Ogunquit); Amaryllis in *The Music Man* (MSMT); Belinda Cratchit in *A Christmas Carol* (Hanover); and Jemima in *Chitty Chitty Bang Bang*. Lily also performs with the Friends of Broadway. Special thanks to WFT, RKS, Sarah, Eva, Denise, family, and friends for their tremendous love and support! LilyRamras.com

Dan Reardon (*Bert*), a Wakefield native, is excited to return to this role in his hometown, having played it last spring at Sierra Rep. Regional credits include Bobby C in *Saturday Night Fever* (Arvada), Tulsa in *Gypsy* (OSTC), and Young Scrooge/Christmas Future in *A Christmas Carol* (NSMT). He is grateful to Russell, Shelley, Linda, and everyone at WFT for this opportunity, and to his family and friends for their support. Dan holds a BFA from Syracuse University. For Mom, always.

Robert L. Rucinski (*Musical Director*) is very excited to return to WFT, having previously worked on *Anne of Green Gables*, *The Phantom Tollbooth*, and *Alice*. A freelance music director, pianist, and conductor, he is active with many theatres and school programs throughout NE. Robert's credits with NSMT include: *A Christmas Carol*, *Crazy For You*, *Cinderella*, *Seven Brides for Seven Brothers*, and *Damn Yankees*. He has also worked with Seacoast Rep (Portsmouth, NH), Palace (Manchester, NH), Reagle, Papermill (Lincoln, NH), and BCT. Originally from Jersey City, Robert currently resides in Arlington.

Michael Seltzer (*Park Keeper*, *Ensemble*) is thrilled to be making his WFT debut. He is a junior at Boston Conservatory pursuing a BFA in Musical Theatre. His credits include Sheldon/Lennie (*Junie B. Jones*), Harry the Horse (*Guys and Dolls*), and Max (*The Pajama Game*). Michael would like to thank Russell, Rob, Nicky, Linda, and, of course, his family. Enjoy the show!

Brian Shimasaki-Liebson (*Constable*, *Ensemble*) is very excited to be making his WFT debut! He was most recently seen as Paul in *A Chorus Line* with Arlington Friends of Drama but can also be found in ART's long-running *The Donkey Show*. Brian has also been on the college stages of Wellesley, Babson, and Olin College of

Engineering, where he studies robotic engineering. Huge shout out to everyone at Wheelock for this opportunity, his awesome friends, and his amazing mom.

Pablo Torres (*Robertson Ay*) is thrilled to be making his WFT debut! He was recently seen in *A Little Night Music* as Henrik Egerman (Huntington) and *The Light in the Piazza* as Giuseppe and *Little Murders* as Lt. Practice (Boston Conservatory). His regional theatre credits include *Sweeney Todd* (Toby) and *Bat Boy: The Musical* (Rick) with Tampa Theatre, and *Elegies: For Angels, Punks and Raging Queens* (Patrick) with Edinburgh's Church Hill Theatre. Pablo is pursuing his BFA at Boston Conservatory.

Andrew Winans (*Neleus*, *Mr. Northbrook*, *Ensemble*) was last seen at WFT in *Hairspray* (Norton Award). Regional credits: *Seven Brides...* and *Footloose* (ME State); *Wonderful Town*, *Guys and Dolls*, and *Fiddler on the Roof* (Reagle); *West Side Story* and *The Little Mermaid* (Fiddlehead); *Mary Poppins* (New Bedford Festival); and *Pippin* (ReVision). His film work includes *Live by Night*, directed by Ben Affleck. Andrew holds a BFA in Musical Theatre from Boston Conservatory and is a proud member of AEA. Love and thanks to the creative team, Luedtke Agency, family, and friends. www.andrewwinans.com

Caroline Workman (*Ensemble*) is thrilled to perform in *Mary Poppins*—her sixth WFT production! Credits include Dance Captain in *Footloose* (CRLS); Minli in *Mountain...Moon* (Harwich Junior Theatre, WFT); Bet in *Oliver!* and Orphan in *Annie* (WFT); and Swing in *Billy Elliot the Musical* (Broadway). Special thanks to Russell, Rob, Nicky, Katie, the cast and creative team, Shelley, Jane, Sue, Deborah Mason and Cambridge Youth Dance Company, and family.

Eowyn Young (*Jane Banks*), age 11, is making her WFT debut! Favorite credits include: *Les Misérables* (Reagle), *A Christmas Carol* (NSMT), *Annie* (RTW), *A Christmas Celtic Sojourn Tour* (WGBH), and, with her twin brother, Jose Mateo Ballet Theatre's *Nutcracker*. Eowyn enjoys journaling and playing guitar and bass in her all-kids rock band, Hearts & Spades. Love and thanks to her family, Doug Jabara, Eva Kendrick, Denise Simon, DBA, and RKS for their constant support and guidance. XO to Russell, Shelley, and this talented cast!

Lisa Yuen (*Mary Poppins*) was last seen at WFT as Glinda in *The Wizard of Oz*. Local credits include Baker's Wife in *Into the Woods* and Beggar Woman in *Sweeney Todd* (Lyric); Lady Thiang in *The King and I* (NSMT); Christine Colgate in *Dirty Rotten Scoundrels* (Theatre by the Sea); Fiddlehead; and New Rep. Lisa performed for seven and a half years in *Miss Saigon* (Broadway) and *Spelling Bee* (original company), three national Equity tours, numerous regional theatres (including Papermill Playhouse, PCLO, Sacramento Music Circus, and the MUNY), Lincoln Center, and Carnegie Hall. TV and film credits include *All My Children*, *Body of Proof*, *The Today Show*, *The Martha Stewart Show*, *As the World Turns*, and *World Trade Center*. Lisa holds a BA from UCLA and is a real-life Mommy Poppins to three-year-old twins. Love to Mom, Kevin, family, and friends.



Macaroni Kid
Newton-Brookline

Bringing you LOCAL family friendly events, articles, crafts, recipes, reviews, giveaways and more!

www.newton.macaronikid.com

It's free to subscribe, but the content is priceless!

Disney and Cameron Mackintosh's

Mary Poppins

A Musical based on the stories of P. L. Travers and the Walt Disney Film

Original Music and Lyrics by Richard M. Sherman and Robert B. Sherman

Book by Julian Fellowes

New Songs and Additional Music and Lyrics by George Stiles and Anthony Drewe

Co-Created by Cameron Mackintosh

DIRECTOR/CHOREOGRAPHER

Russell Garrett*

MUSICAL DIRECTOR

Robert L. Rucinski

SET DESIGNER
Janie E. Howland

LIGHTING DESIGNER
Franklin Meissner, Jr.

COSTUME DESIGNER
Elisabetta Polito

PROPS DESIGNER
Marjorie Lusignan

PRODUCTION
STAGE MANAGER
Nicky Carbone*

SOUND DESIGNER
Roger J. Moore

SIGN PERFORMERS
Jola Leary, E. Sho Ndukwe,
Adrianna Kathryn Neefus, Crystal Ploof

AUDIO DESCRIBERS
Cori Couture,
Ruth Celia Kahn

THE CAST

Mary Poppins	Lisa Yuen*
Bert	Dan Reardon*
George Banks	Andrew Giordano*
Winifred Banks	Laura D. DeGiacomo*
Jane Banks	Lily Ramras, Eowyn Young
Michael Banks	Cameron Levesque, Asher Navisky
Mrs. Brill	Beth Gotha*
The Bird Woman	Gamalia Pharms*
Miss Andrew/Miss Lark	Shana Dirik*
Admiral Boom/Bank Chairman	Dale Place*
Robertson Ay	Pablo Torres
Mrs. Corry/Miss Smythe	Shannon Lee Jones*
Neleus	Andrew Winans*

ENSEMBLE: Rachel Abbate, Will Christmann, Katie Anne Clark (Dance Captain), Steven Del Col, Bransen Gates, Lenni Alexandra Kmiec*, Maria LaRossa, Carla Martinez, Michael Seltzer, Brian Shimasaki-Liebson, Andrew Winans*, Caroline Workman*

UNDERSTUDIES: Lenni Alexandra Kmiec* for Mary Poppins; Steven Del Col for Bert

There will be one 15-minute intermission between the acts.

Ask the House Manager for individual sound enhancement devices.

The taking of photographs and use of video or audio recording devices is strictly forbidden. Please turn off all electronic devices. Please, no eating or drinking in the theatre.

Flying effects provided by ZFX, Inc.

Open captioning provided in collaboration with c2 (caption coalition) inc, www.c2net.org.

MARY POPPINS is presented through special arrangement with Music Theatre International (MTI). All authorized performance materials are also supplied by MTI. 421 West 54th Street, NYC, NY 10019; Phone: 212.541.4684; Fax: 212.397.4684 www.MTIShows.com



The scenic, lighting, and costume designers of this production are represented by United Scenic Artists, Local USA-829 of the IATSE.



*Member of Actors' Equity Association, the Union of Professional Actors and Stage Managers in the United States. The Wheelock Family Theatre is operating under the terms of a Developing Theatre's Program of Actors' Equity Association. The contract used is a Letter of Agreement.



This program is supported in part by a grant from the Boston Cultural Council, a local agency which is funded by the Massachusetts Cultural Council and administered by the Mayor's Office of Arts and Culture.

MUSICAL PROGRAM

ACT ONE

Prologue.....	Bert
Cherry Tree Lane Part 1.....	Winifred, Mrs. Brill, Jane, Michael, Robertson Ay, George
The Perfect Nanny.....	Jane, Michael
Cherry Tree Lane Part 2.....	Winifred, Mrs. Brill, Jane, Michael, Robertson Ay, George
Practically Perfect.....	Mary Poppins, Jane, Michael
All Me Own Work.....	Bert
Jolly Holiday.....	Bert, Jane, Michael, Neleus, Mary Poppins, Ensemble
Let's Hope She Will Stay.....	George, Winifred, Jane, Michael
Winds Do Change.....	Bert
A Spoonful of Sugar.....	Mary Poppins, Jane, Michael, Robertson Ay, Winifred
Precision and Order.....	Ensemble, Chairman, Von Hussler, Northbrook
A Man Has Dreams.....	George
Feed the Birds.....	Bird Woman, Mary Poppins, Ensemble
Supercalifragilisticexpialidocious.....	Mary Poppins, Bert, Jane, Michael, Mrs. Corry, Ensemble
Supercalifragilisticexpialidocious Reprise/The Winds May Blow.....	Bert, Ensemble
Twists and Turns.....	Bert
Chim Chim Cher-ee.....	Bert, Mary Poppins

ACT TWO

Cherry Tree Lane Reprise.....	Mrs. Brill, Robertson Ay, Jane, Michael, Winifred, George
Brimstone and Treacle Part 1.....	Miss Andrew
Let's Go Fly a Kite.....	Bert, Park Keeper, Michael, Jane, Ensemble, Mary Poppins
Good for Nothing/Being Mrs. Banks.....	George, Winifred
Brimstone and Treacle Part 2.....	Mary Poppins, Miss Andrew
Practically Perfect Reprise.....	Jane, Michael, Mary Poppins
Step in Time.....	Bert, Michael, Jane, Ensemble, Mary Poppins
Down the Chimney.....	Bert, Ensemble
A Man Has Dreams Reprise/A Spoonful of Sugar Reprise.....	George, Bert
Anything Can Happen Part 1.....	Mary Poppins, Jane, Michael, Winifred, Bird Woman, Ensemble
Give Us the Word.....	George
Anything Can Happen Part 2.....	Mary Poppins, Bert, Jane, Michael, Ensemble (Full Company)
A Spoonful of Sugar Reprise.....	Mary Poppins
Bows.....	Full Company

ORCHESTRA

Robert L. Rucinski, *Piano/Conductor*

Vanessa Holroyd, *Flute/Piccolo* Kevin Price, *Clarinet/E^b Clarinet/Bass Clarinet* Sheldon Ross, *Trumpet*
 Meredith Gangler, *French Horn* Norman Gil Bristol, *Bass* Peter Broggi, *Drums/Percussion*

Wheelock Family Theatre is a member of the American Alliance for Theatre and Education (AATE); ArtsBoston; Cultural Access New England (CANE); MASSCreative; StageSource, the Alliance of Theatre Artists and Producers; and the Theatre Artists' Marketing Alliance (TAMA).



Wheelock Family Theatre

STAFF

Executive Director	Linda Chin
General Manager/Co-Artistic Director	Shelley Bolman
Director of Education	Lloyd Woodcock
Assoc. Director of Education/Managing Director, Theatre Espresso	Kortney Adams
Administrative Director	Kay Arden Elliott
Audience Engagement Coordinator	Marianne Adams
Director of Artistic Sign Language	Kristin Johnson
Supervisor of Patron and Student Services	Jamie Aznive
Technical Director	Matthew T. Lazure
Associate Technical Director/Sound Technician	James Williston
Assistant Technical Director/Master Electrician	Craig A. Zemsky
Crafts Director/Props Mistress	Marjorie Lusignan

PRODUCTION TEAM

Assistant Stage Manager	Jessica Trester
Choreographic Assistants	Katie Anne Clark, Andrew Winans
Costumer	Lisa Simpson
Costume Shop Staff	Anica Buckson, Jennie Hudson-Bryant, Jessica Moore
Captioning	Jamie Aznive, coordinator Kayloni Williams, compositor Sheelagh Cook, Nay Honain, Evan Kersey
Scenic Carpenters	Jeff Gardiner, Kris Kuss, Doughty Lee, Elliott Purcell, Jerry Wheelock, Mac Young
Electricians	Kaitlyn Burke, Matthew Breton, Bridget Collins, Dylan Foley, Harry Grillo, Julie Marie Langevin, Elliott Purcell, Yasmin Yacoby

EDUCATION PROGRAM FACULTY

Marianne Adams, Katherine Akerley, Esme Allen, Christy Betit, Brynnalee Blackmar, Danny Bolton, Kim Carrell, Cori Couture, Laura DeGiacomo, Andrea Doane, Kelly Dooley, Donna Folan, Ellie Friedland, Jeri Hammond, Kristin Johnson, Elbert Joseph, Ayisha Knight-Shaw, Deborah Kronenberg, Celia Lechtman, Jen Alison Lewis, Marjorie Lusignan, Dev Luthra, Thomas Adams Martin, Carla Martinez, Roxanna Myhrum, Grace Napier, John O'Neil, Jacqui Parker, Beth Peters, Stephen Reinstein, Sophie Rich, Samantha Richert, Ilyse Robbins, M. Lynda Robinson, Omar Robinson, Brittany Rolfs, Matthew Romero, Rebecca Schneebaum, Donna Sorbello, Rita Thompson, Kaitee Tredway, Fran Weinberg, Alan White

CREWS, WORK/STUDY STUDENTS, AND INTERNS

Christina Bebe, Melissa Campo, Rae Copans, Rachel Costello, Nora Dweh, Ashley Gryval, Emily Hart, Anna LaRose, Carina Lawrence, Cayla Lemire, Carolyn Lopez, Hailee Markunas, Maha Mian, Jessica Moore, Laura Morgan, Lauren Ofshay, Eliu Olmo, Rachel Otfinoski, Davis (DJ) Piper, Kiran Raza, Anthony Romero, Jessica Romero, Briana Simmons, Jetta Smith, Patrick Snyder, Kyra Thomas, Jessica Trester, Shaila Vaden, Kathryn VanSteenbergen, Doris Vincent, Emma Wilson, Max Workman

SPECIAL THANKS

The 2011 *Mary Poppins* Broadway in Boston ASL Team: Elbert Joseph, Kristin Johnson, John McGinty, and Jessica Winiecki; Zohar Azoulay; Charles G. Baldwin; Danny Bolton; Lindsay Clinton; Sanjeev Joshi; Rachel LeBlanc; Danielle Lusignan; Stephen Reinstein; Frank Romero and members of the Wheelock College Facilities staff; Grace Schifilliti; Nancy Viall Shoemaker; Lorie Spencer; Joe Stallone; Julia Talbot for poster design; Jerry Wheelock; Arthur Wheelock-Wood; Carol Whitehead; Jake Wilkenfeld-Mongillo; Tom Workman; Ezra and Jodi Leduc Zemsky

We wish to thank all the people who have joined with us since the program went to press.

TENACRE SCHOOL



Pre-K to Grade 6 • Coed • Wellesley • www.tenacrecds.org



Tenacre nurtures and challenges each child, every day.

Call us to schedule a visit: 781.235.2282

Tenacre's production of *Disney's The Little Mermaid JR.*, May 2014



Puppet Showplace Theater

FEBRUARY VACATION WEEK



Little Red and the Gingerbread Man

Tues-Thurs, February 16 - 18

Trickster Tales

Fri-Sun, February 19 - 21

617-731-6400 x 101 • 32 Station St Brookline, MA
www.puppetshowplace.org



Students are immersed in a musical theater intensive program that emphasizes artistic growth and building confidence! Our summer program is appropriate for all levels - from your first show to the pre-professional actor!

Summer 2016

Theater Workshops



June 27 - August 19

Choose 1-2 week sessions!

Located in Sudbury, MA

Choose exciting musicals such as: *Peter Pan*, *Hairspray*, *James & the Giant Peach*, *Aida*, *Winnie the Pooh*, *13 the Musical*, and more!

Proud to support WFT and all of our student performers!

www.performingartsconnection.com

978-443-2400

Wheelock Family Theatre Advisory Board

WFT's Advisory Board is a group of dedicated individuals from broad and diverse segments of the community who provide support and expertise to WFT's staff and artists on an ongoing basis. We are grateful for their insights and their enthusiasm.

Carola Cadley, Co-Chair, VP, Corporate Development and Marketing, Children's Hospital Trust, Boston

Carole Charnow, Vice Chair, President and Chief Executive Officer, Boston Children's Museum

Eleanor Chin, Principal, Clarity Partners Coaching and Consulting, Jamaica Plain

Jeff Coburn, Co-Chair Emeritus, Managing Director, Coburn Consulting, Boston

Ceronne B. Daly, Director of Diversity Programs, Office of Human Resources, Boston Public Schools

Mindy d'Arbeloff, Co-Chair, Deputy Chief of Staff, Executive Office of Governor Charlie Baker, Commonwealth of Massachusetts

Lauren Doherty, Parent Volunteer, Dover

Rosario A. Dominguez, Consultant to Nonprofits, Malden

Priscilla Fales, Teacher, Beacon Hill Nursery School, Boston

Andrea (Andi) Genser, Executive Director, WE CAN Corporation, Harwich Port

Nancy Gertner, Professor of Practice, Harvard Law School, Cambridge

Lillian Gonzalez, Principal, Gonzalez & Associates P.C., Stoughton

Charles (Chuck) B. Gordon, President and CEO, The New Kensington Group, North Reading

Eric Hermanson, Attorney, White & Williams LLP, Boston

Steven M. Key, Esq., Attorney, Law Office of Steven M. Key, Boston

Susan Kosoff, Co-Founder, Wheelock Family Theatre

Meenakshi B. Kumar, M.D., Functional Medicine, Family Medicine, Palliative Care Physician, Kumar Conscious Health, LLC, Boston

Robin Mount, Co-Chair Emerita, Director of Career, Research, and International Opportunities, Office of Career Services; Harvard University, Cambridge

Sharon Rich, Financial Planner, WOMONEY, Belmont

Paul Rivenberg, Communications and Educational Outreach Coordinator, MIT Plasma Science and Fusion Center, Cambridge

Brooke Sandford, Parent Volunteer, Sudbury

Jane Staab, Co-Founder, Wheelock Family Theatre

Meegan Turet, Fine Arts Chair, Academy of the Pacific Rim Charter Public School, Hyde Park

Wheelock Family Theatre extends deep appreciation to the following members of the Wheelock College community for their support:

President Jackie Jenkins-Scott; Stephen Dill, Marketing Manager; Michael Fesko, Director of Campus Services; Marjorie Hall, Chair of Arts; Adrian K. Haugabrook, VP for Student Success and Engagement; Ed Jacques, Director of Facilities; Anne Marie Martorana, VP and Chief Financial Officer; Stephen Muzrall, Director of Major Gifts and Planned Giving; Larisa Pazmiño, Director of Corporate Relations; Jennifer Rice, VP for Development and Alumni Affairs; Marta T. Rosa, Executive Director, Department of Government & External Affairs, and Community Impact; and Roy Schifilliti, VP for Administration, Institutional Effectiveness, and Innovation.

inspire a world of good | WHEELOCK
COLLEGE

Wheelock Family Theatre Supporters

Wheelock Family Theatre gratefully acknowledges the following generous individual and institutional donors who share our dedication to making professional theatre **accessible, affordable, and inclusive**.

Individual Donors to the Annual Fund

Angels (\$1,000 and up)

Atlantic Philanthropies Director/Employee Designated Gift Fund
 Dr. Liliانا Bordeianou and Eric B. Hermanson
 The Brakeman Family
 Carola Cadley
 Jeff Coburn
 Daughters Fund, a Donor Advised Fund of Combined Jewish Philanthropies, at the recommendation of Sharon L. Rich and Nancy E. Reed
 Priscilla Fales
 Nancy Gertner and John Reinstein, for the Emerging Playwrights Program
 The Hanenberger Family
 Elizabeth G. Hoskins
 Brooke and Neal Sandford
 Darla Soukas

Leading Players (\$250-\$999)

Anonymous (1)
 Janet Bailey
 Danny Bolton
 Leann Canty
 Tina and Harvey Crosby
 Kay Arden Elliott
 Andrea Genser
 Leslie E. and Charles B. Gordon
 Philip Jacob
 Daniel LaChance
 Jan and Whitney Meyer, in honor of Charles G. Baldwin
 Antonia and Joseph Nedder
 Georges and Carolyn Peter, in honor of Wade Taylor and Steve Zinner
 David A. Roberts
 Saul Schottenstein Foundation
 Nancy Viall Shoemaker
 The Simshauser Family
 Jerry Wheelock and Elizabeth Wood
 Katie and Marshall Wolf
 Michael and Julie Woodall
 Kellie Young

Supporting Players (\$100-\$249)

Anonymous (4)
 Olivia and Detris Adelabu
 Janet Allen
 Lori Ashline and Jerry Gates
 Diana Bauer
 Mindy Berman and Dan Solomon
 Alan and Debbie Bieri
 Shelley Bolman
 Marilou Bonetti
 Debra K. Borkovitz
 Mary Carson
 Barbara Cevallos
 Carole Charnow
 Marla Choslovsky and Paul Greenberg
 Jason and Courtney Cole
 Ceronne Daly
 John Davin
 Andrea E. Doane
 Natalie Eldridge and Libba Ingram
 Bess Emanuel and John Vyhnanek
 Lindsay Garofalo
 Dot Gorenflo
 Anne and Jim Howard
 Chobee Hoy
 Olivia, Jack, and Hannah Kaplan
 Elizabeth Keegan
 Sally Kindleberger
 Susan Kosoff
 Ulla C. Malkus
 Lindsay Morand
 Tedi and Marc Najarian
 Grace Napier and William Monnen
 Greg Nash
 Elaine and Joe Paster
 Jennifer Carr Rice
 The Roberts-McInturff Family
 Josephine Ross
 Marcia and Greg Rutledge
 Susan and Matthew Ryan

David and Anne Salant
 Joey Schotland Family
 Betty and Herman Scott
 Evelyn Shen and Jason Tong
 Anita Smith
 Ruthann Sneider
 Jacqueline Spencer
 Mr. and Mrs. George R. Sprague
 Jane Staab
 Stephen H. Zinner and S. Wade Taylor

Institutional Supporters

Actors' Equity Foundation
 Au Bon Pain
 Boston Center for Blind Children
 Boston Children's Hospital
 Boston Cultural Council
 Boston Parents Paper
 Cabot Family Charitable Foundation
 Cape Air
 The Cricket Foundation
 Marion L. Decrow Memorial Foundation
 EdVestors
 Eileen Fisher
 Fuller Foundation
 Liberty Mutual Foundation
 Massachusetts Cultural Council
 Peabody Foundation
 Wheelock College
 Yawkey Foundation

This list reflects gifts received between 7/1/15 and 1/22/16.

We greatly appreciate, although we cannot list, 91 individual gifts of less than \$100.

SAVE ME A SEAT Campaign Donors

Thank you to those who are helping us meet the MCC challenge!

Marjorie Bakken
 Cabot Family Charitable Foundation
 Daniel S. Cheever
 Linda Chin
 The Clifford Family Foundation
 Laurel Conrad
 Patricia Cook
 Suzanne Costello and Jeff Keffer
 Mindy d'Arbeloff

Priscilla Fales
 Elizabeth V. Forrester
 Deirdre Frank
 Maria and Todd Giatrelis
 Jackie Jenkins-Scott
 John F. Knutson
 Susan Kosoff
 Eliane Markoff

Jennifer Carr Rice
 Roy Schifilliti
 Jane Staab
 Daniel Stein
 The Cast of *The Trumpet of the Swan*
 Vertec Corp.
 Jeff Walsh Painting
 Wheelock College Alumni Association
 Endowment Fund

To make a tax-deductible donation to Wheelock Family Theatre, please contact Kay Arden Elliott at 617.879.2252 or kelliott@wheelock.edu or visit www.wheelockfamilytheatre.org.

See you in the spring . . .

A Year with Frog and Toad • April 15-May 15, 2016

BostonParents PAPER

Wishing Wheelock Family Theatre another successful year!
Pick up a Boston Parents Paper monthly or visit us online at bostonparentspaper.com

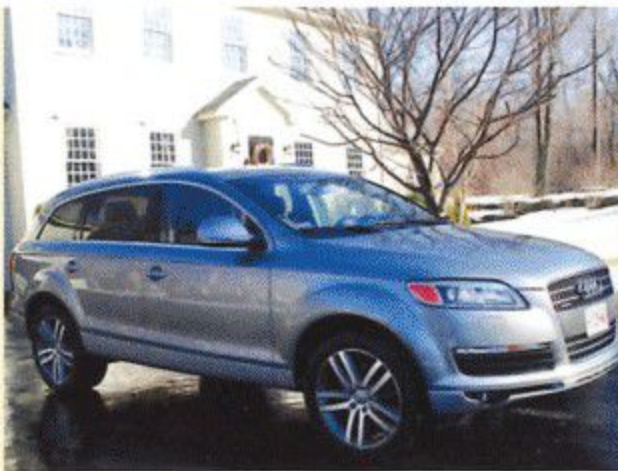


"Like" us on Facebook – facebook.com/bostonparentspaper
Follow us on Twitter – twitter.com/bostonparents



www.chinsurance.com

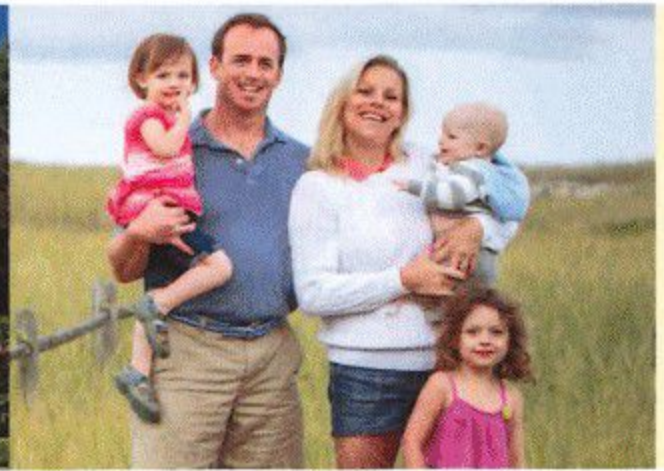
Managing your risk and protecting *your* interests.



Auto Insurance



Homeowners Insurance



Business Insurance

Life & Employee Benefits



CORCORAN & HAVLIN INSURANCE GROUP



287 Linden Street
Wellesley, MA 02482
781 235 3100

77 North Street
Medfield, MA 02052
508 359 5555

24 Bay Road
Duxbury, MA 02331
781 934 6500



At Wheelock, our mission is to improve the lives of children and families. Everything we do, from academic programs to community service and partnerships to advocacy has our mission at its core. It's not easy. Just worth it. Are you tough enough to inspire a world of Good?

Learn more at wheelock.edu/toughenough

inspire a world of good

WHEELOCK
COLLEGE