

WHEEL^{LOCK}
FAMILY
THEATRE

The Phantom Tollbooth

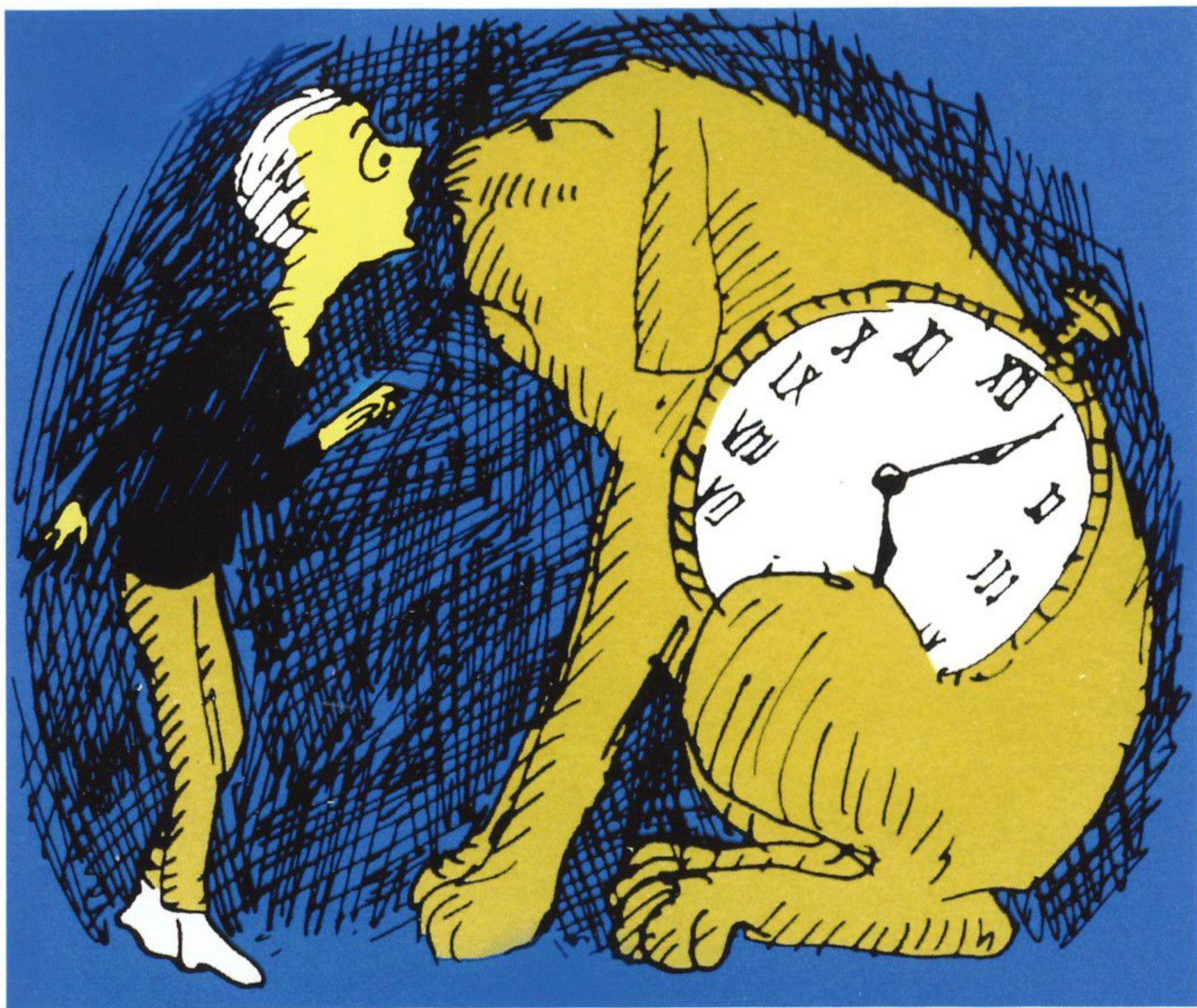


Illustration used with the permission of Jules Feiffer

October 21 – November 20, 2011



Friday, November 18 at 7:30 & Sunday, November 20 at 3:00



JARED BOWEN IS
CAUGHT IN THE ACT

It's hard to keep up with Jared.

He's always checking out the latest in Boston theater, music, art and movies. Luckily, he loves to talk about it.

Catch him at wgbh.org/centerstage,
Fridays on WGBH 2 during
the PBS Arts Fall Festival or on
Twitter at @JaredWGBH

WGBH

October/November 2011

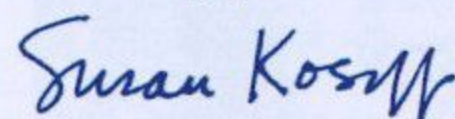
Dear Theatre-goer,

Welcome to the start of Wheelock Family Theatre's fourth decade of producing professional, affordable theatre for all generations. What makes your experience here distinctive is our unwavering commitment to inclusive, high-quality theatre—a commitment that is realized by our play selection, colorful casting policy, affordable ticket prices, education program for young people, and access provisions for people with disabilities.

We produced the professional premiere of the musical adaptation of Norton Juster's iconic classic *The Phantom Tollbooth* in 2003 to the delight of audiences young and old. It is an honor to have been asked to bring the show to life again on the WFT stage on the occasion of and in celebration of the 50th anniversary of the book's publication. Norton Juster's dramatization of his own novel allows the story to retain its richness and essential character while being told through a new medium. Arnold Black's memorable music, Sheldon Harnick's clever lyrics, the artistic team and actors' imaginative interpretations, all illuminate the story in wonderful—full of wonder—ways.

Now let us take you on a journey for which there is plenty of Rhyme and Reason, one which will take you out of the Doldrums, well Beyond Expectations, to a Fine, Fantastic Afternoon. We hope the play's message—that engagement with life and learning is its own reward—continues to resonate with you long after the curtain closes.

Sincerely yours,



Susan Kosoff, Producer



Boston Trust & Investment
Management Company



Walden Asset Management
Advancing sustainable business practices since 1975

Cheers to your 2011-2012 season!

Boston Trust & Investment Management Company
One Beacon Street | Boston, Massachusetts 02108 | 617.726.7250 | fax: 617.227.2690



**Did you know . . .
Wheelock Family Theatre has
special birthday packages?**

Have your party in a private room.
Take a backstage tour.
Enjoy a theatre workshop.

Reduced ticket prices are also available for birthday groups!

For additional information:

617.879.2300

tickets@wheelock.edu



UNDERGRADUATE & GRADUATE
DEGREES IN EDUCATION, SOCIAL
WORK, ORGANIZATIONAL
LEADERSHIP, & LIBERAL ARTS

**WHEELOCK
COLLEGE**

For more info: wheelock.edu



Lucy Annett (ASL Interpreter) is a Boston-based interpreter whose credits include *Hair the Musical* (Broadway Across America–Boston), *Thoroughly Modern Millie* (the Wang), and *A Midsummer Night's Dream* (Commonwealth Shakespeare). WFT credits include *Ramona Quimby*, *A Little Princess*, and *Holes*. Lucy interpreted the professional premiere of *The Phantom Tollbooth* at WFT and is thrilled to be making her return to the show. Many thanks to the team, Kristin and Michael, and big love to her family—Michael and Cora.

Valerie C.M. Ching (Audio Describer) is glad to be working on another Wheelock production! Other WFT description credits include secondary describer for *The Secret Garden*, *Seussical*, *Beauty and the Beast*, *Lilly's Purple Plastic Purse*, *Tuck Everlasting*, *Inherit the Wind*, and *The Sound of Music*.

Laurel Conrad (Choreographer) is honored to be returning for her 8th season at WFT—where she has had the fortune to choreograph all of WFT's musicals and, occasionally, to perform. Her work here has earned her two IRNE Awards for Best Choreography for *Seussical* and *Will Rogers Follies*. Love to Jane and Sue to whom she is very grateful for the incredible chance to work with an amazing theatre company and wonderful people, creating a second family for her. Also, much love to Molly, Nyssa, and the love of her life, Mario, for their support and encouragement. xoxo

Ryan Cook (Friend of Milo, Ensemble) is an 8th grader at the Devotion School in Brookline. His credits include Charlie Bucket in *Willy Wonka* and Charles Bates in *Oliver!* (Footlight Club), Frank Jr. in *Merrily We Roll Along* (BU), Kurt in *The Sound of Music* (Metrowest Family Theatre), and *A Year with Frog and Toad* (BCT). Ryan saw his first WFT show at the age of 6, and he is thrilled to have the chance to be onstage in this production. Thanks to his teachers for exposing him to theatre and encouraging him to join in on the fun.

Aimee K. Doherty (Demon of Insincerity, DeciBelle) is excited to return to Wheelock, having previously appeared in *ANNIE* (Grace) and *HONK!* (Ida). Other Boston area credits include *RENT* (Maureen), *World Goes 'Round* (Woman 3), *Last 5 Years* (Kathy), *Hot Mikado* (Pitti-Sing), *Speed the Plow* (Karen), *Cabaret* (Sally Bowles), *Tick, Tick...Boom!* (Susan), *Wild Party* (ensemble/Queenie u/s), *Ragtime* (Evelyn Nesbit), *Into the Woods* (Cinderella), and *Darling Divas Deck the Holidays* with New Rep; *Animal Crackers* (Mrs. Whitehead/Arabella), *Grey Gardens* (Young Edie), *Follies* (Young Phyllis), *See What I Wanna See* (Kesa/the wife/an actress), and *Adrift in Macao* (Lureena) with the Lyric; *The Pain and the Itch* (Kelly) with Company One; *Nine* (Luisa), *The Women* (Peggy), *Bubbly Black Girl..* (Scarlet), and *Company* (Kathy) with SpeakEasy; *On the 20th Century* (Anita) with Overture; and *The Dinosaur Musical* (Mindy) with the Stoneham. Aimee has received IRNE acting nominations for her work in *ANNIE*, *HONK!*, *Cabaret*, *Speed-the-Plow*, *The Pain and the Itch*, and *Grey Gardens*. In addition to acting, she is a freelance environmental consultant with Doherty Environmental Consulting.

Wayne Fritsche (Advisor, Dr. Dischord) is grateful to make his WFT debut. He appeared as Reynaldo in Commonwealth Shakespeare's *All's Well that Ends Well*, T. Stedman Harder in the Nora's *A Moon for the Misbegotten*, Inspector Hound in *The Real Inspector Hound* with the Publick, and Robert in Harold Pinter's *Betrayal* at the BCA Calderwood Pavilion. He covered the role of Lincoln in Paula Vogel's *A Civil War Christmas* and Edward and Abe in Richard Nelson's *How Shakespeare Won the West* for the Huntington, as well as Hamm in Samuel Beckett's *Endgame* at the ART. Other roles include Ziegfeld in *Funny Girl!* and Mr. Sowerberry in *Oliver!* (Fiddlehead), Marcus Lycus in *A Funny Thing...Forum* (Boston TheatreWorks), and Body in the world premiere of *Monsters the Musical* (Centastage). Wayne's cabaret show *Get Over It!* premiered at Ryles Jazz Club over Valentine's Day weekend earlier this year.

Lindsay D. Garofalo (Production Stage Manager) is very excited to be returning to WFT for her 4th season as stage manager. Some of her favorite shows that she has been a part of are *Les Misérables*, *Seussical*, *Hedda Gabler*, *Romeo and Juliet*, *The Sound of Music*, *Noises Off*, *Macbeth*, *HONK!*, and *Living Out*. A big thank you to her family for always supporting her, and to Dan for always keeping her calm.

Trey Gaskin (Young Prince, Ensemble) is thrilled to be returning to the Wheelock stage. He was recently seen here as a storyteller in the Summer Youth Intensive production of *Once on this Island Jr.* Other WFT summer credits include *Fiddler on the Roof* and *A Year with Frog and Toad*. His mainstage credits here include *HONK!* and *Charlotte's Web*. Trey is a student at Thayer Academy and enjoys singing and tap dancing in his free time. Thanks to Jane for the chance to be in another fantastic WFT production!

De'Lon Grant (King Azaz, Voice of the Tollbooth) returns to WFT having been seen last year in *The Little Mermaid*. He just finished an acclaimed production of *Big River* (the Lyric) in which he played Jim. Most recently he had the honor of being part of the casts of *World Goes 'Round* and *Passing Strange* (New Rep) and made his Actors' Shakespeare debut in *Cymbeline* this year. Other area credits include *Harriet Jacobs* (Underground Railway), *...Spelling Bee* (the Lyric), *Dessa Rose* (New Rep), and *A Tale of Two Cities*, *Seussical*, and *Saint Joan* (WFT). Other regional credits: *RENT* (Roxy) and *Urinetown* (Gallery Players). De'Lon has a BFA in Acting from the University of Michigan, and an MM in Musical Theatre from the Boston Conservatory. See more at: www.delongrant.com.

Taylor James (Demon, Ensemble) is a freshman at Brookline High. She has performed with Artbarn Community Theater for 8 years, and had the leading role in her 8th grade musical. This is her second Wheelock production, *ANNIE* being her first. Taylor enjoys singing, reading, and spending time with her friends and family.

Emma Joanis (Friend of Milo, Ensemble), a 12-year-old from NH, is thrilled to make her WFT debut with the amazing cast of *The Phantom Tollbooth*. She has been participating in regional and community theatres for the past 5 years and was most recently seen in *ANNIE* at the Maine State Music Theatre. Past favorite roles include *Ghost of Christmas Past*, *Dorothy*, *Gertrude McFuzz*, and *Annie*. Emma had the honor of singing at Fenway Park last spring and was recently chosen to sing the national anthem at TD Garden for the Bruins. She thanks Jane for giving her this chance, and sends love and thanks to her family and friends for their support.

Norton Juster (Author) wrote *The Phantom Tollbooth* in order to avoid another project he was supposed to be doing, a motivation that has carried through much of his career. He

(continued on page 6)



AMBIENCE Boston
 INTERIOR DESIGN
 FLORAL DESIGN
E. Ann Whittington
 Proprietor
 P.O. Box 181232
 Boston, Massachusetts 02118
 Tel. (617) 267-3049
 E-mail: annwhittington@comcast.net

brookline booksmith
an independent bookstore for independent minds

Monday-Thursday 8:30 AM - 10:00 PM
 Friday 8:30 AM - 11:00 PM
 Saturday 9:00 AM - 11:00 PM
 Sunday 10:00 AM - 8:00 PM

279 Harvard Street . Brookline, MA
www.brooklinebooksmith.com

Providing both buyers and sellers with the highest quality professional real estate brokerage services available.

Chobee Hoy associates

18 Harvard Street
 Brookline, Massachusetts
 02445

617 739 0067

ROFFI
 SALON & DAY SPA

The curly hair expert in Boston
 Ouidad Certified

134 Newbury Boston 02116 michaelroffi.com



got talent?
make the most of it!

**WHEELOCK
FAMILY
THEATRE**

Education Program

weekly classes
vacation week institutes
summer program

for ages 6-16

teen classes start in November

information and registration:

online

www.wheelockfamilytheatre.org



phone

617.879.2252/2235

email

kelliott@wheelock.edu



WHO's WHO (continued from page 5)

has also practiced as an architect for much of his life and taught at Pratt Institute in NY and Hampshire College for over 30 years. This year marks the 50th anniversary of the publication of *The Phantom Tollbooth*, his first book. His work includes *The Dot and the Line*, a mathematical romance that was made into an Academy Award-winning animated film; *Alberic the Wise*, a collection of short stories set in medieval Europe; *The Hello, Goodbye Window*, inspired by his granddaughter Tori, which received the Caldecott medal in 2006; *The Odious Ogre*, in which he again teams up with Jules Feiffer, the illustrator of *The Phantom Tollbooth*; and *Neville*, the story of a boy who has to move from his old neighborhood but desperately doesn't want to. Norton Juster is also quite proud of his accomplishments as a bareback rider, swordsman, and hypnotist, despite the fact that no one believes a word of it.

Emma Rosz Kelley (*Demon, Ensemble, u/s Milo*), an Andover 7th grader, has been involved in theatre since she was 7 years old. Her credits include the title role in *ANNIE* (Pentucket Players); Cassie in *13*; Rhoda Penmark in *The Bad Seed* (Acting Out!), her favorite role so far; and the Baker in *Joseph...Dreamcoat*. She has also been seen in *Cinderella*, *South Pacific*, *The Wizard of Oz*, and *Oliver!* Emma is happy to be in her first production at WFT!

Matthew T. Lazure (*Set Designer*) has designed sets for the Gold Dust Orphans (*Medea, All About Christmas Eve, and Peter Pansy*); Provincetown Theatre (*Santaland Diaries*); and Pee Wee Players of Provincetown (*The Absolutely Amazing Adventures of Heidi and Alice in Wonderland, A Musical Curiosity*). His set designs for WFT include *HONK!*, *Lilly's Purple Plastic Purse*, *Charlotte's Web*, and *The Secret Garden* (Elliot Norton nomination). Matthew's costume designs have been seen on the WFT stage in *Beauty and the Beast*, *Peter Pan*, *Saint Joan*, and *Snow White* (IRNE nomination). A Mass College of Art graduate, he shows his fine art in Boston, Provincetown, and online at matthewlazure.com.

Marjorie Lusignan (*Props Designer*) is a Rhode Island native, enjoying her 4th season of taking props to a whole new level at WFT. She continues to create things beyond her wildest expectations, and shares her skills and talents with young people as a member of WFT's Education Program faculty.

Mansür (*The Humbug*) has performed with WFT for more than 20 years in *Winnie-the-Pooh*, *The Music Man*, *Charlotte's Web*, and *Beauty and the Beast* among many others. He has also worked with many theatre companies in the area and has toured around the country. Look for Mansür in *Bird Song*, the story of Charlie Parker.

Shonna McEachern (*DeciBelle, Ensemble*) is happy to be making her debut at WFT! She was recently seen in the Huntington's production of *Candide*. Past favorite roles include Cathy in *The Last Five Years*, Susan in *Tick, Tick...Boom!*, Yitzhak in *Hedwig and the Angry Inch* (Tortoise and Finch), Percy in *The Spitfire Grill* (Concord Players), Rona in *...Spelling Bee* (Lynn Arts After Dark), Lizzie in *Baby* (TCAN), the Baker's Wife in *Into the Woods* (Salem Summer), Emma in *Jekyll and Hyde* (NCT), Bobbi/Gabby in *City of Angels*, Martha in *The Secret Garden* (Longwood Players), Sally in *Reefer Madness*, Magenta in *Rocky Horror* (Loki Arts), Johanna in *Sweeney Todd* (WCLOC), and Tzeitel in *Fiddler on the Roof* (Reagle Summer). A graduate of the American Musical and Dramatic Academy, Shonna sings with cover band Close Enough (www.closeenoughrocks.com). Love to family, friends, and Kevin.

Franklin Meissner, Jr. (Lighting Designer) is pleased to return after designing the lighting for last season's *The Secret Garden*. Recently, his lighting was featured in the world-premiere production of *The Wrestling Patient* at SpeakEasy. He also recently designed *Hot Mikado* at New Rep, for which he has designed 17 other productions, including the critically acclaimed *Wild Party* (IRNE nomination), *Cabaret*, *Dessa Rose*, *Sweeney Todd* (IRNE Award), *Into the Woods*, *Ragtime*, and *Moby Dick* (IRNE Award). Last year, he designed the lighting for *According to Tip* at the Stuart Street Playhouse and at The Lyric Stage, as well as for its original, sold-out run in Watertown. His work has also been seen Off- and Off-Off Broadway in NYC, at Boston Playwrights' (IRNE Award), the Central Square, the Lyric, the Stoneham (IRNE nomination), Company Theatre, NSMT, South Shore Music Circus, Sanders Theatre, various corporate events and colleges around the state, and 40 Carnegie Hall performances. Frank is a member of United Scenic Artists. For more info: www.FranklinMeissner.com.

Roger J. Moore (Sound Designer) has been with CBS Radio – Boston for over 20 years and is currently the Assistant Production Director and commercial voice of 98-5 The Sports Hub. His voice has been featured on various regional and national radio and television spots. He also enjoys freelance video production. Roger is currently the stage manager and sound designer for the Gold Dust Orphans (*Phantom of the Oprah*, *All About Christmas Eve*, *Death of a Saleslady*) and has worked with WFT since 2008.

Joseph Nedder (Friend of Milo, Ensemble) is in the 6th grade and thrilled to be making his WFT debut. He was last seen as Colin in *The Secret Garden* with Longwood Players. Other favorite roles include JoJo in *Seussical Jr.* and Wilson in *Lilly's Purple Plastic Purse*, both with BCT, and Mike Teavee in Footlight Club's *Willy Wonka*. Joseph loves music and plays the drums, guitar, trombone, and piano.

Andrew Oberstein (Whetherman, Advisor) is excited to be making his WFT debut! Boston credits include *RENT* (New Rep) and *The Wonderful World of Dissocia* (Apollinaire). Regional credits include *A Taffeta Wedding* (Broward Stage, FL); *Romeo and Juliet* (Forestburgh Playhouse, NY); *A Midsummer Night's Dream* (CLOSBC, LA); *Dandelion Wine* (the Colony, LA); *John Denver's Country Roads* (Granbury Opera House, TX); *The Music Man* (Galveston Island Musicals, TX); and *Brecht on Brecht* (Edinburgh Fringe Festival). Andrew holds a BFA in Musical Theatre from Emerson and has studied with Steppenwolf Theatre.

Ilyse Robbins (Advisor, Cook, Ensemble), an actress, choreographer, director, and teacher, is thrilled to be back on the WFT stage for her 10th production! Favorite roles include Joyce/Evie (*The Sparrow*), Truvy (*Steel Magnolias*), Little Becky Two-Shoes (*Urinetown*), and Mae (*Wild Party*, IRNE for Best Ensemble). Other regional credits include the Reagle, Publick, Jewish Theatre of NE, and numerous commercials. Ilyse was most recently seen in the benefit performance of *MOMologues* for Metro Stage and the Ellie Fund. This year she directed/choreographed *World Goes 'Round* for the New Rep, *42nd Street* for the Stoneham, and *Once on this Island Jr.* for WFT's Summer Youth Intensive. She is currently directing/choreographing a benefit for UpStage Lung Cancer celebrating the music of Leonard Bernstein. Ilyse holds a BS in Theatre from Northwestern, certification from the British American Drama Academy, and an EdM from Harvard. She currently teaches at Brandeis, Wheelock College, and WFT. This holiday season, she will again be choreographing and performing in *A Christmas Carol* at the Hanover Theater in Worcester, her hometown. Ilyse sends love to her husband and kids who are so glad to see her in one of their favorite books come to life.

(continued on page 8)



confidence
creativity
collaboration

A community that values academic, social, and emotional growth equally.



Pre-K – Grade 6

69 Grove St., Watertown, MA
617-923-4156 | atrium.org



Carolle Photography

Photography for the Performing Arts

headshots • productions • events • CDs • portraits

Kippy Goldfarb

617.946.4664 carollephoto@aol.com

Dave's AUTO REPAIR

"Proud to keep the Family Driving"

- Complete Auto Repair
- Inspection Stickers
- Towing Services
- Transmissions
- Suspensions

All Service is Guaranteed

880 Commonwealth Ave (rear)
617-739-3100 617-566-2235

**BEST WISHES
and
CONTINUED SUCCESS**

from

**LILLIAN GONZALEZ,
CPA, MST, CSEP**

14 Page Terrace
Stoughton, MA 02072
(781) 344-1040
FAX (781) 344-4449

www.go-cpas.com

**CERTIFIED
PUBLIC
ACCOUNTANTS**

- ACCOUNTING
 - AUDITING
 - TAXES
- FINANCIAL PLANNING
- RETIREMENT PLANNING
 - ESTATE PLANNING

WHO'S WHO (continued from page 7)

Brian Richard Robinson (*Mathemagician*), last seen here in *HONK!*, is excited to be back at WFT reprising his role as the Mathemagician. He has been a soloist with the Boston Symphony and the Boston Pops, and is a longtime member of the Tanglewood Festival Chorus, performing at Symphony Hall, Tanglewood, Carnegie Hall, and numerous international venues. Regionally, Brian has appeared in *Trouble in Tahiti*, *Jerry Springer: The Opera*, *Seussical*, *Tick, Tick...Boom!*, *Bubbly Black Girl...*, *Caroline, or Change* (Elliot Norton), *Songs for a New World in Concert* (musical direction by composer Jason Robert Brown), *Sweeney Todd in Concert*, *Strike up the Band*, *The Threepenny Opera*, *Side Show* (IRNE, Best Supporting Actor in a Musical), *When Pigs Fly* (IRNE, Best Supporting Actor in a Musical), *The Will Rogers Follies*, *The Gig*, *Passion*, *The Wild Party* (LaChiusa), and *A New Brain*. While a Yale undergraduate, Brian sang with The Whiffenpoofs. He is also a graduate of Tufts School of Medicine.

Robert L. Rucinski (*Music Director*) is very excited to be a part of this production. He works as a freelance music director, pianist, and conductor, and is active with many theatres and school programs throughout the region. Robert works frequently at NSMT, most recently as the local children's music director for *The King and I* and annually with their production of *A Christmas Carol*. Previous NSMT credits include *Crazy for You*, *Cinderella*, *Seven Brides for Seven Brothers*, and *Damn Yankees*. Robert has also worked with Seacoast Rep, the Palace (Manchester, NH), the Reagle, Papermill (Lincoln, NH), and BCT, performing in a variety of shows such as *Cats*, *The Wedding Singer*, *A Year with Frog and Toad*, *RENT*, *All Shook Up*, and *The Full Monty*. Last winter, he was invited back to MIT (his alma mater) as a guest soloist for Gershwin's "Rhapsody in Blue" with the MIT Concert Band. Originally from Jersey City, NJ, Robert currently resides in Arlington.

Whitney Sandford (*Friend of Milo, Ensemble*) is delighted to return to WFT, having previously appeared in *ANNIE* (Kate) and *Charlotte's Web* (Narrator). Most recently, she was seen as Little Sally in *Urinetown* with the Nobles Theatre Collective. Other favorite credits include *Fiddler on the Roof* (Bielke) with the Wellesley Players, *Full* (Angie) at the Turtle Lane Young Actors Winter Festival, the national tour of *Chitty Chitty Bang Bang* (Orphan, Boston Company), and *Eurydice* (Little Stone) at the New Rep. In addition, Whitney was a member of the Friends of Broadway for 4 years and has performed with Reagle Music Theatre, Metrowest Family Theatre, Worcester County Light Opera, the Weston Friendly Society, and Needham Community Theatre. Many thanks to Jane and the cast and crew for a wonderful experience!

Robert Saoud (*Terrible Trivium, Midget/Giant*) was most recently seen as Underling in *The Drowsy Chaperone* at SpeakEasy. Nationally he toured in *Groucho* as Chico Marx with Gabe Kaplan as Groucho. NE credits include the Huntington, NSMT, Trinity Rep, Lyric, New Rep, Stoneham, and Publick. Robert is happy to report that this is his 13th show at WFT! He has appeared in numerous cabarets and is a Fellow of the 2000 Eugene O'Neill Cabaret Symposium. Thanks to Sue, Jane, and all the wonderful folks at Wheelock. He is a proud member of the Actors' Equity Association.

Jenna Lea Scott (*Senses Taker, Spelling Bee, Cook, Dance Captain*) is grateful to be back on the WFT stage and working with director Jane Staab, who keeps her on her toes. Recent credits include *ANNIE*, *...Spelling Bee*, *HONK!*, *The Dinosaur Musical*, and *Seussical*. Jenna is a graduate of the American Musical and Dramatic Academy, NYC. *The Phantom Tollbooth* was one of Katie Scott's favorite movies and, in her memory, Jenna would like to dedicate her performance to her beloved sister.

Abigail Seidel (Teen, Noun) is a junior at Wheelock College and thrilled to be part of this wonderful cast for this fantastic show! She was last seen here in *ANNIE* during WFT's 30th season. Abigail most recently performed at Symphony Hall for the second time with an organization called Voices of Hope. Other credits include Rona in *...Spelling Bee* at Emmanuel College (ACTF nomination), Sarah in *Translations* at Emerson College, and Melinda in *Inherit the Wind* at Arlington Friends of the Drama. Thanks to Jane, Laurel, Rob, and the rest of the cast and crew for making this such a wonderful experience!!

Jeffrey Sewell (Milo) is THRILLED to be appearing in his 4th WFT show as a character from one of his favorite books! He has been seen here previously in *ANNIE*, *Peter Pan*, and *Beauty and the Beast*, as well as in the WFT Summer Intensive productions of *Into the Woods Jr.* (Baker) and *Fiddler on the Roof* (Perchick). Other credits include the title role in *Oliver!* at Fiddlehead; *The Secret Garden* (Colin), *Les Misérables* (Gavroche), and *Seussical* (JoJo) at Alexander Children's Theatre; *Mame* (Peter) at the Reagle; and *A Civil War Christmas* (Children's Ensemble) at the Huntington. Jeffrey is perhaps best known for his YouTube video, "So Much Better Legally Blonde Cover," which has had more than 100,000 views. He also performed Lady Gaga's "Born This Way" at Joe's Pub in NYC. Thanks to Jane, Charles, Sue, Beth, and the whole WFT family for giving him the exhilarating opportunity to return to his favorite family, the Wheelock Family Theatre. :)

Lisa Simpson (Costume Designer) started at WFT in 2004 as costume coordinator, became the Theatre's costumer in 2006, and designed the costumes for WFT's *ANNIE*, *A Tale of Two Cities*, *Charlie and the Chocolate Factory*, *To Kill a Mockingbird*, and *Charlotte's Web*. Her first foray into sewing and creating costumes was at age 6, when she removed and cut up her new bedroom curtains, much to her mother's dismay. Lisa has created original costumes for the Gold Dust Orphans for many years. Her work can also be seen onstage with the band Phish - she recently designed two new dresses for drummer Jon Fishman.

Kami Rushell Smith (Princess of Rhyme) is excited to return to WFT after appearing as Princess Mariana in *The Little Mermaid*. Other local credits include *Big River* at the Lyric; *Nine* at SpeakEasy; *Harriet Jacobs* with Underground Railway (IRNE nomination for Best Actress); *Hairspray* at the Reagle; *Passing Strange*, *Darling Divas Deck the Holidays*, and *Dessa Rose* at New Rep; *Much Ado About Nothing* with Actors' Shakespeare; *Macbeth* with Shakespeare Now!; and *The Life* at Boston Conservatory. Kami has a BA in English from Carnegie Mellon and a Master's in Musical Theatre from Boston Conservatory. Just happy to be here. www.KamiRushellSmith.com.

Marlon Smith-Jones (Demon, Ensemble) is happy to return to WFT, where he was last seen in *Seussical*. Recent credits include Ensemble in *Big River* (the Lyric), Coalhouse Walker, Jr. in *Ragtime* (Emerson Umbrella), and André in *Ain't Misbehavin'* (New Rep Black Box). This summer Marlon went to NH to lend his voice as a principal singer for the original cast album of a new musical, *Be Mine*, with WFT favorites Merle Perkins and Andrew Barbato. During the day he works as an educator/performer with Urban Improv; he also serves as director/vocal coach for the Lexington Youth Stage. In addition to singing, acting, and dancing, Marlon is a classically trained cellist who obtained his BFA in Musical Theatre from the University of Michigan. Thanks to Jane for this opportunity. Peace and God's blessings to all!

(continued on page 17)



GEORGE W. BLAISDELL
INSURANCE BROKER

The Governor's Mansion
P.O. Box 644 Hampton Falls, NH 03844

TOLL FREE 800-882-8535

NE MOVES
Mortgage, LLC



Whatever your residential financing needs, we will tailor a loan that's right for you:

- Purchase
- Refinance
- FHA, VA & State Housing
- First-Time Home Buyer
- Special Relocation Programs
- Conforming & Jumbo Loans
- Adjustable & Fixed Rate
- Low Down Payment Loans
- Purchase & Rehab Mortgages
- Free Pre-Approvals

KEVIN GREELEY

NEMoves Mortgage Consultant

171 Huron Ave., Cambridge, MA 02138

Work: 617-864-8566 Cell: 781-929-4147

Email: Kevin.Greeley@NEMoves.com

NMLS #2584

The Phantom Tollbooth

based on the book by Norton Juster

BOOK Norton Juster & Sheldon Harnick	MUSIC Arnold Black	LYRICS Sheldon Harnick
MUSICAL DIRECTOR Robert L. Rucinski	DIRECTOR Jane Staab	CHOREOGRAPHER Laurel Conrad
COSTUME DESIGNER Lisa Simpson	SET DESIGNER Matthew T. Lazure	LIGHTING DESIGNER Franklin Meissner, Jr.
SOUND DESIGNER Roger J. Moore	PROPS DESIGNER Marjorie Lusignan	PRODUCTION STAGE MANAGER Lindsay D. Garofalo*
AUDIO DESCRIBER Valerie C.M. Ching	ASL INTERPRETERS Lucy Annett, Michael Sullivan, & Desiree Weems	

THE CAST

Milo	Jeffrey Sewell
Tock	Michael Wood*
King Azaz	De'Lon Grant*
Mathemagician	Brian Richard Robinson*
Demon of Insincerity	Aimee K. Doherty*
Terrible Trivium/Midget-Giant	Robert Saoud*
The Senses Taker/Spelling Bee/Cook	Jenna Lea Scott*
Princess of Rhyme	Kami Rushell Smith*
Princess of Reason	Courtney Sullivan
The Humbug	Mansür*
King's Advisor/Dr. Dischord	Wayne Fritsche
King's Advisor	Shonna McEachern
King's Advisor/ Whetherman	Andrew Oberstein
King's Advisor/Cook	Ilyse Robbins*
Narrator/Dodecahedron/Cook	Ceit Zweil

ENSEMBLE: Ryan Cook, Trey Gaskin, Taylor James, Emma Joanis, Emma Rosz Kelley, Joseph Nedder, Whitney Sandford, Abigail Seidel, Marlon Smith-Jones, Carol Grossi Smolinsky, Abby Spare, Cyrus Veyssi

THE PHANTOM TOLLBOOTH is presented through special arrangement with Music Theatre International (MTI). All authorized performance materials are also supplied by MTI. 421 West 54th Street, NY, NY 10019. 212.541.4684. www.mtishows.com

The play is in two acts. There will be one intermission between the acts.

Ask the House Manager for individual sound enhancement devices.

The taking of photographs and use of recording devices is strictly forbidden.

Please turn off all electronic devices. Please, no eating or drinking in the theatre.

Open captioning provided in collaboration with c2 (caption coalition) inc, www.c2net.org.

Wheelock Family Theatre is a member of ArtsBoston; StageSource, the Alliance of Theatre Artists and Producers; the Theatre Artists' Marketing Alliance (TAMA); and the Consortium of Boston Area Children's Theatres (CBACT).



*Member of Actors' Equity Association, the Union of Professional Actors and Stage Managers in the United States. The Wheelock Family Theatre is operating under the terms of a Developing Theatre's Program of Actors' Equity Association. The contract used is a Letter of Agreement.



MUSICAL PROGRAM

ACT ONE

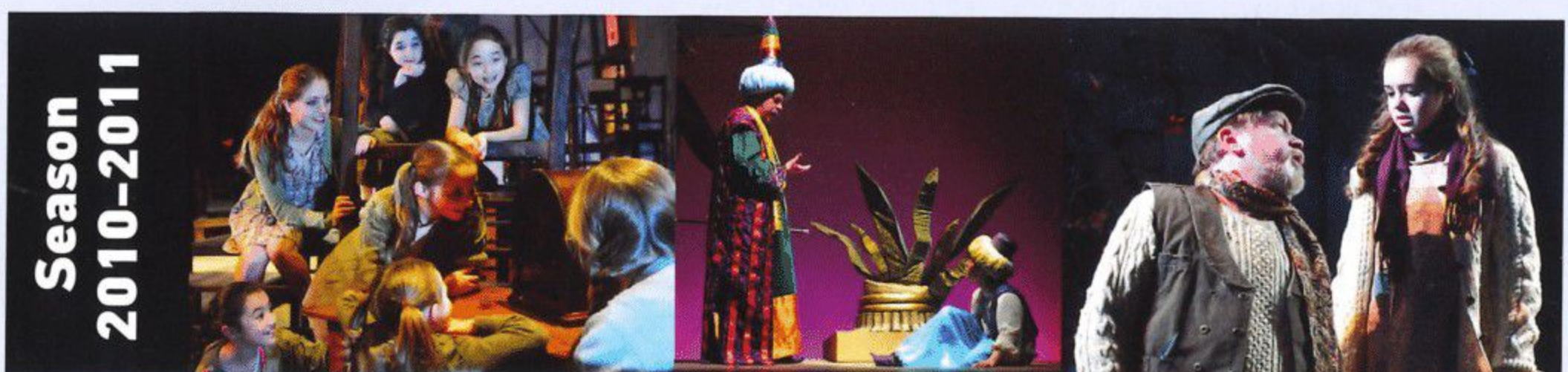
Another Boring Afternoon.....	Milo
Gotcha.....	Demons
The Birth of the Booth.....	Voice of Tollbooth
The Whether Man.....	Whether Man
The Lethargarian Shuffle.....	Lethargarians
Tock's Narrative.....	Tock, Princes, King Azaz, Mathemagician, Princesses
At the Market.....	Citizens
The Spelling Bee.....	Spelling Bee
Azaz' Warning.....	King Azaz
Do I Dare.....	Milo, Tock, King Azaz
Good Fortune to Milo and Tock.....	Citizens

ACT TWO

Gotcha (Reprise).....	Demons
Giant/Midget.....	Giant/Midget
Hail, Digitopolis.....	Miners, Dodecahedron
Subtraction Stew.....	Mathemagician, Milo, Tock, Cooks
Gotcha (Reprise).....	Demons
Milo.....	Princess of Rhyme, Princess of Reason
Finale.....	The Company

ORCHESTRA

Keyboard/Conductor: Robert L. Rucinski
 Flute: Heather Katz-Cote Oboe: Elizabeth England
 Clarinet: Louis Toth Bassoon: Terry Myers
 Horn: Meredith Gangler Percussion: Dana Cyr



Season
2010-2011

Equity actors pictured: Andrew Barbato, Larry Coen, Katherine Leigh Doherty, Neil Gustafson

International.
Individual.
Inspirational.

British School of Boston

Academically rigorous and internationally focused, featuring the International Baccalaureate Diploma. Serving students in Nursery through High School.

Open Houses:	Friday, November 11	9:30-11:00 a.m.
	Sunday, December 4	1:00-3:00 p.m.
	Wednesday, January 25	9:30-11:00 a.m.

FREE STORY TIME PROGRAMS FOR 2 AND 3 YEAR OLDS.

617.522.2261 • www.britishschoolofboston.org

Who says
cleaning house
isn't FUN?

baystateparent

winner of 30 awards in 2010

INCLUDING BEST PARENTING PUBLICATION IN NORTH AMERICA

"baystateparent covers all the bases for parents in Massachusetts. Eye-catching covers... a great reference with a full calendar. Excellent ad layout and design. Great use of 4-color in ads and content. Appears to be a strong revenue producer."

- New England Newspaper & Press Association

PICK UP YOUR FREE COPY TODAY

**FOR ADVERTISING INFORMATION, CONTACT 508-865-7070
WWW.BAYSTATEPARENT.COM**



Wheelock Family Theatre Advisory Board

Carola Cadley

Vice President, Corporate Development and Marketing, Children's Hospital Trust, Boston

Carole Charnow

President and Chief Executive Officer, Boston Children's Museum

Eleanor Chin

Principal, Clarity Partners Coaching and Consulting, Jamaica Plain

Edward F. Coakley

President (retired), E.F. Coakley and Associates, Boston

John (Jeff) Coburn, Co-Chair

Managing Director, Coburn Consulting, Boston

Ceronne B. Daly

Director, Office of Pre-Collegiate and College Access Programs, Wheelock College, Boston

Mindy d'Arbeloff

Marketing, communications, and development consultant, Milton

Rosario A. Dominguez

Vice President of Programs, Community Servings, Boston

Scott Edmiston

Director, Office of the Arts, Brandeis University, Waltham

Ed Feather

Senior Brand Director, PARTNERS+simons, Boston

Andrea (Andi) Genser

Executive Director, WE CAN Corporation, Harwich Port

Nancy Gertner

Professor of Practice, Harvard Law School, Cambridge

Lillian Gonzalez

Principal, Gonzalez & Associates P.C., Stoughton

Alicia Gordon

Partner, Gordon Lower Public Relations, Boston

Charles (Chuck) B. Gordon

Senior Vice President and Chief Development Officer, City Year, Inc., Boston

Elvernoy (Albie) Johnson

State Librarian, State Library of Massachusetts

Steven M. Key, Esq.

Attorney, Law Office of Steven M. Key, Jamaica Plain

Robin Mount, Co-Chair

Director, Office of Career Services, Harvard University, Cambridge

Meegan Turet

Fine Arts Chair, Academy of the Pacific Rim Charter Public School, Hyde Park

SPECIAL THANKS

Jacqui Alexander; Amy Branger; Jim Carr; Shawn P. Cotter; Andrea Fein; The Huntington Theatre Company; Susan Mackey, Mike Fesko, Frank Romero, and members of the Wheelock College Facilities staff; Tony Mosley and the staff of the Service Center; Donna Reulbach; Stella and Jenny Shandelman; Nancy Viall Shoemaker; Ann Sorvari for the study guide; Pier and Wayne Talbot; Sharon Thomas; Liz Williams; and the Office of the President and members of the Wheelock College community who have made this production possible.

Wheelock Family Theatre

STAFF

Producer	Susan Kosoff
Casting Director/Business Manager	Jane Staab
Director of Education	John Bay
Publicity and Marketing Director	Charles G. Baldwin
Assistant to the Producer/Grantswriter	Kay Arden Elliott
Development Consultant	Janet Bailey
Assistant Director of Education	Lisa Rowe-Beddoe
Audience Engagement Coordinator	Marianne Adams
Box Office Supervisor	Stephen Reinstein
Technical Director	Matthew T. Lazure
Production Manager	Brian Masters

PRODUCTION TEAM

Assistant to the Director	Beth Peters
Technical Assistants	Marjorie Lusignan, Tony Paradiso, Eric Rudisaile
Costumer	Lisa Simpson
Assistant to the Costumer	Jennie Hudson-Bryant
Stitchers	Mina Ha, Teresa Kelley, Alessandra Mondolfi, Gamalia Pharms, Pier Talbo
Hair and Make-up	Rachel Sumal
ASL Consultant	Kristin Johnson
Captioning	Jamie Aznive, Ruth Kahn
Master Electrician	Andrew Andrews
Scenic Carpenters	M. Doughty, Alessandra Mondolfi, Mac Young
Scenic Painter	Brandi Napier

EDUCATION PROGRAM FACULTY

Kortney Adams, Esme Allen, Melissa Baroni, Dana Jay Bein, Christy Betit, Danny Bolton, Jennifer Buller, Robin Connors, Laura DeGiacomo, Andrea Doane, Donna Folan, Ellie Friedland, Lorraine Gilman, Jeri Hammond, Angela Harvey, Hannah Husband, Angie Jepson, Kristin Johnson, Marjorie Lusignan, Brian Masters, Grace Napier, John O'Neil, Megan Otteson, Beth Peters, Sophie Rich, Ilyse Robbins, M. Lynda Robinson, Adam Sanders, P.J. Sullivan, Fran Weinberg, Alan White

CREWS

Ashley Abraham, Soriah Barrett, Sonia Belkin, Lauren Bird, Mia Cianciarulo, Sindel Desanges, Eva Dumont, Jacky Elias, Orbelina Erazo, Kayla Howell, Megan Hughes, Regina Levkovich, Robin Liberty, Victoria Lorusso, Kaitlin Mahon, Sharrone Marcano, Meghan McWeeney, Stacy Moynahan, Megan Murphy, Ali Pimentel, Jennifer Provoost, Jessica Romero, Frank Romero, Alicia Selman, Hannah Smith, Lindsey Snyder, Rachel Sumal

WORK/STUDY STUDENTS AND INTERNS

Ashley Abraham, Sonia Belkin, Marvin Brow, Nick Carter, Mia Cianciarulo, Katelyn Coty, Sindel Desanges, Kalila Dolen-McCarthy, Jacky Elias, Brooke English, Orbelina Erazo, Eve Evens, Fantasia Fernandes, Yolanda James, Rachel Leblanc, Colin Lee, Christina Lelon, Regina Levkovich, Caroline Listernick, Kaitlin Mahon, Sharonne Marcano, Elizabeth Meisten, Emily Nadel, Ixcia Nelson, Tori O'Connor, Ali Pimentel, Alicia Selman, Coretta Simmons, Meghan Stafford, Rachel Sumal, Catherine Torres, Doris Vincent, Yaara Yacoby

We wish to thank all the people who have joined with us since the program went to press.

WHEELOCK FAMILY THEATRE CONTACTS

Tickets and Subscriptions:	617.879.2300	tickets@wheelock.edu
Classes:	617.879.2252	jbay@wheelock.edu
Auditions:	617.879.2235	jstaab@wheelock.edu
Donations:	617.879.2252	kelliott@wheelock.edu
Volunteer Opportunities:	617.879.2147	cbaldwin@wheelock.edu

Mail:

200 The Riverway
Boston, MA
02215-4176

Web:

www.wheelockfamilytheatre.org

The Fourth Decade

Since 1981 Wheelock Family Theatre has been bringing high-quality professional theatre performances and educational programs to children and families from communities throughout the Boston area. Now, as we begin our fourth decade, we are inviting our patrons to contribute



to our long-term sustainability by making a commitment to support WFT with a contribution in each of the next three years. Funds will be used to invest in the people and infrastructure we need to provide more and even better experiences for children and families in the future.

More than 40 generous patrons have already demonstrated their dedication to professional, affordable family theatre with three-year commitments of support. Will you join them? Please contact Kay Elliott at 617.879.2252 for more information.

The Fourth Decade Supporters

Anonymous
 Judy and Bob Anderson
 Janet Bailey
 Danny Bolton
 The Brakeman Family
 Carola Cadley
 Catherine and Jeff Coburn
 Lauren and George Doherty
 The Eldridge-Ingram Family
 Kay Arden Elliott
 Priscilla Fales
 Andrea Genser
 Erin Gilligan and Hoil Kim
 Gonzalez & Associates, P.C.
 The Hedequist Family
 Pat Jehlen
 The Kaim Family
 Susan Kosoff

Melissa and Alan Miller
 Robin Mount
 The Mussafer Family
 Grace Napier and William Monnen
 Greg Nash
 Anne H. and John W. Newton
 The Niziak Family
 Lisa Johnson Ogrinc
 Suzanne Olbricht
 Mary ElizaBeth Peters
 Alfreda Piecuch
 Sharon L. Rich and Nancy E. Reed
 Brooke and Neal Sandford
 Elizabeth and Chip Sheeran
 Jane Staab
 Hope Haslam Straughan
 Lee and Steve Whitfield
 Martha and Jeff Winokur

Wheelock Family Theatre Supporters

We are proud of our commitment to keep the quality of our productions high and our ticket and tuition prices affordable. But we can't do that without the support of those generous institutions and individuals who value our work and understand the contribution we make to the community. Ticket income covers only about two-thirds of our costs—won't you help us cover the other third? To make a donation, visit www.wheelockfamilytheatre.org or contact Kay Elliott at 617.879.2252.

Institutional Supporters

Actors' Equity Foundation
Bank of America
Boston Parents Paper
Google
Massachusetts Cultural Council
MathWorks
PARTNERS+simons
Peabody Foundation
Carl and Ruth Shapiro Family Foundation
Wheelock College
Yawkey Foundation

Individual Donors

Angels (\$1,000 and up)

Mr. and Mrs. Robert G. Anderson
Atlantic Philanthropies
Director/Employee Designated Gift Fund
Linda Cabot Black Foundation
The Brakeman Family
Carola Cadley
Catherine and Jeff Coburn
Daughters Fund, a Donor Advised Fund
of Combined Jewish Philanthropies,
at the recommendation of Sharon L. Rich
and Nancy E. Reed
Lauren and George Doherty
Sally Reeves Edmonds
Ellie Friedland
Erin Gilligan and Hoil Kim
Gonzalez & Associates, P.C.
Alicia Gordon
The Hedequist Family
Ann-Penn Holton
Susan Kosoff
Carol and Gordon Marshall
Melissa and Alan Miller
Robin Mount
The Mussafer Family
Greg Nash
Suzanne R. Newton
Suzanne Olbricht
Peninsula Charities Foundation II
Brooke and Neal Sandford
Jane Staab

Leading Players (\$500-\$999)

Anonymous (2)
The Abbrecht Family
Janet Bailey
Charles G. Baldwin
Linda Bosse and David Seeley
Kimberly F. Boucher
The Frances Coni Family
Sarah and Richard deLima
Bob Doane
Kay Arden Elliott
Priscilla Fales
Hilary Gabrieli
Andrea Genser
Susan Gochenour and Steven Rosen
Leslie E. and Charles B. Gordon
Stephanie and Kevin Hawkinson

The Joanis Family
The Kaim Family
The Lando Family
Matthew T. Lazure
Nicky and Paige L'Hommedieu
Brian Masters
Lisa McElaney and Abe Morell
The Niziak Family
Carol A. Olmstead
Elizabeth and Chip Sheeran

Supporting Players (\$100-\$499)

Anonymous (3)
Sella and Varujan Abalian
Detris and Olivia Adelabu
Amy Almeida
Josh Alwitt
Ann-Josephine and Matthew Auguste
Lucy Ayanian
Marjorie, Martha, and Maggie Bakken
Sanjay Banker and Sejal Patel
Anamaria and James Barron
Ann Barlow
John Bay
Diane and Michael Baxter
Judy and Ken Berk
Margaret Bergstrand
Alan and Debbie Bieri
Ann Bitetti and Doug Lober
Danny Bolton
Debra Borkovitz
Cheryl and Leonard Brown
Leann Canty
Elizabeth Cerasuolo
Richard Charlton
Marla Choslovsky and Paul Greenberg
Keena Clifford
Ellen Colton
Sheila Cook
Robert Crabtree
Tina and Harvey Crosby
Stephanie D'Alessandro
Mindy d'Arbeloff
John Davin
Susan DeColaines and Bill Swanson
Andrea E. Doane
Catherine Donahue
Zelinda and John Douhan
The Duvall Family
The Eldridge-Ingram Family
Bess Emanuel and John Vyhnanek
John Englert
Barbara Elliott Fargo
Dawn and John Fattore
Bobbi Fox
Shirley Stevens French
Betty and Larry Fuchs
Eileen and John Gallagher
Mr. and Mrs. Adolfo Garcia
Kate Gilbane
Margaret and Fred Gilligan
Dot Gorenflo
Shelly Greenfield and Allan Brandt
Lily Halpern
Keith F. Harris

The Hermanson Family
Andrea C. Hoffman
Maya Honda and Wayne O'Neil
Lawrence A. Horlick
Jacqueline Jacobs
Drs. Paula Johnson and Robert Sands
Jeanne and Norton Juster
Anne Harvey Kilburn
Alexa and Ranch Kimball
Sally Kindleberger
Judy and John Knutson
Danny LaChance
Diane Levin and Gary Goldstein
Blair MacInnes
Ulla and Willem Malkus
Allan and Anne Marie Martorana
Mary and Mike McConnell
John McCormack
Donna and Thomas McKibbens
Elizabeth Moriarty
Grace Napier and William Monnen
Antonia and Joseph Nedder
Shelly Nemirovsky
Lisa Johnson Ogrinc
Elaine and Joe Paster
Charlotte and Ed Peed
Mary ElizaBeth Peters
Deb Poppel
Pyne Arts Magnet School,
in memory of Betty Taylor Rose
Kimberly Raynor
Marchelle and James Raynor
Deborah Samuels-Peretz
Johanna Schneider
Herman Scott
Kathleen O'Neill Seidel
Barbara B. Slater
Ruthann Sneider
Judy Spiridigliozzi
Mr. and Mrs. George R. Sprague
Martha E. Stone
Jessica Walling Stokes,
in honor of Jane Staab
Becky Thompson
Joan I. Thorndike
Thu-Hang Tran and Mark S. Day
Louise and Edward Tsoi
Judy Ulman, in memory of Ruthe Paige
Shifteh Veyssi
Barry, Wendy, and Sarah Wanger
Joan Watts
Karen Watson
Susan Weir
Jack Welch
Claire White
Martha and Jeff Winokur
Julie Wollman
Karen Worth

We are grateful to all our generous donors, including 111 contributors of amounts below \$100.

This list reflects gifts and pledges made between 7/1/10 and 10/5/11.

(continued from page 9)

Carol Grossi Smolinsky (*DeciBelle*) is thrilled to be in her first show with WFT! She holds a BA in Theatre from UMass Amherst and is currently performing with several audience-interactive and educational shows in the Boston area. Youth theatre holds a special place in her heart, as her first experience in the professional theatre world was in 1996 as a member of the Children's Choir during the Boston leg of the tour of *Joseph...Dreamcoat*. Carol is an assistant teaching artist for Citi Performing Arts Center's Education Department. Also, and perhaps most importantly—Hi, Mom!

Abby Spare (*Teen, Noun*) appeared as Tessie in the national tour of *ANNIE*, directed by Martin Charnin. Her NYC theatre credits include *Anna the Storyteller*, an AEA staged reading (*Cossetta*) and *Erasing the Brain* (Ellen). She has been seen regionally in *Eurydice* (Loud Stone), *A Christmas Carol* (Fan and Martha), *Charlotte's Web*, and *A Civil War Christmas*. Also a tap, hip hop, contemporary, pointe, and ballet dancer, Abby was recognized as the 2011 National Champion (Tap) at the Spirit of Dance Awards.

Jane Staab (*Director*) is a WFT founder and the Theatre's resident actor and casting director. Recent productions she has directed include *ANNIE*, *HONK!*, *Charlotte's Web*, *Peter Pan*, *Beauty and the Beast*, and *The Sound of Music*. Her most recent roles include Great Mother in *The Little Mermaid*, Madame Defarge in *A Tale of Two Cities*, the Grinch and Yertl in *Seussical*, and Mrs. DuBose in *To Kill a Mockingbird*. Jane would like to thank the splendid cast, as well as the amazing designers, choreographer, musical director, musicians, and crew for a "fine, fantastic" show. She would also like to thank the dedicated staff and many friends of the Theatre who help make WFT such a special place. She only wishes she'd had a theatre like this one when she was growing up.

Courtney Sullivan (*Princess of Reason*) is a junior at Wheelock College, where she studies Developmental Psychology and Performing Arts. Some of her previous performances include Ensemble in WFT's *ANNIE*, Rosie in *Bye Bye Birdie*, Rapunzel in *Into the Woods*, Norah in *Brighton Beach Memoirs*, Sophia Western in *The Adventures of Tom Jones*, and Lady Larkin in *Once Upon a Mattress*.

Michael Sullivan (*ASL Interpreter*) is a Boston-based interpreter working primarily in medical settings. Credits include *As You Like It* (Commonwealth Shakespeare) on the Boston Common, Irving Berlin's *White Christmas* (Citi Center), and *Topdog/Underdog* by Suzan Lori-Parks (Trinity Rep and New Rep). He began his theatre interpreting career with *The Phantom Tollbooth* at WFT in 2003, when he worked with Lucy Annett for the first time. Since then he has returned to interpret *The Lord of the Flies* and *Beanstalk*. Michael is enthused to be coming back with Lucy, his partner in interpreting and in life. Love to her and to Cora, and thanks to Wheelock and the whole ASL team.

Cyrus Veyssi (*Young Prince, Demon*) has been singing and acting ever since he was little, performing at school and in multiple local theatres. His favorite show (outside of ones he's done at WFT) was *Metamorphosis*, adapted by Mary Zimmerman, in which he played King Ceyx. WFT credits include *Aladdin* and the Teen Summer Intensive. Cyrus also loves skiing, playing squash, and jogging. He plans on studying in NY after he graduates from high school; his dream is to either be on *Glee* or perform in a Broadway or Off-Broadway show. He lives in Brookline with his mom, dad, and brother Kaveh.

(continued on page 18)

Making Theatre Accessible to All

Wheelock Family Theatre is committed to ensuring that the theatre experience is available to all families regardless of their economic circumstances. To this end, we provide free or deeply discounted tickets through the following organizations:

- | | | |
|---|---|---|
| ABCD East Boston Head Start | Colonel Daniel Marr Boys and Girls Club | Italian Home for Children |
| ABCD Geneva Avenue Head Start | Cotting School | Jewish Big Brother/Big Sister |
| ABCD - Manpower, Headstart, Family and Community Services | Crispus Attucks Children's Center | John Winthrop School |
| ABCD Mattapan Headstart | Dana Farber Cancer Institute | Judge Rotenberg Center |
| Acushnet Council on Aging | Department of Social Services | Jumpstart Programs - Wheelock College |
| Agassiz Neighborhood Council | Dimock Community Health Center | Lexington Montessori School |
| AIDS Action Committee | Dorchester Home-Schoolers | Massachusetts Hospital School |
| American School for the Deaf | Dorchester House Multi-Service Center | Mission Hill Community Center |
| Asian Task Force | Dorchester House Preschool/Day Care | Mission Safe |
| BASE - Braintree After School Enrichment | Dorchester YMCA After School | New England Village |
| Best Buddies | Early Learning Center/East | Noah's Ark Nursery School |
| Big Brother Big Sister Foundation of Boston | East Boston Early Education Center | OSHER Life Long Learning Institute at UMass |
| Big Brothers & Big Sisters Associates, Lawrence | East Boston High School | Partners for Youth with Disabilities |
| Boston Children's Chorus | East Boston Social Center | Plowshares |
| Boston Families for Autism | East End House | Rosie's Place |
| Boston Health Care for the Homeless | EDCO Program for the Deaf | Roxbury Presbyterian Church |
| Boston's Hope | Egleston YMCA | Roxbury Tenants of Harvard |
| Boys Club of Watertown | Floating Hospital Children's Center | SCAMPS Childcare Program |
| Bright Horizons | Freedom House | SCAMPS Gates Intermediate School |
| Brooks School | Germantown Neighborhood Center | Shattuck Childcare Center |
| Cambridgeport School | Girls Inc. | Soule Early Childhood Center |
| Canton High School | Hattie B. Cooper Community Center | South Boston Boys & Girls Club |
| Charlestown Boys & Girls Club | Haverhill Youth Center | Spaulding Child Care Center |
| Chelsea YMCA | Hawthorne Youth & Community Center. | TILL, Inc. |
| Children's Hospital | Hernandez School La Piñata | Trips 'R Us |
| Codman Academy Charter School | Home for Little Wanderers | Upward Bound - Wheelock College |
| | Housing Families Inc. | Volunteers of America JP DSS |
| | | YMCA West Roxbury |

15% Off photo products

**Order in-store or online!
at WABANPHOTO.COM**



PHOTO PRODUCTS:

- QUALITY PRINTING
- CALENDARS, CARDS
- BOOKS, SCANNING
- RESTORATIONS

(617) 964-2161

WabanPhoto

at Frame It / Waban Gallery

1645 Beacon Street. Newton, MA 02468

www.frameitwaban.com

For online orders use code "15 off" at check out.
Must present card for in-store savings. Cannot be
combined with other offers. Expires 9/1/2012

(continued from page 17)

Michael Wood (Tock) previously played the Crocodile in WFT's production of *Peter Pan* and is beyond giddy to be back, newly promoted to playing a dog! A native Mainer, he studied French, English, and theatre at Bowdoin, followed by mime and movement theatre at École Jacques Lecoq in Paris. Other Boston credits include Young Teddy in *Follies* at the Lyric and Jesus in *All About Christmas Eve*, Pickles in *Phantom of the Oprah*, and the titular role in *Peter Pansy*, all with the Gold Dust Orphans. Regionally, he has played in FL, AZ, and PA with the Prather Entertainment Group in the ensembles of *ANNIE* and *Chicago*; Aladdin in *Aladdin Jr.*; Cat in the Hat in *Seussical*; and Jerry/Daphne in *Sugar*. Michael heartily thanks Jane Staab and the entire WFT family for all the love and support. He dedicates his performance to his dearly departed dogs Sadie and Brindle for teaching him how to be a loving, caring canine.

Ceit Zweil (Narrator, Dodecahedron, Cook) is excited to be returning to WFT, where she was last seen in *ANNIE* (Sophie/Ronnie Boylan). Recent credits include Anytime Annie in *42nd Street* and Mamma Lucrezia/Mrs. Gapp in *The Dinosaur Musical* (Stoneham) and concert singer in NE Light Opera's *Heart and Soul: The Songs of Frank Loesser* (also director-choreographer). Favorite roles include Michelle in *The Sparrow*, Gladys Bumps in *Pal Joey*, Laney in the NE premiere of *The Girl in the Frame* (all at Stoneham), as well as Dockdaisy in *The Resistible Rise of Arturo Ui* and Liliane LaFleur in *Nine*. Ceit's voice can be heard in various WGBH/PBS promos; she served for 7 years as a multi-media producer of national online kids' content for WGBH. Choreography credits include *Happy Days Are Here Again* (NELO) and the original choreography for *The Paisley Sisters Christmas Special* (ICA and Worcester Foothills). She received her BA in History from Smith and her MA in Theatre Education from Emerson.

On Sale Now



All Tickets \$15

Starts Dec. 10

Magic, storytelling, & family fun.
Experience the holidays at the A.R.T.

The Snow Queen

World Premiere Adaptation

by Hans Christian Andersen
Directed by Allegra Libonati
Adapted by Tyler Monroe
Puppets by Michael Kane

EXPERIENCE THE
art.

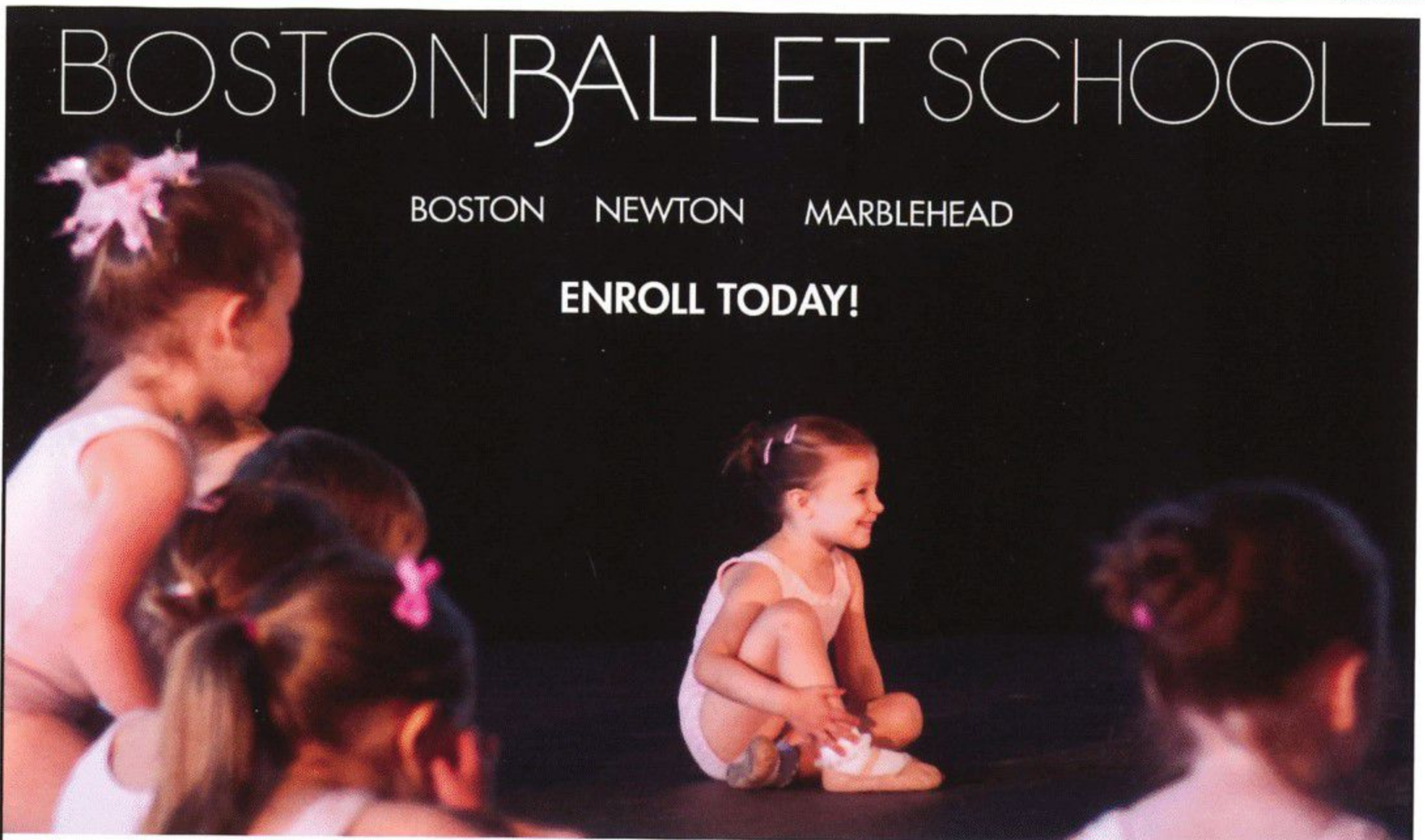
CALL: 617.547.8300

VISIT: americanrepertorytheater.org

BOSTONBALLET SCHOOL

BOSTON NEWTON MARBLEHEAD

ENROLL TODAY!



Experience the difference at Boston Ballet School: expert faculty, live music, a comprehensive curriculum, explore ballet and the wider world of dance in our beautiful state-of-the-art facilities.

Ages 2-Adult • Beginners Welcome • 617.456.6333

www.bostonballet.org/school

Official School of
BOSTONBALLET

Photo by Liza Voll

BostonParents PAPER

Wishing Wheelock Family Theatre another successful year!
Pick up a Boston Parents Paper monthly or visit us online at
www.bostonparentspaper.com



ENJOY THE SHOW!



We're proud to support the voices of our community.

When community members speak about supporting the arts, we respond to their call for making the possible actual. Valuing artistic diversity within our neighborhoods helps to unite communities, creating shared experiences and inspiring excellence.

Bank of America is proud to support Wheelock Family Theatre for its leadership in creating a successful forum for artistic expression.

Visit us at bankofamerica.com

Bank of America 