



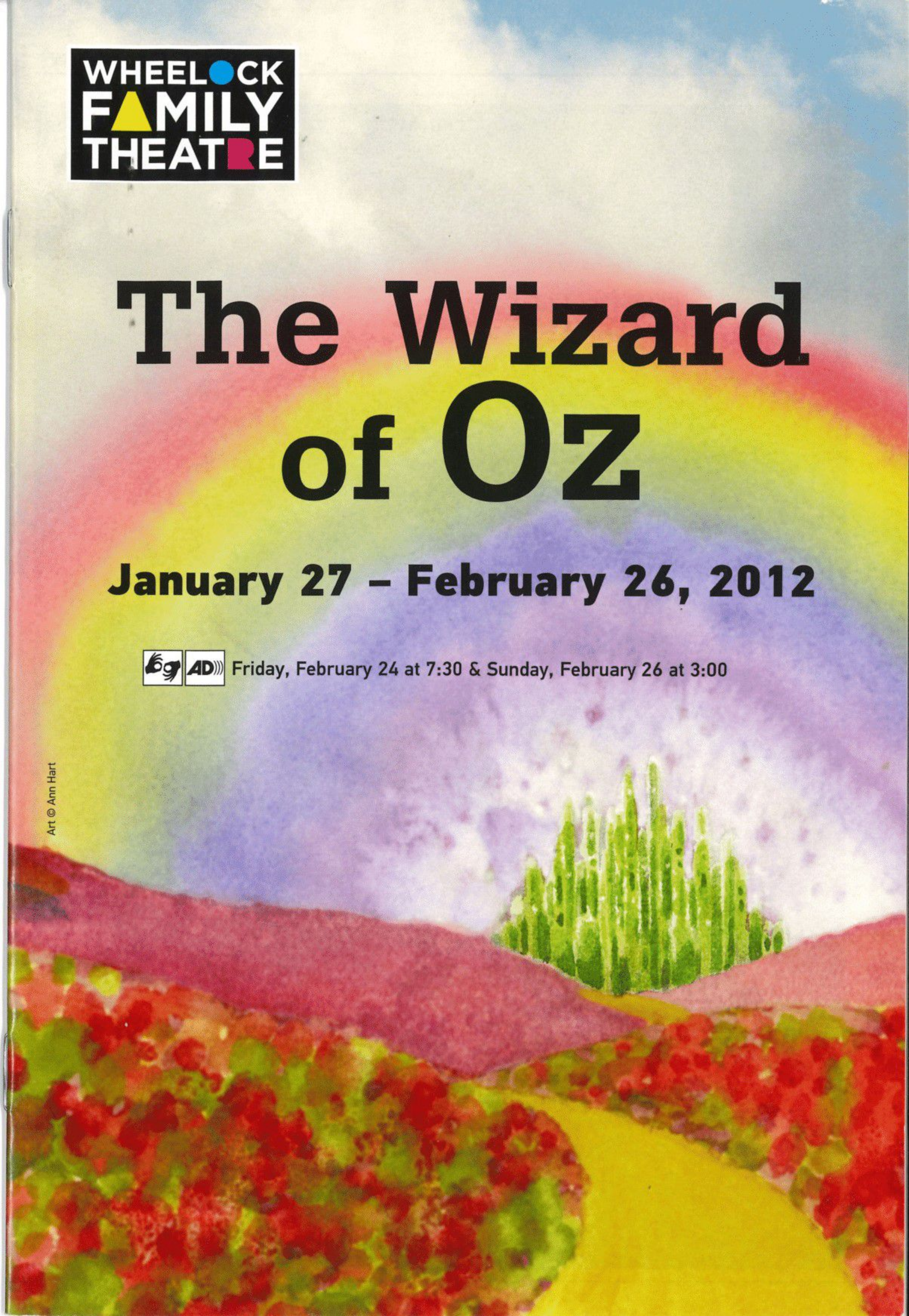
# The Wizard of Oz

**January 27 – February 26, 2012**

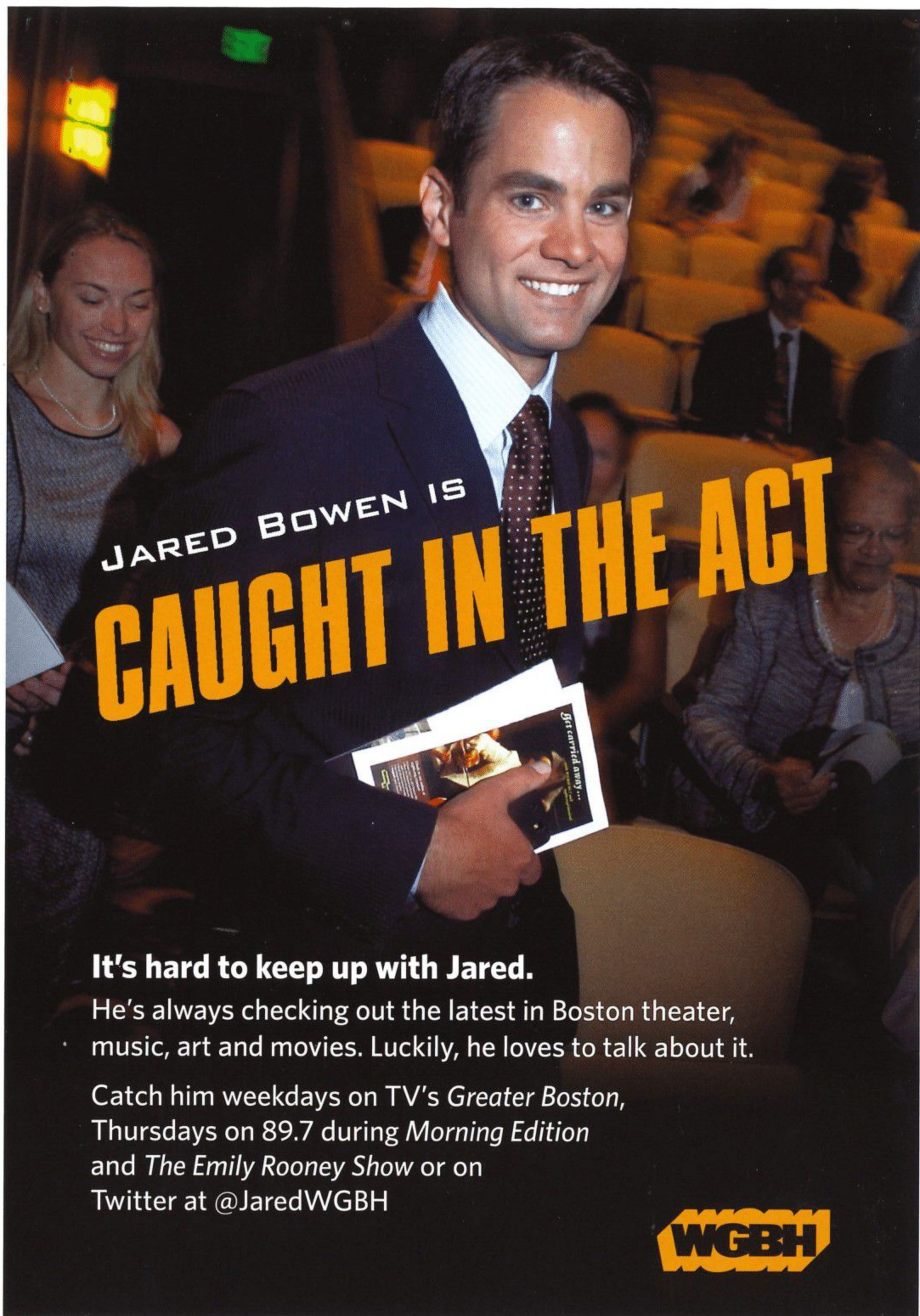


Friday, February 24 at 7:30 & Sunday, February 26 at 3:00

Art © Ann Hart







JARED BOWEN IS  
**CAUGHT IN THE ACT**

**It's hard to keep up with Jared.**

He's always checking out the latest in Boston theater, music, art and movies. Luckily, he loves to talk about it.

Catch him weekdays on TV's *Greater Boston*, Thursdays on 89.7 during *Morning Edition* and *The Emily Rooney Show* or on Twitter at @JaredWGBH

**WGBH**



January/February 2012

Dear Theatre-goer,

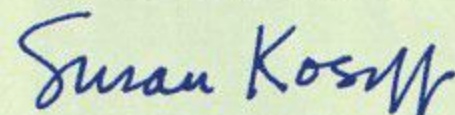
Welcome to *The Wizard of Oz*, our first show of 2012 and WFT's one hundredth main stage production. Varied as they have been, all these plays and musicals have some common and essential ingredients—most significantly, compelling stories and meaningful, often insightful, messages worth sharing.

In *The Wizard of Oz*, L. Frank Baum's beloved and iconic classic, he teaches us a lesson in self-discovery. The rainbow's end turns out to be close at hand, within ourselves, in our backyards; we spend our lives struggling to get to the end of the rainbow, not realizing that whatever we seek is inside of us. Finding the gold inside ourselves remains one of life's greatest challenges.

While Baum intended his stories "solely to pleasure children of today," his work allows us—and the children of the many generations that have followed and those that are yet to come—to marvel at the wonders outside of ourselves and, along with the Cowardly Lion, Scarecrow, Tin Woodsman, and Dorothy, to appreciate the wonders within. After all, home is where the heart is, and there is no place like home.

We hope the messages of this production are ones that will resonate with you long after the house lights go up.

Sincerely yours,



Susan Kosoff, Producer



Boston Trust & Investment  
Management Company



Walden Asset Management  
*Advancing sustainable business practices since 1975*

**Cheers to your 2011-2012 season!**

Boston Trust & Investment Management Company  
One Beacon Street | Boston, Massachusetts 02108 | 617.726.7250 | fax: 617.227.2690



The inspiring story of Helen Keller and her devoted teacher, Annie Sullivan, illustrating our very human need to connect and to communicate.



# The Miracle Worker

By William Gibson

**April 13 – May 13**

recommended for adults and children ages 9 & up

For additional information: 617.879.2300

[tickets@wheelock.edu](mailto:tickets@wheelock.edu)

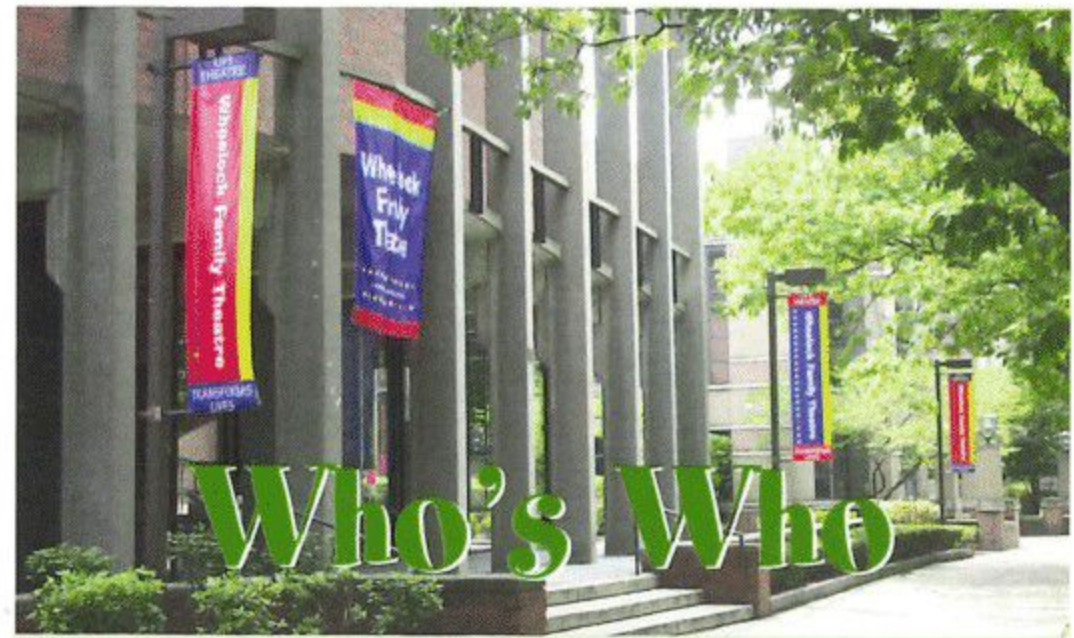
[www.wheelockfamilytheatre.org](http://www.wheelockfamilytheatre.org)



UNDERGRADUATE & GRADUATE  
DEGREES IN EDUCATION, SOCIAL  
WORK, ORGANIZATIONAL  
LEADERSHIP, & LIBERAL ARTS

**WHEELOCK**  
COLLEGE

For more info: [wheelock.edu](http://wheelock.edu)



**Ally Aquilina-Piscitello (*Winkie*)** made her acting debut when she was 6 years old. Since then, she has performed with WFT, the Reagle, Concord Youth Theatre, and Lexington Players, among others. She appeared as an extra in *Knight and Day*, in a photo shoot for the TV pilot of *Body of Proof*, and on *Kickin' Kitchen.tv*. Ally takes private voice lessons at the Real School of Music and has taken numerous drama classes, including several at WFT. She has adored every show she has seen here and is delighted to be in this one—she hopes to be in many more!

**Patrick Barron (*Munchkin Mayor*)** is happy to be back on the WFT stage, where he was last seen in *Aladdin*. Other credits include *The Mikado* and WFT's *ANNIE* and *The Little Mermaid*. Patrick has enjoyed taking Ensemble Skills and Stage Combat classes here at WFT, as well as Improvisation at Boston Casting. He plays the piano, travels extensively, and is a 5th grader at Mount Alvernia Academy.

**Samil Battenfeld (*Munchkin*)** has taken many WFT classes and appeared in *Charlotte's Web* (Baby Spider) and *Aladdin* (Slave of the Lamp), the latter alongside his sisters Priya and Varsha. He loves soccer, drawing, playing the violin, and battling with beyblades (Japanese metal tops).

**Shelley Bolman (*Tinman*)** is thrilled to be returning to WFT. Past credits here include *Saint Joan* (Charles, the Dauphin), *Lilly's Purple Plastic Purse* (Chester), *Holes* (Mr. Pendanski), *Snow White* (The Prince), *Inherit the Wind* (Bertram Cates), *Pippi Longstocking* (Tommy Settergren), and *The Witch of Blackbird Pond* (Nat Eaton). Other local credits include ASP: *A Midsummer Night's Dream* (Lysander); Gloucester Stage: *Woman in Black* (The Actor), *Billy Bishop Goes to War* (Billy Bishop), and *Wind in the Willows* (Mole); Commonwealth Shakespeare: *A Midsummer Night's Dream* (Snug); Stoneham: *And Then There Were None* (Dr. Edward Armstrong) and *A Christmas Story* (Ralph); Boston Theatre Works: 2007 Elliot Norton-Award-winning play *A Midsummer Night's Dream* (Quince, Lysander, Cobweb) and *Antony and Cleopatra* (Maecenas, Messenger); Village Theatre: *Better Off Dead* and *Spinning Into Butter*; and New Rep: *Tartuffe* and *Opus*.

**Georgia Branger-Klein (*Munchkin*)** is a 3rd grader at the Advent School. She is excited to be back at WFT, after appearing here in *The Little Mermaid* and *Aladdin*. She has also done a commercial for Boston Medical Center and several shows at the Charlestown Working Theater, most recently *Twelfth Night*. Georgia dreams of acting on Broadway.

**Camille Eliane Brown (*Munchkin*)** is "over the rainbow" with excitement as she performs in her 4th show at WFT! Previous roles include a Baby Spider in *Charlotte's Web*, a Crab in *The Little Mermaid*, and a Slave of the Lamp in *Aladdin*. Camille is an active Framingham 3rd grader who does tap, jazz, hip-hop, ballet, and gymnastics, plays piano, and is a Brownie. She gives big hugs to Mom, Dad, Ian, and her adorable cats, Petteen and Coral!



**James P. Byrne (Director/Set Designer)** "grew up" at the Harwich Junior Theatre and now produces, teaches, designs, and directs theatre with and for all ages, from Provincetown to Boston, NY to New Orleans to LA. Using drag queens, children, visual artists, and professional actors, Jim has presented works by Shakespeare, L. Frank Baum, Charles Ludlum, Homer, the Dalai Lama, the Hopi, and Ryan Landry and the Gold Dust Orphans. Previous WFT directing credits include *Aladdin*, *The Little Mermaid*, *Lilly's Purple Plastic Purse*, *Winnie-the-Pooh*, *The Phantom Tollbooth*, *The Witch of Blackbird Pond*, *The Tempest*, *The Hobbit*, *Stuart Little*, *Romeo and Juliet*, and *Happy Days*.

**Valerie C. M. Ching (Primary Audio Describer)** is thrilled to be working with creative collaborator Andrea Doane on the description for another Wheelock production! Other WFT description credits include primary description for *The Phantom Tollbooth*, and secondary describer for *The Secret Garden*, *Honk*, *Seussical*, *Beauty and the Beast*, *Lilly's Purple Plastic Purse*, *Tuck Everlasting*, *Inherit the Wind*, and *The Sound of Music*.

**Will Christmann (Munchkin)** appeared here in *HONK!* and *Aladdin*. He has performed with Arlington Children's Theatre and attended Kidstock and WFT's Summer Program. Will plays soccer and the saxophone and is an avid reader.

**Laurel Conrad (Choreographer)** is honored to be returning for her 8th season at WFT—where she has had the fortune to choreograph all of WFT's musicals and, occasionally, to perform. Her work here has earned her two IRNE Awards for Best Choreography for *Seussical* and *Will Rogers Follies*. Love to Jane and Sue to whom she is very grateful for the incredible chance to work with an amazing theatre company and wonderful people, creating a second family for her. Also, much love to Molly, Nyssa, and the love of her life, Mario, for their support and encouragement. xoxo

**Isabelle Cotney (Munchkin)**, a Brookline 6th grader, has appeared in PALS and Freelance Players productions, in the Boston Ballet's *Nutcracker*, and at Tanglewood. She plays the piano and is learning to compose her own work. Isabelle enjoys skiing, swimming, and reading.

**Alexander Cruz (Citizen of Oz, Jitterbug)** is a recent graduate of RI College with a BA in Communications and a minor in Dance. He is thrilled to be working with WFT for the first time. Previous credits include Mark in *A Chorus Line* and a Tribe Member in *HAIR* at New Bedford Festival Theatre, as well as Mr. Mistoffolees in *CATS*. Alex is also a main company member of the Providence Ballet Theatre.

**John Davin (Wizard of Oz)** last appeared at WFT as the Genie in *Aladdin*. He is no stranger to *The Wizard of Oz*, having played one of the Lollipop Kids in the film—he loves being a whiz of a wiz.

**Aria DeMarco (Munchkin)**, a 3rd grader at the Park School, was last seen here as a Crab in *The Little Mermaid*. She is an actress at heart and loves nothing more than being on stage! She also enjoys dancing, singing, reading, swimming, and playing tennis. Aria has taken acting classes at WFT. Special thanks to Ms. Janice Allen from Park and Christine McNally from The Performance Factory for their support.

**Andrea Doane (Secondary Audio Describer)**, a WFT supporter in different roles since its inception (31 years ago!), enjoys returning to be part of the audio-description team each year. Productions she has described at WFT include, among others, *The Secret Garden*, *The Miracle Worker*, *Inherit the Wind*, *Beauty and the Beast*, *To Kill a Mockingbird*, *Seussical*, and *HONK!* Andrea is also a teacher at Devotion School in Brookline and teaches in WFT's Education Program during the summer.

(continued on page 6)

**AMBIENCE** Boston

INTERIOR DESIGN  
FLORAL DESIGN

**E. Ann Whittington**  
Proprietor

P.O. Box 181232  
Boston, Massachusetts 02118  
Tel. (617) 267-3049  
E-mail: annwhittington@comcast.net



**brookline booksmith**  
*an independent bookstore for independent minds*

Monday-Thursday 8:30 AM - 10:00 PM  
Friday 8:30 AM - 11:00 PM  
Saturday 9:00 AM - 11:00 PM  
Sunday 10:00 AM - 8:00 PM


279 Harvard Street . Brookline, MA  
[www.brooklinebooksmith.com](http://www.brooklinebooksmith.com)

*Providing both buyers and sellers with the highest quality professional real estate brokerage services available.*

**Chobee HOY** associates

18 Harvard Street  
Brookline, Massachusetts  
02445

617 739 0067



**ROFFI**  
SALON & DAY SPA

*The curly hair expert in Boston*  
Ouidad Certified

134 Newbury Boston 02116 [michaelroffi.com](http://michaelroffi.com)



WHO's WHO (continued from page 5)

**Katherine Leigh Doherty (Dorothy)**, a senior at Noble & Greenough School, is delighted to return to WFT, where she was last seen as Mary Lennox in *The Secret Garden* and formerly appeared in *Lilly's Purple Plastic Purse* (Lilly), *A Little Princess* (Lottie), and *The Sound of Music* (Gretl). In 7th grade, Katherine originated the role of Jane Banks in the Broadway production of *Mary Poppins* and returned to Broadway in her sophomore year to reprise the role of Fredrika in *A Little Night Music*, alongside Angela Lansbury, Catherine Zeta-Jones, Elaine Stritch, and Bernadette Peters. She has participated in 2 Broadway workshops of new musicals, Andrew Lippa's *A Little Princess* (Lottie) and *Cassandra's Angel* (Cassandra), and was an original cast member of the first national tour to Boston of Irving Berlin's *White Christmas* (Susan Waverly). Other favorite theatre credits include *Spring Awakening* (Wendla), *Avenue Q* (Kate Monster), *Bat Boy the Musical* (Shelley Parker), *ANNIE* (Annie), *Into the Woods* (Little Red), and *Joseph...* (Narrator). This summer she looks forward to her 7th and final session at Stagedoor Manor Performing Arts Camp and returning as a counselor at the Brave-Arts Theatre Camp at Regis College. Katherine sends a special thanks to Jane and Sue for their support and mentorship over the past 8 years.

**Ricardo Engermann (Scarecrow)** is happy to be working with WFT again, where he has performed in several productions, including *The Little Mermaid* (Timothy), *Winnie-the-Pooh* (Rabbit), *The Phantom Tollbooth* (Tock), and *Lilly's Purple Plastic Purse* (Wilson). Other credits include *SpeakEasy's Take Me Out* (Davey Battle) and *Our Lady of 121st St.* (Balthazar). Ricardo has also had the pleasure of appearing in *Hamlet* with Boston Theatre Works (Horatio); Commonwealth Shakespeare's *Much Ado About Nothing* (Borachio); Stoneham's *As Bees in Honey Drown* (Photographer); the Lyric's *Lobby Hero* (William), *Old Settler* (Husband Witherspoon), and *The Liar* (Philiste); and Gloucester Stage's *50 Years of Caddying* (Chip Eastern) and *One Under* (Xavier).

**Lindsay D. Garofalo (Production Stage Manager)** is very excited to be returning to WFT for her 4th season as stage manager. Some of her favorite shows that she has been a part of are *Les Misérables*, *Seussical*, *Hedda Gabler*, *Romeo and Juliet*, *The Sound of Music*, *Noises Off*, *Macbeth*, *HONKI!*, and *Living Out*. A big thank you to her family for always supporting her, and to Dan for always keeping her calm.

**Jon Goldberg (Music Director)** has been musical director for at least 15 WFT productions, beginning with *Cinderella* in 1995. Earlier this season he was musical director for *Big River* (Lyric) and *She Loves Me* (Emerson Stage). Jon has received 4 IRNE Awards for Best Musical Director for his work at the Lyric (*A Little Night Music*, *Man of La Mancha*, *Kiss Me, Kate*, and *Grey Gardens*) and he has been associated with 3 Elliot Norton-Award-winning productions—*Assassins* and *Sunday in the Park with George* (Lyric) and *Pacific Overtures* (NMST). Other recent productions include *Nine* and *Into the Woods* at Emerson; *...Spelling Bee* at the Lyric, and *Allegro* with the Lyric First Stage summer teen program. Jon is on the musical theatre faculty at Emerson College, where this April he will be musical director for *Café Variations*, a new theatre piece with Gershwin music, in collaboration with director Anne Bogart.

**Kaedon Gray (Citizen of Oz, Jitterbug)**, originally from NC, is pleased to make his WFT debut. His last performance was in the art film cum gallery exhibition *I'll Raise You One...* by conceptual artist Zefrey Throwell. Theatrical highlights include *A Chorus Line* (Richie); *Violet* (Flick); *Dearly Departed* (Royce, Joy of Life Singer); *Smokey Joe's Cafe* (Adrian); *Once on this Island* (Armand, Father, Storyteller); and the origination of the role of John "Ramon" Lewis in

*Potter's Field Bed and Breakfast*, which was presented earlier this year at Fringe Fest Boston at the BCA. Along with background film work on 2 major motion pictures and industrial and commercial work, he has recorded for the Boston Red Sox and appears on a track with the Boston String Quartet. Kaedon is also a pop vocalist and lyricist. More information at [soundcloud.com/kaedon-gray](https://soundcloud.com/kaedon-gray).

**Katherine Gustafson (Munchkin)** is thrilled to be returning to the Wheelock stage, having previously appeared as a Slave of the Lamp in *Aladdin*, a Baby Spider in *Charlotte's Web*, and a Crab in *The Little Mermaid*. She loves taking classes at WFT!

**Rowen Halpin (Munchkin)**, last seen here as a Chipmunk in *Winnie-the-Pooh*, has also enjoyed taking WFT classes like Broadway Kids and Puppet Slam. Since 2008, she has been part of Freelance Players, most recently in the title role of Hamletta. Rowen is in an improv troupe at Boston Latin and is interested in cooking and music.

**Anika Hartje (Winkie)** is a 9th grader at the Winsor School. She has taken several classes at WFT and participated in Lyric First Stage for the first time last summer. She has been dancing (ballet, pointe, jazz) for 12 years with Tony Williams Dance Center and has appeared in *The Urban Nutcracker* for 7 seasons. This is her WFT debut—and she hopes to do more plays here in the future!

**Gabriella Huggler (Winkie)** is thrilled to be making her WFT debut! She is an 8th grader at Innovation Academy Charter School in Tyngsboro. Recently she performed in *Big, The Musical* at Turtle Lane. Last summer she played Erzulie in WFT's Advanced Performance Intensive production of *Once on this Island Jr.* She played Mary Lennox, one of her dream roles, in *The Secret Garden* with ACTS and appeared as Cissy in *ANNIE* with the Wellesley Players. Gabi also sings with the Boston Children's Chorus Concert Choir and is a competitive gymnast.

**Hiroshi Irizarry (Munchkin)** has appeared in several WFT shows including *Aladdin*, *Charlotte's Web*, and *Lilly's Purple Plastic Purse*. Tennis is his favorite sport and math is his favorite subject in school.

**Katherine Jimenez (Winkie)** is a freshman at Wheelock College. She has been involved in plays including *Ghosts*; *Lady from the Sea*; *East of the Sun, West of the Moon*; *Proof*; and *The Robber Bridegroom*. She is also a member of the Colleges of the Fenway theater project and the Wheelock Sign Choir. This semester she looks forward to taking a Shakespeare class with Jane Staab.

**Elbert Joseph (Nikko)** made his WFT debut as a Munchkin in *The Wizard of Oz* when he was 13 years old. Recent credits include the critically acclaimed Nora-Underground Railway coproduction of *Arabian Nights* and *Porgy and Bess* (ASL interpreter) at the ART. His local credits include the ART (Yefrim in *Uncle Vanya*, Soldier in *Three Sisters*), Regis College/Harwich Junior Theatre (*Mother Hicks*), WFT (13 productions, including Louis in *The Trumpet of the Swan*, IRNE nomination), and the Gold Dust Orphans (Ensemble in *The Whizz*). Elbert is also an American Sign Language theatrical interpreter, ASL coach, playwright, and tutor. Thanks to Jane, Sue, Charles, and WFT for welcoming him back on stage.

**Lenni Kmiec (Citizen of Oz, Jitterbug)** is thrilled to make her WFT debut! Currently working with the ART in both *The Donkey Show* and *The Rocky Horror Show* (Gold Dust Orphans), she was seen in both the original and revival casts of *Tonya and Nancy: The Rock Opera* at OBERON. Lenni has also worked with the Hanover (*A Christmas Carol*) and was featured in several Boston-based commercials. Other local roles include Sarah in *BEDS* (Fort Points), Petra in Metro



Stage's *A Little Night Music*, and Lou Ann in the Reagle's *Hairspray*. A recent graduate of Wagner College, her previous college credits include Beth March in *Little Women*, Maggie Anderson in *Brigadoon*, Susan in *tick, tick... BOOM!*, and Pitti-Sing in *The Mikado*. Lenni has also performed with the BLO, NE Opera Company, and the BU Theatre Company.

**Leah Kostick (Munchkin)** was born in Boston and attends the Carroll School in Lincoln, where she is now in the 6th grade. For the past several years, she has been involved in numerous community theatre productions, as well as with the BCT. Leah studies dance, voice, and acting, and loves to ski, do gymnastics, and play soccer in her spare time.

**Dorothy Levine (Winkie)** is a 5th grader at Fayerweather Street School in Cambridge. She is thrilled to be back at WFT after appearing in *Charlotte's Web* and *The Little Mermaid*. Dorothy enjoys writing stories, playing with her cousins and friends, and taking care of animals.

**Marjorie Lusignan (Props Designer)** is an RI native, enjoying her 4th season of taking props to a whole new level at WFT. She continues to create things beyond her wildest expectations, and shares her skills and talents with young people as a member of WFT's Education Program faculty.


**Becky Mason (Winkie)** returns for her 3rd WFT production, having been seen here previously in *The Little Mermaid* and *Charlotte's Web*. She will be appearing as Babette in her school's production of *Beauty and the Beast*.

**Tim McCarthy (Videographer)** is first and foremost a gay video historian. He travels the world in search of LGBT culture—90 countries so far and all 7 continents. He has worked with Jim Byrne and WFT before and is glad to be a part of *The Wizard of Oz*.

**Franklin Meissner, Jr. (Lighting Designer)** is pleased to return to his favorite Family after designing the lighting for *The Phantom Tollbooth* and last season's *The Secret Garden*. He recently designed *A Christmas Story* at New Rep, where he has also designed 18 other productions including the critically acclaimed *The Wild Party* (IRNE nomination), *Hot Mikado*, *Cabaret*, *Dessa Rose*, *Sweeney Todd* (IRNE Award), *Into the Woods*, *Ragtime*, and *Moby Dick* (IRNE Award). Last year, he designed the lighting for *According to Tip* at the Lyric, as well as for its original, sold-out run in Watertown and for its subsequent move to the Stuart Street Playhouse. His work has also been seen Off and Off-Off Broadway in NYC and at Boston Playwrights' (IRNE Award), *SpeakEasy*, the Modern, Stoneham (IRNE nomination), Central Square, Company, NSMT, South Shore Music Circus, Sanders Theatre, various corporate events and colleges around the state, and at 40 Carnegie Hall performances. Frank is a member of United Scenic Artists. [www.FranklinMeissner.com](http://www.FranklinMeissner.com).


**Melissa Miller (Costume Designer)** is a visual artist whose works most recently appeared in the group show "Sacred Earth...The Artist's View" at the Atelier Decorative and Fine Art Gallery in Greenport, NY. She worked at the Metropolitan Museum of Art as a textile conservator, and has designed for the Light Opera Company of Manhattan, the Harwich Junior and Winter Theatres, and WFT. Her credits here include *Alice's Adventures in Wonderland*, *Watch on the Rhine*, *Superman*, *Holiday Stories*, *Cinderella*, *Beanstalk*, *Peter Pan*, *Androcles and the Lion*, *Charlotte's Web*, *Holes*, *Lilly's Purple Plastic Purse*, and *Aladdin*. She lives in NYC with her children, Harry and Josie.

(continued on page 8)



**confidence  
creativity  
collaboration**

*A community that values academic, social, and emotional growth equally.*



Pre-K – Grade 6  
69 Grove St., Watertown, MA  
617-923-4156 | atrium.org



**Carolle Photography**  
*Photography for the Performing Arts*

headshots • productions • events • CDs • portraits

Kippy Goldfarb  
617.946.4664 [carollephoto@aol.com](mailto:carollephoto@aol.com)

**Dave's  
AUTO REPAIR**

"Proud to keep the Family Driving"

- Complete Auto Repair
- Inspection Stickers
- Towing Services
- Transmissions
- Suspensions

**All Service is Guaranteed**

880 Commonwealth Ave (rear)  
617-739-3100 617-566-2235



## BEST WISHES and CONTINUED SUCCESS

from

**LILLIAN GONZALEZ,  
CPA, MST, CSEP**

14 Page Terrace  
Stoughton, MA 02072  
(781) 344-1040  
FAX (781) 344-4449  
[www.go-cpas.com](http://www.go-cpas.com)

## CERTIFIED PUBLIC ACCOUNTANTS

- ACCOUNTING
  - AUDITING
  - TAXES
- FINANCIAL PLANNING
- RETIREMENT PLANNING
  - ESTATE PLANNING

WHO'S WHO (continued from page 7)

**Surya Minton (Munchkin)** was last seen here in *Aladdin*. She attended WFT's Summer Program for the past 2 years and enjoys taking performance classes at WFT. Surya was born in Kathmandu, Nepal, and lives in Brookline with her mom, dad, older brother, and dog Kia. She is an avid reader who loves to ice skate and swim. Surya is currently in the 3rd grade at the Lincoln School. She is thrilled to be in this production!

**Roger J. Moore (Sound Designer)** has been with CBS Radio – Boston for over 20 years and is currently the Assistant Production Director and commercial voice of 98-5 The Sports Hub. His voice has been featured on various regional and national radio and television spots. He also enjoys freelance video production. Roger is currently the stage manager and sound designer for the Gold Dust Orphans (*Phantom of the Oprah*, *All About Christmas Eve*, *Death of a Saleslady*) and has worked with WFT since 2008.

**Kharimah Muhammad (Winkie)**, a student at Academy of the Pacific Rim, enjoys theatre, singing, dancing, and visual arts. She was last seen here in *ANNIE* and hopes to appear in many more WFT productions!

**Yvonne Murphy (u/s Scarecrow)** is delighted to be a part of the retelling of this classic tale, working alongside such a lovely cast. Last seen here in *Charlotte's Web* (Goose), her theatrical honors include Best Supporting Actress at the EMACT Festival (*Raisin in the Sun*, *Footlight Club*) and 2 IRNE nominations. Yvonne has also appeared in productions with *Up You Mighty Race*, *Another Country*, *Zeitgeist*, and *Acme*. Always thanks to Sue, Jane, and Jim.

**Claudia Murray (Munchkin)** is a 5th grader at the Hennigan School in JP who has studied theatre at WFT and Riverside. Her passion for the stage has taken her to *The Little Mermaid* and *Aladdin* at WFT and *High School Musical II*, *Thoroughly Modern Millie*, and, most recently, *Seussical* (Horton) at Riverside. Claudia plays the piano, studies ballet, and does competitive gymnastics. Thanks to the friends and family who make it all fun!

**Nellanna (Citizen of Oz, Jitterbug)** is immensely honored to be making her WFT debut. She was last seen as Alice's Daughter in the Lyric's *Big River*. Nellanna made her professional debut as Trix the Aviatrix in SpeakEasy's *The Drowsy Chaperone*. Other recent and favorite credits include Apollo Performer (*Buddy: The Buddy Holly Story*), Landlady/Lula (*Violet*), Joanne Jefferson (*RENT*), Cleanin' Woman (*Working*), Aida (*AIDA*), and Bombalurina (*CATS*). Nellanna is thankful to the cast, crew, and staff at WFT for this amazing opportunity and experience.

**Leah Norman (ASL Interpreter)**, a freelance American Sign Language interpreter, started her interpreting career in NYC and recently moved to the Boston area. She debuted as a theatre interpreter for *The Wizard of Oz* at the Heinz Hall in Pittsburgh. Her interpreting premiere in Boston was at the Colonial Theatre; she recently interpreted the BU productions *Marisol* and *The Road to Mecca*. Leah worked with WFT on *ANNIE* last season and is pleased to be back.

**Shea Miller Novello (Munchkin)** is a 3rd grader at the Driscoll School who loves acting, snowboarding, and gymnastics and plays on a USTA junior tennis team. She has been seen at WFT in *The Little Mermaid* and *Aladdin*. Shea gives a big shout out to Mimi for all that she does for her.

**Betsy Ogrinc (Winkie)**, 13, lives in Medfield and attends the Gifford School. She is thrilled to be returning to the WFT stage! She has previously performed here in the summer Advanced Performance Intensive productions of *Once on this Island* (Agwe) and *A Year with Frog and Toad* (Bird).



Betsy has enjoyed many WFT classes. She dances at Paulette's Ballet Studio, sings in the Praise Choir at UCC Medfield, and has also attended Brave Arts. Special thanks to her mom and au pair Patricia for supporting her throughout her theatrical endeavors, and to all of her friends because *friends are the family we choose for ourselves*.

**Adrienne Paquin (Citizen of Oz, Jitterbug)** is thrilled to be making her WFT debut, after appearing this fall in *Rent* at New Rep and in SLAMBoston Uncensored and Boston's first One-Minute Play Festival. She studied last summer at American Conservatory Theater and earned a BA in Theatre from UMass Amherst, performing as Beline in *The Imaginary Invalid* and Cecily in *The Importance of Being Earnest*. She has also appeared in Company's *Will Rogers Follies*, *Thoroughly Modern Millie*, *Singin' in the Rain*, and *The Producers* (Ulla). Adrienne has done several productions in western MA, including *Candide* (Amherst), as well as *Milosevic at the Hague* (Serious Play Productions!), which she toured to Joakim InterFest in Kragujevac, Serbia in 2009.

**Julia Perry (Munchkin)** is thrilled to be returning to WFT! She is an 8th grade honors student who loves to perform. Past credits include *Lilly's Purple Plastic Purse* and *The Velveteen Rabbit* (BCT), *HONK!* (WFT), and *Hairspray* (Fiddlehead). In her spare time Julia loves to cook, horseback-ride, and waterski. Thanks to everyone at WFT for making this a wonderful experience, to her family for being so supportive, and to her vocal coach John.

**Gamalia Pharms (Aunt Em, Guard)** is delighted to be a part of this amazing cast! Some of her favorite WFT shows include *HONK!*; *Seussical*; *Beauty and the Beast*; *The Sound of Music*; *Hello, Dolly!*; *Trumpet of the Swan*; and *The Good Times Are Killing Me*. Gamalia has performed in regional theatres up and down the East Coast, and has a BFA from Boston Conservatory of Music. Much love and thanks to Jim, Jane, Sue, Charles, Kay, and the entire marvelous WFT staff and crew! A shout out to Mass College of Art and Design, her second home!

**Joanna Rosen (u/s Winkie)** is thrilled to be returning to WFT after performing in *ANNIE* last season and in the summer Advanced Performance Intensive production of *Fiddler on the Roof Jr.* Her regional credits include Martha Cratchit in *A Christmas Carol '09, '10, and '11* (the Hanover); Young Cosette (NSMT) and Gavroche (Ogunquit) in *Les Misérables*; and a Mole in *A Year with Frog and Toad* (NSMT). Joanna has been acting since the age of 6 and has appeared in over 25 community theatre productions. She is a freshman in high school and enjoys singing and playing in her school chorus and band. Thanks to her wonderful family for supporting her passion for theatre.

**Alycia Sacco (Citizen of Oz, Jitterbug)** is thrilled to be making her WFT debut. Regional credits include *Big River*, *Animal Crackers* (Harpo Marx), and the Elliot Norton-Award-winning production of *...Nicholas Nickleby* with the Lyric; *Arcadia* (Thomasina Coverly) with Bad Habit; and *The Nutcracker*, *The Sparrow*, *Miracle on 34th Street*, and *The Grapes of Wrath* (Rosa Sharon) with the Stoneham. Alycia is currently working with the Stoneham Young Co. as an acting instructor and director of their winter production of *Once upon a Mattress*. She received her training from the Hartt School of Music in CT. Thanks to her friends and family for all their love and support. Enjoy the show!

**Zoë Simone Shay-Tannas (Munchkin)** is a 4th grader thrilled to be in her first WFT production. She has developed a love for theatre while working with the theatre artists in WFT's Summer Program. Her interests include piano, horseback-riding, and her labradoodle, Therblig.

(continued on page 17)



**GEORGE W. BLAISDELL**  
INSURANCE BROKER

*The Governor's Mansion*  
P.O. Box 644 Hampton Falls, NH 03844

TOLL FREE 800-882-8535

**NE MOVES**  
Mortgage, LLC



**Whatever your residential financing needs, we will tailor a loan that's right for you:**

- Purchase
- Refinance
- FHA, VA & State Housing
- First-Time Home Buyer
- Special Relocation Programs
- Conforming & Jumbo Loans
- Adjustable & Fixed Rate
- Low Down Payment Loans
- Purchase & Rehab Mortgages
- Free Pre-Approvals

**KEVIN GREELEY**

*NEMoves Mortgage Consultant*  
NMLS #38403

171 Huron Ave., Cambridge, MA 02138

Work: 617-864-8566 Cell: 781-929-4147

Email: Kevin.Greeley@NEMoves.com

NMLS #2584



# The Wizard of Oz

by L. Frank Baum with music and lyrics by Harold Arlen and E.Y. Harburg,  
background music by Herbert Stothart, dance and vocal arrangements by Peter Howard, and  
orchestration by Larry Wilcox. Adapted by John Kane for the Royal Shakespeare Company based upon  
the classic motion picture owned by Turner Entertainment Co. and distributed in all media by Warner Bros.

MUSICAL DIRECTOR

**Jon Goldberg**

DIRECTOR & SET DESIGNER

**James P. Byrne**

CHOREOGRAPHER

**Laurel Conrad**

COSTUME DESIGNER

**Melissa Miller**

LIGHTING DESIGNER

**Franklin Meissner, Jr.**

SOUND DESIGNER

**Roger J. Moore**

VIDEOGRAPHER

**Tim McCarthy**

PROPS DESIGNER

**Marjorie Lusignan**

PRODUCTION STAGE MANAGER

**Lindsay D. Garofalo\***

AUDIO DESCRIBERS

**Valerie C.M. Ching, Andrea Doane**

ASL INTERPRETERS

**Leah Norman, Gabrielle Weiler, Desiree Weems**

## THE CAST

Dorothy Gale **Katherine Leigh Doherty\***

Toto **Sofia Pilar Villafane**

Aunt Em **Gamalia Pharms\***

Uncle Henry **Matt Spano**

Cowardly Lion **Timothy John Smith\***

Tin Woodsman **Shelley Bolman\***

Scarecrow **Ricardo Engermann\***

Wicked Witch of the West **Jane Staab\***

Glinda Good Witch of the North **Lisa Yuen\***

Wizard of Oz **John Davin\***

Nikko, Commander of Monkeys **Elbert Joseph**

Munchkin Mayor **Patrick Barron**

Munchkin Coroner **Caroline Workman\***

**CITIZENS OF OZ/POPPIES/JITTERBUGS:** Alexander Cruz, Kaedon Gray, Lenni Kmiec, Nellanna, Adrienne Paquin, Alycia Sacco, Matt Spano, Alan R. White

**WINKIES:** Ally Aquilina-Piscitello, Anika Hartje, Gabriella Huggler, Katherine Jimenez, Dorothy Levine, Becky Mason, Kharimah Muhammad, Betsy Ogrinc, Joanna Rosen, Molly Stachowicz, Molly Thomas, Kimetra Thompson

**MUNCHKINS/MONKEYS/CITIZENS:** Samil Battenfeld, Georgia Branger-Klein, Camille Eliane Brown, Will Christmann, Isabelle Cotney, Aria DeMarco, Katherine Gustafson, Rowen Halpin, Hiroshi Irizarry, Leah Kostick, Surya Maya Minton, Claudia Murray, Shea Miller Novello, Julia Perry, Zoë Simone Shay-Tannas, Arthur Wheelock-Wood, Christina Xiao, Yarden Yacoby

Understudies for principals include Alexander Cruz, Kaedon Gray, Yvonne Murphy\*, Nellanna, Adrienne Paquin, Joanna Rosen, Alycia Sacco, Matt Spano, Alan R. White

*THE WIZARD OF OZ* is presented through arrangement with Tams-Witmark Music Library, Inc.,  
560 Lexington Avenue, NY, NY 10022.

The play is in two acts. There will be one intermission between the acts.

Ask the House Manager for individual sound enhancement devices.

The taking of photographs and use of recording devices is strictly forbidden.

**Please turn off all electronic devices.**

**Please, no eating or drinking in the theatre.**



\*Member of Actors' Equity Association, the Union of Professional Actors and Stage Managers in the United States. The Wheelock Family Theatre is operating under the terms of a Developing Theatre's Program of Actors' Equity Association. The contract used is a Letter of Agreement.



# MUSICAL PROGRAM

## ACT ONE

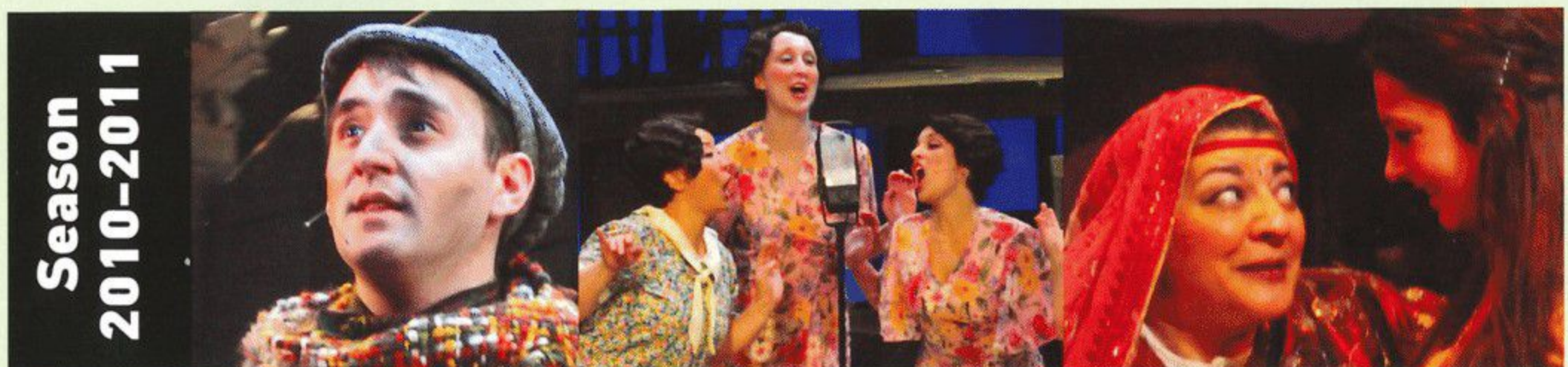
Over the Rainbow.....	Dorothy
Munchkin Musical Sequence.....	Munchkins, Glinda
Yellow Brick Road.....	Munchkins, Dorothy
If I Only Had a Brain.....	Scarecrow, Dorothy
We're off to See the Wizard.....	Dorothy, Scarecrow
If I Only Had a Heart.....	Tinman, Dorothy
If I Only Had the Nerve.....	Lion, Dorothy, Scarecrow, Tinman
We're off to See the Wizard.....	Lion, Dorothy, Scarecrow, Tinman

## ACT TWO

Merry Old Land of Oz.....	Dorothy, Scarecrow, Tinman, Lion, Guard, Citizens of Oz
King of the Forest.....	Lion, Dorothy, Scarecrow, Tinman
Jitterbug.....	Dorothy, Scarecrow, Tinman, Lion, Bugs
Ding Dong! The Witch Is Dead.....	Winkies
Finale.....	Ensemble

## ORCHESTRA

Keyboards/Conductor: Jon Goldberg  
 Reeds: Jason May, Louis Toth      Trumpet: Paul Perfetti  
 Violin: Stanley Silverman      Bass: Kate Foss  
 Percussion: Zack Hardy



Equity actors pictured: June Baboian, Andrew Barbato, Jenna Lea Scott, Jane Staab

Open captioning provided in collaboration with c2 (caption coalition) inc, www.c2net.org.



Wheelock Family Theatre is a member of ArtsBoston; StageSource, the Alliance of Theatre Artists and Producers; Cultural Access New England (CANE); the Theatre Artists' Marketing Alliance (TAMA); and the Consortium of Boston Area Children's Theatres (CBACT).





International.  
Individual.  
Inspirational.

## British School of Boston

Academically rigorous and internationally focused, featuring the International Baccalaureate Diploma. Serving students in Nursery through High School.

Open Houses:	Friday, November 11	9:30-11:00 a.m.
	Sunday, December 4	1:00-3:00 p.m.
	Wednesday, January 25	9:30-11:00 a.m.

FREE STORY TIME PROGRAMS FOR 2 AND 3 YEAR OLDS.

617.522.2261 • [www.britishschoolofboston.org](http://www.britishschoolofboston.org)

Who says  
**cleaning house**  
isn't FUN?

**baystateparent**

winner of 30 awards in 2010

INCLUDING BEST PARENTING PUBLICATION IN NORTH AMERICA

*"baystateparent covers all the bases for parents in Massachusetts. Eye-catching covers... a great reference with a full calendar. Excellent ad layout and design. Great use of 4-color in ads and content. Appears to be a strong revenue producer."*

- New England Newspaper & Press Association

**PICK UP YOUR FREE COPY TODAY**

**FOR ADVERTISING INFORMATION, CONTACT 508-865-7070  
[WWW.BAYSTATEPARENT.COM](http://WWW.BAYSTATEPARENT.COM)**





## Wheelock Family Theatre Advisory Board

**Carola Cadley**

Vice President, Corporate Development and Marketing, Children's Hospital Trust, Boston

**Carole Charnow**

President and Chief Executive Officer, Boston Children's Museum

**Eleanor Chin**

Principal, Clarity Partners Coaching and Consulting, Jamaica Plain

**Edward F. Coakley**

President (retired), E.F. Coakley and Associates, Boston

**John (Jeff) Coburn, Co-Chair**

Managing Director, Coburn Consulting, Boston

**Ceronne B. Daly**

Director, Office of Pre-Collegiate and College Access Programs, Wheelock College, Boston

**Mindy d'Arbeloff**

Marketing, communications, and development consultant, Milton

**Rosario A. Dominguez**

Senior Training & Technical Assistance Associate, Head Start National Center on Program Management and Fiscal Operations. Education Development Center, Inc., Waltham

**Scott Edmiston**

Director, Office of the Arts, Brandeis University, Waltham

**Ed Feather**

Senior Brand Director, PARTNERS+simons, Boston

**Andrea (Andi) Genser**

Executive Director, WE CAN Corporation, Harwich Port

**Nancy Gertner**

Professor of Practice, Harvard Law School, Cambridge

**Lillian Gonzalez**

Principal, Gonzalez & Associates P.C., Stoughton

**Alicia Gordon**

Partner, Gordon Lower Public Relations, Boston

**Charles (Chuck) B. Gordon**

Vice President, Development, Health Leads, Boston

**Elvernoy (Albie) Johnson**

State Librarian, State Library of Massachusetts

**Mieko Kamii**

Educator (retired), Belmont

**Steven M. Key, Esq.**

Attorney, Law Office of Steven M. Key, Jamaica Plain

**Robin Mount, Co-Chair**

Director, Office of Career Services, Harvard University, Cambridge

**Meegan Turet**

Fine Arts Chair, Academy of the Pacific Rim Charter Public School, Hyde Park

**Linda Chin Workman**

President, Asian Task Force Against Domestic Violence, Boston

### WHEELOCK FAMILY THEATRE CONTACTS

Tickets and Subscriptions:	617.879.2300	tickets@wheelock.edu
Classes:	617.879.2252	jbay@wheelock.edu
Auditions:	617.879.2235	jstaab@wheelock.edu
Donations:	617.879.2252	kelliott@wheelock.edu
Volunteer Opportunities:	617.879.2147	cbaldwin@wheelock.edu

**Mail:**

200 The Riverway  
Boston, MA  
02215-4176

**Web:**

[www.wheelockfamilytheatre.org](http://www.wheelockfamilytheatre.org)



# Wheelock Family Theatre

## STAFF

Producer	<b>Susan Kosoff</b>
Casting Director/ASM/Business Manager	<b>Jane Staab*</b>
Education Program Director	<b>John Bay</b>
Publicity and Marketing Director	<b>Charles G. Baldwin</b>
Assistant to the Producer/Grantswriter	<b>Kay Arden Elliott</b>
Development Consultant	<b>Janet Bailey</b>
Assistant Education Program Director	<b>Lisa Rowe-Beddoe</b>
Audience Engagement Coordinator	<b>Marianne Adams</b>
Box Office Supervisor	<b>Stephen Reinstein</b>
Technical Director	<b>Matthew T. Lazure</b>
Production Manager	<b>Brian Masters</b>

## PRODUCTION TEAM

Assistant to the Director	<b>Emily Kosoff</b>
Technical Assistants	<b>Marjorie Lusignan, Tony Paradiso</b>
Costumer	<b>Lisa Simpson</b>
Assistant to the Costumer	<b>Jennie Hudson-Bryant</b>
Stitchers	<b>Mina Ha, Sarah Kershaw, Beth Niemczyk, Pier Talbot</b>
ASL Consultant	<b>Kristin Johnson</b>
Captioning	<b>Jamie Aznive, Janet Cagan-Teuber Neil Gustafson, Ruth Kahn, Mary ElizaBeth Peters</b>
Master Electrician	<b>Andrew Andrews</b>
Scenic Carpenters	<b>M. Doughty, Alessandra Mondolfi, Phyllis Smith, Mark Vallone</b>
Scenic Painters	<b>Melinda Cross, Brandi Napier</b>

## EDUCATION PROGRAM FACULTY

Kortney Adams, Esme Allen, Melissa Baroni, Dana Jay Bein, Christy Betit, Danny Bolton, Jennifer Buller, Robin Connors, Laura DeGiacomo, Andrea Doane, Donna Folan, Ellie Friedland, Lorraine Gilman, Jeri Hammond, Angela Harvey, Hannah Husband, Angie Jepson, Kristin Johnson, Marjorie Lusignan, Brian Masters, W. Yvonne Murphy, Grace Napier, John O'Neil, Megan Otteson, Mary ElizaBeth Peters, Sophie Rich, Ilyse Robbins, M. Lynda Robinson, Adam Sanders, P.J. Sullivan, Fran Weinberg, Alan White

## CREWS, WORK/STUDY STUDENTS, AND INTERNS

Soriah Barrett, Sonia Belkin, Lauren Bird, Marvin Brow, Mia Cianciarulo, Katelyn Coty, Sindel Desanges, Kali Dolen-McCarthy, Jacky Elias, Brooke English, Orbelina Erazo, Eve Evens, Fantasia Fernandes, Kayla Howell, Ellie Huang, Megan Hughes, Yolanda James, Diana Kilguss, Rachel Leblanc, Colin Lee, Christina Lelon, Robin Liberty, Victoria LoRusso, Kaitlin Mahon, Shannon Mahoney, Jake Maio, Sharrone Marciano, Elizabeth Meisten, Nural Mohammed, Stacy Moynahan, Emily Nadel, Gregory Noël, Julia Perry, Ali Pimentel, Jen Provoost, Alicia Selman, Coretta Simmons, Jake Sims, Lindsey Snyder, Catherine Torres, Doris Vincent, Yaara Yacoby

## SPECIAL THANKS

Shawn P. Cotter; Kimberly Elliott for the study guide; Ann Hart for poster art; Susan Mackey, Mike Fesko, Frank Romero, and members of the Wheelock College Facilities staff; Tony Mosley and the staff of the Service Center; Nancy Viall Shoemaker; Swamp Meadow Community Theatre; Wheelock Women's Basketball; and the Office of the President and members of the Wheelock College community who have made this production possible.

*We wish to thank all the people who have joined with us since the program went to press.*



## The Fourth Decade

Since 1981 Wheelock Family Theatre has been bringing high-quality professional theatre performances and educational programs to children and families from communities throughout the Boston area. Now, as we begin our fourth decade, we are inviting our patrons to contribute to our long-term sustainability by making a commitment to support WFT with a contribution in each of the next three years. Funds will be used to invest in the people and infrastructure we need to provide more and even better experiences for children and families in the future.



Jane Staab as the Wicked Witch in WFT's 1985 production of *The Wizard of Oz*

More than 40 generous patrons have already demonstrated their dedication to professional, affordable family theatre with three-year commitments of support. Will you join them? Please contact Kay Elliott at 617.879.2252 for more information.

## The Fourth Decade Supporters

- |                             |                                  |
|-----------------------------|----------------------------------|
| Anonymous (3)               | Melissa Miller                   |
| Judy and Bob Anderson       | Robin Mount                      |
| Janet Bailey                | The Mussafer Family              |
| Danny Bolton                | Grace Napier and William Monnen  |
| The Brakeman Family         | Greg Nash                        |
| Carola Cadley               | Anne H. and John W. Newton       |
| Catherine and Jeff Coburn   | The Niziak Family                |
| Lauren and George Doherty   | Lisa Johnson Ogrinc              |
| The Eldridge-Ingram Family  | Suzanne Olbricht                 |
| Kay Arden Elliott           | Mary ElizaBeth Peters            |
| Priscilla Fales             | Alfreda Piecuch                  |
| Andrea Genser               | Sharon L. Rich and Nancy E. Reed |
| Erin Gilligan and Hoil Kim  | Brooke and Neal Sandford         |
| Gonzalez & Associates, P.C. | Elizabeth and Chip Sheeran       |
| The Hedequist Family        | Jane Staab                       |
| Pat Jehlen                  | Hope Haslam Straughan            |
| The Kaim Family             | Shifteh Veyssi                   |
| Susan Kosoff                | Lee and Steve Whitfield          |
| Nicky and Paige L'Hommedieu | Martha and Jeff Winokur          |



## Wheelock Family Theatre Supporters

We are proud of our commitment to keep the quality of our productions high and our ticket and tuition prices affordable. But we can't do that without the support of those generous institutions and individuals who value our work and understand the contribution we make to the community. Ticket income covers only about two-thirds of our costs—won't you help us cover the other third? To make a donation, visit [www.wheelockfamilytheatre.org](http://www.wheelockfamilytheatre.org) or contact Kay Elliott at 617.879.2252.

### Institutional Supporters

Actors' Equity Foundation  
Bank of America  
Boston Parents Paper  
Jane B. Cook 1992 Charitable Trust  
Google  
Massachusetts Cultural Council  
MathWorks  
PARTNERS+simons  
Peabody Foundation  
Carl and Ruth Shapiro Family Foundation  
Wheelock College  
Yawkey Foundation

### Individual Donors

#### Angels (\$1,000 and up)

Anonymous (2)  
Judy and Bob Anderson  
Atlantic Philanthropies Director/  
Employee Designated Gift Fund  
The Brakeman Family  
Carola Cadley  
Catherine and Jeff Coburn  
Sally Reeves Edmonds  
Erin Gilligan and Hoil Kim  
Gonzalez & Associates  
The Hedequist Family  
Susan Kosoff  
Robert Lincoln  
Melissa Miller  
Robin Mount  
The Mussafer Family  
Greg Nash  
Suzanne Olbricht  
Peninsula Charities Foundation II  
Brooke and Neal Sandford  
Jane Staab  
Shifteh Veyssi

#### Leading Players (\$500-\$999)

Janet Bailey  
Charles G. Baldwin  
Eleanor Chin and Kevin Gillespie  
Sarah and Richard deLima  
Bob Doane  
Lauren and George Doherty

Kay Arden Elliott  
Priscilla Fales  
Ellie Friedland  
Andrea Genser  
Leslie E. and Charles B. Gordon  
The Joanis Family  
The Kaim Family  
The Lando Family  
Matthew T. Lazure  
Brian Masters  
Lisa McElaney and Abe Morell  
The Niziak Family  
Carol A. Olmstead  
Elizabeth and Chip Sheeran

#### Supporting Players (\$100-\$499)

Anonymous (4)  
Detris and Olivia Adelabu  
Amy Almeida  
Ann-Josephine and Matthew Auguste  
Arthur Barlas  
Anamaria and James Barron  
Margaret Bergstrand  
Mindy Berman and Family  
Teresa Betit and Haley Medea  
Alan and Debbie Bieri  
Susan Bigger and Kevin Belanger  
Danny Bolton  
Debra Borkovitz  
Cheryl and Leonard Brown  
Richard Charlton  
Carole Charnow  
Marla Choslovsky and Paul Greenberg  
Ed Coakley  
Ellen Colton  
Sue Costello and Jeff Keffer  
Robert Crabtree  
Tina and Harvey Crosby  
John Davin  
Susan DeColaines and Bill Swanson  
Zelinda and John Douhan  
The Eldridge-Ingram Family  
Raymond Fahrner  
Barbara Elliott Fargo  
Bobbi Fox  
Nancy Gertner

Mary Beth Gordon  
Dot Gorenflo  
Yvette Hochberg  
Andrea C. Hoffman  
Mary C. Huntington  
Jeanne and Norton Juster  
Ruth C. Kahn  
Sally Kindleberger  
Nicky and Paige L'Hommedieu  
Blair MacInnes  
Ulla C. Malkus  
The Mardell Sandberg Family  
John McCormack  
Elizabeth Moriarty  
Mila J. Moschella  
Grace Napier and William Monnen  
Lisa Johnson Ogrinc  
Charlotte and Ed Peed  
The Perry Family  
Mary ElizaBeth Peters  
Nancy Fowle Purinton  
Bonnie Rosenberg  
Judith H. Rosenberg  
Stefi Rubin and Fred Marchant  
Anne and David Salant  
Spring Sirkin  
Judy Smith  
Ruthann Sneider  
Mr. and Mrs. George R. Sprague  
William duPont Staab, Jr.  
Thomas Stemberg  
Carolyn Auwers Tatarian  
Cynthia Price Taylor  
Joan I. Thorndike  
Jack Welch  
Martha and Jeff Winokur  
Wooden Kiwi Productions, LLC

We are grateful to all our generous donors, including 59 contributors of amounts below \$100.

This list reflects gifts and pledges made between 7/1/11 and 1/15/12.

### Friends of Wheelock Family Theatre

Hats off to our wonderful volunteers—we couldn't do it without you! Opportunities for volunteering at WFT abound; for more information, contact Charles G. Baldwin, 617.879.2147, [cbaldwin@wheelock.edu](mailto:cbaldwin@wheelock.edu).

Jacqui Alexander, Shelita Bailey, Jim Carr, Judi Cook, Marianna Serra Flayhan, Pepper Green, Bridget Hoarty, Wendy Joanis, Jessica Jones, Teresa Kelley, Hilary Law, Regina Levkovich, Heidi Lopez, Ronette Lyle, Claudia Murray, Antonia Nedder, Erin O'Reilly, Ed Pazzanese, Catherine Perakis, Gamalia Pharms, Donna Reulbach, Elizabeth Solomon, Gilesa Thomas, Sharon and Molly Thomas



(continued from page 9)

**Timothy John Smith (Cowardly Lion)** appeared at the WFT last season as Daddy Warbucks in *ANNIE*. Recent credits include the Governor in *Candide* and Taylor in *Prelude to a Kiss* at the Huntington, Martin Dart in *The Receptionist* and Le Mec in *Paris by Night* at Trinity Rep, as well as Satan in *Jerry Springer: The Musical*; Johan in *Groundswell*; General Howell in *Kiss Me, Kate*; Henry Higgins in *My Fair Lady*; Richard III in *Richard III*; Titania/Theseus in *A Midsummer Night's Dream*; Eddie in *Fool for Love*; and Richard Henry Lee in *1776* (IRNE Award). He is a graduate of Saint Anselm College and Trinity Rep Conservatory. [timothysmithactor.com](http://timothysmithactor.com)

**Matt Spano (Uncle Henry, Citizen of Oz, Jitterbug)** was last seen here in *ANNIE*. Other credits include ensemble swing in *Candide* (Huntington); *Sense and Sensibility: The Musical* (Wellesley Summer); *Sunfish, The Dinosaur Musical*, and *A Year with Frog and Toad* (Stoneham); *Matchmaker Matchmaker I'm Willing to Settle* (workshop co-produced with the ART); and the US premiere of *Sleep No More* (ART/Punchdrunk). Matt also regularly performs for young audiences on KidStage at the Boston Children's Museum/City Stage. In addition, he teaches a musical theatre summer camp at the New School of Music in Cambridge. He holds a bachelor's in theatre performance from Northeastern.

**Jane Staab (Wicked Witch of the West)** has taken on many roles over her 31 years as resident AEA actor and co-founder of WFT, but none quite as outrageous as this. Her last "evil" character was Madame Defarge in *A Tale of Two Cities*. Some of her favorite roles are Emily Dickinson in *The Belle of Amherst*, Cora Flood in *The Dark at the Top of the Stairs*, and Hanna in *The Witch of Blackbird Pond*. She is the composer of last season's *The Secret Garden* and director of WFT's recent productions of *ANNIE*, *HONKI!*, and *The Phantom Tollbooth*. Jane cherishes the opportunity to mentor the many talented young people who grace WFT's stage in each production.

**Molly Stachowicz (Winkie)**, a senior at Westwood HS, has been performing her entire life. Her love for the theatre grows with each show she's in. This is her 2nd musical at WFT and she is ecstatic to be back. Previous roles have included Ensemble in *Beauty and the Beast* (WFT), Duffy in *ANNIE* (Open Fields), and Anybodys in *West Side Story* (XBHS). In her free time she loves to run, sing, dance, and act. Molly plans to run the Boston Marathon for the 2nd time in April, and to continue to pursue her interests at college in the fall. She'd like to thank her family, Jon, Jane, Jim, and her friends for their support.

**Molly Thomas (Winkie)** has been dancing since preschool and started theatre classes in first grade. This is her 3rd WFT production, following *Aladdin* and *HONKI!*. She most recently played Mrs. Granberg in *Pippi Longstocking* at Ogunquit Playhouse; she danced in *It's Christmas Time* at the Reagle in 2010. Molly has been featured in print ads, magazine articles, and company brochures through Model Club Inc. and was a movie extra in *Shutter Island*. She takes acting and dance classes in Boston during the year, and she can't wait to go back to Stagedoor Manor this summer. A competitive swimmer, Molly enjoys hanging out with friends in her free time.

**Kimetra Thompson (Winkie)**, a sophomore at Boston Latin Academy, is more than thrilled to be back for another season on the WFT stage! She has taken a wide range of classes at WFT since she was 4. Now, she is in a leadership program with Citi Performing Arts Center. This is her 6th WFT production; credits include *Aladdin* (Civilian), *The Little Mermaid* (Eel and Maid), *Charlotte's Web* (Spectator), *Winnie-the-Pooh*

(Narrator) and *Lilly's Purple Plastic Purse* (Dancing Mouse). Kimetra is always open to a new opportunity and challenge. Special thanks to Ramona Lisa Alexander, her mother, and WFT staff for always being there to support her.

**Sofia Pilar Villafane (Toto)** is a 2nd grade student at the Pierce School in Brookline. Born in Manhattan, Sofia began ballet classes when she was a year old. For the past 5 years, she has trained as a gymnast, the last 2 years at Brestyan's Gymnastics in Burlington. In 2010, Sofia enrolled in the WFT Summer Program, where her interest in onstage performance grew. She plays the piano, has participated in many recitals, and is currently enrolled as a student in the Brookline Music School. Sofia is a member of the Girl Scouts of America. She loves drawing, cooking, and writing adventure stories about puppies.

**Desiree Weems (ASL Interpreter)** was last seen here ASL interpreting Milo, the main character in *The Phantom Tollbooth*. She studied acting and ASL interpreting at UNH-Manchester. Love to family, friends. A special thank you to Kristin Johnson for pushing her forward and keeping her going.

**Gabrielle Weiler (ASL Interpreter)** has trained in both interpreting for theatre and acting technique. She is currently studying at Tufts. Gabrielle has been interpreting for local audiences for the past 6 years, including WFT's *A Tale of Two Cities*, as well as *HAIR* (Broadway Across America), the Newport and Clearwater Folk Festivals (2009-2011), blues greats Aretha Franklin and BB King (2010), and too many variations on *The Vagina Monologues* to count. Gabrielle is forever indebted to the magnificent Kristin Johnson, Leah Norman, and Desiree Weems for their inspiration and shining example.

**Arthur Wheelock-Wood (Munchkin)** enjoys singing and drawing, making puppets, creating stages for them, and putting on shows. His grandmother in NYC takes him to see shows like *Hansel and Gretel*, *The Lion King*, and *The Nutcracker*. Arthur is very excited to be part of this show.

**Alan R. White (Citizen of Oz, Jitterbug)** is happy to be returning to WFT, where he previously appeared in *Saint Joan* and *ANNIE*. Other recent roles include Laertes in *Hamlet* (Psyche), Sports Announcer in *The Well-Tempered Exposition* (Location One), Owen Adams in *Fishnet Networks.net* (Fishface), and Dwight in *Dead Man's Cell Phone* (Salem). Alan is a member of Theatre Espresso and performs multiple roles in the company's 5 show line-up. He has taught classes, workshops, and residencies partnered with WFT, CityStage, and VSA arts of Massachusetts.

**Caroline Workman (Munchkin Coroner)** is a 6th grader in Cambridge. She is delighted to be back on the WFT stage (*ANNIE*, *A Year with Frog and Toad*) after a nearly year-long run in *Billy Elliot* on Broadway as the small ballet girl swing. In addition to acting and singing, Caroline loves dancing and is trained in ballet, tap, jazz, modern, and hip-hop. With the Cambridge Youth Dance company she has performed at numerous venues; her favorites include BU Dance Theater, Fenway Park, and the Museum of Fine Arts. Caroline thanks Jane and Susan and everyone who is part of WFT and this production. There's no place like home.

**Christina Xiao (Munchkin)** enjoys being in the spotlight on stage. She has taken classes at WFT since she was 6, and has been seen in *The Little Mermaid* and *Aladdin*. Christina is also a famous singer in the Chinese community, and has performed many solos in Spring Festival events. She is a member of Boston Children's Chorus and a dancer with Boston Ballet. Christina is the MA State winner in the MTNA Composition Competition 2011 (elementary level). She lives with her family in Lexington, and enjoys reading and playing tennis in her spare time.

(continued on page 18)





**COF@15**

**Colleges of the Fenway  
Performing Arts Festival**

**Saturday, March 24, 2012**

**1:00 PM to 5:00 PM**

**Free and open to the public**



[www.colleges-fenway.org/performingarts](http://www.colleges-fenway.org/performingarts)

**15% Off photo products**

**Order in-store or online!  
at WABANPHOTO.COM**

**PHOTO PRODUCTS:**

- QUALITY PRINTING
- CALENDARS, CARDS
- BOOKS, SCANNING
- RESTORATIONS

**(617) 964-2161**

**WabanPhoto**

**at Frame It / Waban Gallery**

**1645 Beacon Street. Newton, MA 02468**

**[www.frameitwaban.com](http://www.frameitwaban.com)**

For online orders use code "15 off" at check out.  
Must present card for in-store savings. Cannot be  
combined with other offers. Expires 9/1/2012

(continued from page 17)

**Yarden Yacoby (*Munchkin*)** is a 6th grader at Oak Hill MS in Newton. She is a member of the PALS Children's Chorus and studies ballet, tap, and jazz at Joanne Langione's dance studio. She performed with the Freelance Players and at the summer camps of the Performing Arts at Park. Among the plays Yarden participated in are *Little Shop of Horrors*, *Monopoly*, *Buzz on*, *Fiddler on the Roof*, and *Tom Sawyer*.

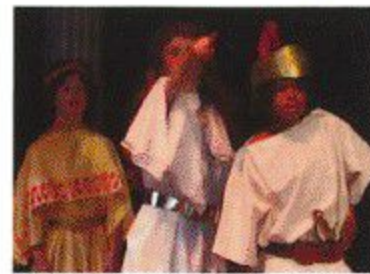
**Lisa Yuen (*Glinda*)** is pleased to be making her WFT debut! Broadway credits include ...*Spelling Bee* (original Broadway company) and *Miss Saigon* (Gigi). She has appeared in the national tours of *The King and I*, *Flower Drum Song*, *Scarlet Pimpernel*, and *Pirates of Penzance*. Off-Broadway Lisa has been seen with York Theatre and Second Stage, in over 40 regional productions (including MUNY, Sacramento Music Circus, PCLO, Theatre by the Sea, and Paper Mill Playhouse), and at Carnegie Hall and Lincoln Center. Lisa appeared in the Oliver Stone film *World Trade Center*. Her TV credits include Rachael on *All My Children* (23 episodes), Officer Spates on *Body of Proof*, *The Martha Stewart Show*, *As the World Turns*, and *The Today Show*. Boston credits include NSMT, New Rep, the Lyric, Foothills, Fiddlehead, and directing/teaching at BCT. Lisa earned her BA from UCLA. Love and gratitude to Mom, husband Kevin, and the 2 twin girls arriving in March!

**Remember:**

***please turn off all cell phones and  
electronic devices during the performance.***

# FENN

*Where Boys Thrive*



The Fenn School is dedicated to meeting the academic, athletic, artistic and social needs of boys grades 4-9 as they grow from children to young adults.

"Diversity is a state of mind at Fenn. We start from the idea of inclusivity and emphasize respect and safety for all and having an open mind. Within this lies the opportunity for learning about ourselves, each other, and the ever-changing world."

Tete Cobblah  
Director of Diversity  
Visual Arts Coordinator

Transportation and financial aid available. Please call to arrange a private tour.

516 Monument Street, Concord, MA 01742

978.369.5800 [www.fenn.org](http://www.fenn.org)

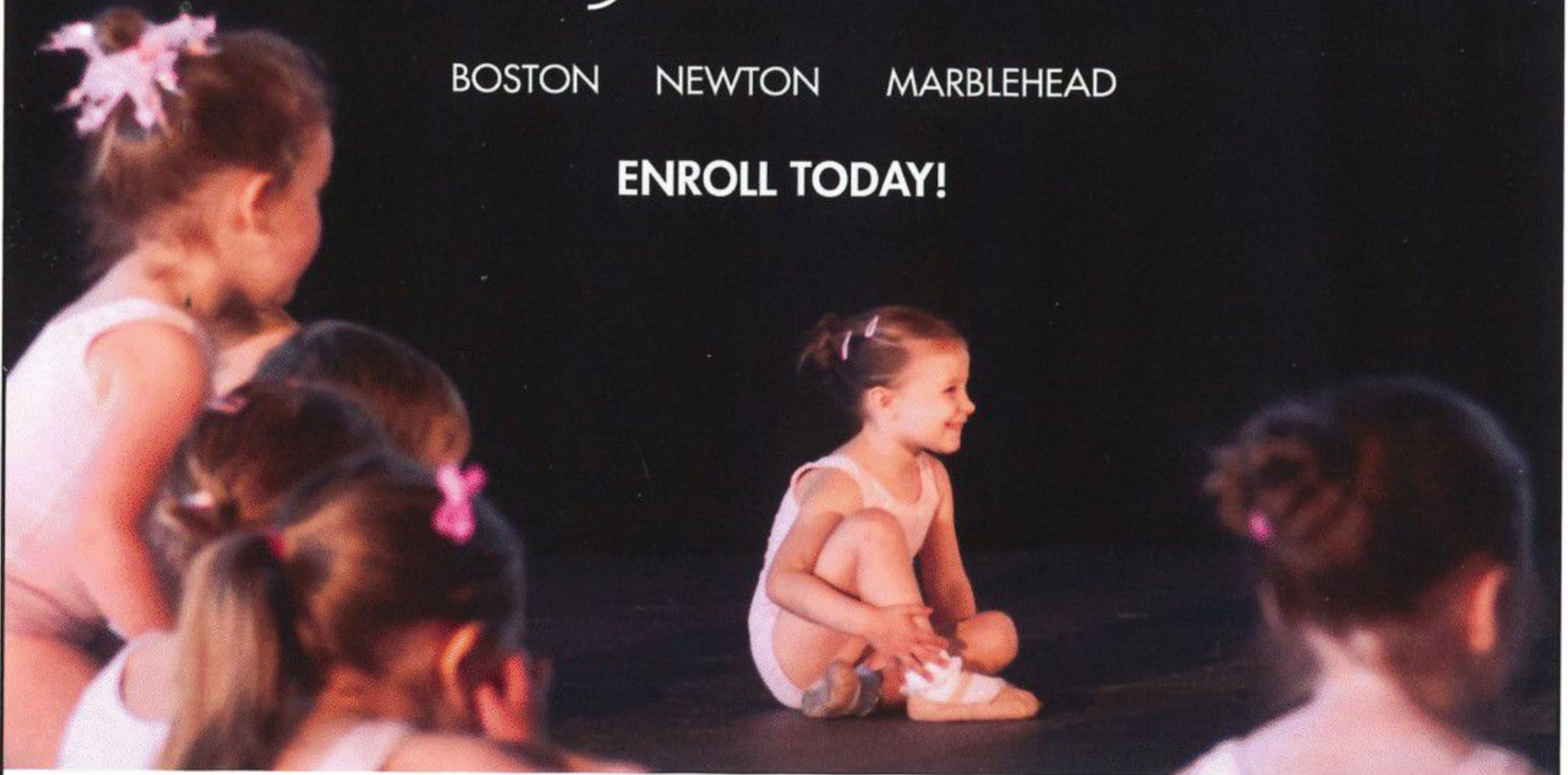




# BOSTONBALLET SCHOOL

BOSTON NEWTON MARBLEHEAD

**ENROLL TODAY!**



Experience the difference at Boston Ballet School: expert faculty, live music, a comprehensive curriculum, explore ballet and the wider world of dance in our beautiful state-of-the-art facilities.

Ages 2-Adult • Beginners Welcome • 617.456.6333

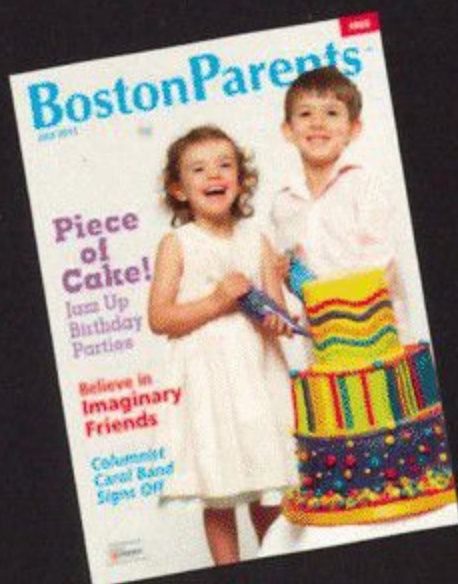
[www.bostonballet.org/school](http://www.bostonballet.org/school)

Official School of  
BOSTONBALLET

Photo by Liza Voll

# BostonParents PAPER

Wishing Wheelock Family Theatre another successful year!  
Pick up a Boston Parents Paper monthly or visit us online at  
[www.bostonparentspaper.com](http://www.bostonparentspaper.com)



**ENJOY THE SHOW!**





**We're proud to support the voices of our community.**

When community members speak about supporting the arts, we respond to their call for making the possible actual. Valuing artistic diversity within our neighborhoods helps to unite communities, creating shared experiences and inspiring excellence.

Bank of America is proud to support Wheelock Family Theatre for its leadership in creating a successful forum for artistic expression.

Visit us at [bankofamerica.com](http://bankofamerica.com)

**Bank of America** 