

WHEELLOCK
FAMILY
THEATRE

Anne of Green Gables



**October 19 -
November 18**



Friday, November 16 at 7:30 & Sunday, November 18 at 3:00

Join us when WGBH arts reporter Jared Bowen interviews playwright David Henry Hwang at WFT on Sat. December 8!

JARED BOWEN IS

CAUGHT IN THE ACT

It's hard to keep up with Jared.

He's always checking out the latest in Boston theater, music, art and movies. Luckily, he loves to talk about it.

Catch him weekdays on TV's *Greater Boston*, Thursdays on 89.7 during *Morning Edition* and *The Emily Rooney Show* or on Twitter at @JaredWGBH

WGBH

October/November 2012

Dear Theatre-goer,

Welcome to the Wheelock Family Theatre and to the opening production of our 32nd season, the musical *Anne of Green Gables*, based on L.M. Montgomery's classic novel. Anne, a high-spirited, imaginative orphan girl, continues to inspire and delight audiences around the world. The musical version of *Anne of Green Gables* was first staged at the Charlottetown Festival on Prince Edward Island in 1965. An immediate hit, it has been revived each year since its debut and has been produced in London, on Broadway, and in Japan.

On behalf of the Theatre, I would like to invite you to the following events that will enhance your family's experience of the performance:

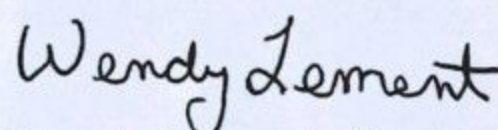
- Friday Workshops – before every Friday evening performance
- Tour from The Seats – after every Saturday matinee
- WFT Red Carpet – meet the actors after every Sunday matinee

I look forward to seeing you at one – or all – of these events and at our upcoming productions. Co-Founder Susan Kosoff returns to WFT to direct *Oliver!*, the musical version of Charles Dickens' timeless novel. Our season closes with a rollicking production of *Pippi Longstocking*, based on Astrid Lindgren's beloved story of the world's strongest girl.

I am thrilled to report that WFT's Education Program is thriving, with new classes and community outreach initiatives. With support from the Susan Kosoff Legacy Fund, WFT is launching an **Emerging Playwrights Program** for students in the Boston Public Schools to help young people express themselves through this exciting, but often-overlooked medium. **Theatre Espresso**, celebrating its 20th season this year, is now in residence at Wheelock Family Theatre. This NEA award-winning company tours to schools, museums, and courthouses with interactive, historical plays that shed light on current issues of racism, social justice, and the law. Theatre Espresso shares WFT's commitment to presenting high-quality plays that not only entertain, but also challenge us to view the world through multiple perspectives.

Whether this is your first, 15th, or 40th time here, you will be pleased to know that WFT's long-standing tradition of inclusion and diversity, in all its richness, remains central to our mission. It is truly an honor to join the talented artists and staff of Boston's only professional theatre dedicated to producing affordable productions for the whole family that feature multi-generational and multicultural casts. Live theatre plays a vital role in building community and transforming lives.

Sincerely,



Wendy Lement, Producer

WHEELOCK FAMILY THEATRE CONTACTS

Tickets and Subscriptions	617.879.2300	tickets@wheelock.edu
Classes	617.879.2252	jbay@wheelock.edu
Castings	617.879.2235	jstaab@wheelock.edu
Donations	617.879.2252	kelliott@wheelock.edu
Volunteer Opportunities	617.879.2147	cbaldwin@wheelock.edu
Theatre Espresso	617.879.2148	sbolman@wheelock.edu

Mail:

200 The Riverway
Boston, MA
02215-4176

Web:

www.wheelockfamilytheatre.org



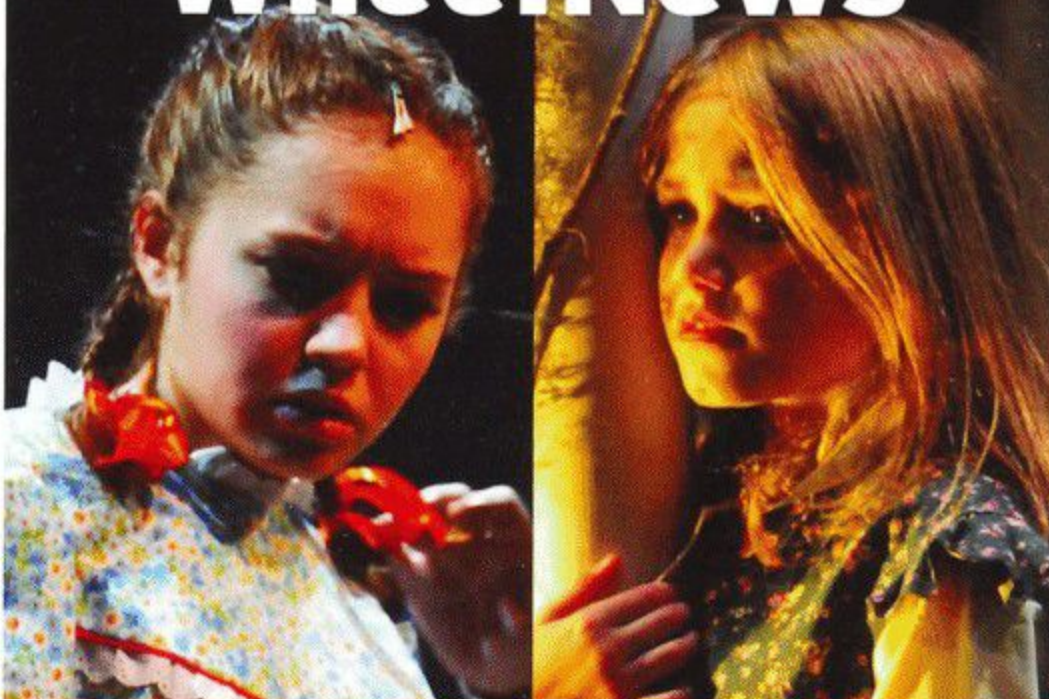
UNDERGRADUATE & GRADUATE
DEGREES IN EDUCATION, SOCIAL
WORK, ORGANIZATIONAL
LEADERSHIP, & LIBERAL ARTS

WHEELOCK
COLLEGE

For more info: wheelock.edu

For backstage photos and
cast interviews, check out
the Wheelock Family Theatre blog:

Whee!News



Equity actors pictured: Katherine Leigh Doherty, Michael Wood



Sirena Abalian (Ruby Gillis), a resident of Lexington, was recognized with an IRNE award (Most Promising Performance by a Child Actor) for her role as Jojo in WFT's *Seussical*. Other WFT credits include Grammy in *Lilly's Purple Plastic Purse*, Roo in *Winnie-the-Pooh*, an Oompa Loompa in *Charlie and the Chocolate Factory*, and the Commercial Girl in *Ramona Quimby*. Sirena has performed as Clara in *Nutcracker* (IRNE nomination for Best Young Actor) (the Stoneham); Belle in *Beauty and the Beast*; young Eponine/young Cosette in *Les Misérables*; and Lola in *13*. Other local credits include Lee Bouvier in *Grey Gardens* (Arlington Friends of the Drama) and Fern in *Charlotte's Web* (BCT). Sirena has also done a radio ad for the Department of Health. Thanks to the amazing cast and crew, and to her lovely family for their endless support!

Bernie Baldassaro (Gerry Buote) is making his WFT debut! His regional credits include *Cinderella '05-'06*, *Singin' in the Rain* (Young Don), and Disney's *High School Musical 2* with NSMT; *I Capture the Castle* (Thomas Mortmain) with the Stoneham, and *Columbinus* (Prep) produced by the Huntington. Some favorite credits include *13* (Brett) and *Zanna, Don't!* (Zanna) with the Stoneham's Young Co.; *Spring Awakening* (Otto) and *Hairspray* (Fender) with Marblehead Little Theatre; and many productions with NSMT's YPA. He represented the Stoneham at the 2011 Boston Theatre Marathon in *Little Boys* (Adam). Bernie received three acting awards for his portrayal of Jaime in *Alchemy of Desire/Dead Man's Blues* at the 2012 METG Drama Festival, where his cast was named State Champions. He also teaches dance and acting to students in grades 1-3 at the Stoneham. A special shout out to the amazing production team for the opportunity, his incredible friends, and his supportive family!

Susan Bigger (Mrs. Spencer) is delighted to be back at Wheelock after a long hiatus. She was seen here long ago in *Snow White and the Seven Dwarfs*, *Charlie and the Chocolate Factory*, and, of course, *The Good Times are Killing Me*, with Kevin Belanger, her favorite traveling companion.

Kevin Bradley, Jr. (Stationmaster) has worked as an actor, director, and teacher throughout NYC. He is a graduate of the University of Michigan Department of Theatre and Drama and the British Academy of Dramatic Arts. Most recently he performed in *Ragtime* at the Strand. He also had the opportunity to perform in NYC's 2011 Coil Festival in *Green Eyes* by Tennessee Williams. Other credits include *Hairspray*, *Once on this' Island*, *Side Show*, *Good Christian, Fame*, *The Nutcracker*, *The Laramie Project*, *To Kill a Mockingbird*, and *Measure for Measure*. In 2009 Kevin was assistant director at the Huntington and became a member of the Stage Directors and Choreographers Foundation.

Tess Brenner (Mrs. Sloane) is thrilled to be back with the Wheelock family for some Gables glory. She most recently appeared in the premiere NY workshop of the new play *Iris* by Emma Wagner. Some of her favorite roles include Viola in *Twelfth Night*, Rosalind in *Shakespeare in Love* (Commonwealth Shakespeare), Annie in *Annie Get Your Gun*, and Tribe/Mother in *Hair*. Tess is also the Jr. Board Executive and Outreach Associate for the NY-based Shakespeare's Sister Company. She is a proud graduate of the Boston Conservatory.

Valerie C.M. Ching (Primary Audio Describer) is thrilled to be working with her good friend Elizabeth Montigny again, having just collaborated with her on the description for *Good People* at the Huntington. Other WFT description credits include primary describer for *The Wizard of Oz* and *The Phantom Tollbooth* and secondary describer for *The Secret Garden*, *Honk!*, *Seussical*, *Beauty and the Beast*, *Lilly's Purple Plastic Purse*, *Tuck Everlasting*, *Inherit the Wind*, and *The Sound of Music*.

Scott Clyve (Lighting Designer) is ecstatic to return to WFT after designing *The Miracle Worker*, *Honk!*, *Saint Joan*, and *Lilly's Purple Plastic Purse*. Some highlights of his work include, in Boston: *Kong's Night Out*, *Man of La Mancha* (2007 IRNE), and *1776* (the Lyric); *The Women and The Mystery of Edwin Drood* (SpeakEasy); *Design for Living* (the Publick); *Urban Nutcracker* (BalletRox); *Express Yourself '07-'08* (the Wang); and *City Spotlights* (the Shubert). In NY, Scott designed the Broadway show *The Gathering* starring Hal Linden. Off Broadway: *I Love My Wife*, *Syndrome*, and *The Winter's Tale*. Broadway National Tours: *Your Arms Too Short to Box with God*. National Tours: *Song of Singapore*, *Dance Across America*, and *Scrooge the Musical*. Opera: *La Traviata*, *The Barber of Seville*, *The Marriage of Figaro*, and *The Merry Widow* (Syracuse Opera). TV: *Gospel Superfest 2008* and various shows on CNN. Scott is a graduate of Purchase College at SUNY. www.sclightingdesigns.com

Laurel Conrad (Choreographer) is honored to be returning for her 10th year and 11th season at WFT—where she has had the fortune to choreograph all of WFT's musicals and, occasionally, to perform. Her work here has earned her two IRNE Awards for Best Choreography for *Seussical* and *Will Rogers Follies*. Love to Jane and Sue to whom she is very grateful for the incredible chance to work with an amazing theatre company and wonderful people, creating a second family for her. Also, much love to Molly, Nyssa, and the love of her life, Mario, for their support and encouragement. xoxo

Ryan Cook (Tommy Sloane) is a freshman at Brookline High. He saw his first WFT show at the age of six and is thrilled to be onstage in *Anne of Green Gables*. Ryan's other credits include WFT (*The Phantom Tollbooth*), Turtle Lane (*Big*), the Footlight Club (*Willy Wonka, Oliver!*), BCT (*Frog and Toad*), and Next Door Theatre (13).

Steven Cosnek (Charlie Sloane), a Pittsburgh native, completed his MFA in musical theatre at the Boston Conservatory in May. This summer he participated in Commonwealth Shakespeare's Apprentice Program and was a member of the *Coriolanus* cast seen on the Boston Common. While attending graduate school, Steven performed numerous roles, including Autolycus in Shakespeare's *The Winter's Tale*, Frolo in Disney's *The Hunchback of Notre Dame*, and Overseer in the premiere of the musical *Factory Girls*. Other favorite roles include Pirelli in *Sweeney Todd* and Lamar in *Godspell*. He spent two summers performing at the Huron Playhouse and covered the roles of Charlie in *Brigadoon* and B.J. Gibson in *The 1940's Radio Hour*. He holds a BFA in vocal performance from the Indiana University of PA. He sings regularly with the choir of Beacon Hill's Church of the Advent; you can also see him perform his one-man cabaret, *Help Wanted: Inquire Within*, around Boston. Steven thanks his family and Matthew for their support.

David W. Frank (Minister) has appeared in many productions over many years in the Boston area. Most recently he played Puppy and James (another minister) in the Vokes production of *The Vow of the Prairie*. Past credits here include *I Remember Mama* (Mr. Thorkelson), *Mr. Popper's Penguins* (policeman), and *Inherit the Wind* (Bannister). Other favorite roles include Chief in *Gasping* (Theatre on Fire) and Artie in *The House of Blue Leaves* (Hovey).

Lindsay D. Garofalo (Production Stage Manager) is very excited to be returning to WFT for her 5th season as stage manager. Some of her favorite shows that she has been a part of are *Les Misérables*, *Seussical*, *Hedda Gabler*, *Romeo and Juliet*, *The Sound of Music*, *Noises Off*, *Macbeth*, *Honk!*, and *Living Out*. During the day, Lindsay is a Kindergarten SEI teacher at Graham and Parks School. A big thank you to her family for always supporting her, and to Dan for always keeping her calm.

Trey Gaskin (Malcolm Andrews) is thrilled to return to WFT, having last been seen here as Young AzAz in *The Phantom Tollbooth*. Other WFT credits include *Charlotte's Web*, *Honk!*, and *The Little Mermaid*. Trey enjoyed participating in WFT's Story Troupers and Advanced Performance Intensive last summer. Many thanks to Jane.



Boston Trust & Investment
Management Company



Walden Asset Management
Advancing sustainable business practices since 1975

Cheers to your 2012-2013 season!

Boston Trust & Investment Management Company
One Beacon Street | Boston, Massachusetts 02108 | 617.726.7250 | fax: 617.227.2690

WHO's WHO (continued from page 5)

Jennifer Beth Glick (Anne Shirley) made her professional stage debut at the age of ten in the ill-fated sequel to *Annie*, *Annie 2: Miss Hannigan's Revenge*, at the Kennedy Center. She is thrilled to return to her roots (Canadian, Wheelockian, and auburn) as another red-headed orphan named Anne. As an undergraduate at Harvard, Jennifer sang with the Radcliffe Pitches and performed with the HRDC in productions such as *Ruthless!* (Tina) and *Anything Goes* (Hope). Prior to attending UVA Law School, Jennifer played the roles of Bielke and Grandma Tzeitel in the national touring production of *Fiddler on the Roof* starring Theodore Bikel. At WFT, Jennifer is perhaps best known for her portrayal of Gertrude McFuzz in *Seussical*, for which she won an IRNE Award. She also appeared here as Wendy in *Peter Pan*, Sara Crewe in *A Little Princess*, and Mary and Martha in *The Secret Garden*. Regionally, she has been seen as Kim in *Miss Saigon* and Ado Annie in *Oklahoma!* (Company), Edna Arkins in *The Good Times Are Killing Me* (SpeakEasy and WFT), Little Red Ridinghood in *Into the Woods* (Worcester Forum), and June in *Gypsy* (the Publick). Most recently, Jennifer had the privilege of working with conductor Kurt Bestor and the Cape Cod Symphony Orchestra as the lead soloist in their Pops concert. Combining her musical and legal advocacy backgrounds, Jennifer recorded and produced a children's CD, *Musicals for Munchkins*, featuring a collection of kid-friendly show-tunes, to benefit Boston's Home for Little Wanderers. For more info, please visit: www.jenniferbethglick.com.

Kippy Goldfarb (Mrs. Blewett) is very happy to return to WFT, where she has been seen as Miss Maudie in *To Kill a Mockingbird*, Mrs. Gibbs in *Our Town*, and Goodie Gish in *The Witch of Blackbird Pond*. Last year, she appeared as Emily in *Before I Leave You* at the Huntington. She has performed a wide range of characters, including Vivian Bearing (*Wit*), Regina (*Little Foxes*), Linda Loman (*Death of a Salesman*), and Sharon (*Book of Days*) with many NE theatres, including WHAT, Worcester Foothills, Cambridge Theatre Company, the Lyric, Vineyard Playhouse, and the Nora. Kippy has performed at Papermill Playhouse and San Diego Rep, and internationally on stages in Ireland, Russia, and France. She is particularly interested in role-playing for lawyers and doctors (Harvard Medical School, Children's Hospital, Suffolk Law, MCLE). When not acting, Kippy photographs professionally.

Kaedon Gray (Earl, the mailman), primarily an R&B/pop singer/vocalist, is happy to return to the Wheelock stage for a second production. He was last seen here earlier this year in *The Wizard of Oz* (Ensemble). Other regional productions include *Once on this Island* (Father, Armand), *Violet* (Flick), *A Chorus Line* (Richie), *Ragtime* (Ensemble), and *Dearly Departed* (Royce). More info at soundcloud.com/kaedon-gray.

Tori Heinlein (Tilly Boulter) has appeared on Broadway in *White Christmas* (Susan Waverly) at the Marquis. Regional credits include *Annie* (title role) at the Media Theatre in Philadelphia, *A Christmas Carol* (Ghost of Christmas Past, Belinda) at the Hanover, *Gypsy* (Blue June), *Annie* (Molly),



TheatreEspresso
WAKE UP TO HISTORY!

Now in Residence at Wheelock Family Theatre!

Theatre Espresso uses interactive theatre to teach young people to think critically and to promote civic dialogue. Our historical dramas empower students to explore the parallels between historical events and contemporary issues. By putting students in role as Supreme Court Justices, state senators, or members of a jury, we invite them to question the characters and debate issues raised by our plays. We practice non-traditional casting in terms of race and gender to reflect our diverse audiences. We tour the following plays to schools, museums, and courthouses: *Uprising on King Street: The Boston Massacre*, *The Trial of Anthony Burns*, *American Tapestry: Immigrant Children of the Bread and Roses Strike*, *Justice at War: The Story of the Japanese Internment Camps*, and *The Nine Who Dared: Crisis at Little Rock*.

To bring one of our programs to your school or to learn more: contact Shelley Bolman, Managing Director, at 617.879.2148 or sbolman@wheelock.edu, or visit our website at www.TheatreEspresso.org



Beauty and the Beast (Chip), and *FOB*. Tori's film work includes *Peoria* (Sophie), *Heartbeats* (Olivia), and *Big Shot* (Meredith). A big hug to Jane and the whole fabulous cast and crew. Special thanks to D. Jabara, family, and friends for always being there.

Bradley Jensen (*Gilbert Blythe*) is a recent graduate of Boston College's Lynch School of Education and hopes to be a high school English teacher in the near future. "Call me maybe!" Most recently he played the role of Mike Costa in *A Chorus Line* (the Reagle). Favorite roles include Hot Blades Harry in *Urinetown*, the Scarecrow in *The Wizard of Oz*, and John Brooke in *Little Women* (all at UNH). Brad is also a choreographer, director, and educator, working primarily with the Stoneham's Young Company. Thanks to his family, friends, and Jane for believing in him. Most importantly, thanks to Andrew Barbato and Brittany Rolfs for introducing him to WFT—a wonderful place to imagine and create beautiful theatre for all ages.

Carly Kastel (*Prissy Andrews*) is stoked to be making her WFT debut with this talented cast and crew. Her regional credits include *Bard Over Broadway* (Commonwealth Shakespeare), *Weaver of Raveloe* (NYMF), *Greased* (Mystery Cafe), *Tonya and Nancy: A Rock Opera* (Harborside Films), and *Bat Boy* (Metro Stage). Carly earned a BFA from the Boston Conservatory. Thanks to everyone for making this happen!

Maureen Keiller (*Rachel Lynde*) is so happy to be returning to WFT, where she was seen in *Ramona Quimby* and *Pippi Longstocking*. Her regional credits include *The Little Dog Laughed* (Hartford Theatre Works). Locally, she has appeared in *Car Talk: The Musical!!!* (Central Square); *Big River*, *The Life and Adventures of Nicholas Nickleby* (Elliot Norton and IRNE Awards, Best Play, midsize), *Speech and Debate* (Elliot Norton, Best Play, midsize), *Epic Proportions*, and *Inspecting Carol* (the Lyric); *Nine*, *The Little Dog Laughed*, *The Women* (IRNE Award, Supporting Actress), *Almost, Maine*, and *The Wild Party* (IRNE Award, Supporting Actress) (SpeakEasy); *The Sweetest Swing in Baseball* (Boston Theatre Works); *A Streetcar Named Desire* (New Rep); and *Frankie and Johnny in the Clair de Lune* (IRNE Award) (Lyric West). On the big screen, Maureen has appeared in *Fever Pitch*, *We Pedal Uphill*, and *My Best Friend's Girl*; she is currently filming *The Makeover* starring Julia Stiles for the Hallmark Channel. TV credits include *Brotherhood* (Showtime series) and *We Made America* (WGBH). Thanks to the spirit of Patrick Droney, who gave his joy, his passion for life, and his love to his daughter.

Matthew T. Lazure (*Set Designer*) has designed sets for Gloucester Stage (*Carnival*); KidStage at the Boston Children's Museum (*It's All in the Cycle*); the Gold Dust Orphans (*Medea*, *All About Christmas Eve*, and *Peter Pansy*); Provincetown Theatre (*Santaland Diaries*); and Pee Wee Players of Provincetown (*The Alp-solutely Amazing Adventures of Heidi* and *Alice in Wonderland*, *A Musical Curiosity*). His set designs for WFT include *The Phantom Tollbooth*, *Honk!*, *Lilly's Purple Plastic Purse*, *Charlotte's Web*, and *The Secret Garden* (Elliot Norton nomination). Matthew's costume designs have been seen on the WFT stage in *Beauty and the Beast*, *Peter Pan*, *Saint Joan*, and *Snow White* (IRNE nomination). A Mass College of Art graduate, he shows his fine art in Boston, Provincetown, and online at matthewlazure.com.

Marjorie Lusignan (*Props Designer*), a native of RI, is happy to be back for a 5th season at WFT. She continues to create things beyond her wildest expectations and to share her skills and talents with young people as a member of WFT's Education Program faculty.

(continued on page 8)



confidence
creativity
collaboration

A community that values academic, social, and emotional growth equally.



Pre-K – Grade 6

69 Grove St., Watertown, MA
617-923-4156 | atrium.org



Carolle Photography

Photography for the Performing Arts

headshots • productions • events • CDs • portraits

Kippy Goldfarb

617.946.4664 carollephoto@aol.com

**Dave's
AUTO REPAIR**

"Proud to keep the Family Driving"

- Complete Auto Repair
- Inspection Stickers
- Towing Services
- Transmissions
- Suspensions

All Service is Guaranteed

880 Commonwealth Ave (rear)
617-739-3100 617-566-2235

BEST WISHES and CONTINUED SUCCESS

from

**LILLIAN GONZALEZ,
CPA, MST, CSEP**

14 Page Terrace
Stoughton, MA 02072
(781) 344-1040
FAX (781) 344-4449
www.go-cpas.com

CERTIFIED PUBLIC ACCOUNTANTS

- ACCOUNTING
 - AUDITING
 - TAXES
- FINANCIAL PLANNING
- RETIREMENT PLANNING
 - ESTATE PLANNING

WHO's WHO (continued from page 7)

Elizabeth Montigny (Secondary Audio Describer) received her training as an audio describer from the Bay State Council of the Blind and Cultural Access Consortium. She is happy to work with Valerie again after teaming up on *Good People* last month at the Huntington. Other recent credits include the Huntington's *All My Sons and Pirates!* Liz is also a virtual assistant and a local actress. Please visit her website, agoodremedy.com, for more information about her services and creative projects.

Kharimah I. Muhammad (Sally MacPherson), a 9th grader at a Boston charter school, plays the guitar and will begin Flamenco dance classes soon. She has been acting since elementary school and has appeared in two other WFT musicals, school plays, and Footlight Club productions. Kharimah's goal is to pursue what she loves to do most—dancing and acting!!

Grace Napier (Mrs. Barry) has been featured in numerous WFT shows, from classic musicals such as *Carousel*, *The King and I*, *The Secret Garden*, *The Music Man*, *Cinderella*, *Fiddler on the Roof*, *Hello, Dolly!*, and *Peter Pan*, to family plays such as *Little Women*, *Winnie-the-Pooh*, and *Aladdin*. She also directed WFT's IRNE Award-winning 2009 production of *Seussical*. Other professional credits include the US/Canadian tour of *The King and I* (Rudolf Nureyev) and Trinity Rep's *A Christmas Carol* (Stacy Keach). A graduate of MIT, Grace is a member of Actor's Equity and WFT's Education Program faculty, directing the acclaimed Story Troupers as well as workshops with Boston Lyric Opera. Much love always to her kindred spirits, Bill and Christina!

Joseph Nedder (Moody MacPherson) is excited to be returning to Wheelock, after playing Scott in WFT's Summer Intensive production of *Dear Edwina Jr.* He also appeared as Milo's friend in last fall's production of *The Phantom Tollbooth* on the WFT main stage. Other favorite roles include Dodger in *Oliver!* with Wellesley Players, Colin in *The Secret Garden* with Longwood Players, Mike Teavee in *Willy Wonka* with the Footlight Club, and Wilson in *Lilly's Purple Plastic Purse* with BCT. Joseph is an avid musician and enjoys playing piano, bass, guitar, drums, and trombone.

Adrianna Neefus (ASL Interpreter) is making her WFT debut. Her theatrical credits include work with the Boston Landmark Orchestra. She received her degree in interpreting from UNH in Manchester. In addition to interpreting, Adrianna works as an assistant teacher at the Beverly School for the Deaf.

Gary Thomas Ng (Cecil, the farmer) is excited to return to Avonlea, having appeared in WFT's 2000 production of *Anne of Green Gables*. Recent WFT credits include *Annie* (Drake), *Honk!* (Barnacles/Turkey), *Seussical* (Mayor), *Lilly's Purple Plastic Purse* (Baby Julius), *Peter Pan* (Smee), and *Beauty and the Beast* (LeFou). Other favorite credits include *Miss Saigon* at the Ogunquit Playhouse and *Miss Saigon* at Worcester Foothills, where he understudied and performed the role of The Engineer; *Children of Eden* starring Stephanie Mills and Adrian Zmed (NSMT); *Sideshow* (the Lyric); *Grease!*, *Joseph . . . Dreamcoat*, and *Footloose* (Ogunquit); Paul in *A Chorus Line*; Jacob in *La Cage Aux Folles*; and the Far East tour of Cole Porter's *Aladdin*. Gary is also a photographer whose works include production photos for the Ogunquit Playhouse, Gloucester Stage, and WFT.

Jacqui Parker (Marilla Cuthbert), an award-winning actor, director, and playwright, is thrilled to be back at WFT and working with such amazing talents. Acting credits include Sicinius in *Coriolanus* (Commonwealth Shakespeare),

Shakespeare), Billie Holiday in *Lady Day at Emerson's Bar and Grill* (the Lyric), and Elizabeth in *Old Settler* (Elliot Norton Award). She was also seen as Mrs. Keckley and Mrs. Thomas in *A Civil War Christmas* (IRNE, Best Supporting Actress) and Mother in *Breath Boom* (IRNE) (the Huntington); May N'Kame in *Going to St. Ives* and Cashier in *Ponies* (Gloucester Stage); Banquo in *Macbeth* (Actors Shakespeare); Caroline in *Caroline, or Change* (IRNE) and Inez in *Our Lady of 121st Street* (SpeakEasy); *Hamlet* and *Much Ado About Nothing* (Commonwealth Shakespeare); Angel in *Blues for an Alabama Sky*, *Ascension*, *Spunk*, and *From the Mississippi Delta* (Our Place); Lucy Parsons in *Haymarket* (Boston Playwrights'); Vivian in *A Lesson Before Dying* and Dr. Bessie Delaney in *Having Our Say* (New Rep); ACT Roxbury's *City Preacher*; *Rebecca of Sunnybrook Farm*, *The Jungle Book*, and *The Tempest* (WFT); and *Pictures at an Exhibition* (IRNE) (CenterStage). Jacqui's directing credits include *Once on this Island*, *12 Angry Jurors*, *The Miracle Worker*, and *Twilight Los Angeles* (ENC) and *The Life* (IRNE nomination, Best Director). Jacqui is the founder of the annual African American Theatre Festival, which showcases the works of playwrights—past, present, and up and coming—directors, and actors. Film credits include *Company Retreat*, *Turntable*, and *Lift*. She recently completed her Playwriting Fellowship at the Huntington; her play *Dark as a Thousand Midnights* earned an IRNE Award for Best New Play. Jacqui received the Boston Theatre Hero Award (StageSource) and the Drylongso Award (Community Change) for her role in the struggle against racism.

Gamalia Pharms (Mrs. Pye) is delighted to be a part of this amazing cast! Last seen in *The Wizard of Oz*, she counts among her favorite WFT shows *Honk!*; *Seussical*; *Beauty and the Beast*; *The Sound of Music*; *Hello, Dolly!*; *Beanstalk*; *Trumpet of the Swan*; and *The Good Times Are Killing Me*. Gamalia has performed in regional theatres up and down the East Coast, and has a BFA from Boston Conservatory of Music. Much love and thanks to Jane and the entire marvelous WFT staff and crew! A shout out to Mass College of Art and Design, her second home!

Robert L. Rucinski (Music Director) is very excited to return to WFT after working on *The Phantom Tollbooth* last season. He is a freelance music director, pianist, and conductor active with many theatres and school programs throughout the region. He has collaborated on numerous NSMT productions, including *A Christmas Carol*, *Crazy for You*, *Cinderella*, *Seven Brides for Seven Brothers*, and *Damn Yankees*. Robert has also worked with Seacoast Rep (Portsmouth, NH), the Palace Theater (Manchester, NH), the Reagle (Waltham), the Papermill (Lincoln, NH), and BCT. Originally from Jersey City, NJ, Robert currently lives in Arlington.

Lexi Ryan (Gertie Pye) is thrilled to be back on the Wheelock stage! A freshman at the Advanced Math and Science Academy, she has been seen in WFT's productions of *Annie* (Orphan Irene), *The Little Mermaid* (Water Puppeteer), and *Seussical* (Cadet/Cindy Lou). Other local credits include *A Christmas Story* (Esther Jane) at New Rep, three seasons of *A Christmas Carol* (Ghost of Christmas Past) at the Hanover, and *The Secret Garden* (Mary Lennox) at Turtle Lane. Lexi is in her fourth season with The Friends of Broadway performing troupe, which has toured to Walt Disney World and performed aboard Royal Caribbean's Majesty of the Seas cruise ship. She was in the children's chorus on Stevesongs (PBS's Mr. Steve) *Marvelous Day* CD (Rounder Records) and performed in concert with him throughout MA, in NYC, and at the Kennedy Center in Washington, DC. Lexi is the 2009 winner of the TAMY Rising Star Award for her performance as Young Cosette in *Les Misérables*.

(continued on page 17)



GEORGE W. BLAISDELL INSURANCE BROKER

The Governor's Mansion

P.O. Box 644 Hampton Falls, NH 03844

TOLL FREE 800-882-8535

Providing both buyers and sellers with the highest quality professional real estate brokerage services available.

Chobee
Hoy associates



18 Harvard Street
Brookline, Massachusetts
02445

617 739 0067

ROFFI SALON & DAY SPA

The curly hair expert in Boston
Ouidad Certified

134 Newbury Boston 02116 michaelroffi.com

Anne of Green Gables

A MUSICAL

Adapted by Donald Harron Music by Norman Campbell

From the Novel by L.M. Montgomery

Lyrics by Donald Harron and Norman Campbell

Additional Lyrics by Mavor Moore and Elaine Campbell

MUSICAL DIRECTOR
Robert L. Rucinski

DIRECTOR
Jane Staab

CHOREOGRAPHER
Laurel Conrad

COSTUME DESIGNER
Lisa Simpson

SET DESIGNER
Matthew T. Lazure

LIGHTING DESIGNER
Scott Clyde

PROPS DESIGNER
Marjorie Lusignan

PRODUCTION STAGE MANAGER
Lindsay D. Garofalo*

AUDIO DESCRIBERS
Valerie C.M. Ching, Elizabeth Montigny

ASL INTERPRETERS
Adrianna Neefus, Desiree Weems

THE CAST

Anne Shirley	Jennifer Beth Glick*
Matthew Cuthbert	Robert Saoud*
Marilla Cuthbert	Jacqui Parker*
Mrs. Rachel Lynde	Maureen Keiller*
Gilbert Blythe	Bradley Jensen
Diana Barry	Jenna Lea Scott*
Josie Pye	Kaitee Tredway
Miss Stacy	Ceit M. Zweil
Mrs. Pye	Gamalia Pharms*
Mrs. Barry	Grace Napier*
Mrs. MacPherson	Kerri Wilson-Ellenberger
Mrs. Sloane	Tess Brenner
Mrs. Spencer	Susan Bigger
Mrs. Blewett	Kippy Goldfarb*
Mr. Phillips	Nick Sulfaro
Stationmaster	Kevin Bradley, Jr.
Minister	David W. Frank
Cecil, the farmer	Gary Thomas Ng*
Earl, the mailman	Kaedon Gray
Prissy Andrews	Carly Kastel
Molly Spencer	Emily Sheeran
Tillie Boulter	Tori Heinlein*
Ruby Gillis	Sirena Abalian
Gertie Pye	Lexi Ryan
Charlie Sloane	Steven Cosnek
Tommy Sloane	Ryan Cook
Moody MacPherson	Joseph Nedder
Sally MacPherson	Kharimah I. Muhammad
Gerry Buote	Bernie Baldassaro
Malcolm Andrews	Trey Gaskin
Swings	Carrie Ruxin Shao, Cassie Ruyi Shao

Novel adapted by permission of the publishers, Farrar, Straus & Giroux, Inc. Originally commissioned and presented by the Charlottetown Festival, Canada. Produced by special arrangement with Samuel French, Inc.

There will be one 15-minute intermission between acts.

Ask the House Manager for individual sound enhancement devices.

The taking of photographs and use of recording devices is strictly forbidden.

Please turn off all electronic devices.

Please, no eating or drinking in the theatre.



*Member of Actors' Equity Association, the Union of Professional Actors and Stage Managers in the United States. The Wheelock Family Theatre is operating under the terms of a Developing Theatre's Program of Actors' Equity Association. The contract used is a Letter of Agreement.

MUSICAL PROGRAM

The story is set in Avonlea, a tiny village in Prince Edward Island, Canada's smallest province, at the turn of the twentieth century.

ACT ONE

Where Is Matthew Going?	Townspeople
Gee I'm Glad I'm No One Else But Me	Anne
We Clearly Requested	Marilla, Anne, and Matthew
The Facts	Anne, Mrs. Spencer, Mrs. Blewett, Marilla
Where'd Marilla Come From?	Townspeople
Humble Pie	Matthew and Anne
Oh Mrs. Lynde!	Anne
Back to School Ballet	Pupils
Avonlea, We Love Thee	Mr. Phillips and Pupils
Wondrin'	Gilbert
Did You Hear?	Josie and Townspeople
Ice Cream	Diana, Anne, and the Company

ACT TWO

Where Did the Summer Go To?	Pupils
Kindred Spirits	Anne and Diana
Open the Window!	Miss Stacy and Pupils
The Words	Matthew
Open the Window! (reprise)	Miss Stacy and Pupils
Nature Hunt Ballet	Miss Stacy and Pupils
I'll Show Him	Anne and Gilbert
General Store	Prissy, Matthew, and Townspeople
Pageant Song	Pupils
If It Hadn't Been for Me	The Company
Where Did the Summer Go To? (reprise)	The Company
Anne of Green Gables	Matthew
The Words (reprise)	Marilla
Wondrin' (reprise)	Anne and Gilbert

ORCHESTRA

Conductor/Keyboard: Robert L. Rucinski
 Reed I: Louis Toth Reed II: Myles Davis Horn: Meredith Gangler
 Violin: Chris Ledoux Cello: Laura Messina Percussion: Dana Cyr

Open captioning provided in collaboration with c2 (caption coalition) inc, www.c2net.org.



massculturalcouncil.org

Wheelock Family Theatre is a member of the American Alliance for Theatre and Education (AATE); ArtsBoston; the Consortium of Boston Area Children's Theatres (CBACT); Cultural Access New England (CANE); StageSource, the Alliance of Theatre Artists and Producers; and the Theatre Artists' Marketing Alliance (TAMA).



Wheelock Family Theatre

STAFF

Producer	Wendy Lement
Casting Director/Business Manager/ASM	Jane Staab*
Director of Education	John Bay
Publicity and Marketing Director	Charles G. Baldwin
Assistant Producer/Managing Director, Theatre Espresso	Shelley Bolman
Administrative Director	Kay Arden Elliott
Development Consultant	Janet Bailey
Assistant Director of Education	Lisa Rowe-Beddoe
Audience Engagement Coordinator	Marianne Adams
Access Coordinator	Judy Berk
Box Office Supervisor	Stephen Reinstein
Technical Director	Matthew T. Lazure
Production Manager	Brian Masters
Assistant Technical Director/Master Electrician	Craig A. Zemsky

PRODUCTION TEAM

Assistant to the Director	Nural Mohammed, Alexander Roy
Assistant to the Stage Manager	Robin Liberty
Props Mistress	Marjorie Lusignan
Costumer	Lisa Simpson
Assistant to the Costumer	Jennie Hudson-Bryant
Costume Shop Assistant	Hannah Smith
Stitchers	Mina Ha, Sarah Kershaw
ASL Consultant	Kristin Johnson
Captioning	Jamie Aznive, Janet Cagan-Teuber Ruth Kahn, Diana Kilguss
Audio Consultant	Dan Axe
Scenic Carpenters	Sonia Belkin, M. Doughty, Kat Nakaji, David Silber
Electricians	Lauren Audette, Oliva Brownlee, Meghan Crimmins, Fred Lazar, Ben Murray, Dylan Seo, Alix Strasnick, Julia Streeter

EDUCATION PROGRAM FACULTY

Kortney Adams, Esme Allen, Melissa Baroni, Dana Jay Bein, Christy Betit, Shelley Bolman, Danny Bolton, Jennifer Buller, Robin Connors, Laurel Conrad, Laura DeGiacomo, Andrea Doane, P.J. Durand, Donna Folan, Ellie Friedland, Jeri Hammond, Angela Harvey, Brenda Huggins, Hannah Husband, Angie Jepson, Kristin Johnson, Marjorie Lusignan, Brett Marks, Brian Masters, Yvonne Murphy, Grace Napier, John O'Neil, Kirsten Opstad, Sophie Rich, Ilyse Robbins, M. Lynda Robinson, Rita Thompson, Fran Weinberg, Alan White

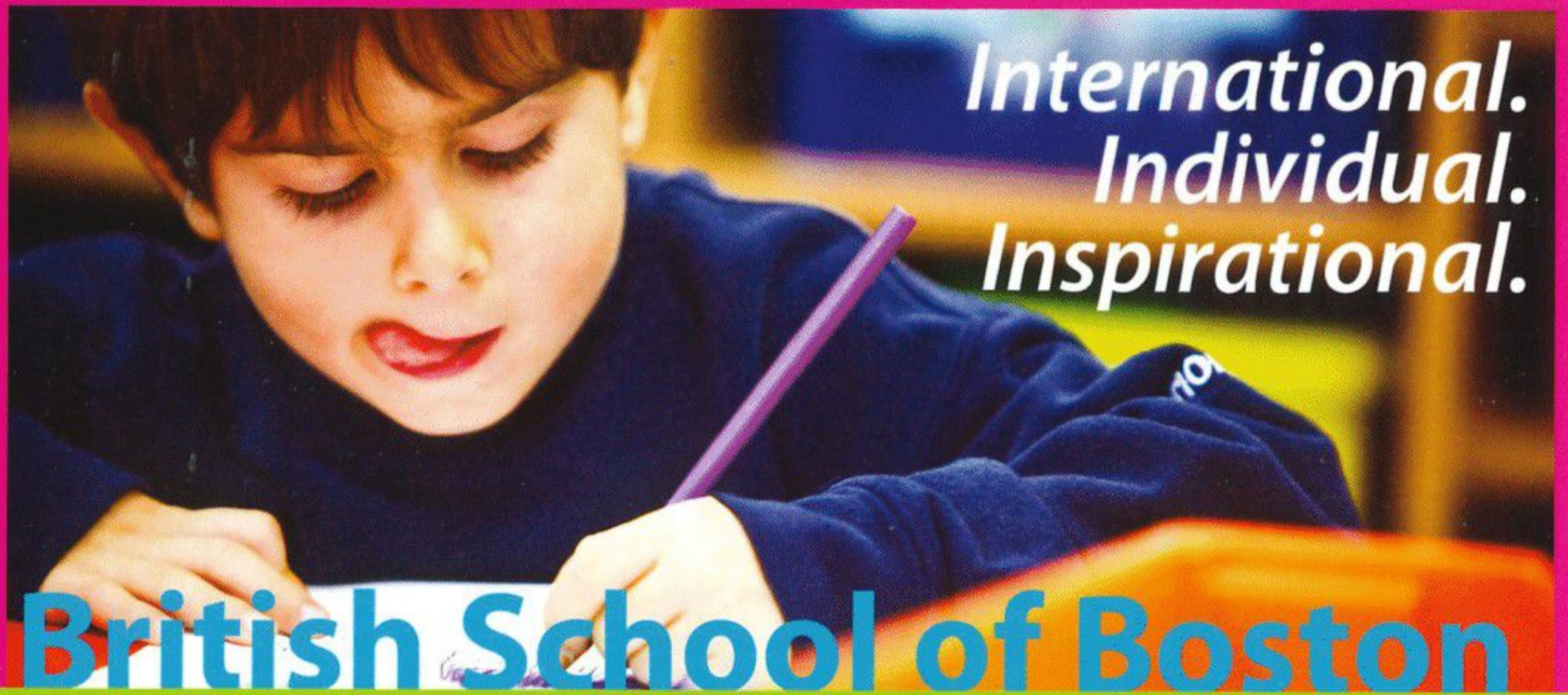
CREWS, WORK/STUDY STUDENTS, AND INTERNS

Vanessa Alvarez, Soriah Barrett, Sonia Belkin, Lauren Bird, Marvin Brow, Mia Cianciarulo, Christopher Collins-Pisano, Katelyn Coty, Henry Davies, Kalila Dolen-McCarthy, Brooke English, Bienvenido Estevez, Eve Evens, Fantasia Fernandes, Rivka Fleischman, Kendra Grant, Megan Hughes, Emily Jestus, Diana Kilguss, Katrina Kligge, Rachel Leblanc, Colin Lee, Bielke Liriano, Kaitlin Mahon, Elizabeth Meisten, Leah Nelson, Tori O'Connor, Alicia Selman, Coretta Simmons, Lindsey Snyder, Kate Tejada, Catherine Torres, Samantha Tremko, Doris Vincent, Jacqui Williams

SPECIAL THANKS

Jamie Aznive; Gabriel Babin and Sanjeev Joshi; Jeffrey Scott Burrows; Shawn P. Cotter; Sara Driscoll; Kevin Gillespie for poster art; Jeri Hammond for the study guide; Wilmene Hercule; Michael Johnson; Meg McGuire; Tony Mosley and the staff of the Service Center; Grace Napier; Jasmine Ngan; Rachel Pellegrine; Gamalia Pharms; Dan Robert; Frank Romero and members of the Wheelock College Facilities staff; Nancy Viall Shoemaker; Julia and Pier Talbot; and Cyrus Veyssi.

We wish to thank all the people who have joined with us since the program went to press.



*International.
Individual.
Inspirational.*

British School of Boston

Academically rigorous and internationally focused, featuring the International Baccalaureate Diploma. Serving toddlers through High School students.

Open Houses:	Saturday, November 3	1:00 - 3:00 p.m.
	Wednesday, December 5	9:30 - 11:00 a.m.
	Tuesday, January 15	9:30 - 11:00 a.m.

High School Merit Scholarships available
NEW Toddler Program from 18 months

617.522.2261
www.britishschoolofboston.org



voted the
BEST

parenting publication
in north america
not once, not twice,
but three times
in 2012 by **LocalMedia**
association

to find a copy nearest you go to
www.baystateparent.com

Wheelock Family Theatre Advisory Board

WFT's Advisory Board is a group of dedicated individuals from broad and diverse segments of the community who provide support and expertise to WFT's staff and artists on an ongoing basis. We are grateful for their insights and their enthusiasm.

Carola Cadley, Co-Chair

VP, Corporate Development and Marketing, Children's Hospital Trust, Boston

Mindy d'Arbeloff, Co-Chair

VP of Business Development, Fundraise.com, Boston

Carole Charnow

President and Chief Executive Officer, Boston Children's Museum

Eleanor Chin

Principal, Clarity Partners Coaching and Consulting, Jamaica Plain

John (Jeff) Coburn, Co-Chair Emeritus

Managing Director, Coburn Consulting, Boston

Rosario A. Dominguez

Senior Training & Technical Assistance Associate, Head Start National Center on Program Management and Fiscal Operations. Education Development Center, Inc., Waltham

Ed Feather

Senior Brand Director, PARTNERS+simons, Boston

Andrea (Andi) Genser

Executive Director, WE CAN Corporation, Harwich Port

Nancy Gertner

Professor of Practice, Harvard Law School, Cambridge

Lillian Gonzalez

Principal, Gonzalez & Associates P.C., Stoughton

Alicia Gordon

Partner, Gordon Lower Public Relations, Boston

Charles (Chuck) B. Gordon

VP, Development, Health Leads, Boston

Mieko Kamii

Educator (retired), Belmont

Steven M. Key, Esq.

Attorney, Law Office of Steven M. Key, Jamaica Plain

Robin Mount, Co-Chair Emerita

Director, Office of Career Services, Harvard University, Cambridge

Meegan Turet

Fine Arts Chair, Academy of the Pacific Rim Charter Public School, Hyde Park

Linda Chin Workman

President, Asian Task Force Against Domestic Violence, Boston

Wheelock Family Theatre extends deep appreciation to the following members of the Wheelock College community for their continuing support: President Jackie Jenkins-Scott; Stephen Dill, Marketing Manager; Michael Fesko, Director of Campus Services; Joan V. Gallos, VP for Academic Affairs; Marjorie Hall, Chair of Arts; Adrian K. Haugabrook, VP for Enrollment Management and Student Success; Ed Jacques, Director of Facilities; Anne Marie Martorana, VP and Chief Financial Officer; Marta T. Rosa, Special Assistant to the President for Government and External Affairs; Roy Schifilliti, VP for Campus Life and Information Services; and Linda Welter, VP for Institutional Advancement.

WFT Annual Fund Supporters

Since 1981 Wheelock Family Theatre has been bringing high-quality professional productions and educational programs to children and families from communities throughout the Boston area. We are proud of our commitment to keep the quality of our productions high and our ticket and tuition prices affordable. But ticket income covers only about two-thirds of our costs – for the rest, we rely on the support of those generous institutions and individuals who value our work and understand the contribution we make to the community.

Institutional Supporters

Actors' Equity Foundation
Bank of America
Boston Cultural Council
Boston Parents Paper
Google
Esther B. Kahn Charitable Foundation
Massachusetts Cultural Council
PARTNERS+simons
Peabody Foundation
Carl and Ruth Shapiro Family Foundation
Sodexo
Wheelock College
Yawkey Foundation

Individual Donors

Angels (\$1,000 and up)

Anonymous (3)
Judy and Bob Anderson
Atlantic Philanthropies Director/Employee
Designated Gift Fund
Amy and Ed Brakeman
Carola Cadley
Catherine and Jeff Coburn
Daughters Fund, a Donor Advised Fund
of Combined Jewish Philanthropies,
at the recommendation of Sharon L. Rich
and Nancy E. Reed
Sally Reeves Edmonds
Erin Gilligan and Hoil Kim
Gonzalez & Associates, P.C.
Elizabeth Hoskins '56
The Kaim Family
Susan Kosoff
Robert Lincoln
Carol and Gordon Marshall
Melissa Miller
The Mussafer Family
Greg Nash
Suzanne R. Newton
The Rowell Foster Children's Fund
Brooke and Neal Sandford
Ellen H. and Philip W. Skove and Families
Jane Staab

Leading Players (\$500-\$999)

Janet Bailey
Charles G. Baldwin
Carole Charnow
Eleanor Chin and Kevin Gillespie
Amanda Cunningham
Sarah and Richard deLima
Lauren and George Doherty
Kay Arden Elliott

Priscilla Fales
Barbara Elliott Fargo
Ellie Friedland
Andrea Genser
Leslie E. and Charles B. Gordon
The Joanis Family
Matthew T. Lazure
Brian L. Masters
Mr. John's Cleaners

Supporting Players (\$100-\$499)

Anonymous (6)
Detris and Olivia Adelabu
Amy Almeida
Lori G. Ashline
Ann-Josephine and Matthew Auguste
Jane Awad
Marjorie, Martha, and Maggie Bakken
Sanjay Banker and Sejal Patel
Nancy P. Barber
Arthur Barlas
Anamaria and James Barron
John P. Bay
Margaret Bergstrand
Mindy Berman and Family
Teresa Betit and Haley Medea
Alan and Debbie Bieri
Susan Bigger and Kevin Belanger
Danny Bolton
Debra Borkovitz
Mrs. F. Elwood Bray
Susan Moyer Breed
Cheryl and Leonard Brown
Richard Charlton
Marla Choslovsky and Paul Greenberg
Edward F. Coakley*
Peter Colao
Ellen Colton
Sue Costello and Jeff Keffer
Robert Crabtree
Tina and Harvey Crosby
John Davin
Susan DeColaines and Bill Swanson
Bob Doane
Zelinda and John Douhan
Natalie Eldridge and Libba Ingram
Raymond Fahrner
Nicole Faulkner
Ed Feather
Bobbi Fox
Nancy Gertner
Mary Beth Gordon

Dot Gorenflo
Yvette Hochberg
Andrea C. Hoffman
Anne and Jim Howard
Mary C. Huntington
Hannah Intille
Jeanne and Norton Juster
Ruth C. Kahn
Debby Keefe
Sally Kindleberger
Danny LaChance
Diane LaRocque
Al Lewis
Nicky and Paige L'Hommedieu
Blair MacInnes
Ulla C. Malkus
The Mardell Sandberg Family
John McCormack
James W. Meyer
Elizabeth A. Moore
Elizabeth Moriarty
Jennifer Morrison and Richard Marks
Mila J. Moschella '75
Grace Napier and William Monnen
Charlotte and Ed Peed
The Perry Family
Mary ElizaBeth Peters
Nancy and Bill Purinton
Bonnie Rosenberg
Judith H. Rosenberg
Stefi Rubin
Anne and David Salant
Chip and Elizabeth Sheeran
Spring Sirkin
Barbara B. Slater
Judy Smith
Ruthann Sneider
Mr. and Mrs. George R. Sprague
William duPont Staab, Jr.
Thomas Stenberg
Alan Strauss
Carolyn Auwers Tatarian
Cynthia Price Taylor
Joan I. Thorndike
Joan Watts
Jack Welch
Jerry Wheelock
Martha and Jeff Winokur
Richard Wood
Christine Hamel Woodberry and
Shelley Bolman Woodberry
Nancy Zechausen

We are grateful to all our generous donors, including 82 contributors of amounts below \$100.

This list reflects gifts and pledges made between 7/1/11 and 6/30/12.

* deceased

The Fourth Decade

Our ability to sustain our record of excellence and access depends on the ongoing support of individuals and families who believe in our mission and provide continuing support. The Fourth Decade program, launched at the time of our 30th anniversary in 2011, is an opportunity for generous and devoted patrons to contribute to our long-term sustainability with three-year commitments of support. More than 40 generous patrons have joined the Fourth Decade group, investing longer term in the people and infrastructure we need to provide more and even better experiences for children and families in the future.

Anonymous (4)	Priscilla Fales	Melissa Miller	Mary ElizaBeth Peters
Judy and Bob Anderson	Andrea Genser	Robin Mount	Alfreda Piecuch
Janet Bailey	Erin Gilligan and Hoil Kim	The Mussafer Family	Sharon L. Rich and Nancy E. Reed
Danny Bolton	Gonzalez & Associates, PC	Grace Napier and William Monnen	Brooke and Neal Sandford
Amy and Ed Brakeman	The Hedequist Family	Greg Nash	Chip and Elizabeth Sheeran
Carola Cadley	Pat Jehlen	Anne H. and John W. Newton	Jane Staab
Catherine and Jeff Coburn	The Kaim Family	The Niziak Family	Hope Haslam Straughan
Lauren and George Doherty	Susan Kosoff	Lisa Johnson Ogrinc	Alan Strauss
Natalie Eldridge and Libba Ingram	Nicky and Paige L'Hommedieu	Suzanne Olbricht	Lee and Steve Whitfield
Kay Arden Elliott			Martha and Jeff Winokur

The Susan Kosoff Legacy Fund

The Susan Kosoff Legacy Fund was established in honor of WFT co-founder and long-time producer Susan Kosoff. The money raised through the "Wonderful Wizard of Wheelock" campaign on the occasion of Sue's retirement in the spring of 2012 has been placed in an endowed fund. Proceeds will be used to support new initiatives in theatre education and outreach.

Anonymous (6)	Lauren and George Doherty	Louis Kampf	Johanna Schneider
Carol and Mike Akillian	Catherine Donahue	Helen Kass	Nina Schuessler
Jacquelyn Alexander	Zelinda and John Douhan	Mimi Katano and Phil Smith	Jenna Lea Scott
Monica and Eric R. Allon	Tina Durand	Debby Keefe	Joyce Hope Scott
Minnie Ames	Christie Dustman and Patti Ryan	Judith H. Kidd	Michelle Seligson
Judy and Bob Anderson	Sally Reeves Edmonds	Andrew Klein	Alane K. Shanks
Barbara Anthony	Joyce and Larry Eldridge	Sarah Klein	Spring Sirkin
Nina Aronoff	Natalie Eldridge and Libba Ingram	Edgar Klugman	Ellen H. and Philip W. Skove and Families
Steve Aveson	Kay Arden Elliott	Carol Knox	Fran Smith
Clifford Baden	Kimberly Elliott	Judy and John Knutson	Ruthann Sneider
Janet Bailey	Priscilla Fales	Florence Koplou	Kate Snodgrass
Sherill Baldwin and Kimball Cartwright, Jr.	Barbara Elliott Fargo	Virginia and Michael Kosoff	Sarah and John Soboleski
Linda Banks-Santilli	Ellen Faszewski	Jeanette Lake	Sodexo
Anamaria and James Barron	Fish Family Foundation	Wendy Lement	Phyllis Sonnenschein
Mary Battenfeld	Judith L. Fleischman	Diane Levin	Donna Sorbello
Lynne Beasley	Donna Folan	June Lewin	William duPont Staab, Jr.
Diana Brigham Beaudoin	Margaret E. Francis	Nicky and Paige L'Hommedieu	Martha Stearns
Deborah Beck	David W. Frank	Erica Licea-Kane	Bobbie and Bob Steinbach
Gary Bergstrom	Lauren and Jonathan Freed	Robert Lincoln	Jody Steiner
Judy Berk	Josephine and Amy A. Freedman	Valerie Maio	Thomas Stemberg
Alan and Debbie Bieri	Ellie Friedland	Elizabeth Malkin	Chris Stokes
Gay Bird	Hilary and Chris Gabrieli	Ulla C. Malkus	Martha E. Stone
Linda Cabot Black Foundation	Laura and Michael Garand	Carol and Gordon Marshall	Dorothy Stoneman
George and Michelle Blaisdell	Andrea Genser	Allan and Anne Marie Martorana	Hope Haslam Straughan
Blue Cross Blue Shield of Massachusetts	Jenn and Ben Gerber	David E. Matz	Karen and Hale Sturges
Margaret Ann Brady	Nancy Gertner	Ethel McConaghy	Stephanie Cox Suarez
Amy and Ed Brakeman	Betsy and Ed Giles	Kyla McSweeney	Deirdre Sullivan
The Greenfield Brandt Family	Erin Gilligan and Hoil Kim	Terry Meier	Julie Sutherland
Linda Braun	Joseph W. Glannon	Franklin N. Meissner, Jr.	Carolyn Auwers Tatarian
Mrs. F. Elwood Bray	Charlotte and Hy Glick	Beth Miller	Katherine and Benjamin B. Taylor
Susan Moyer Breed	Susan Gochenour and Steven Rosen	Melissa Miller	Wesley L. Taylor, Jr.
Cheryl and Leonard Brown	Lisa Korak Goldberg	Mark Minton	Sandra Thompson
Monique McIntyre Brown	Kippy Goldfarb	Lois Mirsky	Susan and William Thompson
Carola Cadley	Gregory Gómez	Deanne Morse	Joan I. Thorndike
Carole Charnow	Gonzalez & Associates, P.C.	Robin Mount	Joyce Todd
Jodi and Michael Chase	Debbie Goodman	Greg Nash	Eleonora Villegas-Reimers
Daniel S. Cheever, Jr.	Leslie E. and Charles B. Gordon	Donald Neiberg	Charles Walker, Jr.
Christopher Chew	Mary Beth Gordon	Charlotte W. Neinas	Barry, Wendy, and Sarah Wanger
Eleanor Chin and Kevin Gillespie	Dot Gorenflo	Tricia Norton	Joan Watts
Valerie C.M. Ching	Sara Gronim	Elsa Nuñez	Cheryl Weber
Hilary Cipullo	Marjorie J. Hall	Valerie and Victor Ostrower	Suzanne Weinstein
Keena Clifford	Persis G. Hamilton	Charlotte and Ed Peed	Susan Weir
Edward F. Coakley*	Evelyn Bullitt Haussein	The Perry Family	Phil Weiss
Catherine and Jeff Coburn	Stephanie and Kevin Hawkinson	Catherine Peterson	Jack Welch
Ellen Colton	Bernice Healy	Joel C. Peterson	Penelope Wells
Daughters Fund, a Donor Advised Fund of Combined Jewish Philanthropies, at the recommendation of Sharon L. Rich and Nancy E. Reed	Tina Helm	Alfreda Piecuch	Linda Welter
Margaret Leitch Copeland	Patty Hnatiuk	Martha and Joel Pierce	Susan Werbe
Sue Costello and Jeff Keffer	Andrea C. Hoffman	Lynne Potts	Joan F. Wexler
Helen Cotton	Emily Wright Holt	Nancy and Bill Purinton	wheelock College
Tina and Harvey Crosby	Fiora M. Houghteling	Purple Ink Insurance	Alan White
Stephanie D'Alessandro	Anne and Jim Howard	Donna M. Reulbach	Claire White
Ceronne Daly	Chobee Hoy	Wendy Riordan	Donna White
Deborah D'Amico	Mary C. Huntington	Liz and Fred Robbins	Lee and Steve Whitfield
Marjorie V. Danford	Douglas Jabara	Robert Rogers	Tony Williams
Mindy d'Arbeloff	Pat Jehlen	Mary Ann and Ed Rooney	Leverett Wing
Joeritta Jones de Almeida	Dhonyale and Cheyenne Jones	Lynne and Victor Rosansky	Martha and Jeff Winokur
Andrea E. Doane	Jennifer Jones	Bonnie Rosenberg	Elizabeth B. Wolf
Bob Doane	Timothy Jozwick	David Rothaus	Linda Chin Workman
	Jeanne and Norton Juster	Stefi Rubin	Russell Woron-Simons
	Ruth C. Kahn	Deborah Samuels-Peretz	Karen Worth
	Mieko Kamii and Donald Hafner	Lori Ann Saslav	
		Beth and Eric Schlager	

* deceased

Won't you join us?

For information about becoming a supporter of Wheelock Family Theatre, please contact Kay Elliott at 617.879.2252 or visit www.wheelockfamilytheatre.org.

(continued from page 9)

Robert Saoud (Matthew Cuthbert) was last seen as Danny Maguire in *Xanadu* at SpeakEasy. He was in the national tour of *Groucho* playing Chico Marx opposite Gabe Kaplan as Groucho. This is his 14th production with WFT, and he is always happy to return. Other local credits include the Huntington, Trinity Rep, NSMT, Merrimack Rep, the Lyric, New Rep, Boston Playwrights', the Stoneham, Worcester Foothills, and Overture; he was also in the cast of Boston's longest-running show, *Shear Madness*. Robert has been seen in many commercials and independent films. He is a 2000 Fellow of the Eugene O'Neill Cabaret Symposium and has performed numerous cabarets in NY and Boston. He is a proud member of Actor's Equity.

Jenna Lea Scott (Diana Barry) is excited to be back on the WFT stage and to be working with this wonderful cast and crew. She was last seen as Christmas Eve in *Avenue Q* at the Lyric. WFT credits include *The Phantom Tollbooth*, *Annie*, *Honk!*, *Seussical*, and *Peter Pan*. She has also performed with Walnut Street, the Depot, the Stoneham, Worcester Foothills, and Forestburg Playhouse. Jenna is a graduate of the American Musical and Dramatic Academy and was a recipient of Walnut Street Theatre's Dorothy Haas Acting Apprenticeship. She is currently a cast member of Theatre Espresso, whose mission is to educate students by bringing history to life. Industrial film work includes films for Waste Management, PartyLite Candles, and SkillSoft. Jenna is a proud member of Actors' Equity.

Carrie Ruxin Shao (Swing) was born in China and moved to the US last year. This is her WFT debut, and she is very glad to be here. Previously she co-directed and performed the title role in *Peter Pan* at the China Welfare Institute Children's Theatre in Shanghai. Carrie is a member of the Weston Middle School Drama Club, where she was Grandma Tzeitel in *Fiddler on the Roof*, Soothsayer/Friar Lawrence in *The Complete Works of William Shakespeare*, and Waitress in *Wait Wait Bo Bait* (a one-act play also performed at the MA Middle School Drama Festival). She won a gold medal in the China National Calligraphy Competitions.

Cassie Ruyi Shao (Swing) made her stage debut with the China Welfare Institute Children's Theatre as Wendy Darling in *Peter Pan*, which she co-directed with her sister Carrie. With the Weston Middle School Drama Club, she has appeared as Grandma Tzeitel in *Fiddler on the Roof*, Hamlet's Father's Ghost/Soothsayer in *The Complete Works of William Shakespeare*, and Student in *Wait Wait Bo Bait* (also performed at the MA Middle School Drama Festival). Cassie loves taking classes at WFT and is really excited to be in this production. She hopes to do more shows here!

Emily Sheeran (Molly Spencer), a Canadian girl herself, is especially excited to be part of bringing Anne's story to the Wheelock stage, where she has previously appeared in *Charlotte's Web*, *Honk!*, *Annie*, and *Xernona and the Grand Dragon X*. Favorite roles elsewhere have included Anne Frank in *The Diary of Anne Frank* and Mary Lennox in *The Secret Garden* (both at ATAC); Scout in *To Kill a Mockingbird* (Concord); Baby June in *Gypsy* and Young Tommy in *Tommy* (both at the Stoneham); Helen Keller in *The Miracle Worker* (Emmanuel); Frankie in *The Voice of the Prairie* (Vokes); and Tina Denmark in *Ruthless!* (Quannapowitt). A freshman at Wakefield High, Emily loves to write and draw when she isn't acting, singing, or dancing. Thanks to Jane Staab and everyone else at WFT.

Lisa Simpson (Costume Designer) started at WFT in 2004 as costume coordinator, became the Theatre's costumer in 2006, and designed the costumes for WFT's *The Miracle Worker*, *The Phantom Tollbooth*, *Annie*, *A Tale of Two Cities*, *Charlie and the Chocolate Factory*, *To Kill a Mockingbird*, and *Charlotte's Web*. Her first foray into sewing and creating costumes was at age six, when she removed and cut up her new bedroom curtains, much to her mother's dismay. Lisa has created original costumes for the Gold Dust Orphans for many years. Her work can also be seen onstage with the band Phish—she recently designed two new dresses for drummer Jon Fishman.

Jane Staab (Director) is a WFT founder and the Theatre's resident actor and casting director. Recent productions she has directed include *The Phantom Tollbooth*, *Annie*, *Honk!*, *Charlotte's Web*, *Peter Pan*, *Beauty and the Beast*, and *The Sound of Music*. Her most recent roles include the Wicked Witch of the West in *The Wizard of Oz*; Great Mother in *The Little Mermaid*; Madame Defarge in *A Tale of Two Cities*; the Grinch and Yertl in *Seussical*; and Mrs. DuBose in *To Kill a Mockingbird*. She will play Fagin in WFT's next production, *Oliver!* Jane applauds the delightful company she's had the pleasure of keeping these few weeks: the superb cast, with many new faces and many "old" friends, who have created this heartwarming story. She has tremendous admiration for the designers—Lisa, Matthew, Scott, and their crews—her talented musical director, Rob, and her fabulous choreographer, Laurel, as she has watched them make this Anne come alive. Jane would also like to thank the dedicated staff and many friends of the Theatre who help make WFT such a magical home for so many.

Nick Sulfaro (Mr. Phillips) is excited to be making his Wheelock debut with this beautiful cast! Boston credits include Angel in *RENT* (New Rep), Malcolm in *The Full Monty* and *The Nutcracker* (the Stoneham), *Photograph 51* (the Nora), *Sitting Still* (the Huntington), and the title role in *Bat Boy* (Metro Stage), for which he earned an IRNE nomination for Best Actor. He holds a BFA from Emerson College. For ASO.

Kaitee Tredway (Josie Pye) is an actor, puppeteer, tap dancer, and costume designer. She graduated from Bennington with a BA in theatre and literature. She is a company member and production manager for Fresh Ink Theatre. Recently, she joined Theatre Espresso as an understudy. As a performer, Kaitee has worked with Puppet Showplace and New Exhibition Room. She designed costumes for *Trog and Clay* (Fresh Ink), *Crave* (Heart & Dagger), *Once upon a Mattress* (the Stoneham's Young Co.), and *Not-a-box 1ppex* (GAN-e-meed). She also wrangled puppets on *Avenue Q* and coordinated quick changes for *Or* (the Lyric).

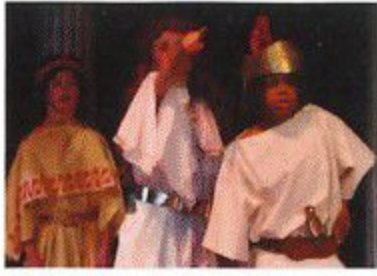
Desiree Weems (ASL Interpreter) studied American Sign Language Interpretation and theatre at UNH. She was last seen interpreting *The Wizard of Oz* at WFT and *War Horse* by Broadway in Boston. Desiree thanks family, friends, and—of course—Kristin Johnson, for giving her the opportunity to be a part of such a wonderful experience. She hopes you enjoy the show.

Kerri Wilson-Ellenberger (Mrs. MacPherson) is so excited to join the cast of *Anne of Green Gables* in telling one of her favorite stories. She was most recently seen in *Ragtime* at the Strand. Other favorite roles include Tiger Lily in *Peter Pan* (WFT), Diana Morales in *A Chorus Line*, Nehebka in *Aida*, Brenda in *Smokey Joe's Cafe*, Charlayne in *Ain't Misbehavin'*, and Liat in *South Pacific*. Many thanks to a wonderful cast and crew for making this such a great experience, and to her husband Matt for his support!

(continued on page 18)

FENN

Where Boys Thrive



The Fenn School is dedicated to meeting the academic, athletic, artistic and social needs of boys grades 4-9 as they grow from children to young adults.

"Diversity is a state of mind at Fenn. We start from the idea of inclusivity and emphasize respect and safety for all and having an open mind. Within this lies the opportunity for learning about ourselves, each other, and the ever-changing world."

Tete Cobblah
Director of Diversity
Visual Arts Coordinator

Transportation and financial aid available. Please call to arrange a private tour.

516 Monument Street, Concord, MA 01742

978.369.5800 www.fenn.org



(continued from page 17)

Ceit M. Zweil (*Miss Stacy*) is excited to be returning to Wheelock, where she has been seen in recent productions of *The Phantom Tollbooth* (Narrator/Dodecahedron) and *Annie* (Sophie/Ronnie Boylan). Additional recent performance credits include New Rep's *Little Shop of Horrors* (Ronette), the Stoneham's *42nd Street* (Anytime Annie), and NE Light Opera's *Heart and Soul: The Songs of Frank Loesser*. Favorite roles include Michelle in *The Sparrow*, Gladys Bumps in *Pal Joey*, Laney in the NE premiere of *The Girl in the Frame* (all at the Stoneham), as well as Dockdaisy in *The Resistible Rise of Arturo Ui* and Liliane LaFleur in *Nine*. Choreography credits include *Nutcracker* (the Stoneham), *Happy Days Are Here Again* (NELO), *Heart and Soul: The Songs of Frank Loesser* (NELO, also dir.), and *The Paisley Sisters' Christmas Special* (ICA and Worcester Foothills). Ceit's voice can be heard in various WGBH/PBS promos and national websites, and she served for seven years as a multi-media producer of national online kids' content for WGBH. Choreography for young performers includes *Into the Woods* and *13* (the Stoneham's Young Co.), *Bird...Plane...Superman* (Lyric First), and 11 seasons of annual musicals for the Performing Artists at Lincoln School. Her band Better Her Than Me is currently rockin' out in the Boston area. Ceit received her BA in history from Smith College and her MA in theatre education from Emerson College.

Remember:

please turn off all cell phones and electronic devices during the performance.

**WHEELOCK
FAMILY
THEATRE**

EDUCATION PROGRAM

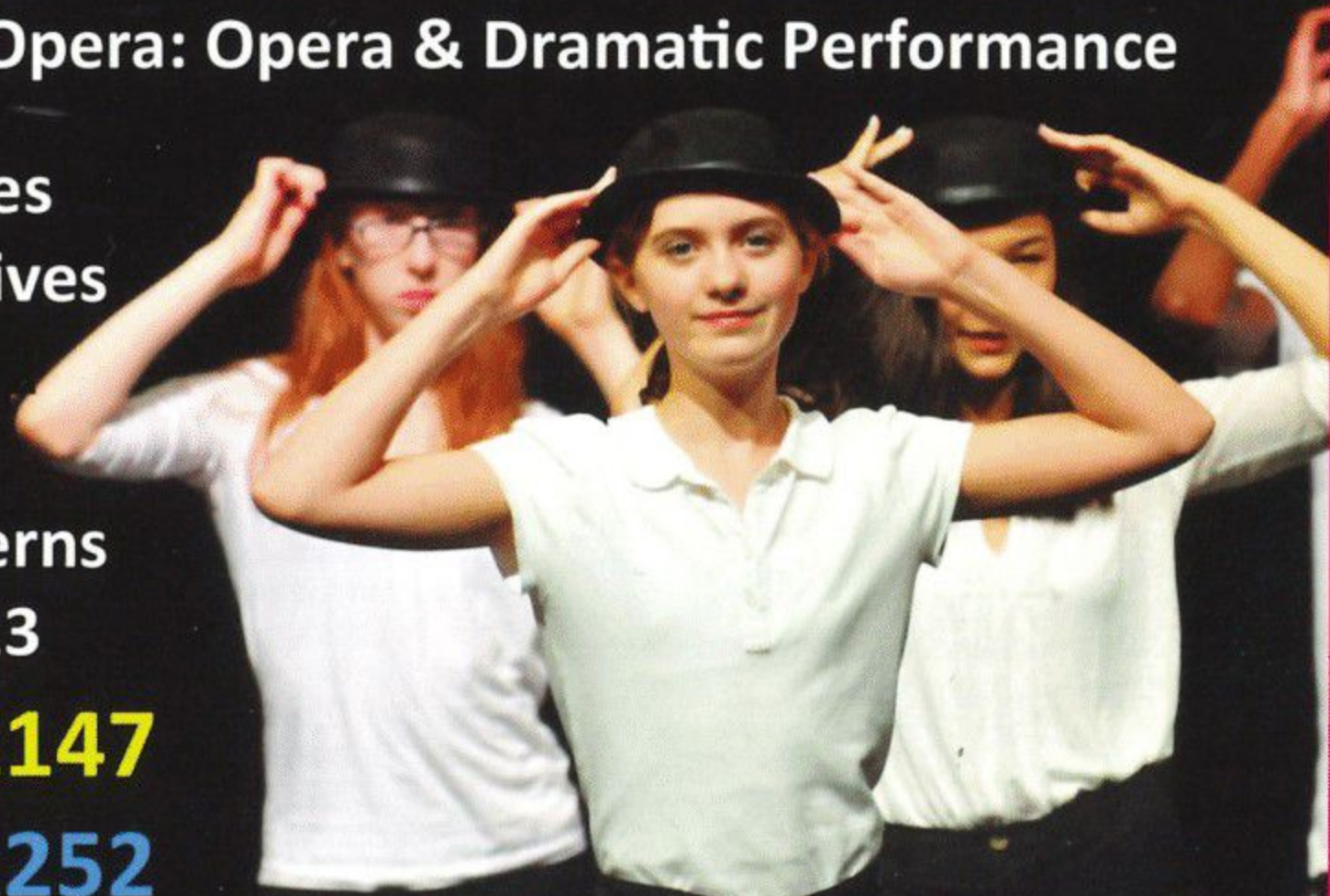
**Theatre classes for
children, youth, & teens**

**December, February, March Vacation Intensives w/
Boston Lyric Opera: Opera & Dramatic Performance**

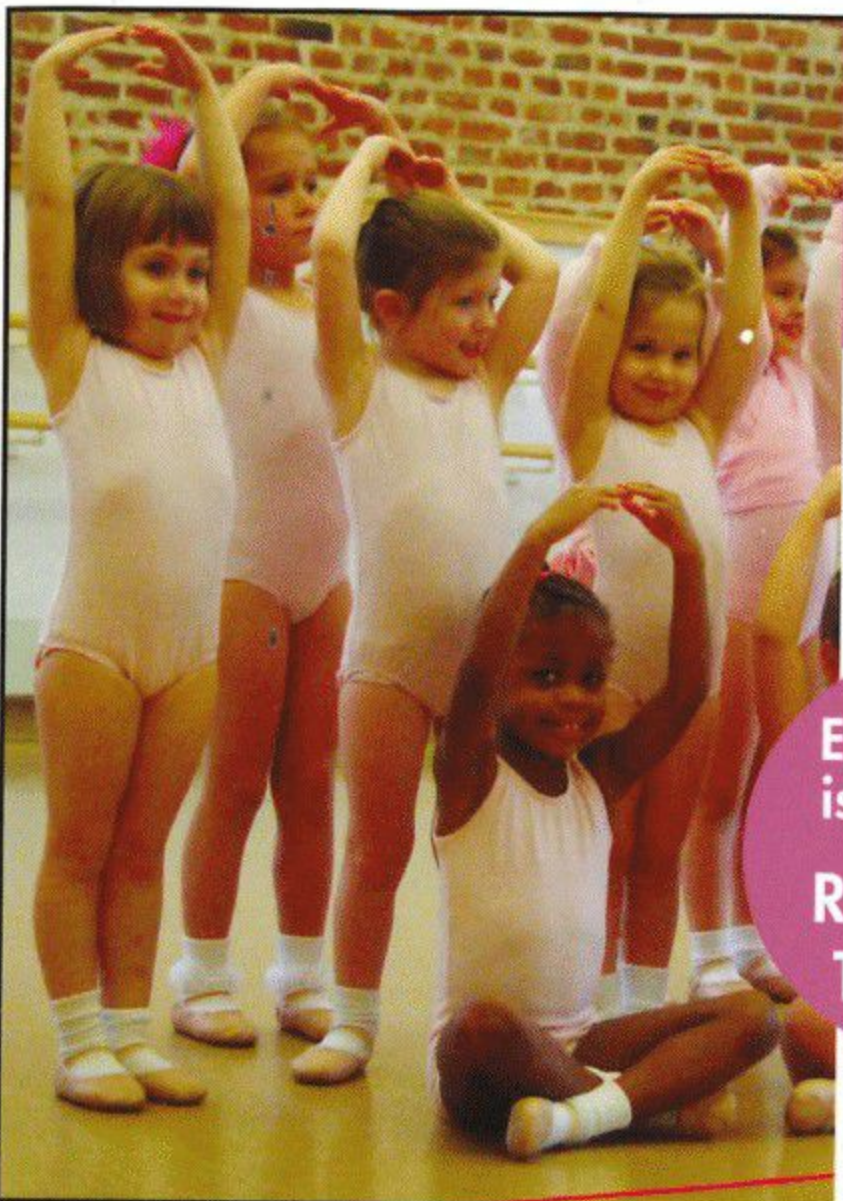
**Weekly Classes
Acting Intensives
Stagecraft
Scene Study
Technical Interns
SUMMER 2013**

617-879-2147

617-879-2252



www.WheelockFamilyTheatre.org



Boston Ballet School's Children's Program

INSPIRING A LIFE-LONG LOVE OF DANCE

Boston Ballet School's Children's Program is an innovative program designed to encourage creativity, movement, and fun for toddlers to age 7.

Enrollment
is ongoing
**REGISTER
TODAY!**

BOSTON STUDIO

19 Clarendon Street, Boston

NEWTON STUDIO

863 Washington Street, Newtonville

NORTH SHORE STUDIO

40 Leggs Hill Road, Marblehead
in the Lynch/van Otterloo YMCA

BOSTON BALLET SCHOOL

Beginners Welcome • 617.456.6333 • www.bostonballet.org/school

Boston Parents PAPER



Wishing Wheelock Family Theatre another successful year! Pick up a *Boston Parents Paper* monthly issue or visit us online at BostonParentsPaper.com



Online Articles



Weekly eNewsletter



Family Events Calendar



Contests!

Browse Our New
Online Directories!

Kids' Camps

&

Online
EG Education &
Enrichment
GUIDE



We're proud to support the voices of our community.

When community members speak about supporting the arts, we respond to their call for making the possible actual. Valuing artistic diversity within our neighborhoods helps to unite communities, creating shared experiences and inspiring excellence.

Bank of America is proud to support Wheelock Family Theatre for its leadership in creating a successful forum for artistic expression.

[Visit us at bankofamerica.com](http://bankofamerica.com)

Bank of America 

© 2011 Bank of America Corporation
SPN-108-AD | ARD1J1U2