

WHEEL<sup>●</sup>CK  
FAMILY  
THEATRE

# Oliver!



Design by Jack Viall

**January 25 - February 24, 2013**



February 22 & 24



February 19, 22, & 24



**BEST**  
**CHILDREN'S**  
**HOSPITALS**  
A WORLD REPORT  
**U.S. News**  
**HONOR ROLL**  
 2012-13

**Boston Children's Hospital  
 Community of Care is there –  
 no matter where it hurts.**

Whether for a simple treatment or a complex procedure, you want the best care for your child. You want Boston Children's Hospital Community of Care. Our Community of Care includes satellite locations, affiliated hospitals and over 400 pediatricians across the state. To learn more, visit [bostonchildrens.org/until](http://bostonchildrens.org/until)



**Boston  
 Children's  
 Hospital**

Until every child is well™

BEVERLY | BOSTON | BROCKTON | LEXINGTON | MANCHESTER, NH | METHUEN  
 NORWOOD | PEABODY | WALTHAM | WEYMOUTH | WINCHESTER

January/February 2013

Dear Theatre-goer,

Welcome to Wheelock Family Theatre's winter production of *Oliver!* Director and WFT founder Susan Kosoff writes:

It is always invigorating to direct an adaptation of a novel by Charles Dickens. *Oliver Twist*, perhaps his most autobiographical work, burns particularly brightly with Dickens' "fiery indignation against wrong and his glowing faith in humanity" (May Lamberton Becker, Introduction to the 1949 Dodd, Mead edition of the novel). Although the musical numbers and the differences in some of the characters create a lighter mood than that of the novel, the ideas remain the same: despite society's inequities and man's inhumanity to man, there is always hope for a better world.

What was especially compelling about directing *Oliver!* has been reimagining Fagin as a woman, played by my dear friend, the incomparable Jane Staab, and using the set and costume designs original to WFT's 1987 production. Special to the 2013 production has been working with this extraordinary cast. Their creative energy and collaborative spirit are what great theatre is all about.

We hope you enjoy the show, and that you'll come back and see us in the spring for *Pippi Longstocking*. *Pippi* marks my debut as a director at WFT, and I'm excited by the challenge of reimagining this children's classic in ways that reflect and celebrate the incredible diversity of our society. Fun and surprises await you at the Villa Villekulla, so be sure to plan a return visit to WFT this spring!

Best wishes,

*Wendy Lement*

Wendy Lement, Producer

**WHEELOCK FAMILY THEATRE CONTACTS**



Tickets and Subscriptions	617.879.2300	tickets@wheelock.edu
Classes	617.879.2252	jbay@wheelock.edu
Casting	617.879.2235	jstaab@wheelock.edu
Donations	617.879.2252	kelliott@wheelock.edu
Volunteer Opportunities	617.879.2147	cbaldwin@wheelock.edu
Theatre Espresso	617.879.2148	sbolman@wheelock.edu

**Mail:** 200 The Riverway, Boston, MA 02215-4176

**Web:** [www.wheelockfamilytheatre.org](http://www.wheelockfamilytheatre.org)

# WHEELOCK FAMILY THEATRE EDUCATION PROGRAM

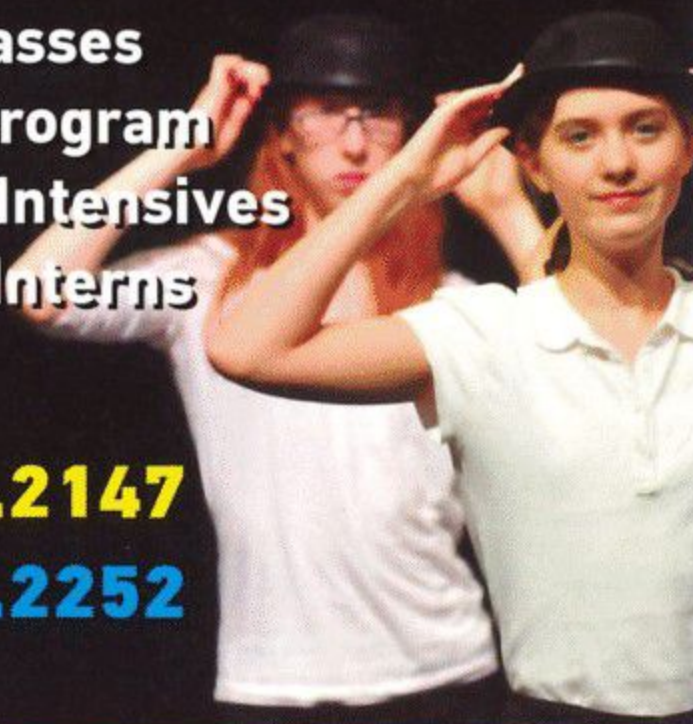
## Theatre classes for children, youth, & teens

February, March, & April Vacation Weeks

Weekly Classes  
Summer Program  
Advanced Intensives  
Technical Interns

617.879.2147

617.879.2252



[www.WheelockFamilyTheatre.org](http://www.WheelockFamilyTheatre.org)

# FENN

*Where Boys Thrive*



The Fenn School is dedicated to meeting the academic, athletic, artistic and social needs of boys grades 4-9 as they grow from children to young adults.



"Diversity is a state of mind at Fenn. We start from the idea of inclusivity and emphasize respect and safety for all and having an open mind. Within this lies the opportunity for learning about ourselves, each other, and the ever-changing world."



Tete Cobblah  
Director of Diversity  
Visual Arts Coordinator

Transportation and financial aid available. Please call to arrange a private tour.

516 Monument Street, Concord, MA 01742

978.369.5800 [www.fenn.org](http://www.fenn.org)



## Who's Who

**Charles G. Baldwin (Costume Designer)** is the Director of Marketing and Operations for WFT, as well as a designer, teacher, and visual artist. He grew up on Cape Cod and was active in the Harwich Junior Theatre, performing in many plays and working on costumes, properties, lights, and scenery. His first production design was in 1976 for *Hansel and Gretel* and featured a cupcake house made from a beach umbrella. Charles's costume design credits include work in the San Francisco area with Z Collective (which he co-founded), Joe Goode Performance Group, and Theater Artists of Marin (for which he was costumer-in-residence). His illustrations have been shown in galleries and cafes and have been published as greeting cards, calendars, and coloring books.

**Patrick Barron (Orphan)** is thrilled to be back on the WFT stage, where he was last seen in *The Wizard of Oz* as the Munchkin Mayor. His other WFT credits include *Annie*, *Aladdin*, and *The Little Mermaid*. Patrick also performed in *The Mikado* at his summer camp. He enjoys taking classes at WFT and Boston Casting. Patrick is a 6th grader at Mount Alvernia.

**Heather Buccini (Orphan)**, a 10-year-old Winthrop resident, is delighted to be making her WFT debut. She most recently appeared in the Stoneham's *It's a Wonderful Life* as Young Mary/Janie Bailey. Other favorite roles include Pepper in NSMT's *Annie*, Baby June in Seaside's *Gypsy*, and Annie in Neverland's *Annie Jr.* Heather studies dance, voice, and acting at the Winthrop School of Performing Arts and BCT. Thanks to family, friends, and teachers for all their love and support!

**Valerie C.M. Ching (Secondary Audio Describer)** is thrilled to be working again with her good friend, Andrea Doane, on another Wheelock production. Other WFT description credits include primary description for *Anne of Green Gables*, *The Wizard of Oz*, and *The Phantom Tollbooth*, and secondary description for *The Secret Garden*, *Honk!*, *Seussical*, *Tuck Everlasting*, *Inherit the Wind*, and *The Sound of Music*.

**Cecilia Cipullo (Fagin Kid)** is in the 7th grade at the Driscoll School in Brookline. She is very happy to be back on the WFT stage, having appeared here last season in *The Miracle Worker*. Other credits include *Miracle on 34th Street* (Susan Walker), *Annie* (July, Grace Farrell), *The Secret Garden* (Mary Lennox), *Willy Wonka Jr.* (title role), *Seussical Jr.* (Gertrude), *Revels Repertory* and *The Christmas Revels* (Children's Ensemble), and JMBT's *Nutcracker* (Polichinelle). Cecilia has also appeared in Project Aware's short film on bullying. Thanks to Sue and Jane.

**Charlie Clinton (Oliver)** is thrilled to make his professional musical debut with WFT! A 6th grader at Derby Academy in Hingham, Charlie most recently appeared in his school production of *The Little Mermaid, Jr.* (Sebastian). In 2011, he performed in 2 Boston Children's Theatre productions, *The Velveteen Rabbit* (Boy) and *To Kill a Mockingbird* (Walter Cunningham, Jr., u/s Dill). Charlie lives in Hull, where he has appeared in several community theatre productions with Hull Performing Arts. He is a Tenderfoot and has a black belt in karate. Charlie would like to thank his entire family for their love and support, especially his sister, Aly, who is an inspirational person, actress, and student.

**Laurel Conrad (Choreographer)** is honored to be returning for her 10th year and 11th season at WFT—where she has had the fortune to choreograph all of WFT's musicals and, occasionally, to perform. Her work here has earned her two IRNE Awards for Best Choreography for *Seussical* and *Will Rogers Follies*. Love to Jane and Sue to whom she is very grateful for the incredible chance to work with an amazing theatre company and wonderful people, creating a second family for her. Also, much love to Molly, Nyssa, and the love of her life, Mario, for their support and encouragement. xoxo

**Isabelle Cotney (Orphan)** is no stranger to the stage, as dance was her 1st love before she began her musical theatre career. During her 5 years at the Boston Ballet School, she enjoyed dancing and performing, especially in *The Nutcracker*. Isabelle was also a member of the Senior PALS Chorus Group in Brookline for 3 years, performing at Tanglewood with the BSO. She performs with Freelance Players and was last seen at WFT in *The Wizard of Oz*. Isabelle loves to sing, travel, and ski.

**Alexander Cox (Fagin Kid)** is thrilled to be making his debut at WFT, where he has enjoyed performing in the past 2 summers' youth intensives. He has been seen recently in Eastern Nazarene's *Bye Bye Birdie* (Randolph) and in Massasoit's *Children of Eden* (Young Cain). Alex is a black belt in Tae Kwon Do who loves music, playing viola and saxophone, and animals. Thanks to everyone for this wonderful opportunity!

**Andrea Doane (Primary Audio Describer)**, a WFT supporter in different roles since its inception (32 years ago!), enjoys returning to be part of the audio-description team each year. Productions she has described at WFT include, among others, *The Wizard of Oz*, *The Secret Garden*, *The Miracle Worker*, *Inherit the Wind*, *Beauty and the Beast*, *To Kill a Mockingbird*, *Seussical*, and *Honk!* Andrea is also a teacher at Devotion School in Brookline and teaches in WFT's Education Program during the summer.

**Dan Dowling, Jr. (Mr. Bumble)** is making his 8th appearance with WFT, where he was seen most recently in *Aladdin* and *Saint Joan*. His very 1st appearance here was in WFT's 1987 production of *Oliver!* as Bill Sikes. Dan received an IRNE nomination for Best Actor in a Musical for his performance as Edna Turnblad in *Hairspray* at the Reagle. He stepped into Edna's high heels a 2nd time for Beef & Boards Dinner Theater in Indianapolis. A proud member of Actors' Equity since 1998, Dan dedicates this performance to his family and friends . . . especially those far away.

**Jackson Elwell (Orphan)**, a 5th grader at the Hennigan School, is making his WFT debut. He recently performed in a school production of *The Big Chill* and played the role of Odysseus in *The Odyssey* in WFT's Summer Program. In his free time, Jackson enjoys reading and drawing, rock climbing, and spending time with friends and family - especially his younger brother, Iain. Since auditioning for *Oliver!* he has been singing - a lot.

**Lindsay D. Garofalo (Production Stage Manager)** is very excited to be returning to WFT for her 5th season as stage manager. Some of her favorite shows that she has been a part of are *Les Misérables*, *Seussical*, *Hedda Gabler*, *Romeo and Juliet*, *The Sound of Music*, *Noises Off*, *Macbeth*, *Honk!*, and *Living Out*. During the day, Lindsay is a Kindergarten SEI teacher at Graham and Parks School. A big thank you to her family for always supporting her, and to Dan for always keeping her calm.

**Jon Goldberg (Musical Director)** has been musical director at WFT since *Cinderella* in 1995. Earlier this season he was musical director for *The Mikado* (Lyric Stage) and the premiere of Sam Willmott's *Standardized Testing: The Musical* (Emerson Stage). Jon has received 4 IRNE Awards for Best Musical Director for his work at the Lyric (*A Little Night Music*; *Man of La Mancha*; *Kiss Me, Kate*; and *Grey Gardens*), and he has been associated with three Elliot Norton Award-winning productions - *Assassins* and *Sunday in the Park with George* (Lyric) and *Pacific Overtures* (NSMT). Other recent productions include *She Loves Me*, *Nine*, *Man of La Mancha*, and *Into the Woods* at Emerson, *Big River* and *Avenue Q* at the Lyric, and *As Thousand Cheer* and *Allegro* with the Lyric First Stage summer teen program. Jon is on the faculty of the musical theatre program at Emerson College.

**Stephanie Granade (Strawberry Seller, Ensemble)** is making her WFT debut! She was recently seen as Meg in NSMT's *A Christmas Carol*. Other theatre credits include Peep Bo in *The Mikado* (Lyric Stage); *Oliver!* (the Shubert, NYC); *A Christmas Carol '10 and '11* (NSMT); *Follies* (NextDoor); and *Camelot* (Irish Rep). Stephanie's opera credits include *Cendrillon* (MetroWest Opera); *La Bohème*, *Rigoletto*, and *Lucia di Lammermoor* (Lexington Opera, KY); *The Mikado* (Athena Grand Opera); and *Die Fledermaus* (Operafestival di Roma, Italy). Next up, *Thoroughly Modern Millie* at the Stoneham. Many thanks to the WFT family. Love to her husband and family! [www.stephaniegranade.com](http://www.stephaniegranade.com)

**Kaedon Gray (Ensemble)** is excited to make his 3rd appearance on the WFT stage, where he was previously seen in *Anne of Green Gables* (Earl, the Mailman) and *The Wizard of Oz* (Ensemble). Other credits include *A Chorus Line* (Richie); *Once on This Island* (Armand, Father); and *Violet* (Flick); as well as the new works *Show Up* and *Potter's Field Bed and Breakfast*, which won Boston's 2011 Fringe Fest. Kaedon has performed with the sons of Maceo Parker and recorded with the Boston String Quartet. [soundcloud.com/kaedon-gray](https://soundcloud.com/kaedon-gray).

**Katherine Gustafson (Orphan)** is thrilled to be returning to the WFT stage for the 5th time, having last been seen here as a Munchkin and a Monkey in *The Wizard of Oz*. Previous credits include *Charlotte's Web*, *The Little Mermaid*, and *Aladdin*. Those experiences, her training in WFT workshops, and working with Jane and Sue she credits for helping her land the role of Peter Pan in a summer production in NH last year.

(continued on page 6)



Boston Trust & Investment Management Company



Walden Asset Management  
Advancing sustainable business practices since 1975

**Cheers to your 2012-2013 season!**

Boston Trust & Investment Management Company

One Beacon Street | Boston, Massachusetts 02108 | 617.726.7250 | fax: 617.227.2690

WHO's WHO (continued from page 5)

**Neil Gustafson (Mr. Brownlow)** was most recently seen by WFT audiences as Captain Keller in *The Miracle Worker*. Other favorites here include Ben Weatherstaff in *The Secret Garden*, Henry Drummond in *Inherit the Wind*, Mr. Sir in *Holes*, and Teddy Lloyd in *The Prime of Miss Jean Brodie*. Neil continues to tour in a one-man show, *Isaiah Thomas – Patriot Printer*, produced by the American Antiquarian Society in Worcester and recently on WCVB-TV's *Chronicle*. Internationally, he has performed in productions of Chekhov's *The Seagull* and Shakespeare's *Hamlet*. TV credits include *The Practice*, *A Midwife's Tale*, *Africans in America*, and *Black Bellamy's Treasure*. On the big screen, he was Yuri Spinov in Brad Anderson's *Next Stop, Wonderland*. Neil is thrilled to be once again working with Sue and the wonderful staff at WFT.

**Isaac Haber (Fagin Kid)** is making his WFT debut. Recent roles include Emmett in *Legally Blonde* and Willard in *Footloose* (BCT). Isaac has played Benjamin in *Joseph . . . Dreamcoat* and performed in *Willy Wonka* and *Seussical* with the Footlight Club. An 8th grader at Meridian Academy in Brookline, he enjoys rock climbing and hanging out with friends. Isaac thanks WFT, his family, and his cat, Ernie.

**Sammy Haines (Orphan)** is very excited to be making his WFT debut. A 6th grader at the Chenery MS in Belmont, he enjoys acting, karate, singing, and going to Camp Kinderland.

**Anthony Hancock (Set Designer)** was one of the founders of WFT and its resident designer on many early productions including *Alice's Adventures in Wonderland*, *Watch on the Rhine*, and *The Diary of Anne Frank*. He wrote the book and lyrics for a number of plays, including *The Emperor's New Clothes*, *The Quest*, *The Welfare Family*, *School*, and *Heidi* with Jane Staab, as well as *The Beanstalk*, *the Giant*, and *Jack* with Susan Kosoff and Jane Staab. Tony was a true Renaissance Man.

**Ethan Hermanson (Fagin Kid)** is an 8th grader at Shady Hill and a member of WFT's Story Troupers. He has been seen here in a number of summer intensive productions and on the main stage in *Aladdin*. Other credits include Roxbury Rep's *The Diary of Anne Frank* (Peter Van Daan); New Rep's and NSMT's *A Christmas Carol* (Turkey Boy); UnCommon's *And Then They Came for Me* (Ed Silverberg); Watertown Children's *Pinocchio* (title role) and *Miss Nelson Is Missing* (Miss Viola Swamp); and the short horror movie, *Dead Rabbits Don't Dance*. When not on stage, Ethan enjoys travel, military history, and hanging out with his brother, David.

**Emma Kelley (Fagin Kid)**, an 8th grader at West MS in Andover, has been acting, singing, and dancing since 2nd grade. Credits include *Hairspray*, *The Phantom Tollbooth*, *Annie*, *13*, *The Bad Seed*, *Cinderella*, and *South Pacific*. Emma is very excited to be working with this cast and with WFT for the 2nd time.

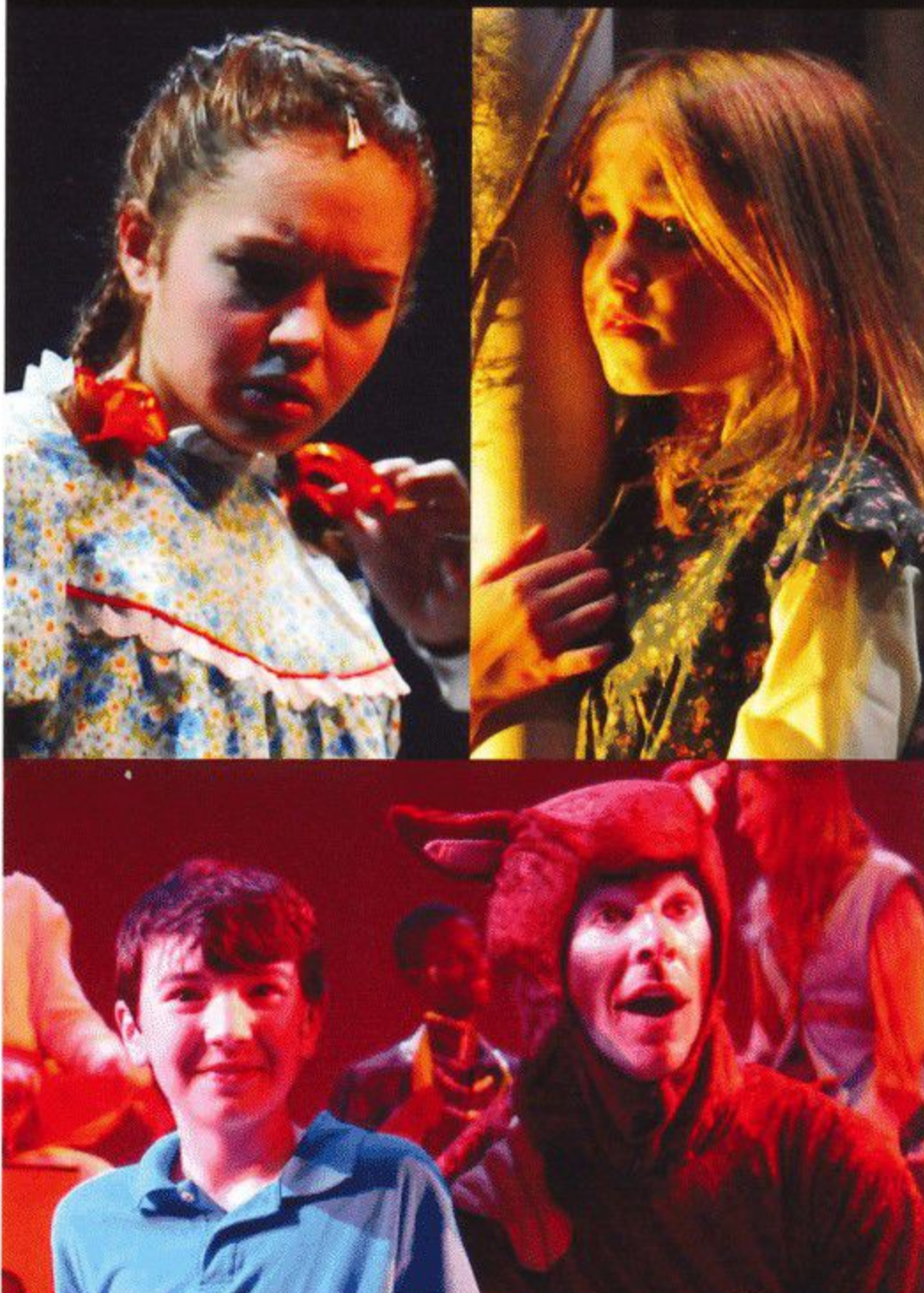
**Susan Kosoff (Director)** is a founder of WFT; professor emerita of theatre and education at Wheelock College, where she continues to teach for the Center for International Programs and Partnerships; and a member of the board of StageSource, New England's alliance for theatre artists and producers. She has written many plays, often in collaboration with Jane Staab, which have been produced here and at other theatres around the US. Among her recent 10-minute plays, *Waiting for Gretchen* appears in the *Boston Theater Marathon XI 2009 Anthology*. Other writing for the theatre includes *The Young Actor's Book of Improvisation*, *A Little Princess*, *Let There Be Light*, *O Happy Day*, and *The Beanstalk*, *the Giant*, and *Jack*. Susan has directed many productions here, including *Lord of the Flies*, *Inherit the Wind*, *Holes*, and *A Tale of Two Cities*. This one's for Tony.

**Joelle Kross (Charlotte)** is making her WFT debut. Recent credits include *The Mikado* (Lyric Stage), *My Fair Lady* (the Reagle), *Spelling Bee* (Turtle Lane), *A Christmas Carol* (Hanover), *Lucky Stiff* (Moonbox), *The Most Happy Fella* (Gloucester Stage), and *A Little Night Music* (Metro Stage). She has also sung with Boston Midsummer Opera and the London Philharmonic and Video Game Orchestras. Joelle holds a BA in theatre, music, and French from Muhlenberg College.

**Matthew T. Lazure (Set Designer)** has designed sets for Gloucester Stage (Carnival); KidStage at the Boston Children's Museum (*It's All in the Cycle*); the Gold Dust Orphans (*Medea*, *All About Christmas Eve*, and *Peter Pansy*); Provincetown Theatre (*Santaland Diaries*); and Pee Wee Players of Provincetown (*The Alp-solutely Amazing Adventures of Heidi* and *Alice in Wonderland*, *A Musical Curiosity*). His set designs for WFT include *Anne of Green Gables*, *The Phantom Tollbooth*, *Honk!*, *Lilly's Purple Plastic Purse*, *Charlotte's Web*, and *The Secret Garden* (Elliot Norton nomination). Matthew's costume designs have been seen on the WFT stage in *Beauty and the Beast*, *Peter Pan*, *Saint Joan*, and *Snow White* (IRNE nomination). A Mass College of Art graduate, he shows his fine art in Boston, Provincetown, and online at [matthewlazure.com](http://matthewlazure.com).

For backstage photos and  
cast interviews, check out  
the Wheelock Family Theatre blog:

**Whee!News**



Equity actors pictured: Katherine Leigh Doherty, Michael Wood

**Marjorie Lusignan (Props Mistress)**, a native of RI, is happy to be back for a 5th season at WFT. She continues to create things beyond her wildest expectations and to share her skills and talents with young people as a member of WFT's Education Program faculty.

**Bryan Marden (Fagin Kid)** is excited to make his debut with WFT. A resident of Merrimac in the 7th grade at Berwick Academy, he is very passionate about theatre. Recent credits include Peter Cratchit in *A Christmas Carol* (Palace Theater '12; NSMT '10 and '11), Winthrop in *The Music Man* and Peter in *Pinkalicious* (Ogunquit), Jem in *To Kill a Mockingbird* (BCT), and the NY Pops Spring Gala at Carnegie Hall. Many thanks to the WFT family for this fabulous opportunity and to his parents, grandparents, sister, friends, and teachers for all of their love and support.

**Carla Martinez (Milk Maid, Ensemble)** is thrilled to be making her WFT debut! She is a senior at Berklee College of Music majoring in Professional Music with a minor in Drama. Her regional credits include *Hair*, *Evita* (with Andrea McArdle), and *Tommy*. She has also appeared in *Hairspray* (Little Inez), *RENT* (Alexi Darling), *The Wild Party* (Dolores), and *How to Succeed in Business* (Miss Jones). She sends all of her love to her family, her friends, and her other half, Matthew. *Paciencia y fe!* Carla is proud to be an Equity Membership Candidate.

**Harry McEnery V (Knife Seller, Night Watchman, Ensemble, Stage Combat Coach)** is making his WFT debut. Boston area credits include *Of Mice and Men* (Moonbox), *Lumberjacks in Love* (Stoneham), *My Fair Lady* (Reagle), *Avenue Q* (Lyric Stage), *The Rocky Horror Show* (Turtle Lane), *Bat Boy* (Metro Stage), and *Book of Days* (Bad Habit). He has appeared on the House Teams at Improv Asylum, and is a graduate of the training center there. Harry is a resident actor with the Interim Writers Workshop in Cambridge and a founding member of Project: Project. He holds a BA in Theatre and Film from the University of Vermont.

**Franklin Meissner, Jr. (Lighting Designer)** is pleased to return to his favorite Family after designing the lighting for *The Wizard of Oz*, *The Phantom Tollbooth*, and *The Secret Garden*. He recently designed the lighting for the hit show *Avenue Q* for the Lyric Stage, where he also designed the lighting for *Ain't Misbehavin'*, *The Understudy*, and *According to Tip*. His work was recently seen in *Little Shop of Horrors* at New Rep, for whom he has designed 19 other productions, including the critically acclaimed *The Wild Party* (IRNE nomination), *Cabaret*, *A Christmas Story*, *Dessa Rose*, *Sweeney Todd* (IRNE award), *Into the Woods*, *Ragtime*, and *Moby Dick* (IRNE Award). His work has also been seen Off-and Off-Off Broadway in NYC, at Boston Playwrights' (IRNE Award), Boston Conservatory, SpeakEasy, the Stoneham (IRNE nomination), Central Square, Company, NSMT, South Shore Music Circus, Sanders Theatre, various corporate events and colleges around the state, and at 40 Carnegie Hall performances. He is a member of United Scenic Artists. For more info: [www.FranklinMeissner.com](http://www.FranklinMeissner.com).

**Adrianna Neefus (ASL Interpreter)** returns to WFT after interpreting this fall's production of *Anne of Green Gables*. Her theatrical credits include work with the Boston Landmark Orchestra. She received her degree in interpreting from UNH in Manchester. In addition to interpreting, Adrianna works as an assistant teacher at Beverly School for the Deaf.

(continued on page 8)



confidence  
creativity  
collaboration

*A community that values academic,  
social, and emotional growth equally.*



Pre-K – Grade 6

69 Grove St., Watertown, MA  
617-923-4156 | [atrium.org](http://atrium.org)



### Carolle Photography

Photography for the Performing Arts

headshots • productions • events • CDs • portraits

Kippy Goldfarb

617.946.4664 [carollephoto@aol.com](mailto:carollephoto@aol.com)

## Dave's AUTO REPAIR

"Proud to keep the Family Driving"

- Complete Auto Repair
- Inspection Stickers
- Towing Services
- Transmissions
- Suspensions

**All Service is Guaranteed**

880 Commonwealth Ave (rear)  
617-739-3100 617-566-2235

## BEST WISHES and CONTINUED SUCCESS

from

**LILLIAN GONZALEZ,  
CPA, MST, CSEP**

14 Page Terrace  
Stoughton, MA 02072  
(781) 344-1040  
FAX (781) 344-4449

[www.go-cpas.com](http://www.go-cpas.com)

## CERTIFIED PUBLIC ACCOUNTANTS

- ACCOUNTING
  - AUDITING
  - TAXES
- FINANCIAL PLANNING
- RETIREMENT PLANNING
  - ESTATE PLANNING

WHO's WHO (continued from page 7)

**Andrew Oberstein (Chairman, Bow Street Runner, Ensemble)** is thrilled to be returning to WFT after appearing as the Whetherman in last season's *The Phantom Tollbooth!* Recent local credits include *A Christmas Carol* (Hanover), *The Full Monty* (Stoneham), and *RENT* (New Rep). Andrew spent last season with the Shakespeare Now! educational tour of *Romeo and Juliet* and *A Midsummer Night's Dream*. Regional credits include: *A Taffeta Wedding* (Broward Stage, FL), *Romeo and Juliet* (Forestburgh Playhouse, NY), *Dandelion Wine* (Colony Theater, LA), *John Denver's Country Roads* and *The Music Man* (Texas Family Musicals), and *Brecht on Brecht* at the Edinburgh Festival. Andrew holds a BFA in Musical Theater from Emerson College and trained with Steppenwolf Theatre Company. For Nick and Samantha.

**Cliff Odle (Mr. Sowerberry, Dr. Grimwig)** is honored to be appearing in his 3rd WFT show. Previous credits here include *Saint Joan* and *A Tale of Two Cities*. Recently, he was seen in *RACE* as Henry Brown (New Rep) and as Kent in *Vacancy* (Elemental). Other credits include *Passing Strange* as The Narrator (New Rep); Mr. Prothero/Uncle Jim in *A Child's Christmas in Wales* (Gamm); Henry Evans in *The Good Negro* (Company One); Mister in *King Hedley II* (the Huntington); and Pontius Pilate in *The Last Days of Judas Iscariot* (Company One). Cliff is also a playwright. Some of his works performed include *The Delicate Art of Customer Service* (Boston Theater Marathon) and *June Rembrandt* (Stony Hill Players). Cliff holds an MFA from Boston University in Playwriting. He is currently an adjunct professor of theatre at UMass Boston. He is also a co-founder of the New Urban Theatre Laboratory and a founder of the Annual Jersey Voices Festival, now celebrating its 14th year. Cliff hopes that his work will serve as an inspiration to his children, GEM and C.C.

**Jacqueline Orellana (Ensemble, Charlotte Understudy)** is a sophomore at Wheelock College studying communications and performing arts. She appeared in productions with the Chelsea High School Drama Club and with the Apollinaire in Chelsea. Credits include *Hairspray* (Tracy Turnblad), *Esperanza Rising* (Ramona), *Seussical* (Gertude McFuzz), *Sangre de un Angel* (Julia), *Into the Woods* (Little Red), and *The Crucible* (Mary Warren). She is very excited to be making her WFT debut. Thanks to Sue and Jane for the opportunity and to her parents for their support.

**Adrienne Paquin (Rose Seller, Ensemble)** is thrilled to be back at WFT, having previously appeared in *The Wizard of Oz*. Recent credits include *Mack & Mabel* (Cape Rep), *Zorro!* (PaintBox), *Carnival* (Gloucester Stage), *Trojan Women* (Whistler in the Dark), *Rapunzel* in *Into the Woods* (NextDoor), *RENT* (New Rep), and *Will Rogers Follies, Thoroughly Modern Millie*, and *Ulla* in *The Producers* (Company). Adrienne toured *Milosevic at the Hague* to Joakim InterFest in Serbia in 2009. She has a BA in Theatre from UMass Amherst and has studied with American Conservatory Theatre.

**Gamalia Pharms (Widow Corney)** is happy to tread the WFT stage once more with friends old and new! She was last seen here in *Anne of Green Gables*. Some of her favorite shows at WFT include *Honk!*; *Seussical*; *Beauty and the Beast*; *The Sound of Music*; *Hello, Dolly!*; *The Trumpet of the Swan*; and *The Good Times Are Killing Me*. Gamalia has performed in regional theatres up and down the East Coast and has a BFA from Boston Conservatory of Music. Many thanks to the entire marvelous WFT staff and crew! A shout out to Mass College of Art & Design!

**Matt Phillips (Noah Claypole)** has performed in plays and musicals at Circle in the Square, New World Stages, the ART, Company One, the Reagle, Sanders Theatre, the Wimberly, the Strand, and the Majestic. He received his education from



Circle in the Square Theatre School and Boston Conservatory and is thrilled to have recently added "teacher" to his credits, having taught acting at the Reagle. Matt returns to WFT, where years ago he appeared in *The Hobbit* as a 9-year-old Elf in purple tights.

**Deb Poppel (Mrs. Bedwin)** has appeared in theatres throughout the Greater Boston area, most recently in *The Music Man* (Greater Lowell), *The Most Happy Fella* (Gloucester Stage), *My Fair Lady* (the Stoneham), and *Follies* (Lyric Stage). She has also played many roles at the Company Theatre and Turtle Lane. Deb founded Overture Productions, for which she produced and appeared in *The Baker's Wife* with Judy Kuhn, *Follies in Concert* with Len Cariou, and the Elliot Norton-Award winning *On the Twentieth Century*, with Alice Ripley and George Dvorsky. She sings with Chorus pro Musica, and is a budding songwriter.

**Alina Potashinsky (Orphan)** enjoys taking classes at the Boston Ballet School in West Newton and at the Russian School of Mathematics. She has performed with the singing and dancing group Lucky Ten and took part in an operatic performance of *The Marriage of Figaro*. In her spare time, she enjoys reading and playing with her baby brother. Alina is delighted to be participating in *Oliver!* This is her WFT debut.

**M. Lynda Robinson (Mrs. Sowerberry, Old Sally)** has been working in theatre, film, and TV for the past 30 years as an actor, director, producer, teacher, and playwright. She attended the Masters Program in Playwriting at BU and is a published playwright, most recently in *The Best Ten-Minute Plays for 2 Actors*, 2007 (Smith & Kraus). She has performed in many theatres in Boston, including the Publick, Nora, Lyric, Wilbur, WHAT, Huntington, and Provincetown Rep. At WFT she has been seen in *A Tale of Two Cities* and *To Kill a Mockingbird*. Lynda has appeared in hundreds of commercials, corporate videos, live trade-shows, and voice-overs as well as in principal roles in film and TV. In 1993, she was honored with the Elliot Norton Award for Outstanding Boston Actress, one of the 1st local actors to win this recognition. Lynda teaches at Boston Casting, WFT, and TV Workshop. She received the Distinguished Arts Educator Award in Theatre by Arts/Learning in 2010.

**Brittany Rolfs (Nancy)** could not be more excited to be back at WFT after playing Annie Sullivan in last season's production of *The Miracle Worker*. Other favorite roles include Stepmother in *Cinderella*, Alice's Mother/Queen of Hearts in *ALICE* (written by Andrew Barbato and Lesley DeSantis), Georgie in *The Full Monty*, Joanne in *Company*, Rose in *Gypsy*, TiMoune in *Once on This Island*, Angel in *The Rink*, Mary Jane in *Big River*, Miss Hannigan in *Annie*, and the Sour Kangaroo in *Seussical*. When not on stage, Brittany is a nanny and theatre educator. She has worked as an instructor for youth programs within the Milton and Quincy Public Schools and at Riverside, the Stoneham, and Raise the Curtain. She received a 2011 Midtown International Theatre Festival Award Nomination for Best Costume Design for her work on *ALICE*. Many thanks to everyone here at WFT for making this a home away from home and for making dreams come true! Love and thanks to family and friends and an extra special thank you to Cynthia. For more information about Brittany, check out her website [www.brittanyrolfs.webs.com](http://www.brittanyrolfs.webs.com).

**Abigail Seidel (Ensemble)** is a senior at Wheelock College and ecstatic to be in such a wonderful production during her last semester! She has appeared in several shows at WFT, including *Annie* and *The Phantom Tollbooth*. Other recent credits include Rona in *Spelling Bee* (Best Show nomination, Kennedy Center American College Theatre Festival), Gladys in *The Pajama Game*, Sarah in *Translations*, and Melinda in *Inherit the Wind*. Thanks to everyone for making this show spectacular!

(continued on page 17)



**GEORGE W. BLAISDELL**  
INSURANCE BROKER

*The Governor's Mansion*  
P.O. Box 644 Hampton Falls, NH 03844

TOLL FREE 800-882-8535

Providing both buyers and sellers with the highest quality professional real estate brokerage services available.

*Chobee*  
**Hoy** associates



18 Harvard Street  
Brookline, Massachusetts  
02445

617 739 0067

**ROFFI**  
SALON & DAY SPA

*The curly hair expert in Boston*  
Ouidad Certified

134 Newbury Boston 02116 [michaelroffi.com](http://michaelroffi.com)

# Oliver!

a musical based on Charles Dickens' *Oliver Twist*  
Book, Music, and Lyrics by Lionel Bart

MUSICAL DIRECTOR  
**Jon Goldberg**

COSTUME DESIGNER  
**Charles G. Baldwin**

STAGE COMBAT COACH  
**Harry McEnery V**

ASL INTERPRETERS  
**Adrianna Neefus, Desiree Weems**

DIRECTOR  
**Susan Kosoff**

SET DESIGNER  
**Matthew T. Lazure**  
based on original designs by Anthony Hancock

PROPS DESIGNER  
**Marjorie Lusignan**

CHOREOGRAPHER  
**Laurel Conrad**

LIGHTING DESIGNER  
**Franklin Meissner, Jr.**

PRODUCTION STAGE MANAGER  
**Lindsay D. Garofalo\***

AUDIO DESCRIBERS  
**Valerie C.M. Ching, Andrea Doane**

## THE CAST

Oliver Twist	<b>Charlie Clinton</b>
Mr. Bumble	<b>Dan Dowling, Jr.*</b>
Widow Corney	<b>Gamalia Pharms*</b>
Noah Claypole	<b>Matt Phillipps</b>
Mr. Sowerberry/Dr. Grimwig	<b>Cliff Odle*</b>
Mrs. Sowerberry/Old Sally	<b>M. Lynda Robinson*</b>
Charlotte	<b>Joelle Kross</b>
The Artful Dodger	<b>Jeffrey Sewell</b>
Fagin	<b>Jane Staab*</b>
Nancy	<b>Brittany Rolfs*</b>
Bet	<b>Caroline Workman</b>
Bill Sikes	<b>Timothy John Smith*</b>
Mrs. Bedwin	<b>Deb Poppel</b>
Mr. Brownlow	<b>Neil Gustafson*</b>

## ENSEMBLE

Stephanie Granade, Kaedon Gray, Carla Martinez, Harry McEnery V, Andrew Oberstein, Jacqueline Orellana, Adrienne Paquin, Abigail Seidel, Adena Walker, Alan R. White

## FAGIN'S KIDS

Cecilia Cipullo, Alexander Cox, Isaac Haber, Ethan Hermanson, Emma Kelley, Bryan Marden

## ORPHANS

Patrick Barron, Heather Buccini, Isabelle Cotney, Jackson Elwell, Katherine Gustafson, Sammy Haines, Alina Potashinsky, Lilia Smyth, David Sullivan, John Sussman, Connor Upton, Arthur Wheelock-Wood, Adam Wintzer

Matinee understudy for Charlotte: Jacqueline Orellana

Produced by special arrangement with Tams-Witmark Music Library, Inc., 560 Lexington Avenue, New York, NY 10022.

There will be one 15-minute intermission between acts.

Ask the House Manager for individual sound enhancement devices.

The taking of photographs and use of recording devices is strictly forbidden.

**Please turn off all electronic devices.**

**Please, no eating or drinking in the theatre.**



\*Member of Actors' Equity Association, the Union of Professional Actors and Stage Managers in the United States. The Wheelock Family Theatre is operating under the terms of a Developing Theatre's Program of Actors' Equity Association. The contract used is a Letter of Agreement.

# Wheelock Family Theatre

## STAFF

Producer	<b>Wendy Lement</b>
Casting Director/Business Manager/ASM	<b>Jane Staab*</b>
Director of Education	<b>John Bay</b>
Publicity and Marketing Director	<b>Charles G. Baldwin</b>
Assistant Producer/Managing Director, Theatre Espresso	<b>Shelley Bolman</b>
Administrative Director	<b>Kay Arden Elliott</b>
Development Consultant	<b>Janet Bailey</b>
Assistant Director of Education	<b>Lisa Rowe-Beddoe</b>
Audience Engagement Coordinator	<b>Marianne Adams</b>
Grantswriter	<b>Robin J. Hanley</b>
Access Coordinator	<b>Judy Berk</b>
Box Office Supervisor	<b>Stephen Reinstein</b>
Technical Director	<b>Matthew T. Lazure</b>
Production Manager	<b>Brian Masters</b>
Assistant Technical Director/Master Electrician	<b>Craig A. Zemsky</b>

## PRODUCTION TEAM

Assistant to the Director	<b>Priscilla Fales</b>
Assistant to the Stage Manager	<b>Robin Liberty</b>
Assistant to the Set Designer	<b>Nandhini Sundaesan</b>
Props Mistress	<b>Marjorie Lusignan</b>
Costumer	<b>Lisa Simpson</b>
Assistant to the Costumer	<b>Jennie Hudson-Bryant</b>
Stitchers	<b>Mina Ha, Sarah Kershaw</b>
Costume Shop Assistant	<b>Hannah Smith</b>
ASL Consultant	<b>Kristin Johnson</b>
Captioning	<b>Jamie Aznive, Janet Cagan-Teuber</b>
	<b>Ruth Kahn, Diana Kilguss</b>
Scenic Carpenters	<b>M. Doughty, Chelsea Elwell</b>
Sound Operator	<b>Eric Norris</b>
Electricians	<b>Lauren Audette, Oliva Brownlee, Meghan Crimmins, Fred Lazar, Ben Murray, Dylan Seo, Alix Strasnick, Julia Streeter</b>

## EDUCATION PROGRAM FACULTY

Kortney Adams, Esme Allen, Melissa Baroni, Dana Jay Bein, Christy Betit, Shelley Bolman, Danny Bolton, Jennifer Buller, Robin Connors, Laurel Conrad, Laura DeGiacomo, Andrea Doane, P.J. Durand, Donna Folan, Ellie Friedland, Jeri Hammond, Angela Harvey, Brenda Huggins, Hannah Husband, Angie Jepson, Kristin Johnson, Marjorie Lusignan, Brett Marks, Brian Masters, Yvonne Murphy, Grace Napier, John O'Neil, Kirsten Opstad, Sophie Rich, Ilyse Robbins, M. Lynda Robinson, Rita Thompson, Fran Weinberg, Alan White

## CREWS, WORK/STUDY STUDENTS, AND INTERNS

Vanessa Alvarez, Lauren Audette, Soriah Barrett, Sonia Belkin, Lauren Bird, Marvin Brow, Oliva Brownlee, Mia Cianciarulo, Christopher Collins-Pisano, Rachel Copans, Katelyn Coty, Meghan Crimmins, Kalila Dolen-McCarthy, Brooke English, Bienvenido Estevez, Eve Evens, Fantasia Fernandes, Rivka Fleischman, Kendra Grant, Megan Hughes, Emily Jestus, Sarah E. Johnson, Diana Kilguss, Katrina Kligge, Fred Lazar, Rachel Leblanc, Colin Lee, Bielka Liriano, Kaitlin Mahon, Sharrone Marcano, Elizabeth Meisten, Ben Murray, Leah Nelson, Tori O'Connor, Alicia Selman, Dylan Seo, David Silber, Coretta Simmons, Lindsey Snyder, Alix Strasnick, Julia Streeter, Kate Tejada, Catherine Torres, Samantha Tremko, Jessica Trester, Ayako Ueda, Doris Vincent, Jacqui Williams

## SPECIAL THANKS

Jamie Aznive; Gabriel Babin and Sanjeev Joshi; Shawn P. Cotter; Sarah deLima; Janet Fell; Teresa Kelley; Robin McLaughlin and the Harwich Junior Theatre; Tony Mosley and the staff of the Service Center; Frank Romero and members of the Wheelock College Facilities staff; Nancy Viall Shoemaker and Jack Viall for poster art; Pier Talbot; Jerry Wheelock; Andrew Will; and Richard Wood.

*We wish to thank all the people who have joined with us since the program went to press.*

# MUSICAL PROGRAM

The story is set in London, about 1850.

## ACT ONE

Food, Glorious Food	Oliver and Orphans
Oliver	Mr. Bumble, Widow Corney, and Orphans
I Shall Scream	Mr. Bumble and Widow Corney
Boy for Sale	Mr. Bumble
That's Your Funeral	Mr. Sowerberry, Mrs. Sowerberry, and Mr. Bumble
Where Is Love?	Oliver
Consider Yourself	Artful Dodger, Oliver, and Ensemble
Pick a Pocket or Two	Fagin and Fagin's Kids
It's a Fine Life	Nancy, Bet, and Fagin's Kids
I'd Do Anything	Artful Dodger, Nancy, Oliver, Bet, Fagin, and Fagin's Kids
Be Back Soon	Fagin, Artful Dodger, Oliver, and Fagin's Kids

## ACT TWO

Oom-Pah-Pah	Nancy, Bet, and Ensemble
My Name	Bill Sikes
As Long as He Needs Me	Nancy
Where Is Love (reprise)	Mrs. Bedwin
Who Will Buy?	Oliver and Ensemble
It's a Fine Life (reprise)	Nancy, Bill Sikes, Fagin, and Artful Dodger
Reviewing the Situation	Fagin
Oliver (reprise)	Widow Corney and Mr. Bumble
As Long as He Needs Me (reprise)	Nancy
Reviewing the Situation (reprise)	Fagin

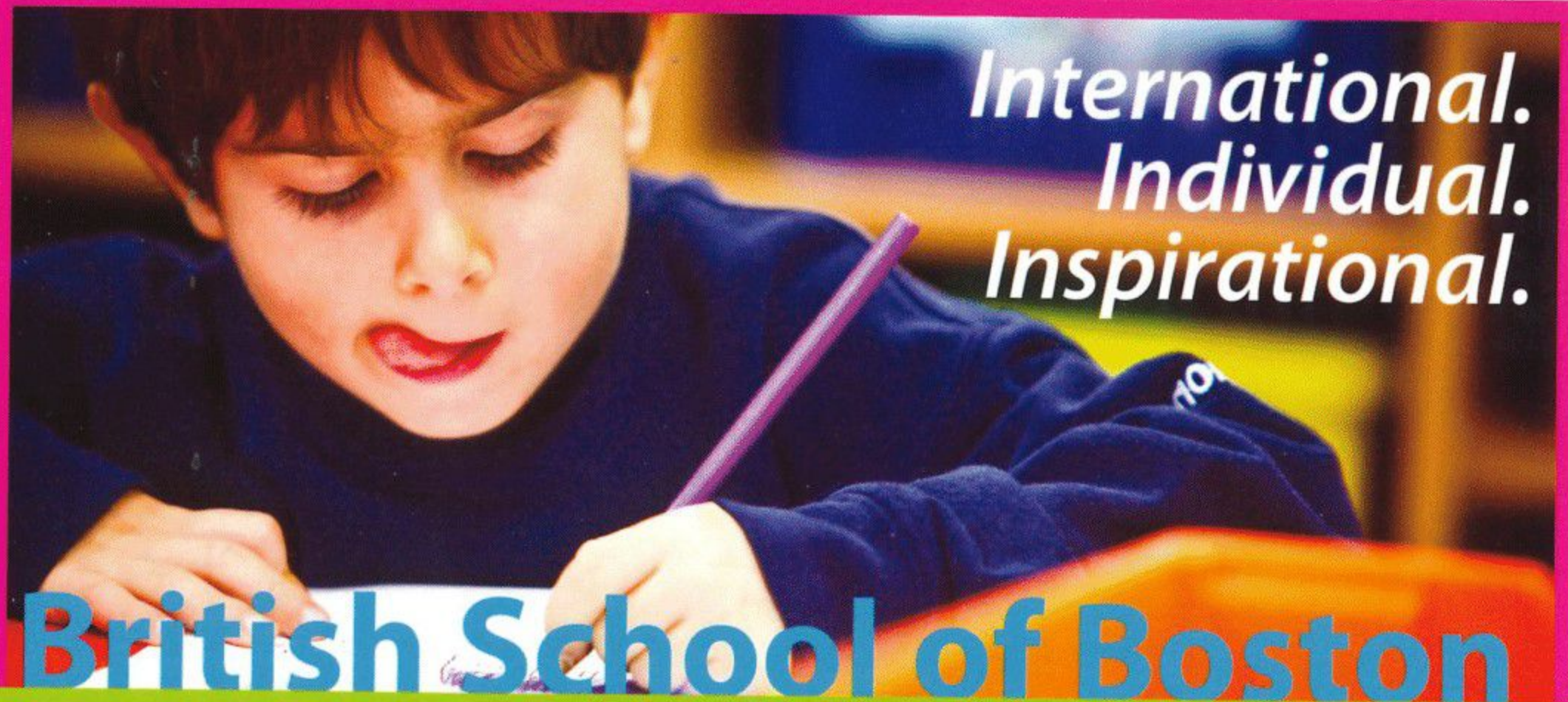
## ORCHESTRA

**Keyboards/Conductor** – Jon Goldberg  
**Reeds** – Louis Toth, Heather Katz-Cote (alternate: Jason May)  
**Trumpet** – Chris Rymes     **Trombone** – Peter Fanelli  
**Bass** – Kate Foss     **Percussion** – Tom Schmidt (alternate: Nate Tucker)

Open captioning provided in collaboration with c2 (caption coalition) inc, [www.c2net.org](http://www.c2net.org).

Wheelock Family Theatre is a member of the American Alliance for Theatre and Education (AATE); ArtsBoston; the Consortium of Boston Area Children's Theatres (CBACT); Cultural Access New England (CANE); StageSource, the Alliance of Theatre Artists and Producers; and the Theatre Artists' Marketing Alliance (TAMA).





*International.  
Individual.  
Inspirational.*

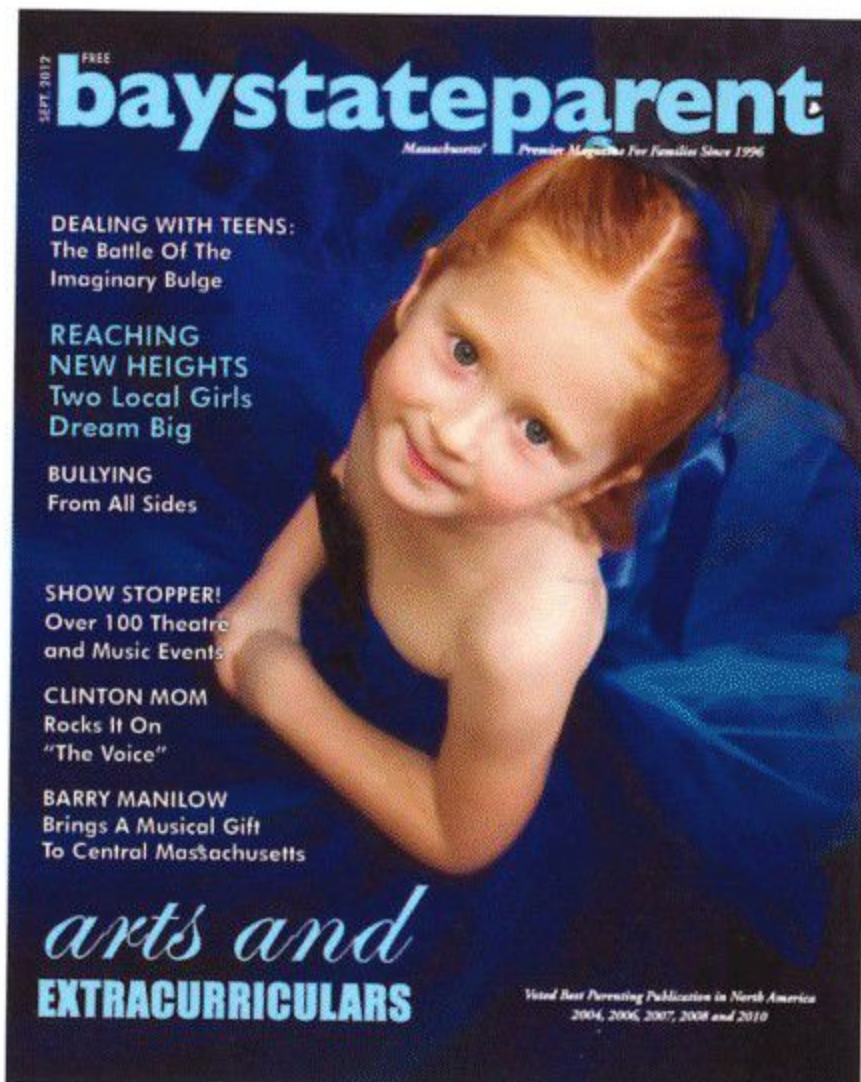
# British School of Boston

Academically rigorous and internationally focused, featuring the International Baccalaureate Diploma. Serving toddlers through High School students.

<b>Open Houses:</b>	Saturday, November 3	1:00 - 3:00 p.m.
	Wednesday, December 5	9:30 - 11:00 a.m.
	Tuesday, January 15	9:30 - 11:00 a.m.

High School Merit Scholarships available  
NEW Toddler Program from 18 months

617.522.2261  
[www.britishschoolofboston.org](http://www.britishschoolofboston.org)



voted the  
**BEST**  
parenting publication  
in north america  
not once, not twice,  
but three times  
in **2012** by **LocalMedia**  
association

to find a copy nearest you go to  
**[www.baystateparent.com](http://www.baystateparent.com)**

## Wheelock Family Theatre Advisory Board

WFT's Advisory Board is a group of dedicated individuals from broad and diverse segments of the community who provide support and expertise to WFT's staff and artists on an ongoing basis. We are grateful for their insights and their enthusiasm.

**Carola Cadley, Co-Chair**

VP, Corporate Development and Marketing, Children's Hospital Trust, Boston

**Mindy d'Arbeloff, Co-Chair**

VP, Business Development, fundraise.com, Boston

**Carole Charnow**

President and Chief Executive Officer, Boston Children's Museum

**Eleanor Chin**

Principal, Clarity Partners Coaching and Consulting, Jamaica Plain

**Linda Chin**

President, Asian Task Force Against Domestic Violence, Boston

**Jeff Coburn, Co-Chair Emeritus**

Managing Director, Coburn Consulting, Boston

**Ceronne B. Daly**

Director of Diversity Programs, Office of Human Resources, Boston Public Schools

**Rosario A. Dominguez**

Senior Training & Technical Assistance Associate, Head Start National Center on Program Management and Fiscal Operations, Education Development Center, Inc., Waltham

**Priscilla Fales**

Teacher, Beacon Hill Nursery School, Boston

**Ed Feather**

Senior Brand Director, PARTNERS+simons, Boston

**Andrea Genser**

Executive Director, WE CAN Corporation, Harwich Port

**Nancy Gertner**

Professor of Practice, Harvard Law School, Cambridge

**Lillian Gonzalez**

Principal, Gonzalez & Associates P.C., Stoughton

**Charles B. Gordon**

VP, Development, Health Leads, Boston

**Eric Hermanson**

Attorney, Edwards Wildman Palmer LLP, Boston

**Mieko Kamii**

Educator (retired), Belmont

**Steven M. Key, Esq.**

Attorney, Law Office of Steven M. Key, Jamaica Plain

**Susan Kosoff**

Co-founder, Wheelock Family Theatre

**Robin Mount, Co-Chair Emerita**

Director, Office of Career Services, Harvard University, Cambridge

**Brooke Sandford**

Parent Volunteer, Sudbury

**Meegan Turet**

Fine Arts Chair, Academy of the Pacific Rim Charter Public School, Hyde Park

Wheelock Family Theatre extends deep appreciation to the following members of the Wheelock College community for their continuing support: President Jackie Jenkins-Scott; Stephen Dill, Marketing Manager; Michael Fesko, Director of Campus Services; Joan V. Gallos, VP for Academic Affairs; Marjorie Hall, Chair of Arts; Adrian K. Haugabrook, VP for Enrollment Management and Student Success; Ed Jacques, Director of Facilities; Anne Marie Martorana, VP and Chief Financial Officer; Marta T. Rosa, Special Assistant to the President for Government and External Affairs; Roy Schifilliti, VP for Campus Life and Information Services; and Linda Welter, VP for Institutional Advancement.

## WFT Supporters

Since 1981, Wheelock Family Theatre has been bringing high-quality professional productions and educational programs to children and families from communities throughout the Boston area. We are proud of our commitment to keep the quality of our productions high and our ticket and tuition prices affordable. But ticket income covers only about two-thirds of our costs – for the rest, we rely on the support of those generous institutions and individuals who value our work and understand the contribution we make to the community.

### Institutional Supporters

Actors' Equity Foundation  
Bank of America  
Blue Cross Blue Shield of Massachusetts  
Boston Children's Hospital  
Boston Cultural Council  
Boston Parents Paper  
Google  
Esther B. Kahn Charitable Foundation  
Massachusetts Cultural Council  
PARTNERS+simons  
Peabody Foundation  
Carl and Ruth Shapiro Family Foundation  
Sodexo  
Wheelock College  
Yawkey Foundation

### Individual Donors

#### Angels (\$1,000 and up)

Anonymous (4)  
Judy and Bob Anderson  
Atlantic Philanthropies Director/Employee  
Designated Gift Fund  
Dr. Liliana Bordeianou and Eric B. Hermanson  
Amy and Ed Brakeman  
Carola Cadley  
Catherine and Jeff Coburn  
Daughters Fund, a Donor Advised Fund of  
Combined Jewish Philanthropies, at the  
recommendation of Sharon L. Rich & Nancy E. Reed  
Sally Edmonds  
Priscilla Fales  
Erin Gilligan and Hoil Kim  
Gonzalez & Associates, P.C.  
Susan Kosoff  
Carol and Gordon Marshall  
Melissa Miller  
Robin Mount  
The Mussafer Family  
Greg Nash  
Suzanne Olbricht  
Brooke and Neal Sandford  
Ellen H. and Philip W. Skove and Families  
Jane Staab

#### Leading Players (\$500-\$999)

Anonymous (1)  
Janet Bailey  
Charles G. Baldwin  
Sarah and Richard deLima  
Lauren and George Doherty  
Kay Arden Elliott  
Andrea Genser\*  
The Kaim Family  
Matthew T. Lazure  
Brian L. Masters  
Jennifer Morrison and Richard Marks\*  
The Niziak Family  
Chip and Elizabeth Sheeran

#### Supporting Players (\$100-\$499)

Anonymous (1)  
Amy Almeida  
Marjorie, Martha, and Maggie Bakken\*  
Mary Battenfeld and Bill Perkins  
John Bay  
Mindy Berman and Family  
Pamela Blau and Gordon Fellman  
Danny Bolton  
Debra Borkovitz  
John Davin  
Dean K. Denniston, Jr.  
Mary Lee and Buzz Dunn\*  
Natalie Eldridge and Libba Ingram  
The Falkowski Family\*  
The Gaffney Family\*  
Meryl Galaid\*  
Eileen and John Gallagher\*  
Hannah Intille  
The Kilburn Family  
Sally Kindleberger  
Dan and Sharry Langdale\*  
Nicky and Paige L'Hommedieu  
Blair MacInnes  
Mary and Mike McConnell  
Carol and David Mersky  
Laura Morrison and Richard Pels  
Grace Napier and William Monnen

Antonia Nedder  
Lisa Johnson Ogrinc  
Mary ElizaBeth Peters  
Deb Poppel  
Adelaide M. Queeney  
Dorothy and Owen Robbins  
Maggie Seelig  
Virginia Spencer  
Mr. and Mrs. George R. Sprague  
Alan Strauss  
Becky Thompson\*  
Thu-Hang Tran and Mark S. Day\*  
Martha and Jeff Winokur  
Paul Zayotti  
Sally and Richard Zeckhauser

*In memory of Edward F. Coakley  
a beloved member of the WFT family,  
wise counselor, and dear friend:*

Judy Anderson  
Michael and Val Burke  
Mary A. Carey  
Charles River Country Club  
Brian Connors  
Helen Corscadden  
Margaret and James Giblin  
Ann, Brian, Liam, and Colin Gleason  
Maureen and John Harrington  
Carol and Stanley Johnson  
Nancy and Charles Marks  
The Marvan Family  
Nancy May and Richard Fish  
Anne McKenna and Mary Paulk  
The Morgensterns  
Charles and Anita Murphy  
Ed and Sandy Nabham  
Kim Prendergast  
The Rolincik Family  
Sue and Joel Sherman  
Janet Smillie  
Ellen and Greg Tufankjian  
Julie and Peter Veale

\*includes support for the Susan Kosoff Legacy Fund, established in honor of WFT Co-Founder and long-time Producer Susan Kosoff on the occasion of her retirement in the spring of 2012. Proceeds from this endowed fund will be used to support new initiatives in theatre education and outreach.

We are grateful to all our generous donors, including 46 contributors of amounts below \$100. This list reflects gifts and pledges made between 7/1/12 & 1/14/13.

## The Fourth Decade

Our ability to sustain our record of excellence and access depends on the ongoing support of individuals and families who believe in our mission and provide continuing support. The Fourth Decade program, launched at the time of our 30th anniversary in 2011, is an opportunity for generous and devoted patrons to contribute to our long-term sustainability with three-year commitments of support. More than 40 generous patrons have joined the Fourth Decade group, investing longer term in the people and infrastructure we need to provide more and even better experiences for children and families in the future.

Anonymous (4)	Natalie Eldridge and Libba Ingram	Nicky and Paige L'Hommedieu	Mary ElizaBeth Peters
Judy and Bob Anderson	Kay Arden Elliott	Melissa Miller	Alfreda Piecuch
Janet Bailey	Priscilla Fales	Robin Mount	Sharon L. Rich and Nancy E. Reed
Susan Bigger and Kevin Belanger	Andrea Genser	The Mussafer Family	Brooke and Neal Sandford
Danny Bolton	Erin Gilligan and Hoil Kim	Grace Napier and William Monnen	Chip and Elizabeth Sheeran
Amy and Ed Brakeman	Gonzalez & Associates, PC	Greg Nash	Jane Staab
Carola Cadley	The Hedequist Family	Anne H. and John W. Newton	Hope Haslam Straughan
Catherine and Jeff Coburn	Pat Jehlen	The Niziak Family	Alan Strauss
Lauren and George Doherty	The Kaim Family	Lisa Johnson Ogrinc	Lee and Steve Whitfield
	Susan Kosoff	Suzanne Olbricht	Martha and Jeff Winokur

For information about becoming a supporter of WFT, contact Kay Elliott at 617.879.2252 or visit [www.wheelockfamilytheatre.org](http://www.wheelockfamilytheatre.org).



Undergraduate &  
Graduate Degrees  
in Education,  
Social Work  
Organizational  
Leadership,  
and Arts & Sciences

For more info:  
[wheelock.edu](http://wheelock.edu)

WHEELOCK  
COLLEGE **125**  
1888 - 2013

**TheatreEspresso**  
WAKE UP TO HISTORY!

**PLEASE JOIN US:**  
**Monday, March 4th**  
at Wheelock Family Theatre

Frances Clayton



Join us as we celebrate our **20th Anniversary!**

- Excerpts from our new play:  
*Secret Soldiers: Women Who Fought in the Civil War*
- Special Keynote Speaker: The Honorable Nancy Gertner, U.S. District Court (Retired) and Author of *In Defense of Women: Memoirs of an Unrepentant Advocate*

Proceeds from the event will help subsidize performances for Boston Public Schools at the John Adams Courthouse, and Lawrence Public Schools at Lawrence Heritage State Park. Our interactive plays are designed to enhance and deepen the history and civics curriculum for students and help them connect events from the past with current day issues of racism, social injustice and the evolutionary nature of the law.

To purchase tickets to this event or to learn more about us, visit our website at [www.TheatreEspresso.org](http://www.TheatreEspresso.org) or contact Shelley Bolman, Managing Director, at 617.879.2148 or [sbolman@wheelock.edu](mailto:sbolman@wheelock.edu).





(continued from page 9)

**Jeffrey Sewell (Artful Dodger)** is THRILLED to be appearing in his 5th WFT show. He was seen here last year as Milo, in *The Phantom Tollbooth*. Other WFT credits include *Annie*, *Peter Pan*, and *Beauty and the Beast*, as well as WFT summer intensive productions of *Into the Woods Jr.* (Baker) and *Fiddler on the Roof Jr.* (Perchick). Jeffrey has also appeared in the title role in *Oliver!* at Fiddlehead; *The Secret Garden* (Colin), *Les Misérables* (Gavroche), and *Seussical* (JoJo) at Alexander Children's Theatre; *Mame* (Peter) at the Reagle; and *Working* (Newsboy) and *A Civil War Christmas* (Children's Ensemble) at the Huntington. Jeffrey is perhaps best known for his YouTube video, "So Much Better Legally Blonde Cover," which has had more than 100,000 views. He also performed Lady Gaga's "Born This Way" at Joe's Pub in NYC. Thanks to Jane, Charles, Sue, and the whole WFT family for giving him this amazing opportunity. Also thanks to his mom and dad and the rest of his family for their continued support.

**Timothy John Smith (Bill Sikes)** appeared at WFT as the Cowardly Lion in *The Wizard of Oz* and Daddy Warbucks in *Annie*. Recent credits include the Governor in *Candide* and Taylor in *Prelude to a Kiss* at the Huntington, Martin Dart in *The Receptionist* and Le Mec in *Paris by Night* at Trinity Rep, as well as Satan in *Jerry Springer: The Musical*; Johan in *Groundswell*; General Howell in *Kiss Me, Kate*; Henry Higgins in *My Fair Lady*; Richard III in *Richard III*; Titania/Theseus in *A Midsummer Night's Dream*; Eddie in *Fool for Love*; and Richard Henry Lee in *1776* (IRNE Award). He is a graduate of Saint Anselm College and the Trinity Rep Conservatory. [timothysmithactor.com](http://timothysmithactor.com)

**Lilia Smyth (Orphan)** is ecstatic to be making her WFT debut. She has performed with Encore Rep, RI Stage, and Steps Off Broadway; favorite roles include Annie in *Annie Jr.* and Sally in *Snoopy the Musical*. Favorite film roles include Virginia in *Moonflower* and Grace in *Where's Grace?* Lilia has also sung the national anthem for the Providence Bruins. She is a proud student at the only all-girls Quaker school in the nation, Lincoln School in Providence, RI. Lilia is very grateful to everyone at WFT for this exciting opportunity.

**Jane Staab (Fagin)** has performed many roles at WFT over her 32 years as co-founder, casting director, and business manager. In past productions she has taken on a few roles most often portrayed by men: Prospera in *The Tempest*, Abby Sedgewick in *Superman*, and Willy Wonka in *Charlie and the Chocolate Factory*. She has also happily portrayed many exciting female roles—most recently the Wicked Witch of the West. Jane is pleased to bring a piece of underreported history to the role of Fagin, as a woman who survived in a troubling society by dressing as a man. She dedicates this performance to all those brave souls who take creative risks in order to make the most of life.

**David Sullivan (Orphan)** is a 3rd grade student at the Advent School in Boston. Credits with Charlestown Working Theater include Boy Scrooge in *A Christmas Carol*, William Shakespeare in an adaptation of *Twelfth Night*, and, most recently, Sir Max in *King John*. David enjoys playing the piano, soccer, and studying mathematics. He lives in Charlestown with his parents.

**John Sussman (Orphan)** is thrilled to perform with Wheelock! He is a 6th grader at the Rashi School in Dedham and likes to go by "Josh."

**Connor Upton (Orphan)** is excited to be making his debut at WFT. Favorite roles include Winthrop in *The Music Man* (Winthrop Playmakers) and Jackie Gilbreth in *Cheaper by the Dozen* (Bay State). Connor is in the 3rd grade at Milton Academy and, in addition to acting, loves to invent, rock climb, fence, play chess, and sketch. He thanks WFT for this wonderful experience and his family for their support and encouragement.

**Adena Walker (Old Annie, Ensemble)** started her acting career with WFT in *The Hobbit* and *The Tempest* and is happy to be back for *Oliver!* She holds a BA from Wagner College with a major in theatre performance and a minor in psychology. Recent productions include Turtle Lane's *Spelling Bee* (Olive Ostrovsky) and *Ragtime* with Fiddlehead. Past credits include *Smokey Joe's Café* (B.J.), *A Midsummer Night's Dream* (Fairy), *The Who's Tommy* (Acid Queen), and *Ragtime* (Sarah). Adena created a YouTube blog dedicated to music from the 1900-1920's called *Two Good Kids Make Love to Your Grandma*. She lends her voice to Wonderland High (available on iTunes). For more updates and information check out <http://adenawalker.com/>.

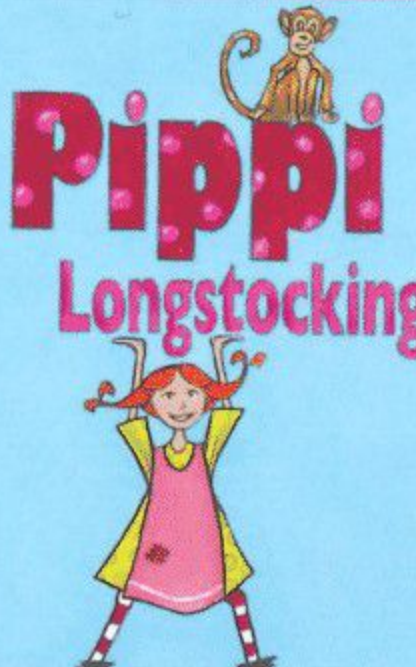
**Desiree Weems (ASL Interpreter)** studied American Sign Language Interpretation and theatre at UNH. Recent interpreting credits include *Anne of Green Gables* at WFT and *War Horse* by Broadway in Boston. Desiree thanks family, friends, and—of course—Kristin Johnson, for giving her the opportunity to be a part of such a wonderful experience. She hopes you enjoy the show.

**Arthur Wheelock-Wood (Orphan)**, last seen here as a Munchkin and Oz Citizen in *The Wizard of Oz*, enjoys singing, drawing, and putting on shows. He has taken theatre classes at WFT, Riverside, Puppet Showplace, and BraveArts. Arthur has performed in school plays and two operas; he sings in the school chorus and most recently performed in The Big Sing at Saint Cecilia Church in Boston. His grandmother in NYC takes him to Broadway shows like *The Lion King* and *Wicked*.

**Alan R. White (Ensemble, Bow Street Runner)** is happy to be returning to WFT, where he previously appeared in *The Wizard of Oz*, *Saint Joan*, and *Annie*. Other recent roles include Harlem ensemble in *Ragtime* (Fiddlehead) and Feste in *Twelfth Night* (Arts After Hours). Alan is a member of Theatre Espresso and performs multiple roles in the company's 5-show line-up. He has taught classes, workshops, and residencies partnered with WFT and CityStage.

**Adam Wintzer (Orphan)** is appearing in his first musical at WFT and he is thrilled to be part of the cast. He performed in the *Urban Nutcracker* for 4 years, attended Boston Ballet's Summer Dance Program and has studied dance for 5 years at Origination. Adam is in 6th grade at The Learning Project, where his favorite subjects are English, history, and recess.

**Caroline Workman (Bet)** is thrilled to be part of the fabulous cast of *Oliver!* Other credits include *The Wizard of Oz* and *Annie* (WFT) and *Billy Elliot the Musical* (Broadway). She has performed at the Smithsonian Museum, NYC Tapfest, Fenway Park, with the cast of *Fela!*, and at PFLAG and Equity Fights AIDS benefits. Caroline thanks director Sue Kosoff for this wonderful opportunity, and vocal coach Doug Jabara, CYDP director Deborah Mason, and her family for their support.



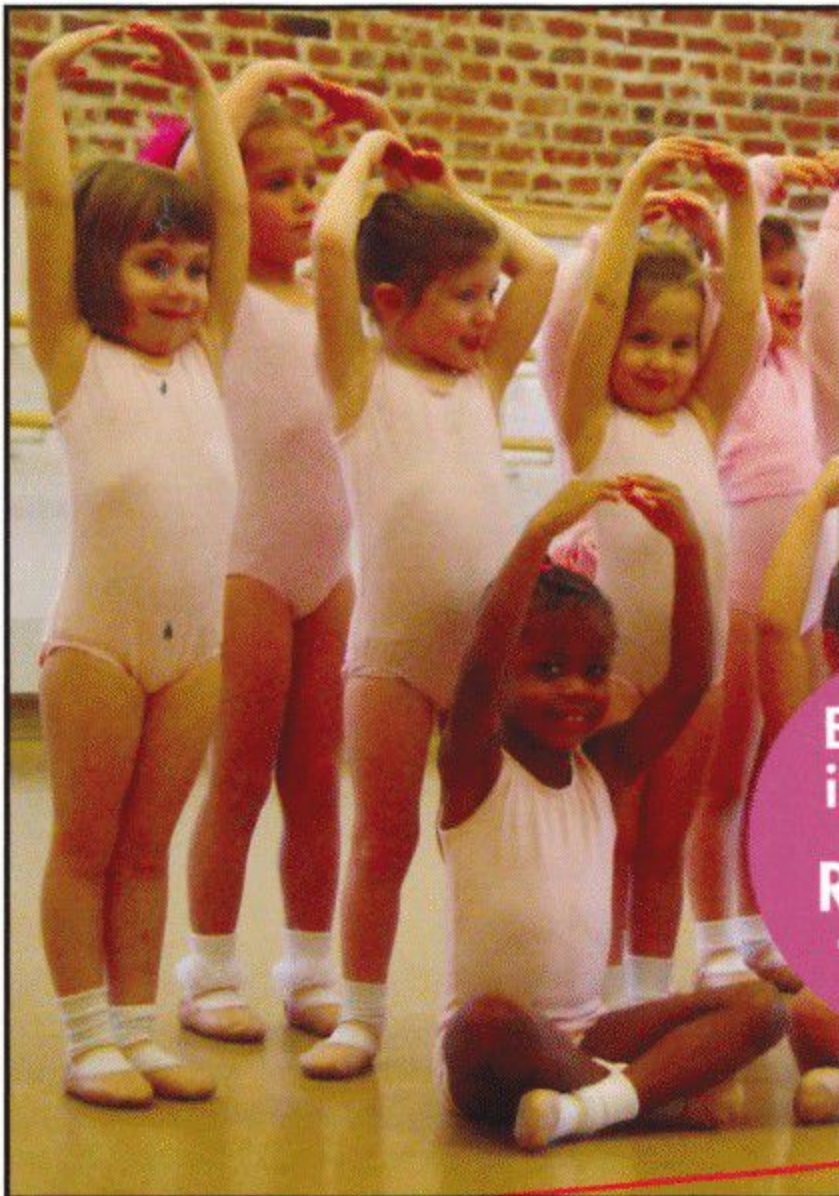
**Pippi Longstocking**

**is coming to WFT.**

**April 12 - May 12**

**JOIN THE FUN!**

Art © Matthew T. Lazure



## Boston Ballet School's Children's Program

### INSPIRING A LIFE-LONG LOVE OF DANCE

Boston Ballet School's Children's Program is an innovative program designed to encourage creativity, movement, and fun for toddlers to age 7.

Enrollment  
is ongoing  
**REGISTER  
TODAY!**

#### BOSTON STUDIO

19 Clarendon Street, Boston

#### NEWTON STUDIO

863 Washington Street, Newtonville

#### NORTH SHORE STUDIO

40 Leggs Hill Road, Marblehead  
in the Lynch/van Otterloo YMCA

# BOSTON BALLET SCHOOL

Beginners Welcome • 617.456.6333 • [www.bostonballet.org/school](http://www.bostonballet.org/school)

# Boston Parents PAPER



Wishing Wheelock Family Theatre another successful year! Pick up a *Boston Parents Paper* monthly issue or visit us online at [BostonParentsPaper.com](http://BostonParentsPaper.com)



Online Articles



Weekly eNewsletter



Family Events Calendar



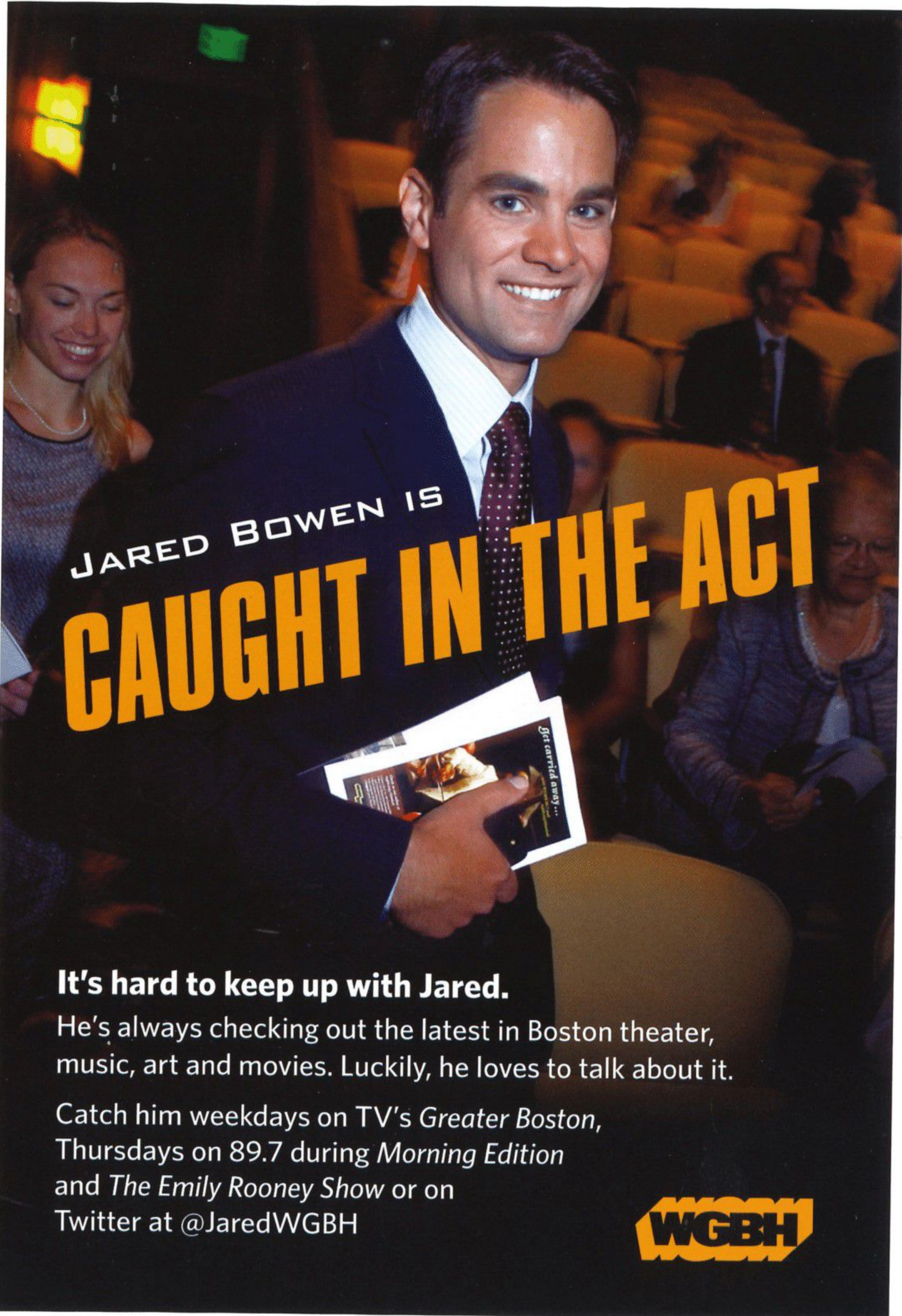
Contests!

Browse Our New  
Online Directories!

**Kids' Camps**

&

**Online  
Education &  
Enrichment  
GUIDE**



JARED BOWEN IS

# CAUGHT IN THE ACT

## It's hard to keep up with Jared.

He's always checking out the latest in Boston theater, music, art and movies. Luckily, he loves to talk about it.

Catch him weekdays on TV's *Greater Boston*, Thursdays on 89.7 during *Morning Edition* and *The Emily Rooney Show* or on Twitter at @JaredWGBH





**We're proud to support the voices of our community.**

When community members speak about supporting the arts, we respond to their call for making the possible actual. Valuing artistic diversity within our neighborhoods helps to unite communities, creating shared experiences and inspiring excellence.

Bank of America is proud to support Wheelock Family Theatre for its leadership in creating a successful forum for artistic expression.

Visit us at [bankofamerica.com](http://bankofamerica.com)

**Bank of America** 

© 2011 Bank of America Corporation  
SPN-108-AD | ARD1J1U2