

WHEELCK  
FAMILY  
THEATRE

CELEBRATING 30 YEARS

# The Secret Garden

January 28 - February 27

 AD)) Friday nights at 7:30, Saturday & Sunday matinees at 3:00

WFT's 30th anniversary season is sponsored in part by Bank of America.





☆☆☆☆☆

BUDDY HOPES  
TO STAR  
IN YOUR FAMILY.

☆☆☆☆☆

CALL 617.426.9170  
OR VISIT  
www.arlboston.org

Dogs like Buddy as well as cats, rabbits, guinea pigs, reptiles, birds and other wonderful pets are waiting to be adopted at the Animal Rescue League of Boston's Animal Care & Adoption Centers in Boston, Dedham and Brewster. They've been rehearsing for this role all of their lives and deserve top billing in your home. Go to [www.arlboston.org](http://www.arlboston.org) or call 617-426-9170 for more information on adoption, veterinary care as well as behavioral, rescue and law enforcement services at the Animal Rescue League of Boston.

**ANIMAL  
RESCUE  
LEAGUE  
of BOSTON**



*Helping animals since 1899.*



January/February 2011

Dear Theatre-goer,

Welcome to our production of *The Secret Garden*. Frances Hodgson Burnett's classic novel combines a child's fairy tale with a story of moral renewal, of learning to love oneself and others through love of the earth. With its central metaphor of bringing a garden back to life and its lovely natural imagery, it celebrates life without crossing into sentimentality. For me, the residue of meaning is in the message that people have the capacity to grow and change.

Our decision to write and to produce our own version of *The Secret Garden* was rooted in our view that the story is ideal for family audiences. Jane Staab and I created this adaptation with Wheelock Family Theatre and the Wheelock Family Theatre audience in mind. Our hope is that you will find watching the show as exciting as we have found creating it.

Halfway through our 30th season, we look forward to *Hansel and Gretel*, our collaboration with Boston Lyric Opera; our production of *Aladdin and the Wonderful Lamp*; and our gala season finale, the WHEEL Award. The 2011 WHEEL Award recipients, all of whom have enriched the lives of children and families through the arts, are: Janice Allen, teacher, storyteller, and performer; Victoria Rowell, television and film actress, author, and founder of the Rowell Foster Children's Positive Plan; and Kate Taylor, Director of Children's Programming at WGBH-TV, Boston. Be sure to save the date: Saturday, May 14. We hope you'll join us to celebrate their accomplishments and WFT's 30 years of providing professional, affordable theatre for all generations.

Sincerely yours,

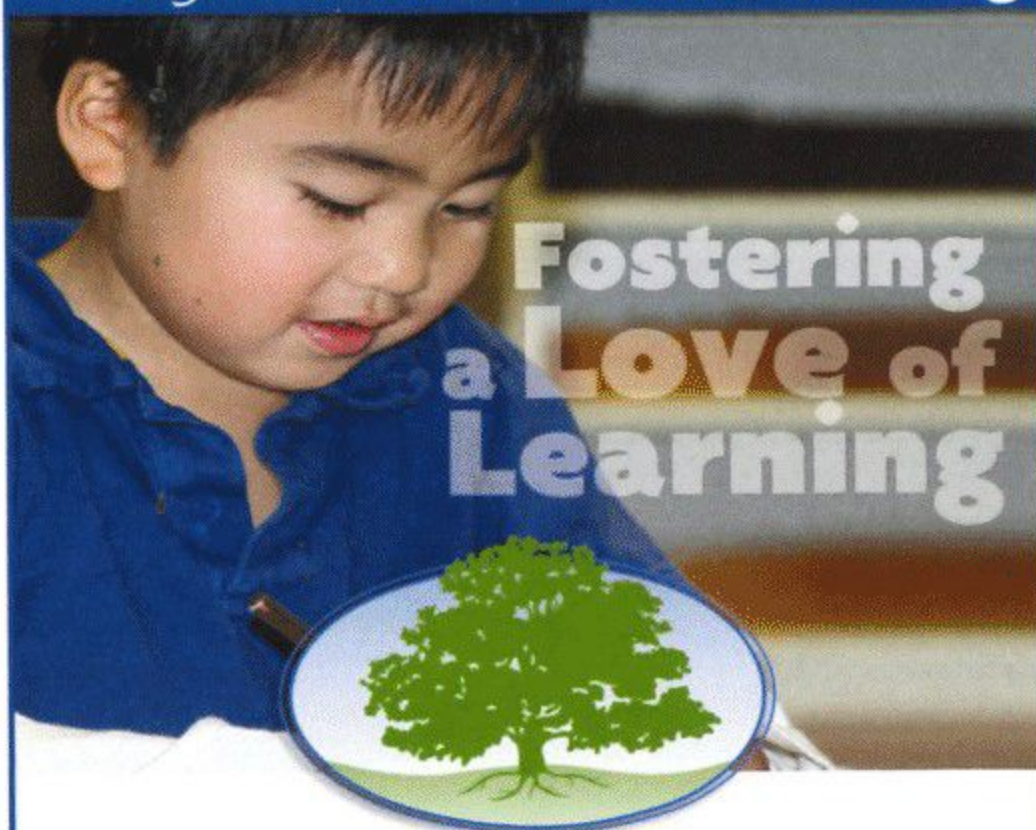
Susan Kosoff  
ProducerBoston Trust & Investment  
Management CompanyWalden Asset Management  
*Advancing sustainable business practices since 1975*

## Cheers to your 2010-2011 season!

Boston Trust & Investment Management Company  
One Beacon Street | Boston, Massachusetts 02108 | 617.726.7250 | fax: 617.227.2690



## Achieving Academic Excellence Through Individualized Learning



### NEWTON MONTESSORI SCHOOL

**A diverse community of children  
from toddlers – grade 6**

80 Crescent Ave • Newton Centre  
617-969-4488 • [NewtonMontessori.org](http://NewtonMontessori.org)



**Fun for Kids of All Ages**

667 Centre Street  
Jamaica Plain, MA

617-522-7800

[www.boingtoys.com](http://www.boingtoys.com)



**Andrew Barbato (Dickon)** returns to WFT having last been seen here as the Cat in the Hat in *Seussical* and Peter Pan in *Peter Pan*. Other favorite roles include Hot Blades Harry in *Urinetown* (Seacoast Rep) and Trevor in Bobby Cronin's new musical *Welcome to My Life* (NYC debut). Andrew is the artistic director of Cellar Door Stage, where he wrote the musical *ALICE* with his writing partner Lesley DeSantis. Their new holiday song was featured this year as part of the Lincoln Center's Holiday Concert in NYC. Andrew is a PROUD member of Actors' Equity!

**Valerie C. M. Ching (Audio Describer)** is pleased to be working with Andrea Doane on another Wheelock production! Other WFT description credits include: secondary describer for *Seussical*, *Beauty and the Beast*, *Lilly's Purple Plastic Purse*, *Tuck Everlasting*, *Inherit the Wind*, and *The Sound of Music*.

**Laurel Conrad (Choreographer)** is honored to be returning for her 7th season at WFT—where she has had the fortune to choreograph all of WFT's musicals and, occasionally, to perform. Her work with WFT has earned her two IRNE Awards for Best Choreography for *Seussical* and *Will Rogers Follies*. Love to Jane and Sue to whom she is very grateful for the incredible chance to work with an amazing theatre company and wonderful people, creating a second family for her. Congratulations on your 30th season! Also, much love to Molly, Nyssa, and the love of her life, Mario, for their support and encouragement. XOXO

**Andrea Doane (Audio Describer)**, a WFT supporter in different roles since its inception (30 years ago!), enjoys returning to be part of the audio-description team each year. Productions she has described at WFT include, among others, *The Miracle Worker*, *Inherit the Wind*, *Beauty and the Beast*, *To Kill a Mockingbird*, *Seussical*, and *HONK!* Andrea is also a teacher at Devotion School in Brookline and teaches in WFT's Education Program during the summer.



**Katherine Leigh Doherty (Mary)**, a junior at Noble & Greenough School, is thrilled to return to WFT in its 30th anniversary season, where she was last seen as Lilly in *Lilly's Purple Plastic Purse*, and previously appeared in *A Little Princess* as Lottie and *The Sound of Music* as Gretl. In 7th grade, Katherine originated the role of Jane Banks in the Broadway production of *Mary Poppins*; she returned to Broadway last year to reprise the role of Fredrika in *A Little Night Music*, alongside the legendary Angela Lansbury, Catherine Zeta-Jones, Elaine Stritch, and Bernadette Peters. She has participated in two Broadway workshops of new musicals—Andrew Lippa's *A Little Princess* (Lottie) and *Cassandra's Angel* (title role)—and was an original cast member of the first national tour to Boston of Irving Berlin's *White Christmas* (Susan Waverly). Other favorite theatre credits include *Avenue Q* (Kate Monster), *Bat Boy the Musical* (Shelley Parker), *Annie* (title role), *Into the Woods* (Little Red), and *Joseph* (Narrator). She looks forward to her 6th summer at Stagedoor Manor. Katherine sends a special thanks to Jane and Sue, and to all the dedicated supporters who make WFT a Boston gem.

**Priscilla Fales (Assistant to the Director)** is thrilled to be part of this production of *The Secret Garden*. She is eternally grateful to Sue and Jane for the opportunity to be associated with this remarkable organization for the last 29 years. When not at WFT, Priscilla teaches 3-year-olds at the Beacon Hill Nursery School. She lives and shovels snow in Cambridge. Congratulations to WFT on 30 years of wonderful theatre.

**Ellis Gage (Colin)** has had a passion for musical theatre since the age of five and discovered a passion for classical music over the past two years. This is his first production at WFT. Most recently, Ellis has worked with Tony Award-nominated director Graziella Danielle as James in the world premiere of the new Benj Pasek and Justin Paul musical *James and the Giant Peach* at the Goodspeed Opera House in CT. He has also been a featured soloist in numerous NY cabaret shows highlighting the brightest young stars of Broadway. Locally, Ellis has performed principal and featured roles in numerous musicals, including *Annie*, *Get Your Gun*, *Beauty and the Beast*, *Les Misérables*, *Pinocchio*, *Into the Woods*, *Cinderella*, and *Once Upon a Mattress*. After spending years studying with the Handel & Haydn Vocal Apprenticeship Program and various youth opera programs, he has performed as a soloist for multiple classical pieces, as well as operas and operettas, including *H.M.S. Pinafore*, *Pirates of Penzance*, *Marriage of Figaro* and *Fairy Queen*. Ellis is a member of the Broadway

(continued on page 6)

# AMBIENCE<sup>Boston</sup>

INTERIOR DESIGN  
FLORAL DESIGN

**E. Ann Whittington**  
Proprietor

P.O. Box 181232  
Boston, Massachusetts 02118  
Tel. (617) 267-3049  
E-mail: annwhittington@comcast.net



Providing both buyers and sellers with the highest quality professional real estate brokerage services available.

# Chobee Hoy<sup>associates</sup>



18 Harvard Street  
Brookline, Massachusetts  
02445

■ 617 739 0067

## Sarteano (SI) Southern Tuscany



Be our guests in the medieval center of this lovely Tuscan hill town near Montepulciano.  
Restored townhouse: 3 bedrooms, 2 baths, kitchen/dining/living rooms  
\$900 per week. Photos and info at <http://www.italyhousescout.com/sarteano/>

# Roffi

Salon & Day Spa

Roffi congratulates  
Wheelock Family Theatre  
for its continued success.

134 Newbury St. Boston MA 02116  
617.536.9600 [info@michaelroffi.com](mailto:info@michaelroffi.com)





Communication  
Arts Group, Inc.

*Proud to support  
Wheelock  
Family Theatre*

Providing business with brand,  
creative, graphic design and  
web development services.

cagroup.com

401.861.1000

*Proud to be  
affiliated with  
the Wheelock Family Theatre  
and  
the Wheelock College  
Community.*

**GOOD LUCK  
AND  
BREAK A LEG!**

**Sodexo**

WHO's WHO (continued from page 5)

Youth Ensemble and has worked with the acclaimed composer/conductor Glen Roven. He studies voice with the Amelia DeMayo Group in NYC.

**Lindsay D. Garofalo (Production Stage Manager)** is very excited to be returning to WFT for her 3rd season as stage manager. Some of her favorite shows that she has been a part of are *Les Misérables*, *Seussical*, *Hedda Gabler*, *Romeo and Juliet*, *The Sound of Music*, *Noises Off*, *Macbeth*, *HONK!*, and *Living Out*. She would like to give her family a big thank you for always supporting her, and to Dan for always keeping her calm.

**Russell Garrett (Craven)** has performed in the Broadway productions and National Tours of *Seven Brides for Seven Brothers*, *42nd Street*, and all four versions of *The Scarlet Pimpernel*. His many American, Canadian, European, and Japanese touring productions include Hal Prince's *Show Boat*, *42nd Street*, *My Fair Lady*, and several tours of duty with *A Chorus Line*. Off-Broadway appearances include the Holocaust-set drama *Bent* and the original productions of *Elegies for Angels*, *Punks*, and *Raging Queens*. He is best remembered for creating the role of Miss Texas in the hilarious Off-Broadway hit *Pageant*. On local stages, Russell has been seen at the Stoneham as Albert/Jonathan in *The Sparrow* and Col. Pickering in *My Fair Lady*; Zach in *A Chorus Line* for Reagle; and Ernst in *Cabaret* and Roger Debris in *The Producers* at the Ogunquit Playhouse in ME. As a director and choreographer, he has staged acclaimed productions of *Anything Goes* and *Chicago* for Skylight Opera in Milwaukee; *Beehive!*, *High School Musical*, and *Shout!* for the Ogunquit; *The Full Monty* for Theatre by the Sea in RI; and *Cabaret*, *Chicago*, and *Tommy* for the Arts Center of Coastal Carolina on Hilton Head Island, SC. This is Russell's debut at WFT, and he is thrilled to be here!

**Jennifer Beth Glick (Martha)** is thrilled to return to WFT after her IRNE Award-winning performance as Gertrude in *Seussical*. Also with WFT, Jennifer appeared as Wendy in *Peter Pan*, Sara in *A Little Princess*, and Mary in the 1993 production of *The Secret Garden*. Regionally, she has been seen as Kim in *Miss Saigon* and Ado Annie in *Oklahoma!* (Company), Edna Arkins in *The Good Times Are Killing Me* (SpeakEasy and WFT), Little Red Ridinghood in *Into the Woods* (Worcester Forum), and June in *Gypsy* (Publick). Nationally, Jennifer toured with *Fiddler on the Roof* starring Theodore Bikel and was an original cast member of *Annie 2: Miss Hannigan's Revenge* (Kennedy Center and Goodspeed). A graduate of Harvard University and UVA Law School, Jennifer is an estate planning attorney and clinical instructor at Harvard Law School.



She just released the children's CD *Musicals for Munchkins*, a collection of kid-friendly showtunes, to benefit Boston's Home for Little Wanderers. For more information: [www.musicalsformunchkins.com](http://www.musicalsformunchkins.com).

**Jonathan Goldberg (Musical Director, Arranger, Orchestrator)** is thrilled to be back at WFT, where he has been musical director for at least 14 productions beginning with *Cinderella* in 1995. Earlier this season Jon was musical director for *The 25th Annual Putnam County Spelling Bee* (Lyric) and *Nine* (Emerson Stage). He has received four IRNE awards for Best Musical Director for his work at the Lyric and he has been associated with 3 Elliot Norton Award-winning productions with the Lyric and NSMT. Other recent productions include *Into the Woods* and *Illyria* at Emerson, *Follies* at the Lyric, and *Jane Eyre* with the Lyric First Stage summer teen program. Jon was recently promoted to a full-time theatre faculty position at Emerson, where he will be musical director for *Man of La Mancha* this April, with guest artist Tim Smith (Daddy Warbucks in WFT's *Annie* earlier this season). A very special thanks to Jane and Sue for inviting him to collaborate with them on the music for this production.

**Neil Gustafson (Ben)** has previously performed at WFT as Yorick in *The Little Mermaid*, The Inquisitor in *Saint Joan*, Mr. Sir in *Holes*, Henry Drummond in *Inherit the Wind*, King Alonso in *The Tempest*, and Teddy Lloyd in *The Prime of Miss Jean Brodie*. For eight years, Neil traveled the highways and byways of New England to perform a one-man show, *Isaiah Thomas—Patriot Printer*, produced by the American Antiquarian Society. Internationally, he has appeared in works by Shakespeare and Chekhov. On TV, he has played roles on *The Practice*; *Spenser: For Hire*; *A Midwife's Tale*; and *Black Bellamy's Treasure*. On the big screen, Neil played Yuri Spinov in *Next Stop, Wonderland*. His favorite role is as the father of his lovely daughter, Katherine, and lively son, Aidan.

**Susan Kosoff (Playwright, Lyricist, Director)**, a founder of WFT and a professor of theatre and education at Wheelock College, has directed many productions here. Among her favorites are *Lord of the Flies*, *Inherit the Wind*, *Holes*, and *A Tale of Two Cities*. Susan has written many plays, often in collaboration with Jane Staab, which have been produced here and at other theatres around the country. Her recent 10-minute play *Waiting for Gretchen* appears in the *Boston Theater Marathon XI 2009 Anthology*. Other writing for the theatre includes *The Young Actor's Book of Improvisation*, *A Little Princess*, *Let There Be Light*, *O Happy Day*, and *The Beanstalk, the Giant, and Jack*. Susan serves on the board of StageSource, New England's alliance for theatre artists and producers.

(continued on page 8)

# Stellabella Toys



Did you know that Stellabella Toys has a Thank You Program? For every \$200 in full price merchandise you buy at one of our four locations, you'll receive a \$10 reward coupon. It's one way we say "Thank You" for shopping at Stellabella Toys.

1360 Cambridge Street  
(Inman Square)

Cambridge, MA 02139

(617) 491-6290

[www.stellabellatoys.com](http://www.stellabellatoys.com)

# WHEELOCK FAMILY THEATRE

CELEBRATING 30 YEARS

The Wheelock Family Theatre  
Advisory Board  
wishes to thank  
Ed Feather and  
PARTNERS+simons,  
as well as the Yawkey Foundation,  
for the new WFT logo and website!

professional, affordable theatre for all generations

[www.WheelockFamilyTheatre.org](http://www.WheelockFamilyTheatre.org)



# BEST WISHES and CONTINUED SUCCESS

from

**LILLIAN GONZALEZ,  
CPA, MST, CSEP**

14 Page Terrace  
Stoughton, MA 02072  
(781) 344-1040  
FAX (781) 344-4449

[www.go-cpas.com](http://www.go-cpas.com)

## GONZALEZ & ASSOCIATES P.C.

CERTIFIED PUBLIC ACCOUNTANTS

- ACCOUNTING
- AUDITING
- TAXES
- FINANCIAL PLANNING
- RETIREMENT PLANNING
- ESTATE PLANNING



**Carolle Photography**  
Photography for the Performing Arts

headshots • productions • events • CDs • portraits

Kippy Goldfarb

617.946.4664 [carollephoto@aol.com](mailto:carollephoto@aol.com)

WHO's WHO (continued from page 7)

**Matthew T. Lazure (Set Designer)** has designed sets for the Gold Dust Orphans's productions of *Medea* (Eliot Norton nomination), *All About Christmas Eve*, and *Whizzin'*; Provincetown Theatre (*Santaland Diaries*); Pee Wee Players of Provincetown (*The Absolutely Amazing Adventures of Heidi*); and WFT (*HONK!*, *Lilly's Purple Plastic Purse*, *Charlotte's Web*). Matthew's costume designs have been seen on the WFT stage in *Beauty and the Beast*, *Peter Pan*, *Saint Joan*, and *Snow White* (IRNE nomination). A Mass College of Art graduate, he shows his fine art in Boston and Provincetown. [www.matthewlazure.com](http://www.matthewlazure.com)

**Marjorie Lusignan (Props Designer)** is a Rhode Island native, enjoying her 3rd season of taking props to a whole new level at WFT, beginning with *Seussical*. She continues to create things beyond her wildest expectations, and shares her skills and talents with young people as a member of WFT's Education Program faculty.

**Franklin Meissner, Jr. (Lighting Designer)** is pleased to join the WFT family. His lighting design can be seen in the Lyric's current production of *The Understudy*. Recently, his lighting was featured in the world premiere production of *The Wrestling Patient* at SpeakEasy. He also recently designed *Hot Mikado* at the New Rep, for whom he has also designed 17 other productions, including the critically acclaimed *The Wild Party* (IRNE nomination), *Cabaret*, *Dessa Rose*, *Sweeney Todd* (IRNE Award), *Into the Woods*, *Ragtime*, and *Moby Dick* (IRNE Award). Last year, he designed the lighting for *According to Tip* at the Stuart Street Playhouse, as well as its original, sold-out run in Watertown. His work has been seen Off and Off-Off Broadway in NYC, at Boston Playwrights' (IRNE Award), the Stoneham (IRNE nomination), the Company in Norwell, NSMT, South Shore Music Circus, Sanders Theatre, various corporate events and colleges around the state, and 40 Carnegie Hall performances. A member of United Scenic Artists, he lives with his wife Rachel and their daughter Abby in Hingham. For more information: [www.FranklinMeissner.com](http://www.FranklinMeissner.com).

**Roger J. Moore (Sound Designer)** has been employed by CBS Radio – Boston for over 20 years and is currently the Assistant Production Director and commercial voice of 98-5 The Sports Hub. He has been featured on various regional and national radio spots (Blue Cross Blue Shield, St. Joseph's College, Pontiac) and enjoys freelance video production. He is currently the stage manager and sound designer for The Gold Dust Orphans (*Phantom of the Oprah*, *All About Christmas Eve*, *Death of a Saleslady*), and has worked with WFT since 2008.



**Jacqui Parker (Mrs. Medlock)**, an award-winning actor, director, and playwright, recently received critical acclaim for her role as Billie Holiday in *Lady Day at Emerson's Bar and Grill*, at the Lyric. She was also seen as Mrs. Keckley and Mrs. Thomas in the Huntington's *A Civil War Christmas*, for which she received an IRNE Award for Best Supporting Actress. Other credits include Mother in *Breath, Boom* (Huntington) and May N'Kame in *Going to St. Ives* (Gloucester Stage). Jacqui was recognized with an IRNE Award for her role as Caroline in *Caroline, or Change* with SpeakEasy. Select directing credits include *Once on This Island*, *Mother G*, *The Miracle Worker*, *The Bubbly Black Girl Sheds Her Chameleon Skin*, and *The City Spotlights Neighborhood Ensemble*, for which she wrote/directed *Roxbury On Sacred Ground* at the Shubert. Jacqui is a Playwright Fellow at the Huntington, Artistic Director of the Our Place Theatre Project, and the founder of Boston's Annual African American Theatre Festival. She received the 2004 Boston Theatre Hero Award given by StageSource and the 2009 Drylongso Award by Community Change for her role in the struggle against racism.

**Christopher S. Robinson (ASL Interpreter)** is the staff ASL/English Interpreter for BU, where he coordinates ASL-interpreted plays. He works frequently as a performing arts interpreter throughout NE. Much of his work as an interpreter has been influenced by his proximity to the late August Wilson; Christopher has interpreted productions of Wilson's *Fences*, *King Hedley II*, *Radio Golf*, *Jitney* and *Gem of the Ocean*. Among his ASL-interpreted musical production credits are *A Year with Frog and Toad*, *Seussical*, *Grease*, *The Lion King*, *Miss Saigon*, *Avenue Q*, *Rock of Ages*, and *Godspell*.

**Aimee L. Schiffman-Robinson (ASL Interpreter)** is a freelance interpreter who specializes in a variety of settings, with performing arts being her favorite. Some of the productions she has interpreted include: *Seussical* and *HONK!* (WFT); *The Producers* (the Colonial); *A Year with Frog and Toad* and *Metamorphoses* (Weston Playhouse); *Annie* and *Peter Pan* (the Wang); *King of the Jews* and *The Birthday Party* (BU School of Theatre); *Avenue Q*, *Young Frankenstein*, and *Wicked* (Broadway Across

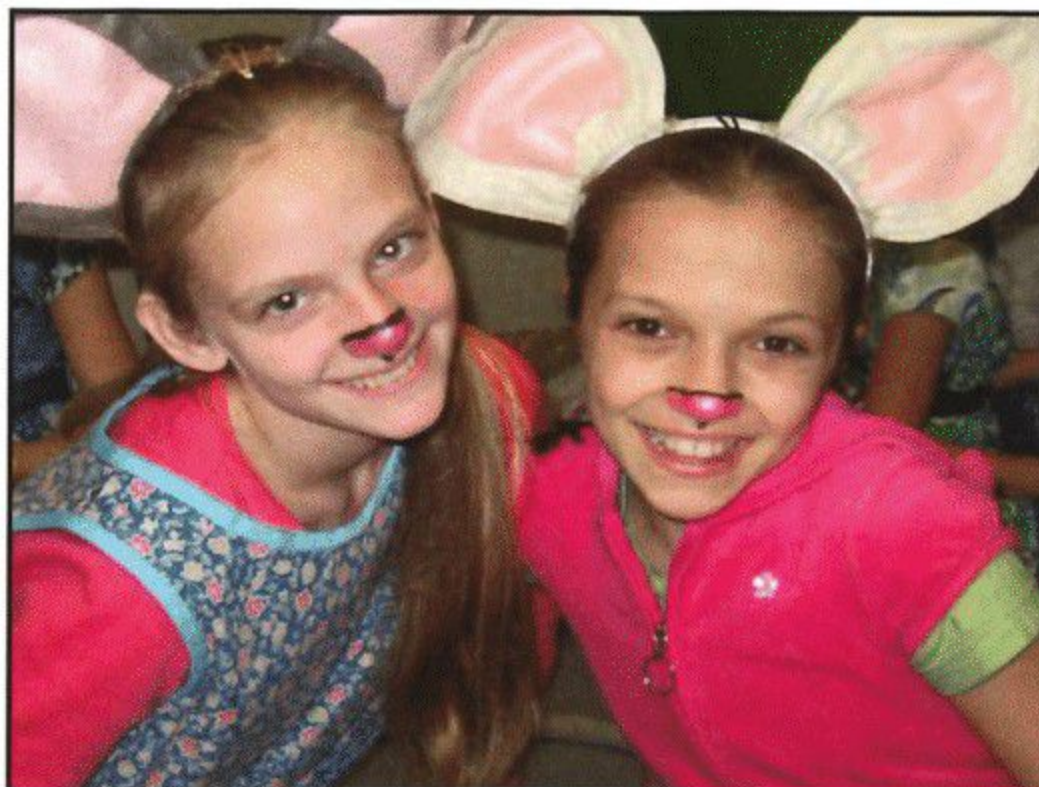
(continued on page 17)

Thank you to  
**Cabot Cheese**  
for supporting our mission.

## Newbury Comics



[www.newburycomics.com](http://www.newburycomics.com)



**Did you know . . .  
Wheelock Family Theatre has  
special birthday packages?**

Have your party in a private room.  
Take a backstage tour.  
Enjoy a theatre workshop.

Reduced ticket prices are also available for birthday groups!

For additional information:

617.879.2300

[tickets@wheelock.edu](mailto:tickets@wheelock.edu)



# The Secret Garden

Based on the novel by Frances Hodgson Burnett

BOOK & LYRICS  
**Susan Kosoff**

MUSIC  
**Jane Staab**

MUSICAL DIRECTOR & ORCHESTRATOR  
**Jonathan Goldberg**

DIRECTOR  
**Susan Kosoff**

CHOREOGRAPHER  
**Laurel Conrad**

SET DESIGNER  
**Matthew T. Lazure**

LIGHTING DESIGNER  
**Franklin Meissner, Jr.**

COSTUME DESIGNER  
**Stacey Stephens**

SOUND DESIGNER  
**Roger J. Moore**

PROPS DESIGNER  
**Marjorie Lusignan**

PRODUCTION STAGE MANAGER  
**Lindsay D. Garofalo\***

ASL INTERPRETERS  
**Christopher S. Robinson**  
**Aimee L. Schiffman-Robinson**

AUDIO DESCRIBERS  
**Valerie C. M. Ching**  
**Andrea E. Doane**

## THE CAST

Mrs. Medlock	<b>Jacqui Parker*</b>
Mary Lennox	<b>Katherine Leigh Doherty*</b>
Ben Weatherstaff	<b>Neil Gustafson*</b>
Martha Sowerby	<b>Jennifer Beth Glick*</b>
Mr. Archibald Craven	<b>Russell Garrett*</b>
Dickon Sowerby	<b>Andrew Barbato*</b>
Master Colin Craven	<b>Ellis Gage</b>
Nurse	<b>Jane Staab*</b>

The place is Misselthwaite Manor, Yorkshire, England. The time is 1849.  
THE SECRET GARDEN is in two acts. There will be one intermission between the acts.

A non-toxic atmospheric haze effect is used throughout the production.

Ask the House Manager for individual sound enhancement devices.  
The taking of photographs and use of recording devices is strictly forbidden.  
Please turn off all electronic devices. Please, no eating or drinking in the theatre.

Open captioning provided in collaboration with c2 (caption coalition) inc, [www.c2net.org](http://www.c2net.org).

Wheelock Family Theatre is a member of StageSource, the Alliance of Theatre Artists and Producers; the Theatre Artists' Marketing Alliance (TAMA); and the Consortium of Boston Area Children's Theatres (CBACT).



\*Member of Actors' Equity Association, the Union of Professional Actors and Stage Managers in the United States. The Wheelock Family Theatre is operating under the terms of a Developing Theatre's Program of Actors' Equity Association. The contract used is a Letter of Agreement.





# MUSICAL PROGRAM

## ACT ONE: Winter

- Scene 1: A side gate, late at night  
**No, I Don't Like It**.....Mary, Mrs. Medlock, and Ben
- Scene 2: Mary's sitting room, the next morning  
**The Moor**.....Mary, Martha
- Scene 3: The gardens, later the same morning  
**Tha' an' Me Are Alike**.....Ben, Mary
- Scene 4: Mary's sitting room, the next morning  
**But for the Garden**.....Martha
- Scene 5: The gardens, moments later  
**My Friend**.....Mary
- Scene 6: Mary's sitting room, a morning one month later  
**If I Have a Spade**.....Mary, Martha
- Scene 7: The gardens, the same day  
**Good Morning Sunshine**.....Ben, Mary, Dickon, Martha  
**I've Stolen a Garden**.....Mary, Dickon
- Scene 8: Mary's sitting room, later the same day  
**A Bit of Earth**.....Mary, Mr. Craven

## ACT TWO: Spring

- Scene 1: Mary's sitting room at night
- Scene 2: Colin's room, moments later  
**A Secret Garden**.....Mary  
**Dreams**.....Mary
- Scene 3: Mary's sitting room, the next morning
- Scene 4: Colin's room, moments later  
**If You Are Ill**.....Colin
- Scene 5: The garden and Colin's room, a few days later  
**Let's Do It Now**.....Dickon, Mary, Colin
- Scene 6: Colin's bedroom, later the same day  
**I Want a Turn**.....Colin
- Scene 7: The gardens, later the same day  
**Look at Me**.....Colin, Mary, Dickon, Ben
- Scene 8: Mary's sitting room and the garden, a month later  
**Look at You (reprise)**.....Company

## MUSICAL ENSEMBLE

Keyboards/Conductor – Jonathan Goldberg

Reeds – Louis Toth  
 (alternate: Ryan Yure)

Horn – Meredith Gangler

Cello – John Bumstead  
 (alternate: Javier Caballero)

Percussion – Gary Spellissey





Inspiring  
Learning,  
Exceeding  
Expectations.

## British School of Boston

Academically rigorous and internationally focused, with an individualized approach to learning. Now accepting children 2 years 9 months to 18 years.

Open Houses:	Thursday, November 11	9:30-11:00 a.m.
	Sunday, December 5	1:00-3:00 p.m.
	Wednesday, January 12	9:30-11:00 a.m.

617.522.2261

admissionsbsb@britishschool.org • www.britishschoolofboston.org

# baystateparent

Massachusetts' Premier Magazine For Families

## Your Time: HOW SWEET IT IS!

Your FREE copy of baystateparent is your time to find hundreds of family events and activities each month in our award-winning calendar. It's your place for local parenting resources, support and humor!

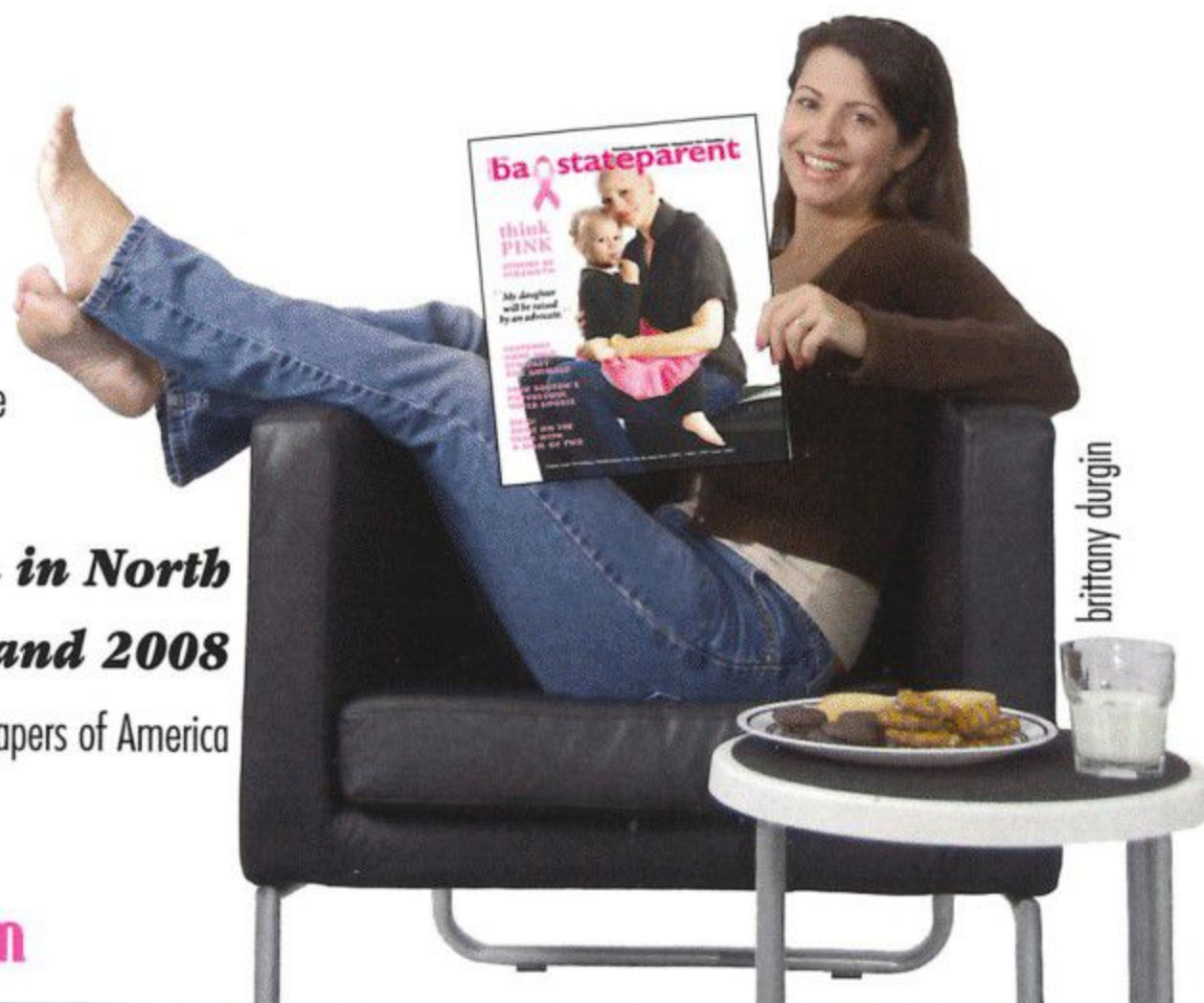
Available at over 1,000 locations including iParty, Finagle a Bagel, Panera Bread, Rugged Bear and more throughout Central MA, MetroWest and Greater Boston.

**Voted Best Parenting Publication in North America 2004, 2006, 2007 and 2008**

- Suburban Newspapers of America

**508-865-7070**

**www.baystateparent.com**



brittany durgin



## Wheelock Family Theatre Advisory Board

**Amy Brakeman**

Management consultant to youth development organizations in Boston and South Africa, Wellesley

**Carola Cadley**

Associate VP, Corporate Development and Marketing, Children's Hospital Trust, Boston

**Carole Charnow**

President and Chief Executive Officer, Boston Children's Museum

**Eleanor Chin**

Principal, Clarity Partners Coaching and Consulting, Jamaica Plain

**Edward F. Coakley**

President (retired), E.F. Coakley and Associates, Boston

**John (Jeff) Coburn, Co-Chair**

Managing Director, Coburn Consulting, Boston

**Ceronne B. Daly**

Director, Office of Pre-Collegiate and College Access Programs, Wheelock College, Boston

**Rosario A. Dominguez**

Vice President of Programs, Community Servings, Boston

**Scott Edmiston**

Director, Office of the Arts, Brandeis University, Waltham

**Ed Feather**

Senior Brand Director, PARTNERS+simons, Boston

**Andrea (Andi) Genser**

Executive Director, WE CAN Corporation, Harwich Port

**Lillian Gonzalez**

Principal, Gonzalez & Associates P.C., Stoughton

**Alicia Gordon**

Partner, Gordon Lower Public Relations, Boston

**Charles (Chuck) B. Gordon**

Senior VP and Chief Development Officer, City Year, Inc., Boston

**Elvernoy (Albie) Johnson**

State Librarian, State Library of Massachusetts

**Steven M. Key, Esq.**

Attorney, Law Office of Steven M. Key, Jamaica Plain

**Robin Mount, Co-Chair**

Director, Office of Career Services, Harvard University, Cambridge

**Meegan Turet**

Fine Arts Chair, Academy of the Pacific Rim Charter Public School, Hyde Park

## Wheelock Family Theatre Volunteers

Hats off to our wonderful volunteers—we couldn't do it without you!

Opportunities for volunteering at WFT abound;

for more information, contact Charles G. Baldwin, 617.879.2147, cbaldwin@wheelock.edu.

Shelita Bailey, Jim Carr, James Carroll, Alyssa Collier, Kacie Devine, David Dunwell, Liz Fuller, Dot Gorenflo, Kate Hendrix, Andrea Lavoie, Amber Leet, Amanda Mallett, Megan Malloy, Ashley McDougal, Rachel McManus, Megan Murphy, Janet Randall, Pauline and Terry Ryan, Brooke Sandford, Hannah Smith, Lindsay Sullivan, Jasmin Taylor, Linda Chin Workman



## Wheelock Family Theatre STAFF

Producer	<b>Susan Kosoff</b>
Casting Director	<b>Jane Staab</b>
Education Program Director	<b>John Bay</b>
Publicity and Marketing Director	<b>Charles G. Baldwin</b>
Assistant to the Producer/Grantswriter	<b>Kay Arden Elliott</b>
Development Consultant	<b>Janet Bailey</b>
Assistant Education Program Director	<b>Lisa Rowe-Beddoe</b>
Audience Engagement Coordinator	<b>Marianne Adams</b>
Box Office Supervisor	<b>Stephen Reinstein</b>
Social Media Consultant	<b>Beth Peters</b>
Technical Director	<b>Matthew T. Lazure</b>
Associate Technical Director	<b>Brian Masters</b>
Technical Assistants	<b>Marjorie Lusignan, Eric Rudisaile</b>
Assistant to the Director	<b>Priscilla Fales</b>
Costumer	<b>Lisa Simpson</b>
Assistant Costumer	<b>Jennie Hudson-Bryant</b>
Hair and Make-up	<b>Rachel Sumal</b>
ASL Consultant	<b>Kristin Johnson</b>
Captioning	<b>Ruth Kahn</b>
Master Electrician	<b>Andrew Andrews</b>
Scenic Carpenters	<b>Cary Cahill, Ricardo Engermann, Caitlin Harrison, Doughty Leigh, Emily Teague, Mark Vallone, Mac Young</b>
Concessions	<b>Jessica Romero, Frank Romero</b>

### EDUCATION PROGRAM FACULTY

Kortney Adams, Charles G. Baldwin, Dana Jay Bein, Maggie Beneke, Christy Betit, Danny Bolton, Jennifer Buller, Amie Cazell, Robin Connors, Laurel Conrad, Laura DeGiacomo, Andrea Doane, Donna Folan, Ellie Friedland, Lorraine Gilman, Jeri Hammond, Hannah Husband, Angie Jepson, Eliza Lay, Marjorie Lusignan, Brian Masters, Jaime Montesano, Grace Napier, John O'Neil, Beth Peters, Sophie Rich, Ilyse Robbins, M. Lynda Robinson, Lisa Rowe-Beddoe, Robert Serrell, Noah Starr, Fran Weinberg, Alan White

### CREWS

Sonia Belkin, Lauren Bird, Mia Cianciarulo, Gamy Cilien, Dori-Ann Delatizky, Orbelino Erazo, Marisa Garcia, Jessica Grant, Deana Grinage, Kayla Howell, Elbert Joseph, Anjali Lappin, Robin Liberty, Bielka Liriano, Valeria Mahillon, Kaitlin Mahon, Sharrone Marcano, Christie Millar, Michelle Murdock, Elizabeth Ortega, Alexandra Pimentel, Jenn Provoost, Kiana Robinson, Alicia Selman, Rachel Sumal, Carisa Weaver, Bunky Williams, Kayloni Williams

### WORK/STUDY STUDENTS AND INTERNS

Jamie Aznive, Lauren Bird, Marvin Brow, Mia Cianciarulo, Gamy Cilien, Christina Cooper, Katelyn Coty, Kaley Dolen-McCarthy, Orbelino Erazo, Eve Evens, Adlai Faigen, Jessica Grant, Deana Grinage, Giselle Harris, Bridget Hoarty, Kayla Howell, Yolanda James, Diana Kilguss, Anjali Lappin, Colin Lee, Regina Levkovich, Bielka Liriano, Kaitlin Mahon, Sharrone Marcano, Christie Millar, Nural Mohammed, Elizabeth Ortega, Alexandra Pimentel, Kiana Robinson, Alicia Selman, Daquane Simmons, Jake Sims Speyer, Rachel Sumal, Catherine Torres, Bunky Williams, Nicole Zina

### SPECIAL THANKS

Ashley Arseneau; Shawn P. Cotter; Sarah deLima for accent coaching; Kimberly A. Elliott for the study guide; Michelle Ferrari; Marc Guerrette for flower design; the Huntington Theatre Company; Sandra Jonas; Emily Kosoff; Joni Liberman for poster design; Heather Lowe; Jacqueline Lusignan; Susan Mackey, Mike Fesko, Frank Romero, and members of the Wheelock College Facilities staff; Alana Mahoney; Tony Mosley and the staff of the Service Center; Stephanie Paradiso; Tony Paradiso; Jen Shin; Nancy Viall Shoemaker; Wooden Kiwi Productions; and the Office of the President and members of the Wheelock College community who have made this production possible.

*We wish to thank all the people who have joined with us since the program went to press.*



## 30th Anniversary Campaign

For the past 30 years, Wheelock Family Theatre has been bringing quality professional theatre to children and families from communities throughout the Boston area. Now, as we celebrate our 30th anniversary, we think this is a perfect opportunity to look to the future and consider how best to sustain the Theatre and to set the stage for growth.



Our 30th Anniversary Campaign invites patrons to make a multi-year commitment to support WFT with a donation in each of the next three years. Funds will be used to support sustainable investments in the people and infrastructure we need to provide more and even better experiences for children and families in the future.

We are grateful to the 34 generous patrons who have already demonstrated their commitment to professional, affordable family theatre, and shown their confidence in Wheelock Family Theatre.

Won't you consider becoming a part of this dedicated and generous group? Please contact Kay Elliott at 617.879.2252 for more information.

### LEADERSHIP GIFTS

(\$2,500 and up per year)

Anonymous  
Mr. and Mrs. Robert G. Anderson  
Amy and Ed Brakeman  
Carola Cadley  
Catherine and Jeff Coburn  
Gonzalez & Associates, P.C.  
Hoil Kim and Erin Gilligan

Susan Kosoff  
Melissa and Alan Miller  
The Mussafer Family  
Sharon Rich and Nancy Reed  
Brooke and Neal Sandford  
Jane Staab

### SUPPORTING GIFTS

(\$500-\$2,499 per year)

Anonymous  
Janet Bailey  
Lauren and George Doherty  
Priscilla Fales  
Andrea Genser

The Kaim Family  
Robin Mount  
Greg Nash  
Elizabeth and Chip Sheeran



## Wheelock Family Theatre Supporters

We are proud of our commitment to keep the quality of our productions high and our ticket and tuition prices affordable. But we can't do that without the support of the generous institutions and individuals who value our work and understand the contribution we make to the community. Ticket income covers only about two-thirds of our costs—won't you help us cover the other third? To make a donation, visit [www.wheelockfamilytheatre.org](http://www.wheelockfamilytheatre.org) or contact Kay Elliott at 617.879.2252.

### Institutional Supporters

Actors' Equity Foundation  
Bank of America  
Boston Parents Paper  
Google  
Massachusetts Cultural Council  
PARTNERS+simons  
Peabody Foundation  
Carl and Ruth Shapiro  
Family Foundation  
Temple Israel  
Wheelock College  
Yawkey Foundation

### Individual Donors

#### Angels (\$1,000 and up)

Anonymous (3)  
Mr. and Mrs. Robert G. Anderson  
Atlantic Philanthropies  
Director/Employee Designated Gift Fund  
Linda Cabot Black Foundation  
Amy and Ed Brakeman  
Carola Cadley  
Catherine and Jeff Coburn  
Sally Reeves Edmonds  
Gonzalez & Associates, P.C.  
Alicia Gordon  
Hoil Kim and Erin Gilligan  
Susan Kosoff  
Carol and Gordon Marshall  
Melissa and Alan Miller  
Robin Mount  
The Mussafer Family  
Greg Nash  
Suzanne R. Newton  
Sharon L. Rich  
Brooke and Neal Sandford  
Jane Staab

#### Leading Players (\$500-\$999)

Anonymous  
Janet Bailey  
Sarah and Richard deLima  
Bob Doane  
Lauren and George Doherty  
Priscilla Fales  
Ellie Friedland  
Andrea Genser  
Leslie E. and Charles B. Gordon  
The Kaim Family  
Nicky and Paige L'Hommedieu  
Lisa McElaney and Abe Morell  
Chip and Elizabeth Sheeran

### Supporting Players (\$100-\$499)

Anonymous (2)  
Amy Almeida  
Charles G. Baldwin  
Sanjay Banker and Sejal Patel  
Diane and Michael Baxter  
John Bay  
Alan and Debbie Bieri  
Danny Bolton  
Debra Borkovitz  
Cheryl and Leonard Brown  
Marla Choslovsky and Paul Greenberg  
Keena Clifford  
Ellen Colton  
Suzanne Costello  
Robert Crabtree  
Tina and Harvey Crosby  
John Davin  
Suzanne Post Day '51  
Andrea E. Doane  
Catherine Donahue  
Zelinda and John Douhan  
The Duvall Family  
Marcia Dworkind and Charles Merzbacher  
Natalie Eldridge and Libba Ingram  
Kay Arden Elliott  
Bess Emanuel and John Vyhnanek  
Barbara Elliott Fargo  
Marcia McClintock Folsom  
Bobbi Fox  
Betty and Larry Fuchs  
Eileen and John Gallagher  
Shelly Greenfield and Allan Brandt  
The Hermanson Family  
Andrea C. Hoffman  
Lawrence A. Horlick  
Anne and Jim Howard  
Jeanne and Norton Juster  
Alexa and Ranch Kimball  
Sally Kindleberger  
Judy and John Knutson  
Danny LaChance  
Matthew T. Lazure  
Diane Levin and Gary Goldstein  
Blair MacInnes  
Ulla and Willem Malkus  
Allan and Anne Marie Martorana  
Brian Masters  
Mary and Mike McConnell  
Grace Napier and William Monnen  
Lisa Johnson Ogrinc

Charlotte and Ed Peed  
Mary ElizaBeth Peters  
Deb Poppel  
Ruthann Sneider  
Mr. and Mrs. George R. Sprague  
Martha E. Stone  
Joan I. Thorndike  
Louise and Edward Tsoi  
Judy Ulman,  
in memory of Ruthe Paige  
Barry, Wendy, and Sarah Wanger  
Karen Watson  
Jack Welch  
Martha and Jeff Winokur

We also appreciate thoughtful gifts from 9 donors in memory of Betty Taylor Rose.

*We are grateful to all our generous donors, including 69 contributors of amounts below \$100.*

This list reflects gifts and pledges made between 7/1/10 and 1/1/11.



Equity actor pictured: Neil Gustafson



(continued from page 9)

**Jane Staab (Composer)** is thrilled to have such wonderful talents singing her songs in *The Secret Garden*. She has composed music for over 30 productions, including, more recently, the song for WFT's *The Little Mermaid*, music for *Winnie-the-Pooh*, and scores for *A Little Princess*, *Alice's Adventures in Wonderland*, and *Let There Be Light*. Three of Jane's productions have been published and two have been performed at Lincoln Center: *Lily Daw and the Three Ladies* and *O Happy Day: The Story of the Birth of Christ*. Jane's collaborations with Susan Kosoff and Anthony Hancock have also produced *The Quest*, *End of the Circle*, *Emperor's New Clothes*, *Elves and the Shoemaker*, *The Welfare Family*, *Something Is Missing*, and more. Congratulations to Jennifer Glick on her new album *Musicals for Munchkins*, to Katherine Doherty on her latest Broadway adventure, and to Andrew Barbato for his musical *ALICE*. Their extraordinary gifts are a testament to the value of the arts in young people's lives. Jane is proud that WFT has helped to nurture them and delighted whenever they come home to our stage.

**Stacey Stephens (Costume Designer)** has worked on the Broadway productions of *Les Misérables*, *Miss Saigon*, and *Five Guys Named Moe* and toured extensively with *The Lion King*, *Wicked*,

and *Les Misérables*. He worked for over three years as Artistic Director of *Fiddlehead*, where he directed, designed, and created costumes for *Funny Girl* (2009 IRNE Award for Best Costume Design and nomination for Best Director), *The Odd Couple*, *Fiddler on the Roof* (2008 IRNE nomination for Best Director and Best Musical), *Crazy for You* (2008 IRNE Award for Best Costume Design and nomination for Best Musical and Director), *Into the Woods*, *Gypsy*, *The King and I*, *A Christmas Carol*, *Barefoot in the Park*, *Singin' in the Rain*, *My Fair Lady* (2007 IRNE Award for Best Costume Design), and *Steel Magnolias*, among others. Locally Stacey has designed costumes for SpeakEasy's *The Wild Party* (IRNE nomination), *Saturday Night*, *A New Brain*, and *Parade* (2007 IRNE Award for Best Costume Design); WFT's *The Little Mermaid*; Stoneham's *My Fair Lady* and *The Dinosaur Musical*; and Boston Conservatory's production of *Candide*. He has designed and staged performances for BGMC, including *Misbehavin'* with Nell Carter. Most recently Stacey directed and designed Reagle's critically acclaimed *Into the Woods* starring Rachel York. Upcoming, he will design and direct Boston Conservatory's production of Kurt Weill's *One Touch of Venus*. Stacey is a graduate of the American Musical and Dramatic Academy.

## Making Theatre Accessible to All

Wheelock Family Theatre is committed to ensuring that the theatre experience is available to all families regardless of their economic circumstances. To this end, we provide free or deeply discounted tickets through the following organizations:

ABCD East Boston Head Start	Colonel Daniel Marr Boys and Girls Club	Italian Home for Children
ABCD Geneva Avenue Head Start	Cotting School	Jewish Big Brother/Big Sister
ABCD - Manpower, Headstart, Family and Community Services	Crispus Attucks Children's Center	John Winthrop School
ABCD Mattapan Headstart	Dana Farber Cancer Institute	Judge Rotenberg Center
Acushnet Council on Aging	Department of Social Services	Jumpstart Programs - Wheelock College
Agassiz Neighborhood Council	Dimock Community Health Center	Lexington Montessori School
AIDS Action Committee	Dorchester Home-Schoolers	Massachusetts Hospital School
American School for the Deaf	Dorchester House Multi-Service Center	Mission Hill Community Center
Asian Task Force	Dorchester House Preschool/Day Care	Mission Safe
BASE - Braintree After School Enrichment	Dorchester YMCA After School	New England Village
Best Buddies	Early Learning Center/East	Noah's Ark Nursery School
Big Brother Big Sister Foundation of Boston	East Boston Early Education Center	OSHER Life Long Learning Institute at UMass
Big Brothers & Big Sisters Associates, Lawrence	East Boston High School	Partners for Youth with Disabilities
Boston Children's Chorus	East Boston Social Center	Plowshares
Boston Families for Autism	East End House	Rosie's Place
Boston Health Care for the Homeless	EDCO Program for the Deaf	Roxbury Presbyterian Church
Boston's Hope	Egleston YMCA	Roxbury Tenants of Harvard
Boys Club of Watertown	Floating Hospital Children's Center	SCAMPS Childcare Program
Bright Horizons	Freedom House	SCAMPS Gates Intermediate School
Brooks School	Germantown Neighborhood Center	Shattuck Childcare Center
Cambridgeport School	Girls Inc.	Soule Early Childhood Center
Canton High School	Hattie B. Cooper Community Center	South Boston Boys & Girls Club
Charlestown Boys & Girls Club	Haverhill Youth Center	Spaulding Child Care Center
Chelsea YMCA	Hawthorne Youth & Community Center.	TILL, Inc.
Children's Hospital	Hernandez School La Piñata	Trips R' Us
Codman Academy Charter School	Home for Little Wanderers	Upward Bound - Wheelock College
	Housing Families Inc.	Volunteers of America JP DSS
		YMCA West Roxbury



# WHEELLOCK FAMILY THEATRE

## EDUCATION PROGRAM



## CLASSES! CLASSES! CLASSES!

*for children, youth, and teens*

- **Vacation Week Institutes**  
(February, March, April)
- **Spring Semester**
- **Summer Program**

[www.WheelockFamilyTheatre.org](http://www.WheelockFamilyTheatre.org)



Acting  
Creative Dramatics  
Musical Theatre  
Auditioning  
Stage Combat  
Improvisation  
Scene Study  
Vocal Technique  
Theatre Dance

**617.879.2252/2235**

**BEST WISHES**  
to the  
**Wheelock Family Theatre**  
on the occasion of their  
**30th Anniversary Celebration**

In memory  
of our brother  
**Harold R. Hector, Jr.**

5 June 1940 – 31 July 2009



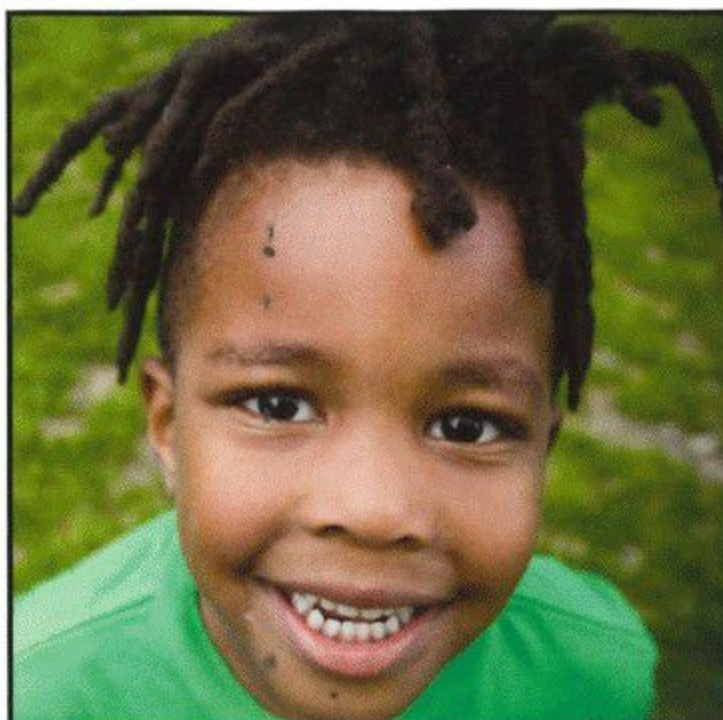
His Sisters:  
Elaine V. Barker  
Barbara S. Loatman  
Beverly M. Hector-Smith  
Carol A. Hector-Harris



Union Park Press is an independent publisher specializing in books about the arts, history, and culture of Boston and New England. Our goal is to bring these cultural riches to life with sophisticated writing and a fresh, contemporary point of view.

[www.unionparkpress.com](http://www.unionparkpress.com)





# The Park School

The Park School provides an exceptional education for boys and girls ages 4-15. At Park, students develop a passion for learning in a diverse environment that is both nurturing and challenging.

We offer after-school programs, generous financial aid, bus service to the Western suburbs, Beacon Hill and the Back Bay, and free shuttles from nearby MBTA stations.

To explore the school and learn about Park's curriculum and community, visit [www.parkschool.org](http://www.parkschool.org).

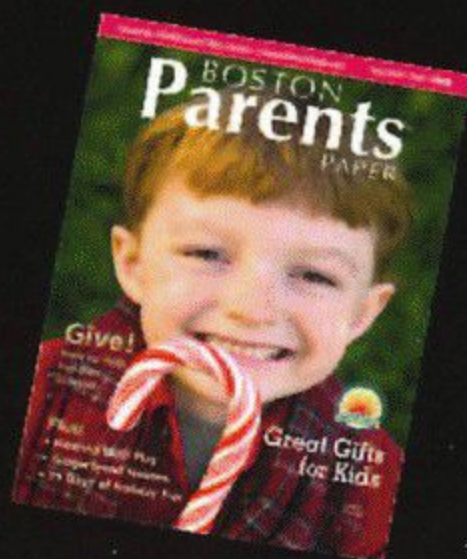
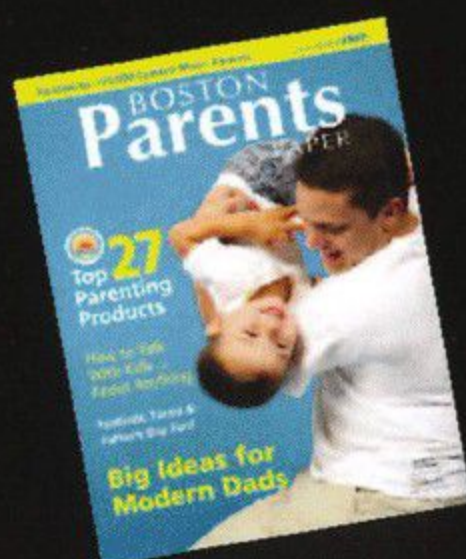
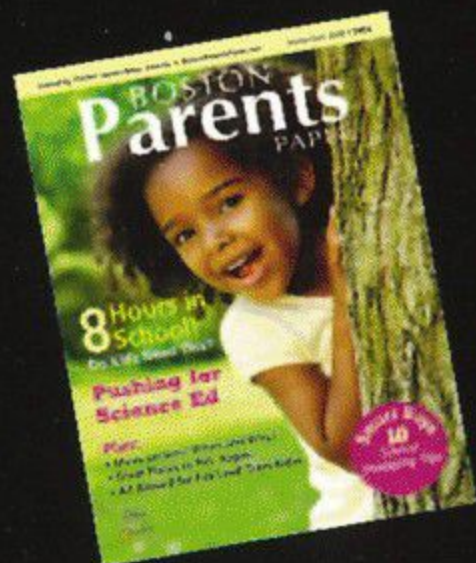
The Park School  
171 Goddard Avenue  
Brookline, MA 02445  
617-277-2456



## BOSTON Parents PAPER

Celebrating 26 years as Massachusetts' #1 Parenting Magazine!

[BostonParentsPaper.com](http://BostonParentsPaper.com)







**We're proud to support the voices of  
our community.**

When community members speak about supporting the arts, we respond to their call for making the possible actual. Valuing artistic diversity within our neighborhoods helps to unite communities, creating shared experiences and inspiring excellence.

Bank of America is proud to support Wheelock Family Theatre for its leadership in creating a successful forum for artistic expression.

Visit us at [bankofamerica.com](http://bankofamerica.com)

