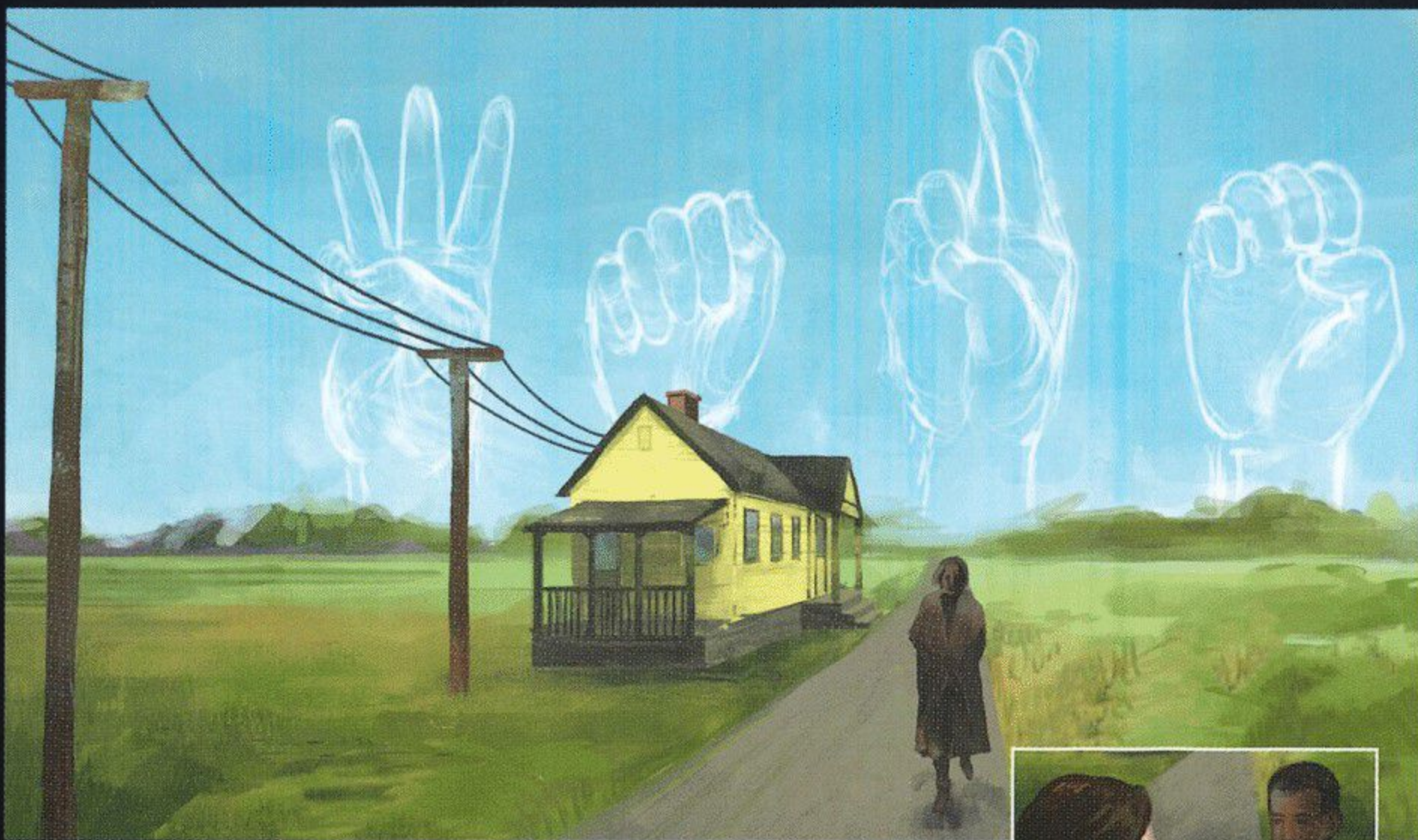




The Taste of Sunrise

Part Two of Suzan Zeder's Ware Trilogy



Art © Nellie Robinson, Accent Design

March 13-22, 2015

Friday nights at 7:30

Saturday & Sunday matinees at 3:00

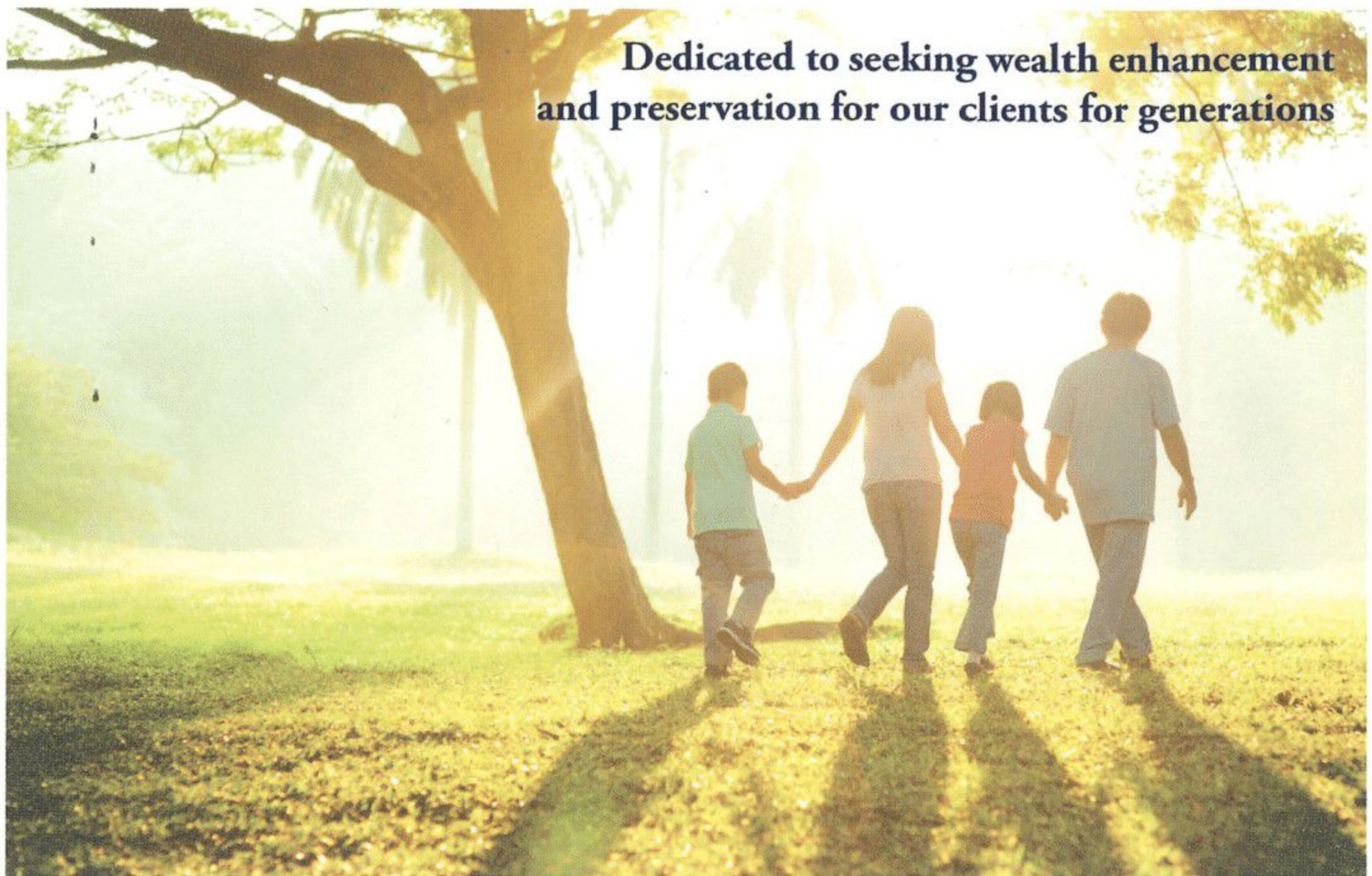


Each performance is in ASL and spoken English
Audio Description: March 19 & 22



The Yawkey Student Matinee Series

10:30 am school performances: March 18 & 19



**Dedicated to seeking wealth enhancement
and preservation for our clients for generations**

Eaton Vance Investment Counsel is a proud sponsor of the Wheelock Family Theatre



To have a discussion about working with us, please contact
David McCabe, President | 617.672.6188

Two International Place, Boston, MA 02110 | eatonvancecounsel.com

Investing entails risks and there can be no assurance that EVIC will achieve profits or avoid incurring losses.
Past performance does not predict future results.

March 2015

WFT is proud to be part of the world premiere of the Ware Trilogy—produced for the first time in one city in collaboration with Emerson Stage and Central Square Theater. Presenting *The Taste of Sunrise* builds upon our rich tradition of staging high-quality theatre that is accessible and inclusive. The Trilogy's celebrated author Suzan Zeder has transformed our perceptions of what is possible in producing works for audiences of all ages. Her plays challenge us artistically, emotionally, and intellectually. And her unwavering commitment to excellence has inspired generations of playwrights.

The Taste of Sunrise is a bilingual play—performed in American Sign Language and spoken English—that centers on the character of Tuc, who loses his hearing in the 1917 scarlet fever epidemic. Delving deeply into the play's themes of communication, loss, and self-discovery has been a transformative experience for us all. It has been humbling and exhilarating working with a dedicated ensemble of actors and theatre artists (both Deaf and hearing) to bring this exquisite story to life.

We hope you will return for the final show this season—the Broadway smash *Shrek the Musical*, based on the picture book by William Steig and the award-winning film by DreamWorks. This cheeky musical examines our culture's perceptions of beauty and celebrates its colorful cast of unforgettable characters, warts and all.

Join the extended family of WFT as a patron, volunteer, or donor. Become part of our journey, as we present stories—new and old. Experience the power of live theatre that challenges us to view the world in fresh and dynamic ways.

Wendy Lement and Shelley Bolman
Co-Artistic Directors



Mail: 200 The Riverway, Boston, MA 02215-4176

Tickets and Subscriptions
Classes
Casting
Donations
Volunteer Opportunities
Theatre Espresso

617.879.2300
617.879.2252
617.879.2235
617.879.2252
617.879.2147
617.879.2148

tickets@wheelock.edu
jbay@wheelock.edu
sbolman@wheelock.edu
kelliott@wheelock.edu
cbaldwin@wheelock.edu
kadams@wheelock.edu

Web: www.wheelockfamilytheatre.org

The arts are for everyone

When community members support the arts, they help inspire and enrich everyone. Artistic diversity helps unite communities, creating shared experiences and inspiring excellence.

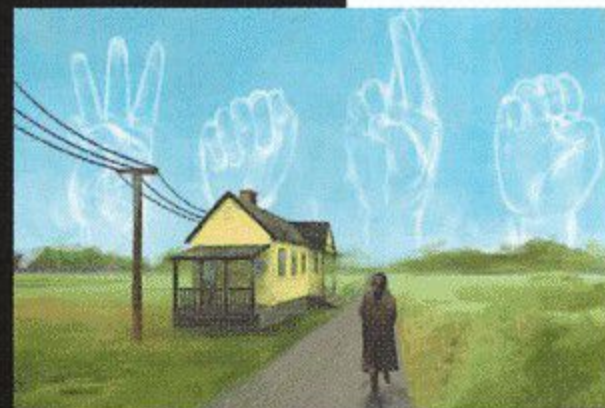
- Bank of America is honored to be connected to Wheelock Family Theatre and its dedication to bringing the arts to our community.

Visit us at bankofamerica.com/massachusetts

Life's better when we're connected®

©2014 Bank of America Corporation | ARLJT8GF

Bank of America 



The Edge of Peace

April 3-11, 2015

Central Square Theater

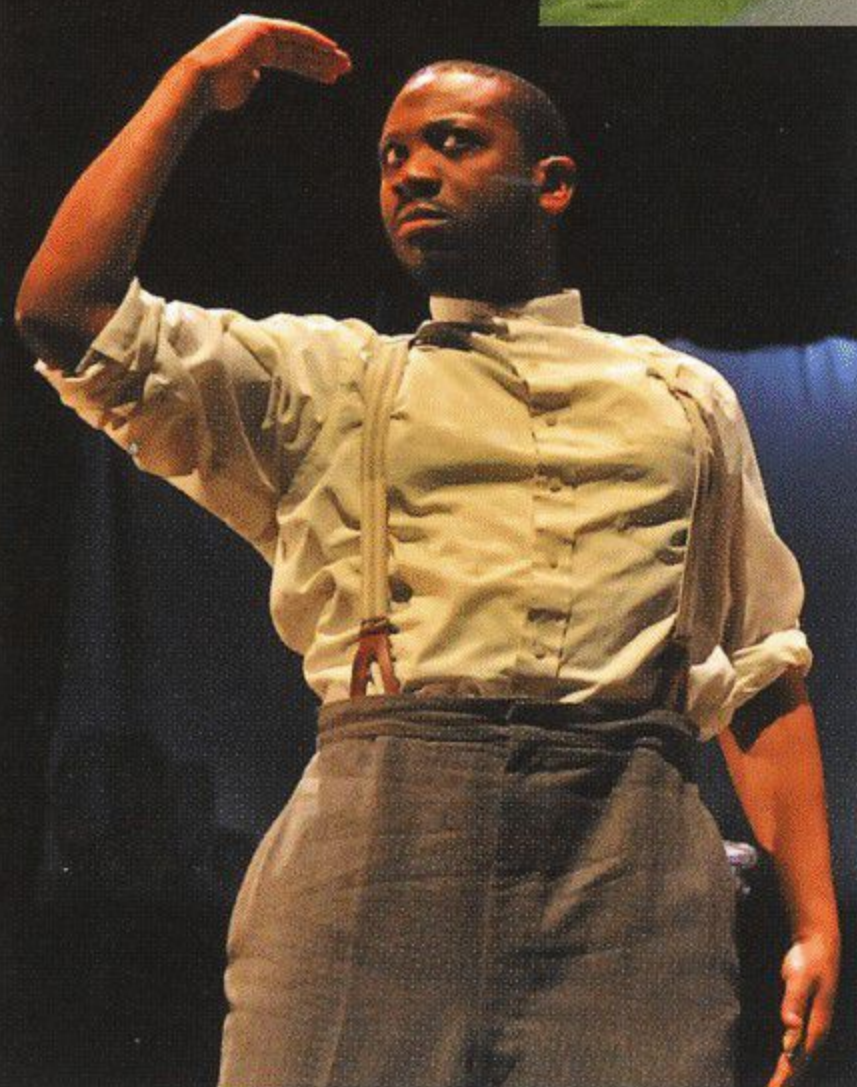
www.centernalsquaretheater.org

617.576.9278

The Edge of Peace is the final play in the Ware Trilogy produced in collaboration with Emerson Stage and Wheelock Family Theatre.

This play is in both spoken English and American Sign Language.

with Elbert Joseph (EJ) as Tuc



Craig Bailey/Perspective Photo

For more information, check out our Actors' Spotlight
www.WheelockFamilyTheatre.org/our-actors



Sirena Abalian (*Alma / Soda Fountain Patron / Voice of Maizie*) is honored to be performing in her 10th show at WFT! She has appeared in numerous shows in the Boston area, including the title role in *Pinocchio* and Jojo in *Seussical* (WFT); Esther Smith in *Meet Me in St. Louis* and Clara in *Nutcracker the Musical* (Stoneham); Sara Crewe in *A Little Princess* (Fiddlehead); and Fredrika in *A Little Night Music* (Arlington Friends). Sirena has received two IRNE Awards and four nominations for Best Performance by a Young Actor. She plans to major in ASL-English Interpretation next year in college. Thanks to WFT—her second home—for the endless support!

Patricia Manalo Bochnak (*Choreographer*) holds a BA from Boston College and an MA in Dance Education from Columbia. She has worked with Alvin Ailey American Dance Theater, Paul Taylor Dance Company, and American Ballet Theater to develop education outreach programs. Patricia has taught dance in Boston and NYC. Favorite choreography credits include *Pippin*, *Cabaret*, *Seussical*, *Candide*, and *Shrek*. Patricia currently teaches at Let's Dance, Inc., and is founder and executive/artistic director of North Shore Children's Theatre.

Daniel Bolton (*Dr. Grindly Mann*) is excited to be a part of this piece and this phenomenal company. Past WFT credits include *It's a Wonderful Life*, *Our Town*, *Annie*, *Little Women*, *Lilly's Purple Plastic Purse*, and *The Beanstalk, the Giant, and Jack*, among others. Danny is also a company member of Theatre Espresso and a teaching artist for WFT.

Amanda Collins (*Maizie*) has appeared regionally in *A Behanding in Spokane*, *The Bald Soprano*, *Speech and Debate*, *Colorado*, and *What Then* (WHAT); *This Is Our Youth* (Gloucester Stage); *When The World Was Green* and *An Ideal Husband* (American Stage, FL); *The Seagull* (Harbor Stage); *9 Circles* (Publick, Boston); *The Island of Slaves* (Orfeo); *No Exit* (Payomet); Brecht's *The Life of Galileo* (Underground Railway); and *Jester's Dead* (The Outfit, NY). Her television credits include *Olive Kitteridge* (HBO) and *Boston's Finest* (ABC Pilot). Amanda can also be seen in the film, *Sea of Trees*.

Steven Cosnek (*Soda Foundation Patron / Voice of Roscoe / Hunter*) is a native of Pittsburgh, PA. He is thrilled to be returning to the WFT stage for his third show, having last been seen here in *The Hobbit*. Steven earned his MFA in Musical Theatre from the Boston Conservatory and holds a BFA in Vocal Performance from the Indiana University of PA. He has performed with Arts After Hours in *Much Ado About Nothing* and Commonwealth Shakespeare's *Coriolanus* on the Boston Common. Steven sings regularly around Boston with various church and professional choirs. Thanks to his family and friends for their unending love and support!

Cori Couture (*Audio Describer*) has described content for WGBH's Descriptive Video Service, WFT, Huntington, and Open Door. She teaches for WFT and creates "Social Stories"

to help patrons on the autism spectrum prepare for coming to the theatre. Also, as the Theatre's Education Support Specialist, she provides individualized attention to WFT students, especially those on the autism spectrum.

Erisette Cruz (*Deaf Student Ensemble*) recently participated in a WFT theatre workshop led by Kristin Johnson and Elbert Joseph and is pleased to be making her WFT debut. She attends Horace Mann School for the Deaf and Hard of Hearing, where her favorite classes are math and graphic design. Erisette likes dance, fashion design, music, reading, and drawing.

Kippy Goldfarb (*Understudy / all adult women*) is delighted to be working with WFT again, especially on this project. Prior WFT credits include *Anne of Green Gables*, *To Kill a Mockingbird* (Miss Maudie), and *Our Town* (Mrs. Gibbs). Other recent credits include Mary in *Reconsidering Hannah* (Boston Playwrights'); *Legally Dead* by Dan Hunter; Peter Floyd's *Absence*; Loretta in *Reflections of a Rock Lobster* (BCT), and Emily in *Before I Leave You* (Huntington). Kippy has performed a wide range of characters—including Vivian Bearing (WIT), Linda Loman (*Death of a Salesman*), and Sharon (*Book of Days*)—with many local theatres, including WHAT, Foothills, Lyric Stage, Vineyard Playhouse, and Nora. Kippy is also a photographer, who has worked for many NE theatres. She exhibits her art photographs nationally and often photographs productions for WFT.

Reignyah Miraculous Grant (*Deaf Student Ensemble*) is a 6th grader at Boston Green Academy. She is a competitive swimmer with a mean butterfly stroke and delights in all things athletic. She also enjoys dancing and drawing. Though Reignyah has been involved in several small plays, this is her first chance to work at a professional theatre. She is tremendously excited for the opportunity and happy that WFT is where she'll make her "big stage" acting debut!

Emily Hart (*Stage Manager*) has worked in stage management in the Boston area on shows with Company One, Theatre on Fire, and Zeitgeist Stage. Outside of Boston, she has managed the stages of the Burlington Players, the Wellesley Players, and the Concord Players. She is a three-time nominee for EACT's Best Stage Manager Award. Emily learned ASL at Northeastern and taught at DEAF Inc. in Allston for several years.

Ethan Hermanson (*Voice of Tuc*) is a 10th grader at Cambridge Rindge & Latin. He is delighted to return to WFT, where he has been a Story Trouper for three years, acted in the Advanced Teen Intensive, and performed in several Summer Intensive productions, including *A Year With Frog and Toad* (Toad); *Once on This Island* (Daniel); *Dear Edwina* (Bobby); and *Flat Stanley* (Stanley). Other credits here include one of Fagin's boys in *Oliver!* and the ensemble in *Aladdin*. Favorite performances include *To Kill a Mockingbird* (Jem), *The Diary of Anne Frank* (Peter van Daan), and *A Soldier's Play* (Lt. Byrd) at Roxbury Rep (IRNE Award for Best Ensemble).

Janie E. Howland (Set Designer / Advisor for the Ware Trilogy) is pleased to return to WFT. Recent work includes the Consenses Art Festival; *Velveteen Rabbit* (BCT); *Sweeney Todd* (Lyric Stage); *Little Murders* (Boston Conservatory); and *Antigoné* (Northeastern). Venues include New Rep, SpeakEasy, Weston Playhouse, NSMT, Central Square Theater, ART Institute, Company One, Stoneham, Merrimack Rep, and NJ Shakespeare Festival. Janie teaches at Emerson College and Wellesley College. She is the recipient of Elliot Norton Awards in 2009, 2006, and 1997, and of IRNE Awards in 2014, 2007, and 2006. Co-founder of CYCO SCENIC, Janie holds an MFA from Brandeis. USA Local 829. www.janiehowland.com

Kristin Johnson (Co-Director) hails from the Berkshires, where she spent her childhood accompanying her parents to many cultural events. At the time, these were not communication-accessible for Deaf individuals such as herself, and she passed the time by imagining what the characters of the plays might be saying to one another. Today, she helps make cultural events accessible for Deaf children by using American Sign Language to create an accessible artistic experience. Love and thanks to Ingrid, family, Wendy, and ALL.

Elbert Joseph (Tuc), last seen here in *Alice* (Caterpillar) and *Mountain...Moon* (Great Green Tiger), is glad to be home again on the WFT stage for his 20th production. Other local credits include ART's *Uncle Vanya*, *Three Sisters*, and *The Lily's Revenge* and Central Square's *Arabian Nights*. EJ is excited to be continuing his adventure as Tuc in the Ware Trilogy and delighted to be part of this wonderful production. Working with co-directors Wendy Lement and Kristin Johnson, as well as the amazing and colorful cast and crew, has been an experience he will never forget. Love and thanks to everyone who supports and believes in him—and grand thanks to Megan and the cast and crew of *Mother Hicks* for the wonderful journey.

Wendy Lement (Co-Director) is WFT's producer and co-artistic director. Her directing credits here include *Pippi Longstocking* and *It's a Wonderful Life*. She is also artistic director of Theatre Espresso, which tours with original plays that explore issues of social justice. Prior to WFT, Wendy was a longtime professor at Regis College, where she directed over 35 plays including *Mother Hicks*, *Dancing at Lughnasa*, *The Importance of Being Earnest*, *The Good Woman of Setzuan*, *Goodnight Desdemona (Good Morning Juliet)*, and *Steel Magnolias* (Moss Hart Award). Her production of *The House of Bernarda Alba* won the Kennedy Center's NE Region's American College Theatre Festival in 2000. Wendy has directed several of her own plays for local theatres, including *Woman with the Red Kerchief* (published in *Plays of the New England Russian Theatre Festival*), *Salem's Daughters*, *Remember Last Night*, *King George III vs. Ruth Blay*, *Dolphins: The Myth of Persephone*, *Legend of the Christmas Rose*, and *Keri Tarr: Cat Detective*, based on her 2004 children's book of the same name. Wendy co-authored *And Justice for Some: Exploring American Justice through Drama and Theatre* (Heinemann 2005), and wrote "Theatre-in-Education as a Catalyst for Civic Dialogue" for *Learning Through Theatre* (Routledge 2013). Her article "Susanna Rowson (1762-1824): Dramatist, Actress and Educator" was published in *AATE's Youth Theatre Journal* (2001), and she received the 2000 AATE Distinguished Dissertation Award. Wendy holds a Ph.D. in Educational Theatre from NYU.

Jen Alison Lewis (Izzy Sue Ricks / Audiologist / Nurse) is delighted to be making her WFT debut, after performing for three years with Theatre Espresso. An actor, director, coach, playwright, and mom, Jen is a founding member of It's A Fiasco, performing free Shakespeare in Cambridge parks. Favorite credits include *Hermia* in *A Midsummer Night's Dream* and *Dogberry* in *Much Ado* (It's a Fiasco); *Legally Dead* (BPT); *Kate* in *Taming of the Shrew*; *Living Out* (Lyric Stage); and *The Friends of Eddie Coyle* (Stickball).

Marjorie Lusignan (Props Designer) is glad to return for a seventh season at WFT. After a 25-year career as a technical illustrator, she is now a visual artist who lives, gardens, and makes art in the woods of RI.

Roger J. Moore (Sound Designer), employed with CBS Radio – Boston for over 25 years, is currently the assistant production director and commercial voice of 98-5 The Sports Hub. He also enjoys a variety of freelance video production projects. Since 2004 Roger has worked as sound designer and stage manager for *The Gold Dust Orphans*. He has been part of the WFT family since 2008.

E. Sho Ndukwe (Ensemble) comes to performance interpreting by way of a life-long love for the beauty and complexity of American Sign Language, as well as many years of activism within the Deaf community. Over the past three years, Sho has worked with BU Theatre, Central Square, Boston Landmarks Orchestra, and Broadway in Boston at the Boston Opera House. She is absolutely delighted to work for a third time with WFT.

Michael Notardonato (Understudy / male ensemble roles) was last seen here as Link Larkin in *Hairspray*. A Naperville, IL native, he is a senior at Boston Conservatory where he is pursuing a BFA in Musical Theatre. Regional credits include ME State Music Theatre, The Marriott Lincolnshire, and Drury Lane Oakbrook. Thanks to Shelley and Wendy for this opportunity and to his teachers, friends, and family for all of their love and support! www.michaelnotardonato.com

Ingrid Jensen O'Dell (Deaf Student Ensemble) is an aspiring singer, writer, and actress. She is in her last year at Harborlight-Stoneridge Montessori School in Beverly. Ingrid is a CODA (Child of Deaf Adults) and very proud to be part of such a unique cast. Love and thanks to Mumum, Wendy, family, friends, and teachers for their constant support!

Cliff Odle (Jonas Tucker) is honored to be appearing in his 5th WFT show. Previous credits here are *Pippi*, *Oliver!*, *Saint Joan*, and *A Tale of Two Cities*. Recently, he was seen in *The Color Purple* (SpeakEasy); *RACE* (New Rep); and *Vacancy* (Elemental). Other credits include *Passing Strange* (New Rep); *A Child's Christmas in Wales* (Gamm); *The Good Negro* (Company One); *A Blessing and a Curse* (Spiced Wine); and *Brendan and King Hedley II* (Huntington). Cliff is also a playwright and a director. Some of his works performed include *Our Girl in Trenton* (BU); *Running the Bulls* (New Urban Theatre Lab); and *The Delicate Art of Customer Service* (Boston Theater Marathon). His directing credits include *The Cook*, *Amadeus*, *Agnes of God*, *The Colored Museum*, and *Suburbia*. Cliff was also a director, as well as managing director, for the *Emancipated Century: August Wilson readings*. He holds an MFA from BU in Playwriting and is an adjunct professor of Theatre at UMass Boston. He is a co-founder of the New Urban Theatre Laboratory (NUTLab) and a founder of the Annual Jersey Voices Festival. Cliff hopes that his work will serve as an inspiration to his children, GEM and C.C.

Kathleen Patrick (Emma Flynn) is thrilled to be part of this wonderful project at WFT. Some of her acting credits include close to 100 performances of *Living in Exile: a retelling of the Iliad* by Jon Lipsky. She co-adapted (from a John Barth novella) and performed in *Scheherazade's Sister* at the Hasty Pudding Theater in Cambridge, and wrote and performed the one-woman play *The Complete Guide to Idol Cooking or Jane Goodall Won't Eat My Salmon*, which she performed in several NE theatres. Other credits include *Thank You Kind Spirit* and *I Can't Imagine Tomorrow* (Provincetown Tennessee Williams Festival); *Blanche* in Robbie McCauley's production of *A Streetcar Named Desire*; *Dora Strang* in *Equus* (Nóra); all the female roles in *Wenceslaus Square* (Gloucester Stage); and *Lady From Havana* (Vineyard Playhouse). Kathleen is a full-time member of the Acting faculty at Emerson College, where she divides her time between classroom teaching and the never-ending call of committees.

Christopher S. Robinson (Ensemble), an ASL Interpreter for the performing arts since 1994, is the disability services coordinator of outreach and training at BU. Much of his work as an interpreter has been influenced by his conversations with the late August Wilson. Christopher has worked as an interpreter on Wilson's *Fences*, *King Hedley II*, *Radio Golf*, *Jitney*, and *Gem of the Ocean*. He also interpreted *A Raisin in the Sun*, directed by Kenny Leon and starring the late Esther Rolle. ASL-interpreted musical productions have included *A Year with Frog and Toad*, *Seussical*, *The Lion King*, *Miss Saigon*, *Avenue Q*, and, most recently, *The Gershwins' Porgy and Bess* at ART. Stage and TV credits include *The Meeting* (Palace, Manchester, NH) and the featured role of David Walker in the PBS series *Slavery and the Making of America*. Christopher is also a certified facilitator in the LEGO® Serious Play™ methodology. Member, Board of Directors, StageSource www.stagesource.com. Je t'Aimee, Justice, and Lyric.

Brittany Rolfs (Nell Hicks) is thrilled to be back at WFT, where she was last seen as Nancy in *Oliver!* and Annie Sullivan in *The Miracle Worker*. Other favorite roles include Betty Jean in *The Marvelous Wonderettes*, Mother/Queen of Hearts in *ALICE*, Stepmother in *Cinderella*, and Georgie in *The Full Monty*. Next up: the Dragon/Fairy Godmother in *Shrek the Musical!* Brittany loves warm weather, ukuleles, watercolor paints, her friends, and family. More at brittanyrolfs.webs.com.

Matthew J. Schwartz (Roscoe), born in the Bronx, is honored to be making his debut with this fabulous cast of hearing and Deaf talent. While attending the National Technical Institute for the Deaf, he discovered a newfound passion as a member of the ASL Poetry Society. After graduating with a Master's in Deaf Education he moved to Boston, and is currently a theatre advisor, American Sign Language teacher, and teacher of the Deaf at the Boston Arts Academy. He owes this next step in his career to his theatre advisees. Thanks to "Swaggy Advisory 29."

Lisa Simpson (Costume Designer) has been WFT's costumer since 2006. She has designed costumes for many productions here, including *Alice*, *Hairspray*, *Anne of Green Gables*, *The Phantom Tollbooth*, and *A Tale of Two Cities*. Her first foray into sewing and creating costumes was at age six, when she removed and cut up her new bedroom curtains, much to her mother's dismay.

Donna Sorbello (Dr. Alexis Graham) is delighted to be back at WFT, since playing Marmee in *Little Women* several seasons ago. NE credits include roles with Huntington, Commonwealth Shakespeare, *Shear Madness*, Lyric Stage, New Rep, NSMT, Nora, and Reagle. She has just appeared as Serafina in the staged readings of *Rose Tattoo* at TAW (CT). Favorite roles include Ana in *Clean House* (New Century); The Woman in *Unexpected Man* (Gloucester Stage); Amanda in *Glass Menagerie* (Palace and Harborfest); and Lady (*Orpheus Descending*, IRNE Award). Donna was recently seen on TV in *The Makeover* as salon owner Eysse; other film and TV roles include *Invention of Lying*, *The Brotherhood*, *Tax Day*, *See Kate Run*, *Mulberry Tree*, and *Haichiko*. She is a playwright whose work was seen recently in the Boston Theater Marathon and whose plays have also been produced by Priscilla Beach and Equity Library Theatre at Lincoln Center. Donna is an instructor of acting and playwrighting.

Peter Stewart (Composer) is thrilled to be collaborating again with WFT, after making his musical debut here with *Pippi Longstocking*. He has written music for over 20 shows for Wendy Lement, including *Red Shoes*, *A Midsummer Night's Dream*, *Salem's Daughters*, *Antigone*, *Jane Eyre*, and *House of Bernarda Alba*. Peter wrote the musical score for *The Good Woman of Manhattan* (Reddragonfly Films). Currently, he tours with his World Peace Cantata, is the director of the Cantata Singers, and leads the Potato Chip Band. Peter lives in Hamilton, with his wife, two children, and two cats.

Suleyka Suarez (Deaf Student Ensemble), born in Bani, Dominican Republic, moved to Boston at the age of 13. It wasn't until a few months after she entered middle school that her teachers noticed her difficulty with hearing—and she received her first pair of hearing aids. Today Suleyka is a proud Theatre major at Boston Arts Academy, and very happy and thankful to be here. She is grateful to everyone at WFT for the chance to be in *The Taste of Sunrise*. The arts are her life, her everything. This will be an unforgettable show!

Lewis D. Wheeler (Clovis P. Eudy / Audiologist / Hunter) has appeared regionally in *No Man's Land*/IRNE nomination, Best Supporting Actor (ART) and *Long Day's Journey Into Night* (New Rep), as well as in productions with Huntington, Commonwealth Shakespeare, Lyric Stage, Boston Playwrights', Nora, Publick, Harbor Stage, WHAT, American Stage (FL), Gloucester Stage, Underground Railway, Wellesley Summer, Stoneham, Vineyard Playhouse, Shakespeare Now, and TCAN Natick. His film and television work includes *The Company Men*, *Louisa May Alcott* (PBS), *Brotherhood*, and *Black Mass*, the upcoming film about Whitey Bulger. Lewis earned his BA in Theatre and Film Studies at Cornell and his MFA from the American Film Institute. Member of Actors' Equity since 2004.

Arthur Wheelock-Wood (Deaf Student Ensemble), a 7th grade student at Boston Trinity Academy in Hyde Park, enjoys singing and drawing, making puppets and marionettes, creating stages and costumes for them, and putting on shows. Credits include Da-Fu in *Mountain...Moon*, an orphan in *Oliver!*, and a munchkin and Oz citizen in *The Wizard of Oz* (WFT); the ice cream seller in *Brundibar* (Central Square); and Yertle the Turtle in *Seussical* (South Shore School of Theatre). Arthur enjoys taking classes at WFT, BCT, and Puppet Showplace.

Annie Wiegand (Lighting Designer) is a freelance lighting designer who happens to be Deaf. Boston credits include *Phedre* and *Othello* (Actors' Shakespeare); *The Forgetting Curve* (Bridge Rep); *Tribes* (SpeakEasy); and *You For Me For You* and *Love Person* (Company One). Her work in NYC includes *Square Peg, Round Hole* (Tectonic, associate); *Miss NoWhere Diner* (Akadēmeia, Planet Connections Theatre Festivity Best Lighting Design nominee); *The Medicine Showdown* (Flying Carpet); and *A Hard Wall at High Speed* (Astoria Performing Arts Center, associate). Other credits include *Visible Language* (Gallaudet/Avant Bard) and *Penelope of Ithaca* (Hangar). An adjunct professor in the Theatre Arts Department at Gallaudet University and producing director of New York Deaf Theatre, Annie was lighting director for the Acting Company tours from 2010-2013. www.anniewiegand.com

Suzan Zeder (Playwright) is one of the leading playwrights for young and family audiences in the United States. Her plays have been produced by professional, university, and community theatres in all 50 states and internationally. The three plays of the Ware Trilogy are widely considered to be her "signature" plays. They have been produced by leading professional theatres and universities throughout the country and have garnered numerous Distinguished and Best Play awards. She is also the co-author of *Spaces of Creation: The Creative Process of Playwriting*, an innovative body/mind approach to creative writing. Suzan is a four-time winner of the American Alliance of Theatre and Education's Distinguished Play Award and Campton Bell Lifetime Achievement Award. She is a member of the College of Fellows of the American Theatre and the Academy of Distinguished Teachers at the University of Texas at Austin. Suzan is the former Head of Playwriting at UT Austin, where she held the Endowed Chair in Theatre for Youth/Playwriting. She lives in Santa Fe, New Mexico.

The Taste of Sunrise

by Suzan Zeder

DIRECTORS

Kristin Johnson, Wendy Lement

SET DESIGNER
Janie E. Howland

CHOREOGRAPHER
Patricia Manalo Bochnak

LIGHTING DESIGNER
Annie Wiegand

COMPOSER
Peter Stewart

COSTUME DESIGNER
Lisa Simpson

PROPS DESIGNER
Marjorie Lusignan

SOUND DESIGNER
Roger J. Moore

AUDIO DESCRIBER
Cori Couture

PRODUCTION STAGE MANAGER
Emily Hart*

THE CAST

Tuc	Elbert Joseph
Jonas Tucker	Cliff Odle*
Emma Flynn	Kathleen Patrick*
Nell Hicks	Brittany Rolfs*
Dr. Alexis Graham	Donna Sorbello*
Dr. Grindly Mann	Daniel Bolton*
Clovis P. Eudy / Audiologist / Hunter	Lewis D. Wheeler*
Izzy Sue Ricks / Audiologist / Nurse	Jen Alison Lewis*
Roscoe	Matthew J. Schwartz
Maizie	Amanda Collins*
Voice of Tuc	Ethan Hermanson
Alma / Soda Fountain Patron/ Voice of Maizie	Sirena Abalian
Soda Fountain Patron / Voice of Roscoe / Hunter	Steven Cosnek
Deaf Student Ensemble	Erisette Cruz, Reignyah Miraculous Grant, Ingrid Jensen O'Dell, Suleyka Suarez, Arthur Wheelock-Wood
Ensemble	E. Sho Ndukwe, Christopher S. Robinson

UNDERSTUDIES

Kippy Goldfarb*, Michael Notardonato

Setting: Tuc's Farm, Township of Ware, Central Institute for the Deaf, Dug Hill, Illinois State Home
Time: 1917 - 1928

Produced by special arrangement with THE DRAMATIC PUBLISHING COMPANY of Woodstock, Illinois.

There will be one 15-minute intermission between the acts.

Ask the House Manager for individual sound enhancement devices.

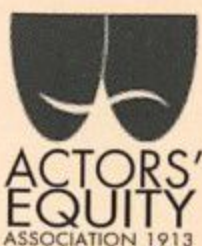
The taking of photographs and use of recording devices is strictly forbidden.

Please turn off all electronic devices. Please, no eating or drinking in the theatre.

Open captioning provided in collaboration with c2 (caption coalition) inc, www.c2net.org.



This program is supported in part by a grant from the Boston Cultural Council, a local agency which is funded by the Massachusetts Cultural Council and administered by the Mayor's Office of Arts and Culture.



*Member of Actors' Equity Association, the Union of Professional Actors and Stage Managers in the United States. The Wheelock Family Theatre is operating under the terms of a Developing Theatre's Program of Actors' Equity Association. The contract used is a Letter of Agreement.



Wheelock Family Theatre**STAFF**

Producer/Co-Artistic Director	Wendy Lement
General Manager/Co-Artistic Director	Shelley Bolman
Director of Education	John Bay
Assoc. Director of Education/Managing Director, Theatre Espresso	Kortney Adams
Publicity and Marketing Director	Charles G. Baldwin
Administrative Director	Kay Arden Elliott
Grantswriter	Diane Oktay
Audience Engagement Coordinator	Marianne Adams
Inclusion Coordinator/Director of Artistic Sign Language	Kristin Johnson
Supervisor of Patron and Student Services	Jamie Aznive
Technical Director	Matthew T. Lazure
Associate Technical Director/Sound Op	James Williston
Assistant Technical Director/Master Electrician	Craig A. Zemsky
Crafts Director/Props Mistress	Marjorie Lusignan

PRODUCTION TEAM

Dramaturg/Co-Assistant Director	Patrick McCarthy
Co-Assistant Director	Sophie Rich
Assistant Stage Manager	Diana Zito
Dialect Coach	Christine Hamel
ASL Team	Letitia Nadine Bynoe, Adrianna Kathryn Neefus, Desiree Weems Sheppard
Dramaturg Consultant	Katherine Krzys
Production Assistant	Kara Kelley Martin
Costumer	Lisa Simpson
Assistant to the Costumer	Jennie Hudson-Bryant
Open Captioning Consultant	Jonathan O'Dell
Captioning	Jamie Aznive, coordinator Sheelagh Cook, Darius Morant, Kaitlyn Talbot
Scenic Carpenters	Jeff Gardiner, Doughty Leigh, Elliot Purcel, Jerry Wheelock, Mac Young
Electrical	Andrew Andrews, Matthew Breton, Matt Cost, Melanie Popp, Lauren Scattolini

EDUCATION PROGRAM FACULTY

Marianne Adams, Katherine Akerley, Esme Allen, Christy Betit, Brynnalee Blackmar, Danny Bolton, Jennifer Buller, Cori Couture, Laura DeGiacomo, Andrea Doane, Kelly Dooley, Donna Folan, Ellie Friedland, Jeri Hammond, Kristin Johnson, Shannon Lee Jones, Elbert Joseph, Steven Lipsitt, Marjorie Lusignan, Dev Luthra, Angie Jepson Marks, Brett Marks, Robin McNamara, Roxanna Myhrum, Grace Napier, John O'Neil, Jacqui Parker, Beth Peters, Stephen Reinstein, Sophie Rich, Samantha Richert, Ilyse Robbins, M. Lynda Robinson, Rebecca Schneebaum, Jackie Theoharis, Rita Thompson, Kaitee Tredway, Fran Weinberg, Alan White

CREWS, WORK/STUDY STUDENTS, AND INTERNS

Sallie Banta, Daniel Begin, Khilah Boone, Melissa Bratti, Alexis Byrne, Kaleigh Carrington, Rachel Copans, Rachel Costello, Fantasia Fernandes, Courtney Fillebrown, Amani George-Luis, Kendra Grant, Nathaniel Guevin, Alicia Hebert, Cassandra Highbridge, Solana Johnson, Simone Khenkin, Carina Lawrence, Rachel LeBlanc, Carishmar Moore, Lauren Ofshay, Sol Marie Padin, Leslie Perlera, Davis (DJ) Piper, Jenn Provoost, Kiran Raza, Donovan Riley Robinson, Marcus Sardella, Nic Seyffert, Jetta Smith, Patrick Snyder, Marquis Solis, Lennie Tripolitis, Doris Vincent, Emily Woznick

SPECIAL THANKS

Central Square Theater; Shawn P. Cotter; Emerson Stage; Kippy Goldfarb; Sanjeev Joshi; Andrew Katz; Patrick McCarthy and Paul Rivenberg for the study guide; Gary Ng; Mary ElizaBeth Peters and The Accessible Theatre; Nellie Robinson for poster design; Frank Romero and members of the Wheelock College Facilities staff; Nancy Viall Shoemaker; Redmund Shoemaker; Jody Steiner; William B. Swett Museum at Beverly School for the Deaf; Jerry Wheelock; Kathy Wittman; Ezra and Jodi Leduc Zemsky

We wish to thank all the people who have joined with us since the program went to press.

Wheelock Family Theatre Advisory Board

WFT's Advisory Board is a group of dedicated individuals from broad and diverse segments of the community who provide support and expertise to WFT's staff and artists on an ongoing basis. We are grateful for their insights and their enthusiasm.

Carola Cadley, Co-Chair, VP, Corporate Development and Marketing, Children's Hospital Trust, Boston

Carole Charnow, Vice Chair, President and Chief Executive Officer, Boston Children's Museum

Eleanor Chin, Principal, Clarity Partners Coaching and Consulting, Jamaica Plain

Linda Chin, President, Asian Task Force Against Domestic Violence, Boston

Jeff Coburn, Co-Chair Emeritus, Managing Director, Coburn Consulting, Boston

Ceronne B. Daly, Director of Diversity Programs, Office of Human Resources, Boston Public Schools

Mindy d'Arbeloff, Co-Chair, Deputy Chief of Staff, Executive Office of Governor Charles Baker, Commonwealth of Massachusetts

Lauren Doherty, Parent Volunteer, Dover

Rosario A. Dominguez, Senior Training and Technical Assistance Associate, Head Start National Center on Program Management and Fiscal Operations, Education Development Center, Inc., Waltham

Priscilla Fales, Teacher, Beacon Hill Nursery School, Boston

Andrea (Andi) Genser, Executive Director, WE CAN Corporation, Harwich Port

Nancy Gertner, Professor of Practice, Harvard Law School, Cambridge

Lillian Gonzalez, Principal, Gonzalez & Associates P.C., Stoughton

Charles (Chuck) B. Gordon, Chief Advancement Officer, uAspire, Boston

Eric Hermanson, Attorney, White & Williams LLP, Boston

Steven M. Key, Esq., Attorney, Law Office of Steven M. Key, Boston

Susan Kosoff, Co-Founder, Wheelock Family Theatre

Meenakshi B. Kumar, M.D., Functional Medicine, Family Medicine, and Palliative Care Physician, Visions HealthCare, Needham

Robin Mount, Co-Chair Emerita, Director of Career, Research, and International Opportunities, Office of Career Services, Harvard University, Cambridge

Sharon Rich, Financial Planner, WOMONEY, Belmont

Paul Rivenberg, Communications and Educational Outreach Coordinator, MIT Plasma Science and Fusion Center, Cambridge

Brooke Sandford, Parent Volunteer, Sudbury

Alane Shanks, President and Founder, The ARC Group, Brookline

Meegan Turet, Fine Arts Chair, Academy of the Pacific Rim Charter Public School, Hyde Park

Wheelock Family Theatre Supporters

Since 1981 Wheelock Family Theatre has been bringing professional productions and educational programs to children and families from communities throughout the Boston area. We are committed to keeping the quality of our productions high and our ticket and tuition prices affordable. But ticket income covers only about two-thirds of our costs. For the rest, we rely on the support of those generous institutions and individuals who value our work and understand the contribution we make to the community. To make a tax-deductible contribution to Wheelock Family Theatre, please contact Kay Arden Elliott at 617.879.2252 or visit www.wheelockfamilytheatre.org.

Institutional Supporters

Actors' Equity Foundation
 John W. Alden Trust
 Bank of America
 Boston Children's Hospital
 Boston Cultural Council
 Boston Parents Paper
 Jane B. Cook Charitable Trust
 Eaton Vance
 Gonzalez & Associates, P.C.
 The Japan Foundation, New York
 Massachusetts Cultural Council
 The Parthenon Group
 Peabody Foundation
 Clinton H. and Wilma T. Shattuck Charitable Trust
 Wheelock College
 Yawkey Foundation

Donors to the Annual Fund

Angels (\$1,000 and up)

Atlantic Philanthropies Director/Employee
 Designated Gift Fund
 Dr. Liliana Bordeianou and Eric B. Hermanson
 Carola Cadley
 Daughters Fund, a Donor Advised Fund of Combined
 Jewish Philanthropies, at the recommendation of
 Sharon L. Rich and Nancy E. Reed
 Priscilla Fales
 The Hanenberger Family
 Karen Kames
 Susan Kosoff
 Wendy Lement
 Brooke and Neal Sandford

Leading Players (\$500-\$999)

Charles G. Baldwin
 Sarah and Richard deLima
 Mr. and Mrs. John DeMarco, in honor of Audree Hedequist
 Kay Arden Elliott

Susan Gochenour and Steven Rosen
 The Hedequist Family, in honor of Audree
 Elizabeth Hoskins, Wheelock '56
 Greg Nash
 Laura Parkin
 Alane Shanks
 Stephanie Spector
 Jane Staab

Supporting Players (\$100-\$499)

Anonymous (3)
 Amy Almeida
 Liz and Jim Ayer
 Janet Bailey
 Mary Battenfeld and Bill Perkins
 John Bay
 Mindy Berman and Dan Solomon
 Shelley Bolman
 Danny Bolton
 Debra Borkovitz
 Amy Branger
 Barbara Cevallos
 Carole Charnow
 Marla Choslovsky and Paul Greenberg
 Courtney Cole
 Chris and Zu Cowperthwaite
 Tina and Harvey Crosby
 Andrea E. Doane
 Bess Emanuel and John Vyhnanek
 Barbara Elliott Fargo
 Isabel Fernandes
 Elizabeth Ferry
 Betsy and Ed Giles
 Leslie E. and Charles B. Gordon
 Scott Greb
 Drs. Shelly Greenfield and Allan Brandt
 Donna Griffith
 Marcia Head
 Tina Helm

Tammy Bishop Heredia and
 Francisco Heredia
 Ann-Penn Holton
 Dr. and Mrs. Cyrus Hopkins
 Anne and Jim Howard
 Eileen Hulnick
 Hannah Intille
 Louis Kampf and Jean Jackson
 Debby Keefe
 Steven M. Key, Esq.
 Stephen Kraffmiller
 Diane Levin
 Blair MacInnes
 June and Andrew Mackey
 Valerie Maio
 Ulla C. Malkus
 Carol and David Mersky
 Laura Morrison
 Grace Napier and William Monnen
 Antonia and Joseph Nedder
 Elaine and Joe Paster
 Susan Ryan
 David Salant
 Roy Schifilliti
 Betty and Herman Scott
 Dianne Sleek
 Ruthann Sneider
 Mr. and Mrs. George R. Sprague
 Bonnie St. Germain
 Diana Stilwell
 Alan Strauss
 Mary Ann Tobin
 The Tomasulo Family
 Thu-Hang Tran and Mark S. Day
 Joan Watts
 Susan Werbe
 Jerry Wheelock
 Drs. Katharine and Marshall Wolf
 The Youngen Family
 The Zaff Family

This list reflects gifts and pledges received between 7/1/14 and 3/3/15.

Wheelock Family Theatre extends deep appreciation to the following members of the Wheelock College community for their support:

President Jackie Jenkins-Scott; Stephen Dill, Marketing Manager; Michael Fesko, Director of Campus Services; Joan V. Gallos, VP for Academic Affairs; Marjorie Hall, Chair of Arts; Adrian K. Haugabrook, VP for Student Success and Engagement; Ed Jacques, Director of Facilities; Anne Marie Martorana, VP and Chief Financial Officer; Stephen Muzrall, Director of Major Gifts and Planned Giving; Larisa Pazmino, Director of Corporate Relations; Jennifer Rice, VP for Development and Alumni Affairs; Marta T. Rosa, Executive Director, Department of Government & External Affairs, and Community Impact; and Roy Schifilliti, VP for Administration, Institutional Effectiveness, and Innovation.

inspire a world of good | **WHEELOCK**
 COLLEGE



White and Williams LLP
is excited to support the
Wheelock Family Theatre's
2014-15 season.

99 Summer Street, Suite 1530
Boston, MA 02110-1248
617.748.5200

Delaware | Massachusetts | New Jersey | New York | Pennsylvania
whiteandwilliams.com



**Puppet
Showplace
Theater**

Celebrating 40 years!



25 Station Ave, Brookline
617-731-6400

www.puppetshowplace.org

Distinctly Different
International. Individual. Inspirational.



**BRITISH INTERNATIONAL
SCHOOL OF BOSTON**
A NORD ANGLIA EDUCATION SCHOOL



Academically rigorous and internationally focused,
preparing students for the global future.

Featuring the International
Baccalaureate Diploma Programme
Serving toddlers through high school students.

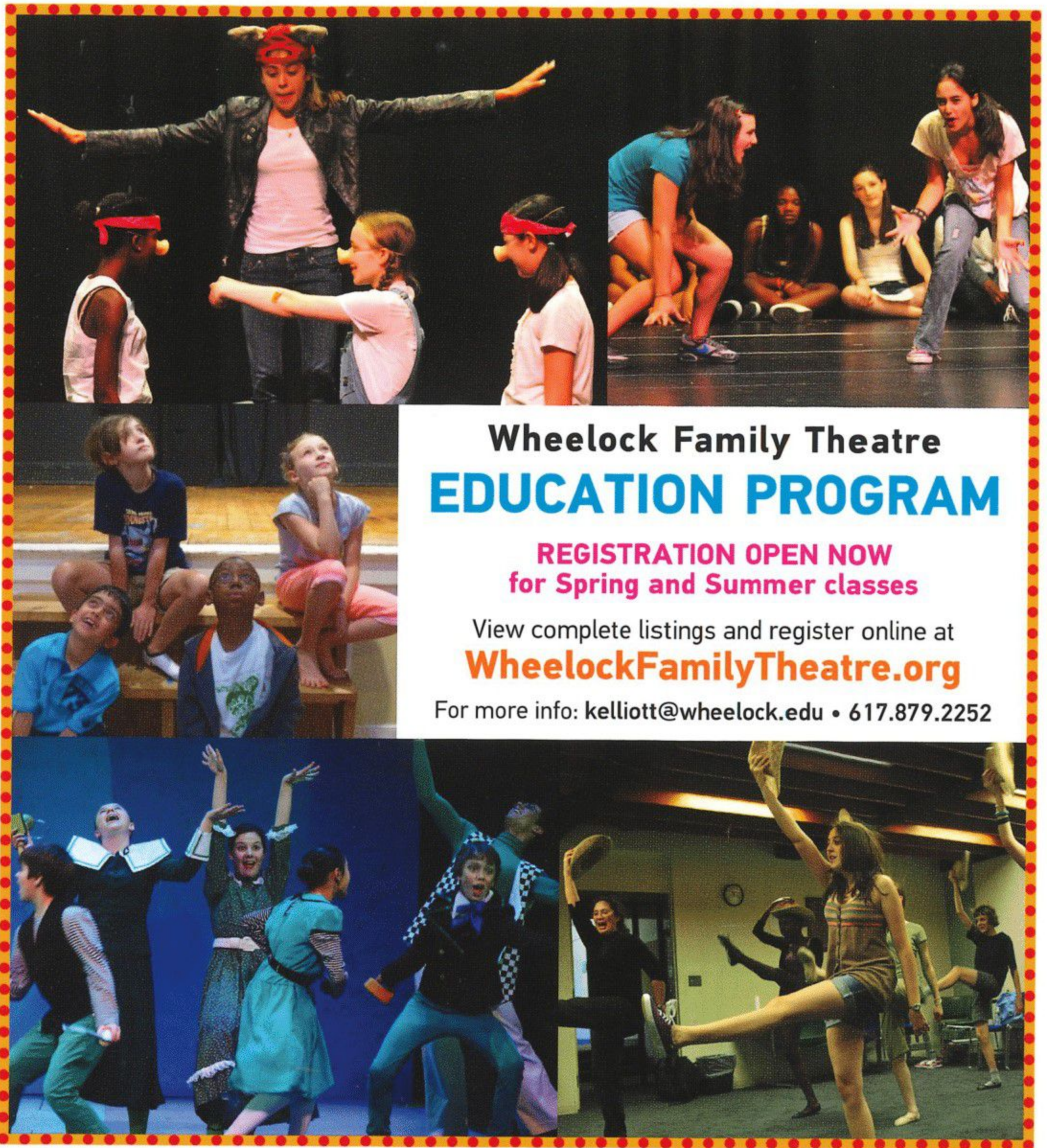
**CALL TODAY
FOR A TOUR**

Discover the benefits
of a personalized education

617.522.2261

admissionsbsb@wclschools.org

bisboston.org



Wheelock Family Theatre
EDUCATION PROGRAM

REGISTRATION OPEN NOW
for Spring and Summer classes

View complete listings and register online at
WheelockFamilyTheatre.org

For more info: kelliott@wheelock.edu • 617.879.2252

Best Wishes and Continued Success
LILLIAN GONZALEZ, CPA, MST, CSEP

14 Page Terrace, Stoughton, MA 02072
(781) 344-1040 FAX (781) 344-4449 www.go-cpas.com

CERTIFIED PUBLIC ACCOUNTANTS

• ACCOUNTING • AUDITING • TAXES • FINANCIAL PLANNING • RETIREMENT PLANNING • ESTATE PLANNING

TENACRE SCHOOL

Pre-K-Grade 6 • Coed



*Tenacre students develop into
critical thinkers, confident learners,
and caring citizens.*

www.tenacrecds.org • 78 Benvenue Street, Wellesley

baystateparent

A PROUD SUPPORTER
OF THE ARTS

AVAILABLE AT OVER 1800
LOCATIONS ACROSS
MASSACHUSETTS
& ONLINE

2 EDITIONS SERVING
CENTRAL/EASTERN
& WESTERN MA

508-865-7070



baystateparent.com



SHAWNA
SHENETTE
PHOTOGRAPHY





Learn more at www.parthenon.com



PARTHENON

Parthenon is a proud sponsor of the **Wheelock Family Theatre**.

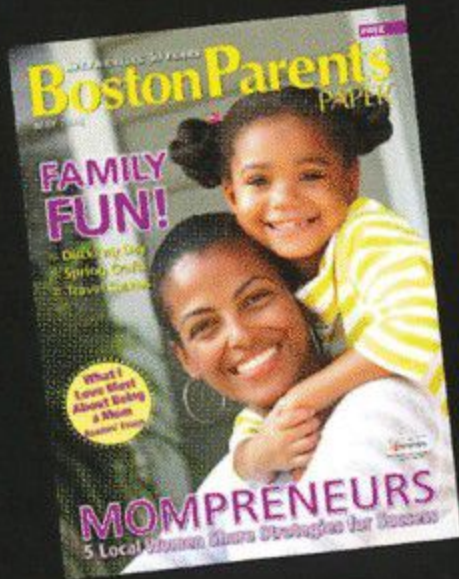
About Parthenon and EY

Parthenon combined with Ernst & Young LLP on August 29, 2014. Parthenon is a leading advisory organization focused on strategy consulting. We are committed to combining our unconventional thinking with our clients' smarts to deliver actionable strategies. In today's complex business landscape, creativity has become a necessary ingredient for sustained success. Together with EY, we have an ideal balance of strengths - specialized expertise with broad executional capabilities, intimate client relationships with larger networks of support, and proven processes along with a progressive spirit - to unlock opportunity for our clients, amplify the impact of our strategies, and make Parthenon the global partner of choice for business leaders.



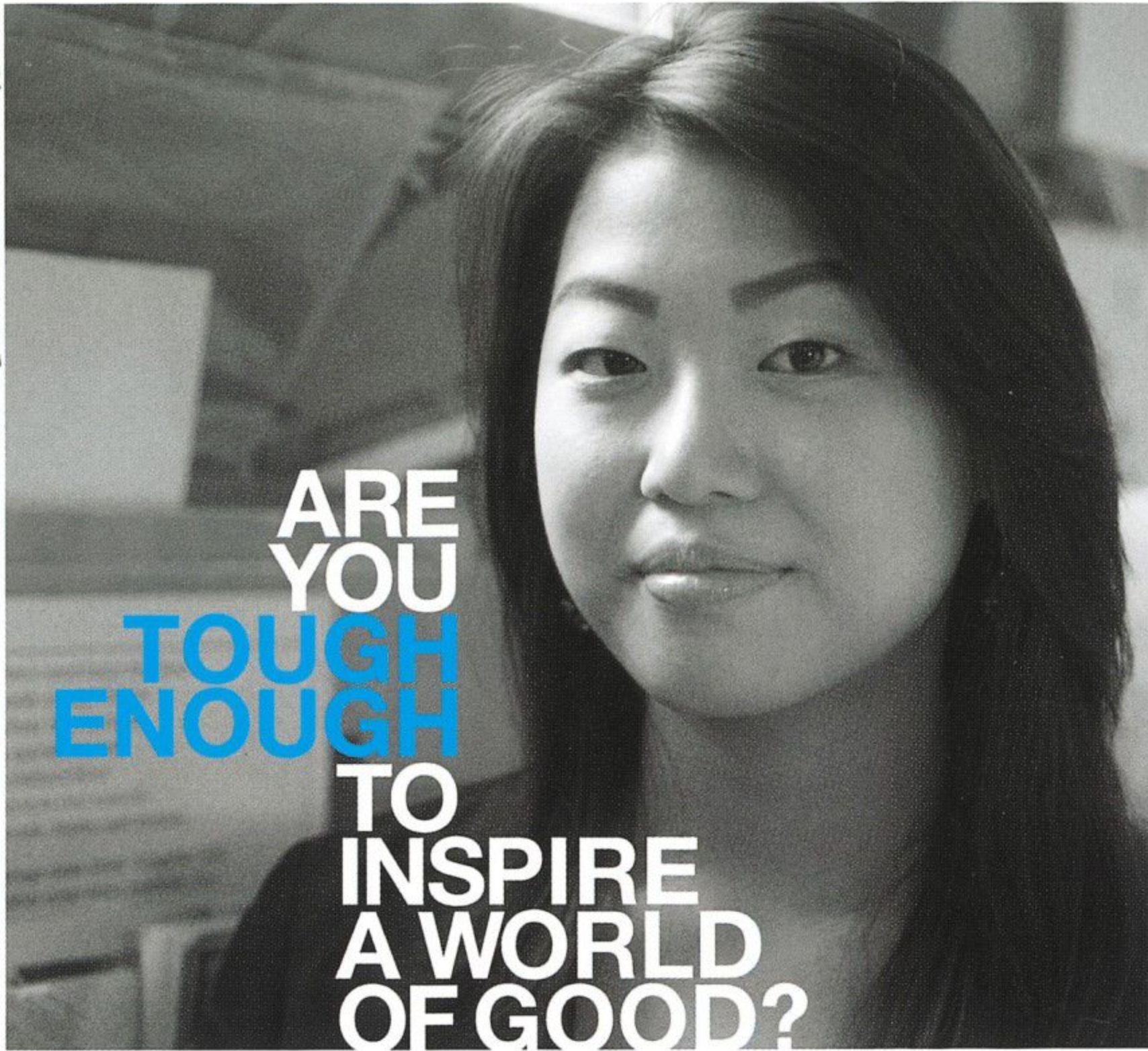
BostonParents PAPER

Wishing Wheelock Family Theatre another successful year!
Pick up a Boston Parents Paper monthly or visit us online at
www.bostonparentspaper.com



"Like" us on Facebook – facebook.com/bostonparentspaper
Follow us on Twitter – twitter.com/bostonparents





In a world of injustice, nothing ever changes—until someone is tough enough to change the existing order. At Wheelock, our mission is to improve the lives of children and families. Everything we do, from academic programs to community service and partnerships to advocacy has our mission at its core. It's not easy. Just worth it. Are you tough enough to inspire a world of good?

Learn more at wheelock.edu/toughenough

inspire a world of good | WHEELOCK
COLLEGE