

Lord of the Flies

THE NEW ENGLAND PROFESSIONAL PREMIERE



Wheelock Family Theatre
October 28 – November 20



celebrating 25 years
of award-winning family theatre



Wheelock Family Theatre

celebrating 25 years of award-winning family theatre

Wheelock Family Theatre creates intergenerational and multicultural productions that provide a shared experience for the whole family. Among increasingly few institutions, we are committed to serving and supporting families of all kinds. Our productions celebrate the diverse range of families found in the world today and seek to unite them in the shared experience of live theatre. We are especially dedicated to those who are historically under-served: people of color, people with disabilities, and low-income families. We know that it is not only children who are "at risk" in our society – but entire families and communities.

We are devoted to the ideal of complete access and reject the notion that the arts should be available only to audiences of privilege. Our play selection, casting policy, affordable ticket prices, education programs, and access provisions for people with disabilities reflect an unwavering commitment to inclusive, community-based theatre. We believe theatre is a crucial element of human experience. It is both a means of self-revelation and a basis for empathy with others; it inspires both individualism and responsibility through the giving and the receiving of human experience.

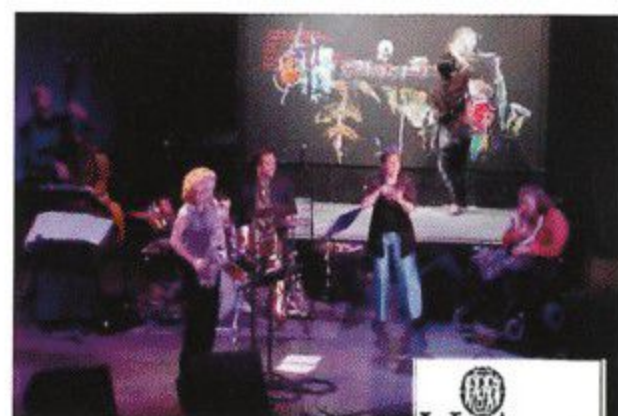
Wheelock Family Theatre Anniversary Events

Mark your calendar! In addition to our three productions, we have exciting special events in store to celebrate **25 years of award-winning family theatre:**



In December, we'll present **'So Kaye: The Songs of Danny Kaye**, a performance by cabaret artist John O'Neil and special guest Nina Vansuch. This "tongue-twisting tour de force" showcases songs, stories, and monologues culled from Danny Kaye's illustrious career. **(Sunday, 12/4, 2 pm)**

March brings **JazzArtSigns** to WFT - an interactive fusion of improvisation, music, visual art, and language, founded by veteran jazz vocalist Lisa Thorson. This universally accessible concert experience features world-class jazz musicians, an improvisational painter, American Sign Language interpreters, live audio description, and text captioning. **(Thursday, 3/9, 7:30 pm)**



co-sponsored by VSA arts



Our 25th season finishes with a bang with two big galas: the 2006 **WHEEL Award** in May and the **Greatest Cast and Crew Party Ever** in June. Stand by for more information on these events - and come celebrate with us as often as you can.

It won't be a party without you!



October/November 2005

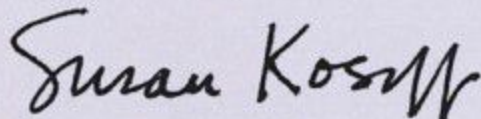
Dear Theatre-goer,

Welcome to our 25th anniversary season - just cause for jubilation! September found us deeply engaged in bringing *Lord of the Flies'* New England premiere to life. It has been an exciting and challenging start to our season-long celebration of 25 years of making professional theatre accessible for all.

We were thrilled to receive a wonderful birthday present this fall from the John F. Kennedy Center for the Performing Arts and Christopher Reeve Foundation: the LEAD Award for exemplary leadership in the inclusion of people with disabilities in the performing arts. While this honor acknowledges our history of accomplishments, it also inspires us to continue to think creatively about ways to reach and serve new audiences.

In that spirit, we open the season with a play that, as it resonates with current world events, allows us to draw on the young people trained in our education program, bring excellent literature to the stage, and continue to expand the notion of family theatre. Working on this play has been a transformative experience for cast members and artistic team alike. If you agree that theatre should challenge, as well as entertain, that all of life's possibilities should be examined, then you are in for an electrifying experience.

Sincerely yours,



Susan Kosoff

Producer



**BEST OF
BOSTON
2004**
Awarded by Boston magazine

Henry Bear's Park



For toys and books:

685 Mass Avenue
Arlington, MA 02476
781-646-9400

19 Harvard Street
Brookline, MA
617-264-2422

361 Huron Avenue
Cambridge, MA
617-547-8424

www.henrybear.com

The Wheelock Family Theatre is dependent on performance income and contributions. Your support is needed to sustain the Theatre. Contributions are tax deductible to the extent allowable by law and may be sent to the Wheelock Family Theatre, 200 The Riverway, Boston, MA 02215-4176.

WFT is supported in part by the Actors' Equity Foundation; Bank of America; c2 (caption coalition) inc; The Massachusetts Cultural Council, The Peabody Foundation; The Edith Glick Shoolman Children's Foundation; the Richard and Susan Smith Family Foundation (Richard and Susan Smith; John, Amy, Jennifer, and James Berylson; Robert and Dana Smith; Brian and Debra Knez, trustees); Time Warner Book Group; Wheelock College; VSA Massachusetts; and The Yawkey Foundation.



Toys for children
of all ages

Boing!
JP's Toy Shop

visit us in person or on the web

729 Centre Street
Jamaica Plain, MA 02130
617 522-7800
www.boingtoys.com

SAMET & Co. PC

CERTIFIED PUBLIC ACCOUNTANTS &
RESOURCEFUL BUSINESS ADVISORS

Norman P. Posner, CPA

Partner

normanposner@samet-cpa.com

Tel: (617) 731-1222

Fax: (617) 734-8052

www.samet-cpa.com

1330 Boylston Street, Chestnut Hill, MA 02467

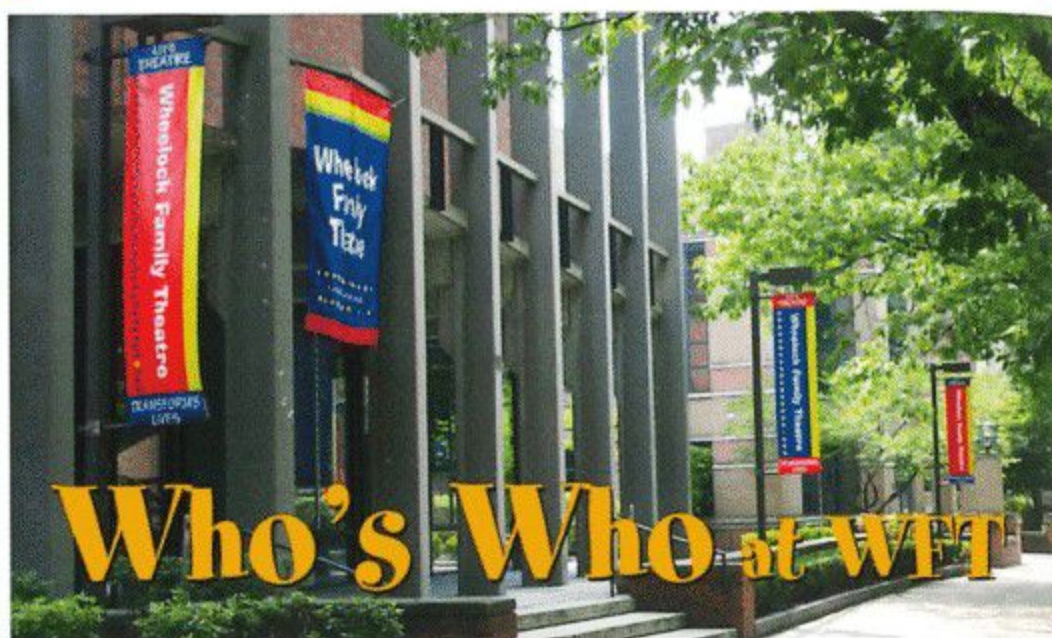
TERRY HANLEY

AUDIO SYSTEMS

Incorporated

(781) 932-5300

www.terryhanleyaudio.com



Andy Aldous (Sound Designer) is thrilled to be back as a part of WFT's 25th anniversary. Andy has worked on many productions here, from *Our Town* in 1999 to *The Beanstalk, the Giant, and Jack* last season. Andy was the production sound engineer at the Huntington from 1994 to 2004. He now works in industrial/commercial/audio visual, system consultation, and acoustic treatments.

Laurie Aldous (Production Stage Manager) is very excited to return to WFT for a third season and to be a part of the Theatre's 25th anniversary. A Wheelock College student when WFT premiered *A Little Princess* in 1994, Laurie served on the production's crew. She's looking forward to working on the production again, this time as stage manager. Happy birthday WFT!

Andrew Barbato (Jack) is thrilled to be working with WFT for the first time. Professional credits include *Shadowlands, A Christmas Carol, The Who's Tommy, Pal Joey* (Stoneham Theatre), and *Cinderella* (North Shore Music Theatre). He was the recipient of two MHSDG Awards for his portrayal of Tartuffe in *Tartuffe* (Drama Festival 2005). Andrew has been a proud member of the Stoneham Theatre's Resident Youth Ensemble for the past two years. Favorite roles include Joseph in *Joseph . . . Dreamcoat*, Jack in *Into the Woods*, and Sir Andrew in *Twelfth Night*. He thanks his loving family and beautiful friends for their love and support!

Jacob Brandt (Piggy) has theatre credits that include Jason in *Falsettos* at the Huntington Theatre; Josh Dance/Boy in *Approaching Moomtaj* at New Repertory Theatre; Young Guido in *Nine*, David in *Rags*, and Charlie Bates in *Oliver!* at the Turtle Lane Playhouse; and Young Prince in *The Phantom Tollbooth* and School Child in *The Trumpet of the Swan*

(continued on page 5)

WHO'S WHO (continued from page 4)

at WFT. His film credits include Tim in *Rooms for a Child-Father*, a Harvard University independent film, and his writing credits include "Irving the Frog," performed as *The Ballad of Irving the Frog* at Vital Children's Theatre in New York City. Jacob lives in Newton and is an eighth grader at the Park School in Brookline.

Armando Carlo-Gonzalez (Sam), a 13-year-old "sixy" at Boston Latin School, has been acting since the age of six, when he took his first improv class at WFT and decided he enjoys anything that has to do with theatre. He appeared in WFT's *The Jungle Book* and *Pippi Longstocking* and as Winfield in the Boston University production of *Grapes of Wrath*. For the last two summers, he has had a blast being a WFT Story Trouper - and, by now, he's taken a ton of classes at WFT, too. He also enjoys writing, reading, basketball, and football. Armando lives in Jamaica Plain with his Moms, sister Celín, and uromastyx lizard, Rocco.

Nick Carter (Bill) is happy to be back at WFT, where he has been seen in *The Hobbit*, *The Prince and the Pauper*, *Pippi Longstocking*, *The Sound of Music*, and, as Howard, in *Inherit the Wind*. Recent credits include Roger in *Grease* (Riverside Theatre Works) and Manolin in *The Old Man and the Sea* (Stoneham Theatre). He has been a member of the Young Company at the Publick Theatre for the past two summers, where he was seen as Lorenzo in *The Merchant of Venice* and Antipholus of Ephesus in *The Comedy of Errors*. He has also been a member of the young men's chorus of Youth Pro Musica. Nick is a tenth grader at the Brimmer and May School in Chestnut Hill. Special thanks to all at WFT and to his friends and family for their continued support.

Bikrum Chahal (Simon) is a freshman at Milton Academy who has been seen here previously in *The Will Rogers Follies* and *The Phantom Tollbooth*. He has also performed at his school and at the Huntington Theatre. Along with acting, Bikrum enjoys singing and playing both football and soccer.

Ben Duvall (Eric) is thrilled to be back at WFT, where he last appeared in *The Phantom Tollbooth*. He has also appeared in *Oliver!* at the Turtle Lane Playhouse; *Inherit the Wind* and *All My Sons* at the Footlight Club; and in *Scrooge: The Musical* with Needham Community

(continued on page 6)

BODY BY BRANDY

AND

THE SOUTH END COMMUNITY HEALTH CENTER

present . . .

THE HOUSE IS GETTING FIT!TM

FAMILY FITNESS VIDEO
DESIGNED TO GET THE ENTIRE FAMILY FIT!

ONLY
\$19.99
PLUS SHIPPING
AND HANDLING

ORDER TODAY WWW.BODYBYBRANDY.COM OR 617.442.2187

Name _____

Email _____

Address _____

Phone _____

Cell _____

Quantity _____

\$19.99
plus shipping and handling \$3.00

Send this order form to:
Body by Brandy
2181 Washington Street, Roxbury, MA 02119

BEST WISHES & CONTINUED SUCCESS
FROM
LILLIAN GONZALEZ, CPA, MST, CSEP
TERRY CREEDEN, CPA

331 PAGE STREET
STOUGHTON, MA 02072
(781) 344-0850
FAX (781) 344-6960
www.sgc-cpa.com

S, G & C

SANDBERG, GONZALEZ & CREEDEN, P.C.
CERTIFIED PUBLIC ACCOUNTANTS
ACCOUNTING, AUDITING, TAXES,
FINANCIAL AND ESTATE PLANNING

PROGRESSIVE EQUITY STRATEGIES

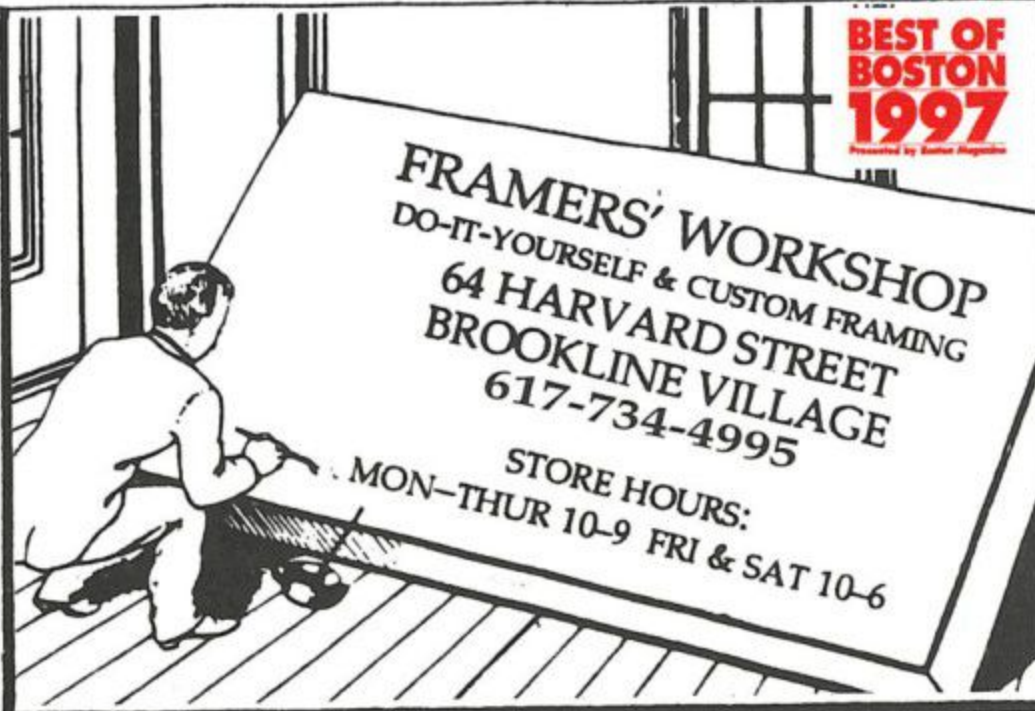

Terry Creeden, CPA
Lillian Gonzalez, CPA, MST, CSEP

331 Page Street
Stoughton, MA 02072

Toll-Free 888-340-4330
781-344-4330 fax 781-344-6960

BEST OF BOSTON 1997
Presented by Boston Magazine

FRAMERS' WORKSHOP
DO-IT-YOURSELF & CUSTOM FRAMING
64 HARVARD STREET
BROOKLINE VILLAGE
617-734-4995
STORE HOURS:
MON-THUR 10-9 FRI & SAT 10-6

The Children's Book Shop
237 Washington St. • Brookline
617-734-7323

WHO'S WHO (continued from page 5)

Theater. A sixth grader at Bigelow Middle School in Newton, Ben enjoys karate, nature, biking, walking his dog Rylie, and playing double bass with the Newton All City Orchestra. Thanks to his family for all their support.

Neil Gustafson (Fight Coordinator) has previously choreographed fights for *Hamlet*, *Romeo and Juliet*, and *The Prince and the Pauper*. Trained as a combatant with the Society of American Fight Directors, he has taught classes in stage combat for WFT.

Tadesh Dow Inagaki (Henry) is a student at Boston Latin School, where he plays first violin in the Junior String Orchestra and enjoys participating in the Improv Comedy troupe. He plays the drums (rock and jazz) and guitar and enjoys playing baseball, snowboarding, tennis, swimming, photography, and creative writing. Tadesh made his WFT debut in multiple roles in the chorus in last season's *The Beanstalk, the Giant, and Jack*. He also appeared as *Hamlet* in a 2005 production at his school and performed a supporting role in the Camp Encore production of *Man of La Mancha* last summer. Tadesh has participated in theatre classes at WFT for the last three summers. He appreciates all of the terrific teachers/producers/directors he has had an opportunity to work with at WFT.

Danila Korogodsky (Set Designer) comes from St. Petersburg, Russia, where he studied at Leningrad Theater Institute and worked as a resident designer at the Theater for Young Spectators. Since his first US show at HTY Honolulu in 1989, Danila has designed and taught in America. He is currently the head of stage design at CA State University, Long Beach, and a resident designer at CA Repertory. Recent credits include *Dante Club*, *Knights of the Round Table*, *Lamark*, *Ivona Princess of Burgundia*, *Among the Chosen Few*, and *Pilgrims* (Cal Rep); *Die Burgschaft* (Spoleto Festival USA); *Between Two Worlds* (Lyric Opera of Chicago); *Queen of Spades* (Nantes Opera, France); *Uncle Vanya* (Bonn City Theatre, Germany); *Curlew River* (Japan Society, NY); *Reluctant Dragon* (MN Children's Theatre); *View from the Bridge* (Opera Theater of Pittsburgh); and *Ithaka* (Pittsburgh Playhouse).

(continued on page 7)

WHO'S WHO (continued from page 6)

Susan Kosoff (Director), a founder of WFT and a professor of theatre and education at Wheelock College, has directed many productions here. She serves on the boards of Cultural Access Consortium and StageSource, New England's alliance for theatre artists and producers.

Matthew T. Lazure (Associate Technical Director/Props), most often seen behind the scenes at WFT, enjoyed playing Father of the Bride in last season's *The Beanstalk, the Giant, and Jack*. A visual artist, Matthew has also worked with the Gold Dust Orphans and Provincetown Theatre Co. He's glad to be back for a fourth season at WFT.

Jacob Liberman (Ralph), last seen here as Rolf in *The Sound of Music* and as Howie in *Ramona Quimby*, is delighted to be in his ninth WFT production. Recent credits include *Fame* (North Shore Music Theatre), Jack in *Into the Woods* (Wellesley Players), and Jeff in Boston Theatre Works' acclaimed production of *Kimberly Akimbo*, for which he received a 2005 IRNE nomination. Other favorite WFT credits include *The Phantom Tollbooth*; *Pippi Longstocking*; *The Will Rogers Follies*; *Tuck Everlasting*; *Hello, Dolly!*; and *Anne of Green Gables*. A senior at Gann Academy, Jacob sends his love and thanks to his WFT family, especially Sue, Jane, Laurel, Laurie, Jonathan, Matt, and Charles for bestowing the gift of growing up on this stage. Jacob is also a proud member of the celebrated theatre community which has studied and played at Stagedoor Manor. Much love and thanks to Mom, Dad, Katie, and Mimi.

Vince Lombardi (Audio Describer) finds audio-description a wonderful way to combine his love for theatre with his commitment to the blind community. Previous credits include productions at Worcester Foothills, Yale Rep, the Colonial, and the Huntington. Vince was named after his extremely inventive grandfather, who had no connection to, nor any knowledge of, American football. He sends love to his beautiful children and exquisite granddaughters.

Bill Mootos (Naval Officer) is very pleased to return to WFT, where he appeared last spring in *The Beanstalk, the Giant, and Jack*. Other recent projects include *Arcadia* and *The Comedy of Errors* at Boston's Publick Theatre, *Perfect Crime*

(continued on page 11)

Babysitters and Nannies



617-739-KIDS

www.parentsinapinch.com



Providing both buyers and sellers with the highest quality professional real estate brokerage services available.

Chobee
Hoy associates



18 Harvard Street
Brookline, Massachusetts
02445

617 739 0067

FamiliesFirst

Parenting Programs

Workshops, Consultations,
& Professional Development
For parents and professionals

www.families-first.org (617) 868-7687 x.11



Proud supporters of
Wheelock Family Theatre

gourmetcaterers.com Always in good company

William Golding's
Lord of the Flies

adapted for the stage by Nigel Williamson

DIRECTOR
Susan Kosoff

SET DESIGNER
Danila Korogodsky

LIGHTING DESIGNER
Rich Testa

CHOREOGRAPHER
Laurel Stachowicz

FIGHT COORDINATOR
Neil Gustafson

COSTUME DESIGNER
Marian Piro

SOUND DESIGNER
Andy Aldous

ASL INTERPRETERS
Jody Steiner
Michael Sullivan

AUDIO DESCRIBER
Vince Lombardi

PRODUCTION STAGE MANAGER
Laurie Aldous*

THE CAST

Ralph **Jacob Liberman***

Jack **Andrew Barbato**

Piggy **Jacob Brandt**

Roger **Russell Woron-Simons***

Sam **Armando Carlo-Gonzalez**

Eric **Ben Duvall**

Simon **Bikrum Chahal**

Henry **Tadesh Dow Inagaki**

Maurice **Dan Reulbach**

Bill **Nick Carter**

Perceval **Carlos Rojas**

Naval Officer **Bill Mootos***

Naval Officer **Samuel Young***

Lord of the Flies is produced by special arrangement with Simpson Fox, London, England.

There will be two 15-minute intermissions between the acts.

Ask the House Manager for individual sound enhancement devices. The taking of photographs and use of recording devices is strictly forbidden. Please turn off cell phones and beepers. Please, no eating or drinking in the theatre.

WFT's wireless amplification system was made possible by a generous grant from the Cabot Family Charitable Trust.

Costumes for this production were created with the support of Suzanne Weinstein in honor of Frederic Weinstein.

Open captioning provided in collaboration with c2 (caption coalition) inc, www.c2net.org.

Wheelock Family Theatre is a member of Massachusetts Advocates for the Arts, Sciences, and Humanities (MAASH); StageSource, the Alliance of Theatre Artists and Producers; the Theatre Artists' Marketing Alliance (TAMA); and Theatre Communications Group, the national organization for the American Theatre.



*Member of Actors' Equity Association, the Union of Professional Actors and Stage Managers in the United States. The Wheelock Family Theatre is operating under the terms of a Developing Theatre's Program of Actors' Equity Association. The contract used is a Letter of Agreement.

Wheelock Family Theatre

STAFF

Producer	Susan Kosoff
General Manager/ASM	Jane Staab*
Education Program Director	John Bay
Publicity and Marketing Director	Charles G. Baldwin
Assistant to the Producer/Grantswriter	Kay Arden Elliott
Access Coordinator	Jody Steiner
Box Office Staff	Shauday Johnson-Jones, Jesse Washburn
Technical Director	James H. Williston
Associate Technical Director/Props	Matthew T. Lazure
Costume Coordinator	Lisa Simpson
Assistant to the Director	Priscilla Fales
Assistant to the Set Designer	Jeffrey Eisenmann
ASL Consultant	Tom Bourque
Dance Captain	Cassandra Pasley
Master Electrician	Henry Drummond
Sound	Jesse Washburn
Captioning	Ruth Kahn
Concessions	Nycholle Eckert, Kenny Maura

25th ANNIVERSARY CELEBRATION COMMITTEE

Matt Damon and Victoria Rowell, Honorary Chairs; Judy Anderson, Steve Aveson, Martha C. Bakken, Elmer Bartels, Judy Berk, Louis Casagrande, Carole Charnow, Peggy Charren, Eleanor Chin, Edward F. Coakley, Jeff Coburn, Judith Contrucci, Scott Edmiston, Andrea Genser, Lillian Gonzalez, Alicia Gordon, Charles B. Gordon, David Govostes, Sheldon Harnick, Susan Hartnett, Marian L. Heard, State Representative Patricia Jehlen, Martha Jones, Norton Juster, Joyce Kulhawik, Sara Lawrence-Lightfoot, Barbara Cole Lee, Diane Levin, Frances Litman, Gordon L. Marshall, Mayor Thomas & Angela Menino, Robin Mount, Lynne Rosansky, Steve Rothstein, Stanley A. Rumbaugh, Nina Schuessler, Michelle Seligson, Sarah-Ann Shaw, Libbie Shufro, Candelaria Silva, Anna Deavere Smith, Steve Smith, James Spencer, Kate Taylor, Lisa Thorson, Charles E. Walker, Jr., Liz Walker, Charlie Washburn, Valora Washington, Suzanne Weinstein, John B. Welch, Linda Whitlock, Tony Williams, Celeste Wilson

FRIENDS OF THE FAMILY THEATRE

Robin Mount, Pat Maye-Wilson, Tricia Norton, Co-Chairs; Jory Agate-Mays, Jackie Alexander, Janice Allen, Beth Alperin, Joan and Leroy Ashwood, Jane Bache, Kathleen Kirk-Bishop, Pat and Michael Blank, Cathy Buckley, Sue Cohen, Pam Dempsey, Joanne Driscoll, Wendy Drobnyk, Joyce and Larry Eldridge, Jane Epstein, Bonnie Faith-Smith, Donna Feinberg, Karin Froom, Keziah Furth, Eileen Gallagher, Carol Izen, Robert Kaim, Debby Keefe, Joni Liberman, Joanne Nelson, Evelyn Perkins, Donna Reulbach, Sharon Rich, Judi Rizley, Donna Robinson, Janet Rosen, Paula Ross, Ann Sorvari

CREWS

Jennifer Provoost (crew chief); Nicole Alba, Jacy Armenti, Jessica Gabrielson, Iris Harrington-Woodard, Erin Jenkins, Alycia Laudani, Lynnemarie Mahoney, Tammy Myers, Jessica Nickerson, Kelly Piantigini, Lauren Rudy, Brian Schechter, Stacy Seidner, Liz Timmerman, Sheena Witkum

VOLUNTEERS

Kunbi Adewummi, Mollie Deckert, Stacey Fairweather, Melissa Fedyschen, Steven Fultz, Mike Green, Caitlin Cross Hansen, Jennifer Hayes, Elbert Joseph, Mike Kane, Emily Kosoff, Liza Levy, Lindsey Medeiros, Jennifer Oh, Aislinn Sanchez, Daniel Weber, Danielle White

WORK/STUDY STUDENTS AND INTERNS

Jacy Armenti, Amelia Brady-Cole, Chris Brucato, Katie Carroll, Nicholle Cordeiro, Alicia Davis, Nina Giarrusso, Ashley Gardner, Iris Harrington-Woodard, Erin Jenkins, Alycia Laudani, Lynnemarie Mahoney, Jessica Nickerson, Kelly Piantigini, Shawna Samuels, Stacy Seidner, Sheena Witkum

SPECIAL THANKS

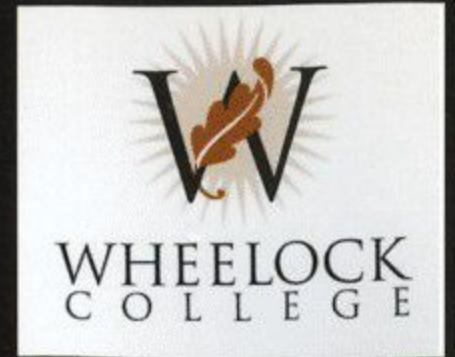
Kevin Greeley; Manny Heckley, Susan Mackey, Don Simpson, and members of the Wheelock College Facilities staff; Alice, Len, and Nicole Lazure; Ann Sorvari for the study guide; Nancy Viall Shoemaker for poster design; Chip Towle, Sandy Tubbs, and Nancy Johnson; the Office of the President and members of the Wheelock College community who have made this production possible.

We wish to thank all the people who have joined with us since the program went to press.



You have the **passion.**

We'll provide the **path.**



GRADUATE PROGRAMS

- Child & Family Studies
- Social Work
- Education
- Arts & Sciences

Call our Admissions Office Office at 617-879-2206
or visit us on-line at www.wheelock.edu for more information.

So close you can
hear the sizzle.



LONGWOOD
GRILLE + BAR



Inside the Longwood Galleria • 342 Longwood Avenue, Boston • 617-232-9770

TheaterMania.com

is proud to support

Wheelock Family Theatre

Visit www.theatermania.com for the latest theatre news, reviews and tickets.
Join for free and you may win tickets to a hit show!

WHO'S WHO (continued from page 7)

at Foothills Theatre, *The Last Sunday in June* with SpeakEasy Stage Company, *Private Lives* at Maine's Public Theatre, and *The Dazzle* at Stoneham Theatre. Previous credits include productions with the Huntington Theatre Company, the Lyric Stage, Merrimack Rep, Gloucester Stage Company, the Vineyard Playhouse, Coyote Theatre, Ryan Landry's Gold Dust Orphans, and many others. Bill is the current President of the New England Branch of the Screen Actors' Guild, a member of AEA's Boston Liaison Committee, a Board Member of StageSource, and a founding member of the newly formed Village Theatre Project. Many thanks to Sue and Jane.

Marian Piro (*Costume Designer*) co-founded Costumes by Illusions in 1986 and designs for theatres nationally and locally. In and about the Boston area, the company has worked with Chiswick Park, the Lyric, North Shore, and WFT. Among the many shows she has designed professionally are *The King and I*, *Lend Me a Tenor*, *As You Like It*, *The Man Who Came to Dinner*, *The Secret Garden*, and *Chicago*.

(continued on page 12)

NE MOVES MORTGAGE

An Affiliate of Coldwell Banker Residential Brokerage

NE Moves Mortgage, the premier mortgage company affiliated with Coldwell Banker Residential Brokerage, is proud to support the Wheelock Family Theatre.

Mark Grassia & Kevin Greeley, Senior Loan Officers
617-864-8566 ext. 256

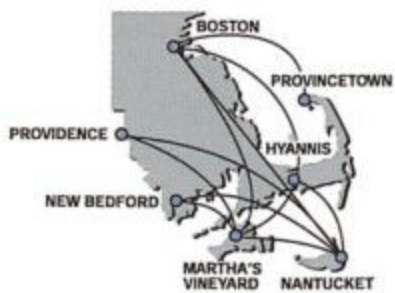
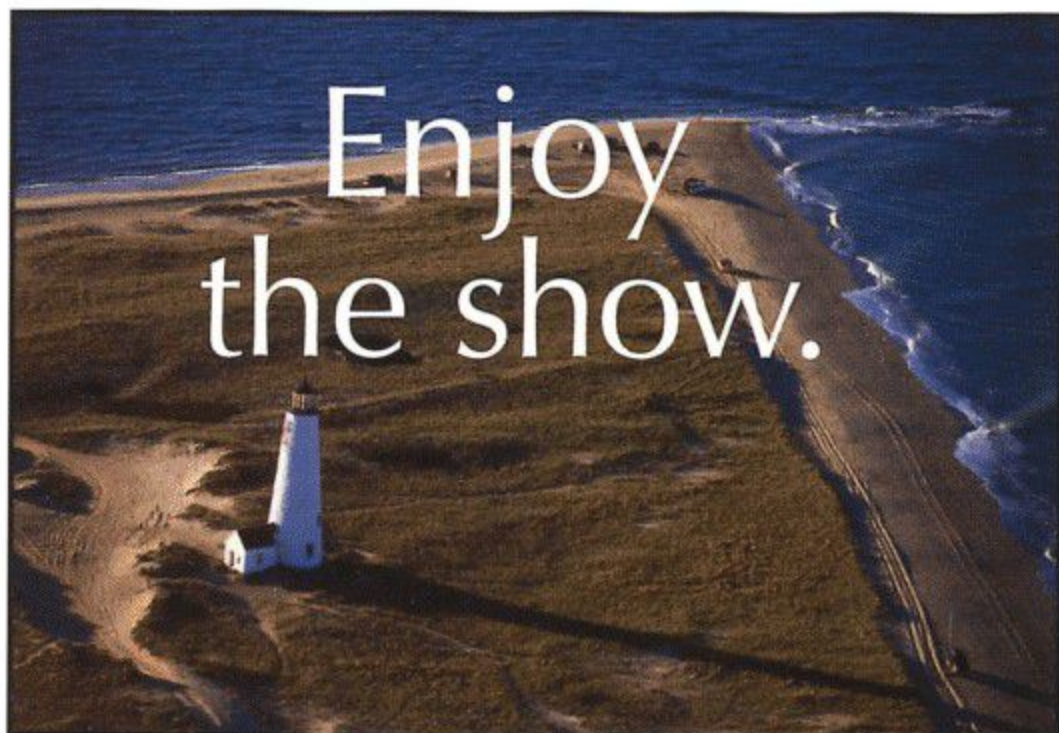


celebrating 25 years

NEEDHAM CHILDREN'S CENTER, INC.

- INFANT ■ TODDLER ■ PRE-SCHOOL
- PRE-KINDERGARTEN ■ KINDERGARTEN
- AFTERSCHOOL ■ CAMP

858 Great Plain Avenue, Needham, MA 02492
781-449-4486



Take in the scenery and experience our friendly service on fast, frequent flights to the Cape and Islands.

Cape Air
Your wings for the Cape & Islands.

1-800-352-0714 • www.flycapeair.com/cape



Jewish Community Centers of Greater Boston Preschools

- Nurturing Children
- Embracing Families
- Mentoring Teachers
- Creating a Caring Jewish Community

Quality preschool learning experiences for children ages 1-5 offering full/part day; full/part-week; school/full year flexibility.

Located in:
ACTON • WAYLAND
BROOKLINE/BRIGHTON
NEWTON • STOUGHTON
Call 617-558-6532

AMBIENCE Boston

INTERIOR DESIGN
FLORAL DESIGN

E. Ann Whittington
Proprietor

P.O. Box 181232
Boston, Massachusetts 02118
Tel. (617) 267-3049
E-mail: annwhittington@comcast.net



The Group Center offers support and educational groups in a warm and inviting center in Brookline. Visit us at www.thegroupcenter.com to see our parenting, coaching, and other life situation groups or call 617-739-9363.

The GROUP CENTER

conversations at the crossroads

BOSTON CHILDREN'S OPERA

See an Opera!

Cinderella

December 2 - 11

Treasure Island

March 2 - 12, 2006

SNOW WHITE

late May - early June 2006

See a show or sing with us!



Come & join the fun! 617-628-0063

WHO'S WHO (continued from page 11)

Dan Reulbach (*Maurice*) is thrilled to be back for his fourth WFT production. He was previously seen here in *The Beanstalk*, *the Giant*, *and Jack*; *Pippi Longstocking*; and *The Trumpet of the Swan*. A sophomore at Milton High School, Dan enjoys playing guitar, going to concerts, playing football and soccer, and running track.

Carlos Rojas (*Perceval*), a sixth grader at the James P. Timilty Middle School, appeared in the Actors' Shakespeare Project inaugural production of *Richard III* in the role of Richard, Duke of York. Other credits include Lucius in *Julius Caesar* (Actors' Shakespeare), The Scarecrow in *The Wizard of Oz* (Roxbury Community College), and Mamullius in *The Winter's Tale* (Boston Conservatory). Next up in December is the title role in *Oliver! The Musical* with Friendly Thimble Droll Players. Carlos sings with the Hennigan chorus and studies dance (ballet, jazz, modern, and ethnic) at the Topf Center for Dance Education. He enjoys practicing guitar, writing songs, and rowing with the B-row team. Carlos has taken many classes at WFT and is excited to be working with such a great cast and crew. This experience at WFT has definitely been an incredible one!

Laurel Stachowicz (*Choreographer*) returns to WFT, having also choreographed *The Sound of Music*, *Ramona Quimby*, *Snow White*, *The Phantom Tollbooth*, *Pippi Longstocking*, and *The Will Rogers Follies* (for which she won the IRNE Award for Best Choreography). Other credits include *Ragtime* and *Chicago* (Foothills) and the East Coast premiere of *Aida* (Wachusett), as well as works with SpeakEasy

(continued on page 13)



Boston Trust & Investment
Management Company



Walden Asset Management
Investing for social change since 1975

**Good Luck on Your
2005- 2006 Season!**

One Beacon Street, Boston, Massachusetts 02108
Phone: (617) 726-7288

www.bostontrust.com – www.waldenassetmanagement.com

WHO's WHO (continued from page 12)

and Barrington Stage. Laurel recently finished her BFA in dance, graduating with high honors from Smith College. Thank you Jane, Susan, Michael, Molly, Nyssa, and this wonderful cast!

Jody Steiner (*ASL Interpreter*) is Access Coordinator at WFT and a nationally certified ASL/English interpreter. She is proud to have been associated with WFT for the past 15 years, and looks forward to the next 15.

Michael Sullivan (*ASL Interpreter*) is a freelance American Sign Language/English interpreter working in Boston. He has interpreted productions around New England and has been seen at WFT, the New Rep, and Boston Playwrights' Theatre. Michael is happy to return to Wheelock and would like to thank his beautiful fiancée, Lucy.

Rich Testa (*Lighting Designer*) is pleased to be starting his ninth season at WFT, where he has designed lighting for shows such as *The Phantom Tollbooth*, *The Will Rogers Follies*, *Pippi Longstocking*, and *Rebecca of Sunnybrook Farm* to name just a few. Other theatrical credits include: *Romeo and Juliet* at North Shore Music Theatre, *Don Giovanni* at Syracuse Opera, *Die Fledermaus* at Opera Memphis, *Bartered Bride* at El Paso Opera, and *Crossing Too* with The Alvin Ailey Rep Dance Co. Rich is the principal lighting

(continued on page 14)

THE PERFECT HOLIDAY GIFT

for someone you love who loves a good story:

tickets to see this charming musical at WFT

**Sara Crewe:
A Little Princess**

February 3 – 26

Buy them now and receive a **10 percent discount** with this coupon.



A child-centered, innovative Jewish day school serving families across a wide spectrum of Jewish beliefs and practices

K through 8 www.jcdsboston.org 617- 972-1733



Carolle Photography
Photography for the Performing Arts

headshots • productions • events • CDs • portraits

Kippy Goldfarb
617.426.9698 carollephoto@aol.com

Sodexho Dining Services at Wheelock College proudly support and congratulate the **Wheelock Family Theatre** for 25 years of entertaining all of our families.

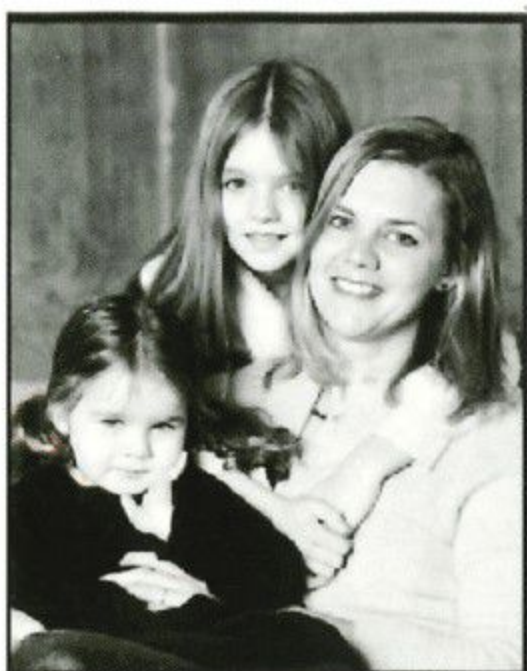


Arthur Blank & Company, Boston



supports the Wheelock Family Theatre

www.arthurblankco.com



Robin Golinski with daughters Victoria Maxfield, 10yrs, and Violet Maxfield, 4yrs.

We are so excited to be a part of the
Wheelock Family Theatre.
Have a terrific season!

Victoria

Robin Golinski

617-648-4473

rgolinski@prumaxfield.com

Robin



Prudential

Maxfield & Company
Real Estate Services

www.prumaxfield.com

VIOLET



DAVIO'S

75 Arlington St., Boston
617.357.4810 www.Davios.com

WHO'S WHO (continued from page 13)

designer with Testa Lighting Design (TLD), a design firm specializing in theatre, sporting events, industrial, and architectural lighting clients. His next project is to light the Nashville production of Radio City's Christmas Spectacular featuring the Rockettes, in conjunction with Agress Lighting Design.

James H. Williston (Technical Director) is pleased to join the WFT staff, having been seen here last onstage as the Baby Prince in *The Beanstalk, the Giant, and Jack*. He got his start in stage construction while a student at William Chrisman High School in Independence, Missouri, and majored in theatre at Oklahoma City University. James moved to Boston in 1997, where he has enjoyed simultaneous careers as professional actor, scenic carpenter, and stone mason (the latter as sole proprietor of Williston Stone).

Russell Woron-Simons (Roger) discovered acting in eighth grade, when he made his debut as the "good man" Charlie Brown. Currently a senior in high school, he is proud to be part of this production. (*Lord of the Flies* was one of his favorite books as a young teen.) Russ recently performed in *The Racing Life* in SlamBoston and is a member of Another Country Ensemble. He is passionate about Shakespeare and has enjoyed performing the roles of Angelo in the Publick Theatre's production of *The Comedy of Errors*, Gratiano in *The Merchant of Venice*, Hortensio in *The Taming of the Shrew*, and reading Sonnet #55 at the 2005 Sonnet-thon. Russ feels strongly that theatre can be used to make positive change in the world and is determined to be part of that possibility. To this end, he has played the part of John in MEDA's *The Mind/Body Dialogues*, a show that promotes awareness of body-image disorders and eating disorders. Thanks to everyone at WFT, Fran Weinberg, Lyrallen Kaye, Hawk Circle, his family, and his mentors.

Samuel Young (Naval Officer) is very happy to be returning to WFT. Previously, he has performed in *The Sound of Music*, *Inherit the Wind*, and *The Witch of Blackbird Pond*. He was last seen in the SpeakEasy/Boston Theatre Works' production of *Take Me Out* as Takeshi Kawabata. Thanks to all the people involved with this production.



BOSTON
BALLET
SCHOOL
2005 | 2006

Ages 3-Adult.
No prior experience
necessary.

BOSTON STUDIO
SOUTH END
(617) 456.6264

METROWEST STUDIO
NEWTONVILLE
(617) 456.6263

SOUTH SHORE
STUDIO, NORWELL
(617) 456.6273

www.bostonballet.org

Photo by Eric Antoniou

***Congratulations &
Continued Success Bringing
the Best of Children's Literature
to Life!***



THE BOSTON
Parents' Paper
617-522-1515

A strong cast comes from a solid community.



Congratulations to the Wheelock Family Theatre as they celebrate their 25th Anniversary. We proudly support their professional, intergenerational and multicultural productions. And we'd like to thank them for providing the community with wonderful and affordable experiences the whole family can enjoy.

 **Citizens Bank**
Not your typical bank.®