A woman with dark curly hair, wearing a blue long-sleeved dress with a white lace collar and a dark belt, is captured in a joyful dance pose in a grassy field. She is smiling and looking upwards. To her left is a large, dark tree with sparse white blossoms. The background is a clear blue sky. The overall scene is bright and evocative of a classic theatrical production.

# The Sound of Music

Music by Richard Rodgers  
Lyrics by Oscar Hammerstein II

**Wheelock Family Theatre**  
**February 4 - 27, 2005**

sponsored by

**Bank of America** 





# Give yourselves a round of applause.

Citizens Bank is proud to support  
the Wheelock Family Theatre.



**CITIZENS BANK**

Not your typical bank.®



February 2005

Dear Theatre-goer,

Welcome to our first production of the year 2005! As I write this letter, the Wheelock hills are alive with the sound of snow plows. We are delighted to introduce a new generation to the musical that took Broadway by storm in 1959, winning six Tony Awards including Best Musical of the Season, and extended its hold on the American imagination when it hit movie theatres in 1965. The last musical Rodgers and Hammerstein wrote together and the most popular, it has earned a rightful place in the international musical canon - and in our hearts.

Critics found *The Sound of Music*, "a glowing and radiant production that lit up the theatre like a sudden burst of sunshine; whose charm and sweetness suffused the hearts of audiences with warmth and well-being; and which had about it more than just a passing touch of theatrical fireworks." We're thrilled to light up our theatre with this production of *The Sound of Music* and hope that seeing it will bring a burst of sunshine into your life.

Until we meet again at the next WFT production - *The Beanstalk, the Giant, and Jack*, WFT's founders' take on the classic tale - so long . . . farewell . . . auf wiedersehen . . . goodbye!

Sincerely yours,

*Susan Kosoff*  
Susan Kosoff, *Producer*



## Boston Lyric OPERA New England

### Family Day at the Opera

*Don't miss these very special performances of Mozart's*



Music by Wolfgang Amadeus Mozart  
Libretto by Emanuel Schikaneder

- Performed in English
- Fully staged with sets, costumes and lights
- One-hour performances for young audiences

**Sunday, May 1, 2005**

Performance Times: 12:30 pm and 2:30 pm

John Hancock Hall  
180 Berkeley Street, Boston

Tickets: \$15 Adults, \$10 Children  
Call (617) 542-6772

Benefit Luncheon & Activities for Families  
at 12:30 pm, call (617) 542-4912 ext. 229

School Performances through New England this spring!  
Schedule and information: [www.blo.org](http://www.blo.org)  
[education@blo.org](mailto:education@blo.org), or (617) 542-4912 ext. 239

WFT is supported in part by grants from the Actors' Equity Foundation; Bank of America; The Massachusetts Cultural Council, The Peabody Foundation; Wheelock College; VSA arts of Massachusetts; and the Yawkey Foundation. Wheelock Family Theatre is a participant in the New Generations Program, funded by Doris Duke Charitable Foundation/The Andrew W. Mellon Foundation and administered by Theatre Communications Group, the national organization for the American theatre.

The Wheelock Family Theatre is dependent on performance income and contributions. Your support is needed to sustain the Theatre. Contributions are tax deductible to the extent allowable by law and may be sent to the Wheelock Family Theatre, 200 The Riverway, Boston, MA 02215-4176.





Toys for children  
of all ages



729 Centre Street • Jamaica Plain • 617 522 7800

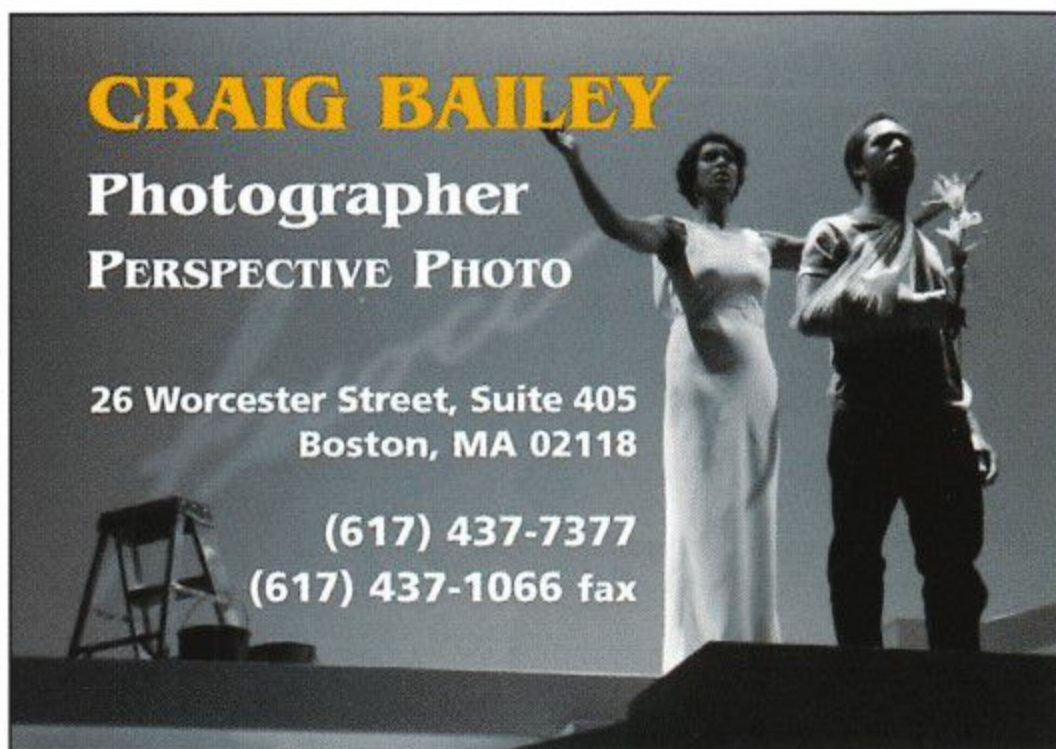
**J.P. LICKS**  
*Homemade Ice Cream Cafe*

**Stop by  
after the  
show!** 



Newton Centre • 46 Langley Rd.  
Brookline • 311 Harvard St.  
Jamaica Plain • 659 Centre St.  
Boston • 352 Newbury St.  
West Roxbury • 661 VFW Parkway  
Arlington • 451 Mass. Ave.  
Somerville • 4A College Ave., Davis Sq.  
One Brigham Circle - Spring of 2005

**CRAIG BAILEY**  
Photographer  
PERSPECTIVE PHOTO



26 Worcester Street, Suite 405  
Boston, MA 02118

(617) 437-7377  
(617) 437-1066 fax

## Who's Who at WFT

**Laurie Aldous** (*Production Stage Manager*) is happy to return to WFT for a second season and to be part of this production. She also works at other theatres in the area, including the Nora and the Huntington. Laurie finally got married August 14th last summer on top of Wildcat Mountain in NH.

**Jordan Ashwood** (*Nun, Postulant, u/s Luisa*), an eighth grader at Walsh MS, is thrilled to be back at WFT and performing with such an amazing cast! She began work at WFT in a summer program at the age of seven - and has appeared on this stage in *The Jungle Book*, *Tuck Everlasting*, and *Inherit the Wind*. Thanks to Jane - and love to Mom and Dad!

**Leigh Barrett** (*Mother Abbess*) is happy to be making her WFT debut. She was most recently seen celebrating the holidays as principal soloist for the Portland Symphony Orchestra. Other credits include the Countess in the Lyric's *A Little Night Music*; *Threepenny Opera* (New Rep); and *Jacques Brel* (Gloucester and Boston). Leigh is the 2004 Elliot Norton Award-winner for Outstanding Actress and received an IRNE Award for her work in four musicals last season. Love to the "boys": HB, Nick, and Matty.

**Chris Brucato** (*Nazi, u/s Max*) is a junior at Wheelock College and thrilled to be making his WFT debut! Theatrical credits include *The Music Man*, *Fiddler on the Roof*, *Oliver!*, *Jesus Christ Superstar*, *The Secret Garden*, *Little Shop of Horrors*, and *Romeo and Juliet*. He dedicates his performance to his friends and family.

**Nicholas Carter** (*Nazi, u/s Rolf*), last seen as Howard in *Inherit the Wind*, has also appeared here in *Pippi Longstocking*, *The Hobbit*, *The Prince and the Pauper*, and *Story Troupers*. He is a member of the young men's chorus of Youth pro Musica and a ninth grader at Catholic Memorial. Special thanks to all at WFT and to family and friends for their support.

**Christopher Chew** (*von Trapp*) is honored to be working for the first time at WFT. His most recent credits include *Johnny Guitar* at SpeakEasy and *A Little Night Music* at the Lyric. Chris has also performed locally in *Wild Party* (SpeakEasy); *Sunday in*

(continued on page 5)

Sodexo Dining Services at Wheelock College  
proudly support and congratulate the  
**Wheelock Family Theatre**  
for 24 years of entertaining all of our families.



**Sodexo**



## WHO'S WHO (continued from page 4)

*the Park with George, Sideshow, The Spitfire Grill, and It's All True* (Lyric); *Lizzie Borden, A Christmas Carol, The Girl in the Frame, and Pete N. Keely* (Stoneham); and *Man of La Mancha* and *Barefoot in the Park* (Worcester Foothills). He is co-artistic director of the Village Theatre Project, a new professional ensemble theatre. He received his BFA from Carnegie Mellon and his MA in teaching from Fitchburg State. Chris is most grateful for the love and support of his wife, Nancy, and their two children.

**Kiersten Cormack** (*Nun, Postulant, u/s Liesl*), appearing in her third WFT production, enjoys Girl Scouts, flute, piano, jazz dance, and speaking French. Thanks to her family for their encouragement. She hopes to be in many more shows to come!

**Misha Cairo Derissaint** (*ASL Interpreter*) first got involved in theatre in middle school in the production of *Bird of a Different Feather* directed by Janis Cole and Jody Steiner. She went on to perform with Roadsign and was involved in the first all-deaf production of *The Vagina Monologues*. She appeared in *Hey Sistah, Welcome Home* with deaf poet Ayisha Knight. She is studying theatre arts at U Mass/Boston. Thanks to her family and friends for all their support.

**Andrea Doane** (*Audio-Describer*) has taught and choreographed for WFT since its debut in 1981. She audio-describes regularly here and at the Huntington and the Wang. Andrea teaches first grade at the Devotion School in Brookline.

**Katherine Doherty** (*Gretl*) is a fifth grader at Chickering Elementary. She most recently appeared as Mary Lennox in *The Secret Garden* with the Savoyard Light Opera. Other credits include a staged reading of *The Children's Hour* (Helen, at the Shubert), *The Sound of Music* (Gretl), *Meet Me in St. Louis* (Tootie Smith), and *Godspell* and *Bye Bye Birdie*. When not rehearsing, Katherine enjoys horseback riding, soccer, and dance.

**Sarah Dunn** (*Nun, u/s Maria*), a native of Omaha, recently finished her Master's in Music at Longy. Past credits include *Godspell, Guys and Dolls, Into the Woods* (Cinderella), *On the Verge* (Alex), and *Racine's Phaedra* (title role). A student of Emily Romney, Sarah is excited to be making her WFT debut.

**Jonathan Goldberg** (*Musical Director*) celebrates ten years at WFT, starting with *Cinderella* in 1995. Recent credits include *A Little Night Music* (Lyric), *Seussical* (Boston Children's), and *Forever Plaid* (Stuart Street). Jon is proud to have been associated with three Elliot Norton Award-winning productions for Best Musical - *Assassins* and *Sunday in the Park with George* (Lyric) and *Pacific Overtures* (North Shore). He was the musical director for the Boston company of *Nunsense* for three years. Jon also enjoys vocal arranging - his a cappella version of the "Star-Spangled Banner" was sung by his *Forever Plaid* cast last summer before a Red Sox game at Fenway Park.

(continued on page 6)

**BEST OF  
BOSTON  
2004**  
Awarded by Boston magazine

# Henry Bear's Park



## For toys and books:

685 Mass Avenue  
Arlington, MA 02476  
781-646-9400

19 Harvard Street  
Brookline, MA  
617-264-2422

361 Huron Avenue  
Cambridge, MA  
617-547-8424

[www.henrybear.com](http://www.henrybear.com)

**Samet &  
Company PC**

*Certified Public Accountants  
& Business Advisors*

Members of the Massachusetts Society of CPAs  
Members of the American Institute of CPAs

**Norman P. Posner, CPA, Partner**

Tel: (617) 731-1222

Fax: (617) 734-8052

Email: [normanposner@samet-cpa.com](mailto:normanposner@samet-cpa.com)

1330 Boylston Street, Chestnut Hill, MA 02467 • e-mail: <http://www.samet-cpa.com>



*Best wishes and  
continued success  
from*

**Lillian Gonzalez, CPA, MST, CSEP**

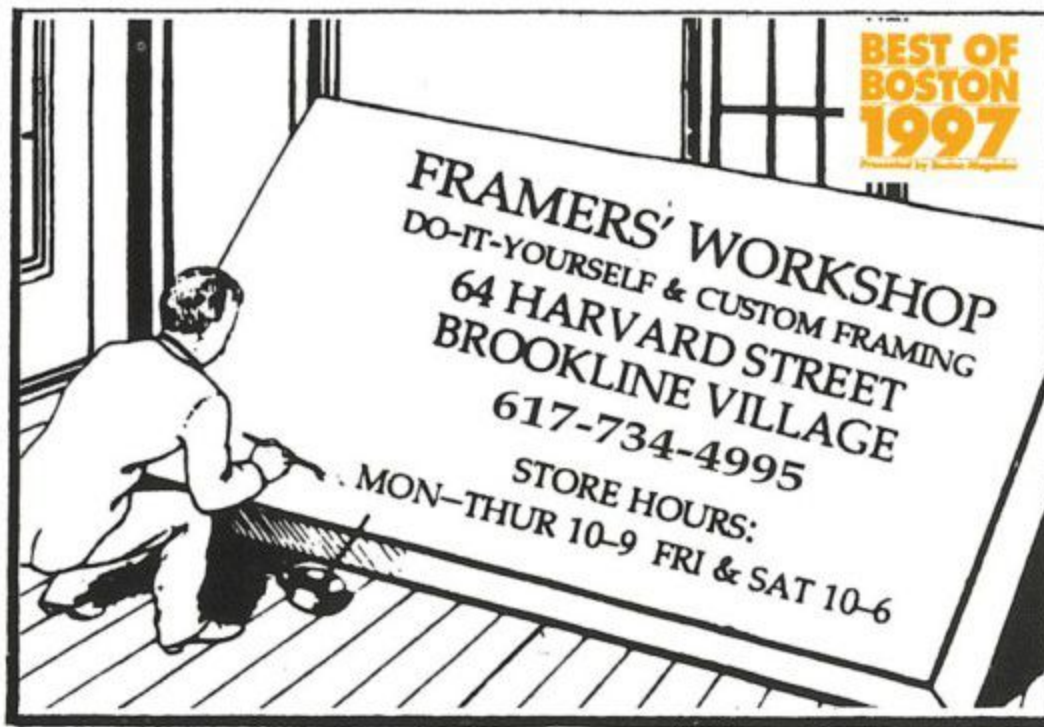
**Terry Creeden, CPA**

**Sandberg, Gonzalez & Creeden, P.C.**  
Certified Public Accountants

**ACCOUNTING, AUDITING, TAXES,  
FINANCIAL AND ESTATE PLANNING**

331 Page Street  
Stoughton, MA 02072  
(781) 344-0850  
FAX (781) 344-6960  
www.sgc-cpa.com

**S, G & C**



**The Children's Book Shop**  
237 Washington St. • Brookline  
617-734-7323

WHO'S WHO (continued from page 5)

**Samantha Goober** (*Brigitta*) recently represented North Shore Music Theatre in *Aladdin, Jr.* and *Cinderella, Jr.* at the Broadway Junior Theatre Festival in Atlanta. A member of SAG, Samantha has appeared in a number of commercials. She has been dancing for ten years and participates in regional competitions in solo, duet, and group categories. Thanks to Jane and Jonathan for this opportunity and to her family for their support.

**Ariel Harrist** (*Louisa*) is a freshman at Newton North. She likes taking lessons in dance, piano, and voice. Ariel enjoyed last summer's experience at Stagedoor Manor, where she appeared in a production of *Hair*. The youngest of four children, she has a boxer named Spock and two cats, Jack and Lily.

**Janie E. Howland** (*Set Designer*) is pleased to return to WFT after designing *Inherit the Wind* last season. Recent designs include *Glass Menagerie* at the Lyric and *Approaching Moomtaj* at the New Rep. Other venues include North Shore, Merrimack Rep, NJ Shakespeare Festival, the Huntington's Studio 210, Opera Boston, the Publick, SpeakEasy, Boston Conservatory, NE Conservatory, 57 Theatre, and the Emerson Majestic. She was a founding member of CYCO SCENIC and is a current member of USA local 829. Janie received her MFA from Brandeis University. In 1997 she received the Elliot Norton Award for Outstanding Design.

**Rachel Judelson** (*ASL Interpreter*) is excited to be making her first appearance interpreting on stage at WFT. She has previously been a member of the Deafblind interpreting teams for both *Inherit the Wind* and *Snow White*. Rachel interpreted *Last Rites* at the BCA and *A Piece of My Heart* at Regis College. She'd like to thank her best friend for everything.

**David Kaim** (*Friedrich*) has been seen here in *Ramona Quimby* (Whopperburger Boy), *Snow White* (Cat), and *The Phantom Tollbooth*. Other credits include *Antigone* (the Nora), *The Orphan Queen* (Temple Ohabei Shalom), and *Daedalus* in *Daedalus and Icarus* (Driscoll School). David was born in Asuncion, Paraguay.

**Mariko Kanto** (*Nun, Frau Zeller, u/s Sister Margareta*) was last seen here as that lovable dwarf Squeaky in *Snow White*. Other recent credits include Leeann in *A Piece of My Heart* and Peggy in *The Women*. Mariko sings with Boston Coro di Camera. This performance is dedicated to Aki, who loves the song "Do-Re-Mi."

**Amanda Kline** (*Nun*) is delighted to be back at WFT. Previous stage credits include *The Phantom Tollbooth*, *42nd Street*, *Cinderella*, and *Once Upon a Mattress*. Thanks to her family, teachers, and friends for their endless support and advice.

(continued on page 7)



WHO'S WHO (continued from page 6)

**Lisa Korak** (*Mother Abbess, u/s Elsa*) is always thrilled to be on the WFT stage. Other credits here include *The Phantom Tollbooth* and *Hello, Dolly!* You may also have seen her at SpeakEasy as Ron/Maggie in the award-winning *BatBoy: The Musical*, as Sue in *Back to Bacharach*, or as Madelaine True in *The Wild Party*. Lisa is a theatre educator here at WFT and at several other local schools and theatres. She dedicates this performance to her family for always helping her to climb every mountain and follow her dreams.

**Jacob Liberman** (*Rolf*), last seen here as Howie in *Ramona Quimby*, is thrilled to be in his eighth WFT production. Recent roles include Jeff in *Kimberly Akimbo* (Boston Theatre Works) and Jack in *Into the Woods* (Wellesley Players). Other WFT credits include *The Phantom Tollbooth*, *Pippi Longstocking*, *Will Rogers Follies*, *Tuck Everlasting*, and *Hello, Dolly!* Jacob spends his summers singing and dancing with *Our Time Cabaret* at Stagedoor Manor. Thanks to Jane, Jonathan, and Laurel. Love/thanks to Mom, Dad, Katie, and Mimi.

**Aaron Malgeri** (*ASL Interpreter*) returns to WFT for his third show; last season he interpreted *Inherit the Wind* and (with Rachel Judelson) interpreted *Snow White* for a Deafblind audience member. Aaron has also interpreted several rock concerts including Aerosmith, Crosby Stills & Nash, and the Allman Brothers Band. A part-time freelance interpreter, he also works for the Commission for the Deaf and Hard of Hearing. To his best friend: "I love you."

**Paul McCallion** (*Kurt*) is a sixth grader at the Park School happy to be back at WFT. Recent credits include *The Phantom Tollbooth* at WFT (Young King Azaz) and *Winter's Tale* directed by Tina Packer at Brandeis. A member of the children's chorus at the NE Conservatory, Paul also enjoys wrestling, tennis, piano, and reading. He dedicates his performance to Matylida for her constant support.

**Jaime Montesano** (*Nun, Frau Elberfeld, u/s Sister Berthe*) is pleased to return to WFT. A certified dance teacher, Jaime has recently choreographed *The Adventures of Tom Sawyer* and *Oliver!* (Arlington Children's Theatre). She created the drama curriculum at the Boston Collegiate Charter School, where she currently teaches sixth grade drama. Thanks to friends and family for supporting her hectic schedule and addiction to theatre!

**W. Yvonne Murphy** (*Nun*) began her career with New African Company in *The Colored Museum* and with WFT in *Winnie-the-Pooh*. Recent WFT credits include *Pippi Longstocking* (IRNE nomination) and *Snow White*. Yvonne has also toured schools with ShakespeareNOW! and is currently performing with KidStage at the Children's Museum. She was last seen in *Company One's Spell #7*.

(continued on page 11)

## Babysitters and Nannies



617-739-KIDS

www.parentsinapinch.com



Providing both buyers and sellers with the highest quality professional real estate brokerage services available.

Chobee  
Hoy  
associates



18 Harvard Street  
Brookline, Massachusetts  
02445

617 739 0067

## FamiliesFirst


Parenting Programs

Workshops, Consultations,  
& Professional Development  
For parents and professionals

www.families-first.org (617) 868-7687 x.11



Proud supporters of  
Wheelock Family Theatre

gourmetcaterers.com  Always in good company



# The Sound of Music

Music by Richard Rodgers    Lyrics by Oscar Hammerstein II

Book by Howard Lindsay and Russel Crouse • Suggested by "The Story of the Trapp Family Singers"

DIRECTOR

**Jane Staab**

MUSICAL DIRECTOR

**Jonathan Goldberg**

SET DESIGNER

**Janie E. Howland**

CHOREOGRAPHER

**Laurel Stachowicz**

LIGHTING DESIGNER

**Nicole Pearce**

COSTUME DESIGNER

**Marian Piro**

SOUND DESIGNER

**Matthew Otto**

PRODUCTION STAGE MANAGER

**Laurie Aldous\***

ASL INTERPRETERS

**Misha Cairo Derissaint,  
Rachel Judelson, Aaron Malgeri**

AUDIO-DESCRIBER

**Andrea Doane**

## THE CAST

Maria Rainer	<b>Angela Williams*</b>
The Mother Abbess	<b>Leigh Barrett*, Lisa Korak</b>
Sister Berthe	<b>Ellen Peterson</b>
Sister Margaretta	<b>Gamalia Pharms*</b>
Sister Sophia	<b>Vanessa J. Schukis*</b>
Captain Georg von Trapp	<b>Christopher Chew*</b>
Franz	<b>Harold S. Withee</b>
Frau Schmidt	<b>Liz Robbins</b>
Liesl	<b>Andrea C. Ross</b>
Friedrich	<b>David Kaim</b>
Louisa	<b>Ariel Harrist</b>
Kurt	<b>Paul McCallion</b>
Brigitta	<b>Samantha Goober</b>
Marta	<b>Alexandra Waye</b>
Gretl	<b>Katherine Doherty</b>
Rolf Gruber	<b>Jacob Liberman</b>
Elsa Schraeder	<b>Eileen Nugent*</b>
Max Detweiler	<b>Brian Richard Robinson*</b>
Herr Zeller	<b>Samuel Young</b>
Baron Elberfeld	<b>Peyton Pugmire</b>
Frau Elberfeld	<b>Jaime Montesano</b>
Admiral von Schreiber	<b>Robert G. Prescod</b>

**NUNS:** Jordan Ashwood, Kiersten Cormack, Sarah Dunn, Mariko Kanto, Amanda Kline, Jaime Montesano, W. Yvonne Murphy, Megan Lynn Otteson, Megan Savage, Jane Staab\*, Jaime Steinbach, Jennifer Tucker

**NAZIS:** Chris Brucato, Nicholas Carter, Peyton Pugmire

**Understudies:** Jordan Ashwood, Chris Brucato, Nicholas Carter, Kiersten Cormack, Sarah Dunn, Mariko Kanto, Lisa Korak, Jaime Montesano, Peyton Pugmire, Jaime Steinbach

THE SOUND OF MUSIC is presented through special arrangement with

The Rodgers & Hammerstein Theatre Library, 1065 Avenue of the Americas, Suite 2400, New York, NY 10018 [www.rnh.com](http://www.rnh.com)

WFT's wireless amplification system was made possible by a generous grant from the Cabot Family Charitable Trust.

Lighting for the Little Theatre was made possible by the generous support of Suzanne Newton.

Costumes for this production were created with the support of Suzanne Weinstein in honor of Frederic Weinstein.

There will be one 15-minute intermission between the acts. Ask the House Manager for individual sound enhancement devices. The taking of photographs and use of recording devices is strictly forbidden.

Please turn off cell phones and beepers. Please, no eating or drinking in the theatre.



Wheelock Family Theatre is a member of StageSource, the Alliance of Theatre Artists and Producers, and of the Theatre Artists' Marketing Alliance.

\*Member of Actors' Equity Association, the Union of Professional Actors and Stage Managers in the United States. The Wheelock Family Theatre is operating under the terms of a Developing Theatre's Program of Actors' Equity Association. The contract used is a Letter of Agreement.



**ORCHESTRA**

Keyboards/Conductor: Jonathan Goldberg  
 Violin: Peter Hughes                      Cello: Catherine Stephan  
 Reeds: Louis Toth, Ray Taranto                      Horn: Ami Fields

**MUSICAL PROGRAM**

**ACT I**

**Preludium** ..... The Nuns of the Nonnberg Abbey  
**The Sound of Music** ..... Maria  
**Maria** ..... Sisters Berthe, Sophia, Margareta, and Mother Abbess  
**My Favorite Things** ..... Maria and Mother Abbess  
**Reprise: My Favorite Things** ..... Maria  
**Do-Re-Mi** ..... Maria and the von Trapp Children  
**Sixteen Going on Seventeen** ..... Rolf and Liesl  
**The Lonely Goatherd** ..... Maria and the Children  
**Reprise: The Lonely Goatherd** ..... Gretl  
**How Can Love Survive?** ..... Max and Elsa  
**Reprise: The Sound of Music** ..... The Children and Captain von Trapp  
**So Long, Farewell** ..... The Children  
**Morning Hymn** ..... The Nuns  
**Climb Ev'ry Mountain** ..... Mother Abbess

**ACT II**

**Reprise: My Favorite Things** ..... The Children and Maria  
**No Way to Stop It** ..... Elsa, Max, and Captain von Trapp  
**An Ordinary Couple** ..... Maria and Captain von Trapp  
**Gadeamus Domino** ..... The Nuns  
**Reprise: Maria** ..... The Nuns  
**Confitemini Domino** ..... The Nuns  
**Reprise: Sixteen Going on Seventeen** ..... Maria and Liesl  
**Reprise: Do-Re-Mi** ..... Maria, Captain von Trapp, and the Children  
**Edelweiss** ..... Captain von Trapp, Maria, and the Children  
**Reprise: So Long, Farewell** ..... Maria, the Children, and Captain von Trapp  
**Finale Ultimo** ..... The Company

Join us after the Show for  
 Cappuccino, Espresso & Latte

Desserts include

Pumpkin Cheese Cake,  
 Chocolate Fondant Cake,  
 Grilled Pineapple Crepes  
 & Deep Dish Apple Pie

Full Bar & Microbrews Available

food served mon-sat  
 till midnight  
 drinks till 1 am



sun food till 11 pm  
 drinks till midnight.

**LONGWOOD**  
**GRILLE + BAR**

Inn at Longwood  
 342 Longwood Avenue  
 Boston, MA 02115  
 617-731-4700

Planning a Party?  
 Call our Director of  
 Catering Today!



## Wheelock Family Theatre

### STAFF

Producer	Susan Kosoff
General Manager	Jane Staab
Education Program Director	John Bay
Publicity and Marketing Director	Charles G. Baldwin
Assistant to the Producer/Grantswriter	Kay Arden Elliott
Access Coordinator	Jody Steiner
Box Office Manager	Cheryl Raistrick
Technical Director/Stage Manager	Rich Archer*
Assistant Technical Director/Props	Matthew Lazure
Costume Coordinator	Lisa Simpson
Assistant to the Director	Beth Lebowitz
Production Assistant	Jennifer Provoost
ASL Consultant	Mikey Krajnak
Scenic Carpenters	Brian Masters, Andrew Norton, Jesse Washburn
Scenic Painter	Lauren Drake
Master Electrician	Henry Drummond
Electricians	Liz Dean, Rick Frank
Sound	Dan O'Brien
Captioning	Lori Marois
Concessions	Nycholle Eckert, Kenny Maura

### ADVISORY BOARD

Jeff Coburn and Lynne Rosansky, Co-Chairs; Carole Charnow, Edward F. Coakley, Scott Edmiston, Andrea Genser, Lillian Gonzalez, Alicia Gordon, Charles B. Gordon, Robin Mount, Stanley A. Rumbaugh, Michelle Seligson, Candelaria N. Silva, James Spencer

### DIRECTOR'S CIRCLE

Judy Parks Anderson, Steve Aveson, Louis B. Casagrande, Peggy Charren, Eleanor Chin, Marian L. Heard, Pat Jehlen, Sara Lawrence-Lightfoot, Barbara Cole Lee, Frances Litman, Gordon L. Marshall, Sarah-Ann Shaw, Kate Taylor, Charles E. Walker, Jr., Liz Walker, Valora Washington, John B. Welch

### FRIENDS OF THE FAMILY THEATRE

Robin Mount, Pat Maye-Wilson, Tricia Norton, *Co-Chairs*; Jory Agate-Mays, Jackie Alexander, Janice Allen, Beth Alperin, Joan & Leroy Ashwood, Jane Bache, Kathleen Kirk-Bishop, Pat & Michael Blank, Kathy Buckley, Sue Cohen, Pam Dempsey, Joanne Driscoll, Wendy Drobnyk, Joyce & Larry Eldridge, Jane Epstein, Bonnie Faith-Smith, Donna Feinberg, Karin Froom, Keziah Furth, Eileen Gallagher, Carol Izen, Robert Kaim, Debby Keefe, Joni Liberman, Joanne Nelson, Evelyn Perkins, Donna Reulbach, Sharon Rich, Judi Rizley, Donna Robinson, Janet Rosen, Paula Ross, Ann Sorvari

### CREWS

Tammy Myers (crew chief); Nicole Alba, Jacy Armenti, Meghan Diamond, Jessica Gabrielson, Sarah Gardiner, Jenn Gerber, Kathleen Hunter, Beth Lebowitz, Dan O'Brien, Jennifer Provoost, Brian Schechter, Lisa Simpson, Jesse Washburn

### VOLUNTEERS

Sella Abalian; Amy Brakeman; Laura Brody; Deb Chaisson-Boucher; Judi Donnelly; Dorit Goldhaber; Donna and Emma Feinberg; Carol Izen; Dhonyale Jones; Winona Mobley; C. L. Monroe; Joanne and Don Nelson; Cindy and Paul Rodgers-Dryfoos, Paula Ross; Jan Uehlein

### FIRST NIGHT BRIGADE

Leroy, Joan, and Jordan Ashwood; Sandra Bates; Clydia and Sophie Davenport; Misha Derissaint; Dhonyale and Cheyenne Jones; Elbert Joseph; David Kaim; Rebecca Kaim; Emily Kosoff; Matthew, Dory, and Chris Nemitz; Cloyd Osborne; Megan Otteson; Gamalia Pharms; Jennifer Provoost; Meghan Savage; Lisa Simpson; Kayloni Williams

### WORK/STUDY STUDENTS AND INTERNS

Nicole Alba, Jacy Armenti, Chris Brucato, Alicia Davis, Meghan Diamond, Sarah Gardiner, Nina Giarrusso, Courtney Griffin; Iris Harrington-Woodard, Lizzie Hutchinson, Beth Lebowitz, Cassandra Pasley, Shannon Pittman, Jennifer Provoost, Cheryl Quinones, Brian Schechter

### SPECIAL THANKS

Andy Aldous; Jeff Dow; Kevin Greeley; Harwich Junior Theatre; Andrea Healy; Tim Healy; Manny Heckley, Susan Mackey, Don Simpson, and members of the Wheelock College Facilities staff; Kris Holmes; Huntington Theatre prop shop; Alice and Leonard Lazure; Doug Robinson; Ann Sorvari for the study guide; Becky Thompson; Chip Towle, Sandy Tubbs, and Nancy Johnson; the Office of the President and members of the Wheelock College community who have made this production possible.

*We wish to thank all the people who have joined with us since the program went to press.*



WHO's WHO (continued from page 7)

**Eileen Nugent** (*Elsa*) is happy to be returning to WFT, where she has appeared as Betty Blake in *Will Rogers Follies* and as Tzeitel in *Fiddler on the Roof*. She has performed regionally with the Lyric, SpeakEasy, Wellfleet Harbor, Publick, and Boston Theatre Works, where she appeared in the Elliot Norton Award-winning production of *Not About Nightingales*. Eileen has also understudied with the Huntington and can be seen in various commercials and the award-winning film, *Mystic River*.

**Megan Lynn Otteson** (*Nun*), a freshman at Watertown HS, made her debut in *The Music Man* with Watertown Children's Theatre. Other credits include *Our Town* (Professor Willard), *The Wizard of Oz* (Tinman), and various roles in WFT's *The Phantom Tollbooth*. Megan enjoys singing, playing the tenor sax, and listening to music. Love to her best friends, family, and Moonstar the cat.

**Nicole Pearce** (*Lighting Designer*) has designed, for theatre, *Sakharam Binder* (Play Co.); *99 histories* (Cherry Lane); *Mémoire* (LAByrinth); *An Unseen Energy Swallows Space* (The Kitchen); and *Waiting For Godot* and *Mermaid* (NYC Fringe). Dance credits include *All Fours* and *Rock of Ages* with Mark Morris; *Carmina Burana* (Ballet Theatre of MD); *Swan Lake* and *The Little Mermaid* (Ballet Memphis); and, with choreographer Alexandre Proia, *Hold the Line* (Symphony Space). Nicole directed and premiered a new production based on poetry honoring nurses entitled *Intensive Care*.

**Ellen Peterson** (*Sister Berthe*), last seen here as Mrs. Blair in *Inherit the Wind*, is delighted to return to WFT. Other WFT appearances include Miss Stacy in *Anne of Green Gables* and *Nightingale* in *Once Upon a Mattress*. Ellen has performed in *A Christmas Carol*, *The Who's Tommy*, and *Lizzie Borden: The Musical* at Stoneham. Thanks to NCC for making it all possible.

**Gamalia Pharms** (*Sister Margaretta*) is overjoyed to be a part of the first musical she became obsessed with as a child! Last seen at WFT in *The Phantom Tollbooth*, she has also appeared in *The Trumpet of the Swan*, *Lilly's Purple Plastic Purse*, *The Hobbit*, *Cinderella*, *Hello, Dolly!*, *Godspell*, and many productions of *Ain't Misbehavin'*, including one in Aruba and one in Maui. Gamalia narrates *The Valentine Bears* for Clarion Books on tape. She has a BFA in Musical Theatre from Boston Conservatory.

**Marian Piro** (*Costume Designer*) co-founded Costumes by Illusions in 1986 and designs for theatres nationally and locally. In and about the Boston area, the company has worked with Chiswick Park, the Lyric, North Shore, and WFT. Among the many shows she has designed are *The King and I*, *Lend Me a Tenor*, *As You Like It*, *The Man Who Came to Dinner*, *The Secret Garden*, and *Chicago*.

(continued on page 12)

## NE MOVES MORTGAGE

An Affiliate of Coldwell Banker Residential Brokerage

NE Moves Mortgage, the premier mortgage company affiliated with Coldwell Banker Residential Brokerage, is proud to support the Wheelock Family Theatre.

Mark Grassia & Kevin Greeley, Senior Loan Officers  
617-864-8566 ext. 256



## NEEDHAM CHILDREN'S CENTER, INC.

- INFANT ■ TODDLER ■ PRE-SCHOOL
- PRE-KINDERGARTEN ■ KINDERGARTEN
- AFTERSCHOOL ■ CAMP

858 Great Plain Avenue, Needham, MA 02492  
781-449-4486



## Jewish Community Centers of Greater Boston Preschools

- Nurturing Children
- Embracing Families
- Mentoring Teachers
- Creating a Caring Jewish Community

Quality preschool learning experiences for children ages 1-5 offering full/part day; full/part-week; school/full year flexibility.

Located in:  
ACTON • WAYLAND  
BROOKLINE/BRIGHTON  
NEWTON • STOUGHTON

Call 617-558-6532





Boston's Jewish Community Day School  
בית ספר יהודי-קהילתי, בוסטון



**A child-centered, innovative Jewish day school serving families across a wide spectrum of Jewish beliefs and practices**

K through 8 [www.jcbsboston.org](http://www.jcbsboston.org) 617- 972-1733

## EDGEWATER



### BED & BREAKFAST

"So close to the water  
you'll think you're on a boat."

2 Oxford Street

Fairhaven, Massachusetts 02719

(508) 997-5512

Working Fireplaces

## BOSTON CHILDREN'S OPERA

*See an Opera!*

*Dracula*

performances 3/3 - 3/13

*Perform in an Opera!*

*The Pied Piper* begins 3/28 - call today!

### Summer Opera Arts Program

*Sing! Act! Build Sets! (Grades 2-9)*

June 20 - July 1 • *Sleeping Beauty*

July 18-July 29 • *Hansel and Gretel*

Aug. 1-12 • *King Arthur*

*See a show or sing with us!*



**Come & join the fun! 617-628-0063**



**Boston Trust & Investment  
Management Company**

**Good Luck  
on your  
2004-2005 season!**

40 Court Street, Boston, Massachusetts 02108  
Tel. (617) 726-7250

WHO'S WHO (continued from page 11)

**Robert G. Prescod** (*von Schreiber*) is making his third appearance at WFT, where he was seen previously as Professor Willard (*Our Town*) and as Mr. Bollinger (*Inherit the Wind*). Other area credits include Reverend Sykes in *To Kill a Mockingbird*, Ken in *Rumors*, Toledo in *Ma Rainey's Black Bottom*, and Bill/Realtor in *Spacemaker*. Robert has also participated in numerous readings with the Harvard Players.

**Peyton Pugmire** (*Nazi, Elberfeld, u/s von Trapp*) is currently the drama teacher at Winthrop MS. He received his master's in theatre education from Emerson, where he performed the role of Shakespeare in *The Shakespeare Stealer*. Other credits include *Sweet Charity*, *Dracula*, *Six Degrees of Separation*, and *Forever Plaid* in the international Piccolo Spoleto Arts Festival in Charleston, SC.

**Liz Robbins** (*Frau Schmidt*) is delighted to return to the WFT stage, where she appeared as Mrs. Krebs in *Inherit the Wind*. Regional credits include *Rhinoceros* (Mrs. Boeuf); Theatre Zone's *Winter's Tale* (Paulina); the Devanaughn's *Woman in Black* (Woman); and Stoneham's *A Streetcar Named Desire* (Blanche Dubois). Liz also does film and commercial work. Thanks to Fred for his love, support, and bad jokes.

**Brian Richard Robinson** (*Max*) is enthused to be back at WFT, where he appeared in *The Phantom Tollbooth* (Mathemagician) and *Will Rogers Follies* (Sextet). Other credits include *Strike Up the Band* (Jim Townsend); *Threepenny Opera* (Filch/Ned); *When Pigs Fly* (Brian); *Side Show* (Jake); and *The Gig* (Marshall Wilson); and *The Wild Party* (Oscar D'Armano). In 2004, Brian won an IRNE for his roles in *Side Show* and *When Pigs Fly*. He also sings with the Tanglewood Festival Chorus and does frequent solo work with the BSO and the Pops. A graduate of Tufts University School of Medicine, Brian also works as a physician/scientist in Boston.

**Andrea C. Ross** (*Liesl*), an eighth grader at the Charter School in Franklin, is very excited to be performing with such a fantastic cast! Her stage credits include *Ramona Quimby/Ramona* and *Tuck Everlasting/Winnie Foster* (WFT); *A Little Night Music/Fredrika* (Lyric); *Lizzie Borden/Young Lizzie* (Stoneham); and *Annie/Title Role* (Trinity Rep). Film credits include *A House Divided* (Jodom Pictures).

**Megan Savage** (*Nun*), a junior at the Winsor School, was last on the WFT stage nine years ago as a mouse in *Cinderella* and a spider in *Charlotte's Web*. She is pleased to be playing a character with no additional appendages. Thanks to her parents for driving her home after every performance.

**Vanessa J. Schukis** (*Sister Sophia*) is delighted to be debuting with WFT. She was a Liebeslieder in the Lyric's *A Little Night Music* and Madame Peep in *Oedipus Tex* with Raylynnmor Opera. Last spring, she played Reggie Kassar in NOMTI's *The Woman Upstairs* and appeared in Boston Lyric Opera's *Tosca*

(continued on page 13)



WHO'S WHO (continued from page 12)

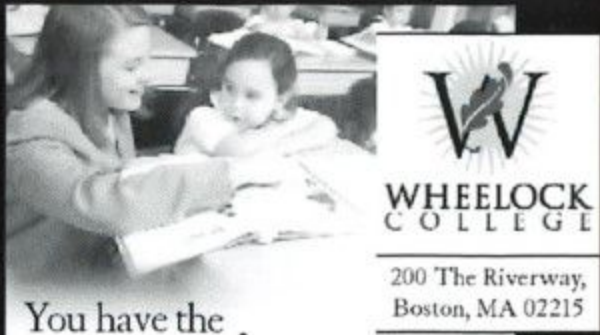
with Maestro Keith Lockhart. She will perform in BLO's upcoming *Eugene Onegin*. Vanessa is the 2002 recipient of the Gold Award and People's Choice Award in the Vera Scammon International Vocal Competition.

**Jane Staab** (*Director*) has directed many musicals at WFT over the years and never ceases to be transported by the power of music and theatre combined. Jane is constantly revitalized by the talented casts and is especially delighted to repeat *The Sound of Music* with such luminaries as Angela, Leigh, Eileen, Andrea, Chris, Brian, Jacob, Gamalia, Vanessa, Ellen, and those fabulous children and ensemble.

**Laurel Stachowicz** (*Choreographer*) returns to WFT, after choreographing *Ramona Quimby*, *Snow White*, *The Phantom Tollbooth*, *Pippi Longstocking*, and *Will Rogers Follies* (for which she won the IRNE award for Best Choreography). Other credits include *Ragtime* and *Chicago* (Foothills) and the east coast premiere of *Aida* (Wachusett), plus works with SpeakEasy and Barrington Stage. Laurel just finished her BFA in dance at Smith. Thank you Jane, Susan, Michael, Molly, Nyssa, and this wonderful cast!

**Jaime Steinbach** (*Nun, u/s Sister Sophia*) is thrilled to be making her WFT debut. Favorite roles include Little Red (*Into the Woods*), Mary (*Merrily We Roll Along*), and Golde (*Fiddler on the Roof*). During the day, Jaime teaches elementary school music.

(continued on page 14)



WHEELOCK COLLEGE  
200 The Riverway,  
Boston, MA 02215


You have the **passion.**  
We'll provide the **path.**

Call our Admissions Office at 617-879-2206 or visit us on-line at [www.wheelock.edu](http://www.wheelock.edu) for more information.

[www.wheelock.edu](http://www.wheelock.edu)

**GRADUATE PROGRAMS**

- Child & Family Studies
- Social Work
- Education
- Arts & Sciences



**Carolle Photography**  
*Photography for the Performing Arts*

headshots • productions • events • CDs • portraits

Kippy Goldfarb  
617.426.9698 [carollephoto@aol.com](mailto:carollephoto@aol.com)


EXPERIENCE THE FUTURE OF CLASSICAL MUSIC TODAY.




April 10, 2005  
8:00 p.m.  
Symphony Hall  
VERDI'S MESSA DA REQUIEM  
with special guests Chorus pro Musica

Tickets: \$30, \$25, \$18 (students, seniors: \$20, \$15)  
Call 617-353-3359 to reserve your seats today!

Greater Boston Youth Symphony Orchestras  
Federico Cortese, Music Director



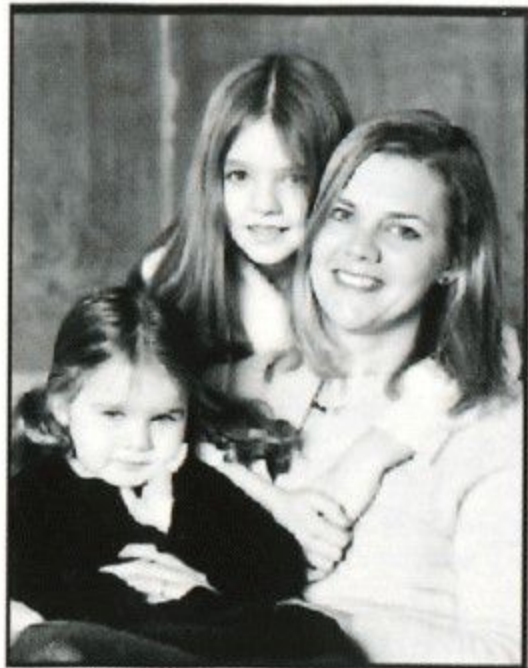
Join the Wheelock Family Theatre and you might win a family vacation for 4 at the Trapp Family Lodge!



**Trapp Family Lodge**

700 Trapp Hill Road, Stowe, Vermont 05672  
800-826-7000 • 802-253-8511  
email: [info@trappfamily.com](mailto:info@trappfamily.com)





Robin Golinski with daughters Victoria Maxfield, 10yrs, and Violet Maxfield, 4yrs.

We are so excited to be a part of the  
Wheelock Family Theatre.  
Have a terrific season!

Victoria

Robin Golinski  
617-648-4473

rgolinski@prumaxfield.com

Robin



Prudential

Maxfield & Company  
Real Estate Services

www.prumaxfield.com

VIOLET



DAVIO'S

75 Arlington St., Boston  
617.357.4810 www.Davios.com

#### WHO'S WHO (continued from page 13)

**Jennifer Tucker** (*Nun*) is a native of Jacksonville, FL. She received her BA in Music from Furman and is currently completing her Master's at NE Conservatory. Other stage credits include *Cabaret*, *Joseph . . . Dreamcoat*, *Once Upon a Mattress*, *Guys and Dolls*, *My Fair Lady*, and *La Calisto*.

**Alexandra Waye** (*Marta*) is glad to return to WFT, where she has been seen in *The Trumpet of the Swan* and *Snow White*. She has been studying at Riverside Theatre Works. A fourth grader at Thacher Montessori, Alex enjoys swimming, soccer, basketball, and crafts. Thanks to her family and friends for their support.

**Angela Williams** (*Maria*) is ecstatic to be back at her favorite theatre after playing the Princess of Reason in last season's *Phantom Tollbooth*. Recent credits include Foothills' East Coast premiere of *Aida* (title role) and Trinity Rep's *A Christmas Carol* (Belle) and *Annie* (Grace Farrell) with the talented Andrea Ross. Other favorite roles include the Narrator in *Joseph . . . Dreamcoat* (Theatre by the Sea) and Sister Mary Hubert in *Nunsense*. Her favorite role is as wife to her loving husband Rev. Jeffery A. Williams, founder and pastor of the Cathedral of Life Christian Assembly in Providence. Angela sends love to her two precious daughters, Joy and Grace, and appreciation to Sue and Jane for giving her the opportunity to realize her life-long dream of telling the remarkable story of Maria von Trapp.

**Harold S. Withee** (*Franz*), was last seen here as Mr. Sillers in *Inherit the Wind*. He has also appeared in national commercials for Dunkin' Donuts and Walgreen's and locally for the state lottery on Channel 5. In the spring Harold can be seen in HBO's production of *Empire Falls*, opposite Philip Seymour Hoffman and Robin Wright Penn, and in the History Channel's presentation on the exploration of North America. He is a member of SAG.

**Samuel Young** (*Zeller*) is making his third WFT appearance, having been seen here previously in *Inherit the Wind* (Davenport) and *The Witch of Blackbird Pond* (William Ashby). He is excited to be working with such a talented cast and crew.

Arthur Blank & Company, Boston



supports the Wheelock Family Theatre

www.arthurblankco.com





BOSTON  
BALLET  
SCHOOL  
2004 | 2005

*Also available in  
Newton and Norwell:  
CHILDREN'S GROUP  
PIANO LESSONS!  
Call studio for details.*

BOSTON STUDIO  
SOUTH END  
(617) 456.6264

METROWEST STUDIO  
NEWTONVILLE  
(617) 456.6263

SOUTH SHORE STUDIO  
NORWELL  
(617) 456.6273

Main Photo by Jonathan Ressler Photography; Small Photos by Rania Matar and Angela Sterling

[www.bostonballet.org](http://www.bostonballet.org)

**Congratulations &  
Continued Success Bringing  
the Best of Children's Literature  
to Life!**



THE BOSTON  
**Parents' Paper**  
617-522-1515





## Encouraging imagination. Applauding innovation.

Those who march to a different drummer share our passion for creativity and out-of-the-box thinking. That's why Bank of America is proud to support Wheelock Family Theatre where the innovative spirit and fresh, new ideas are helping expand all our horizons.

Visit us at [www.bankofamerica.com](http://www.bankofamerica.com).

**Bank of America**



**Higher Standards**



Bank of America, N.A. Member FDIC.  
©2004 Bank of America Corporation.  
ART-43-AD