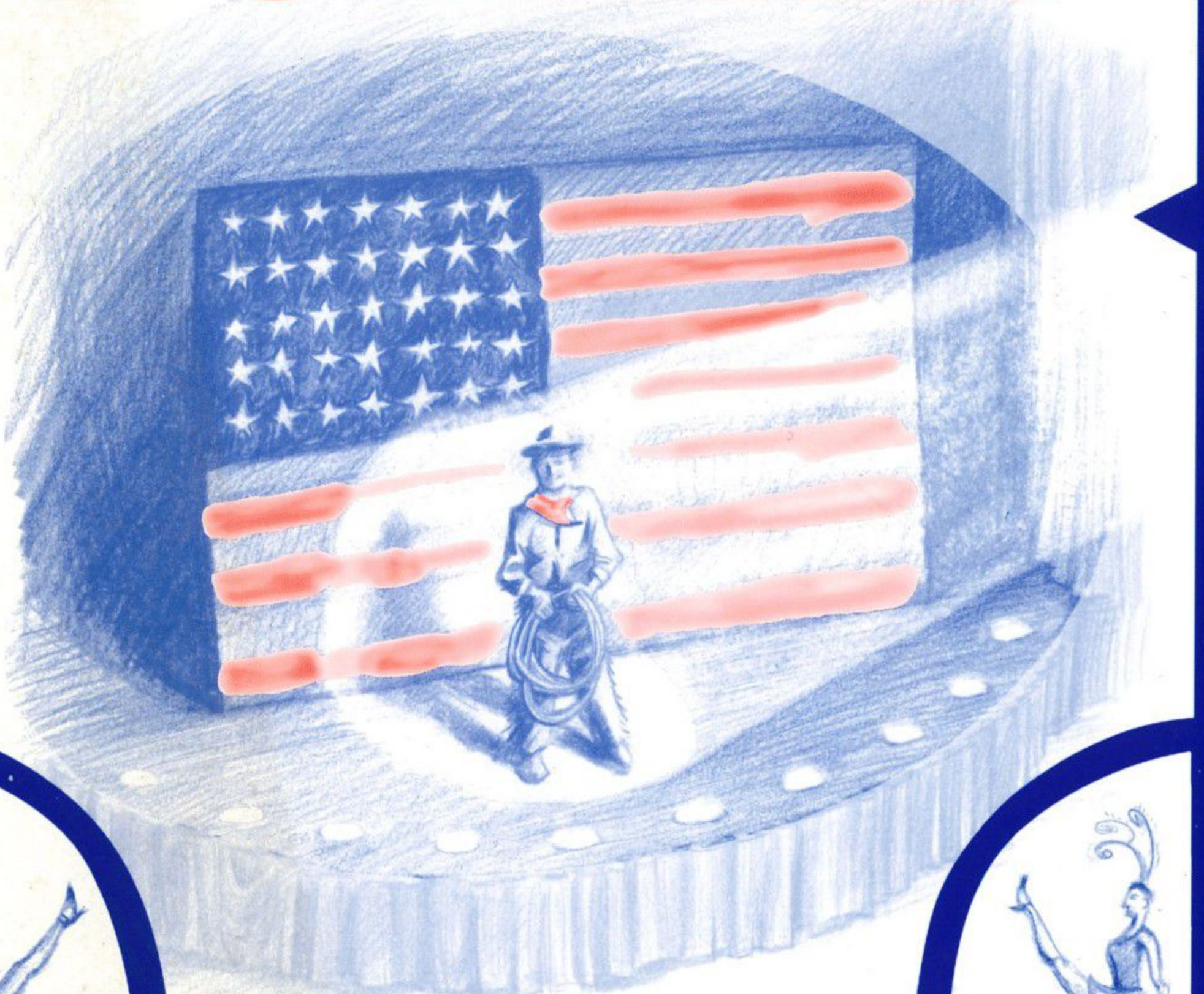




**Wheelock
Family Theatre**
presents



**THE
WILL ROGERS
FOLLIES**



**JANUARY 31 -
FEBRUARY 23**



BOSTON
BALLET
SCHOOL

ONGOING
ENROLLMENT
for 2002
2003



Photo by Rania Matar

CHILDREN'S DIVISION AGES 3-7

Boston Studio
South End
(617) 456.6267

MetroWest Studio
Newtonville
(617) 456.6263

South Shore Studio
Norwell
(617) 456.6273

www.bostonballet.org

***Congratulations &
Continued Success Bringing
the Best of Children's Literature
to Life!***



THE BOSTON
Parents' Paper
617-522-1515

January/February 2003

Dear Theatre-goer,

It is with great pleasure that we welcome you and the new year in with this sparkling celebration of America's very first superstar. As Ann Sorvari writes in our study guide for *The Will Rogers Follies* (available in the lobby):

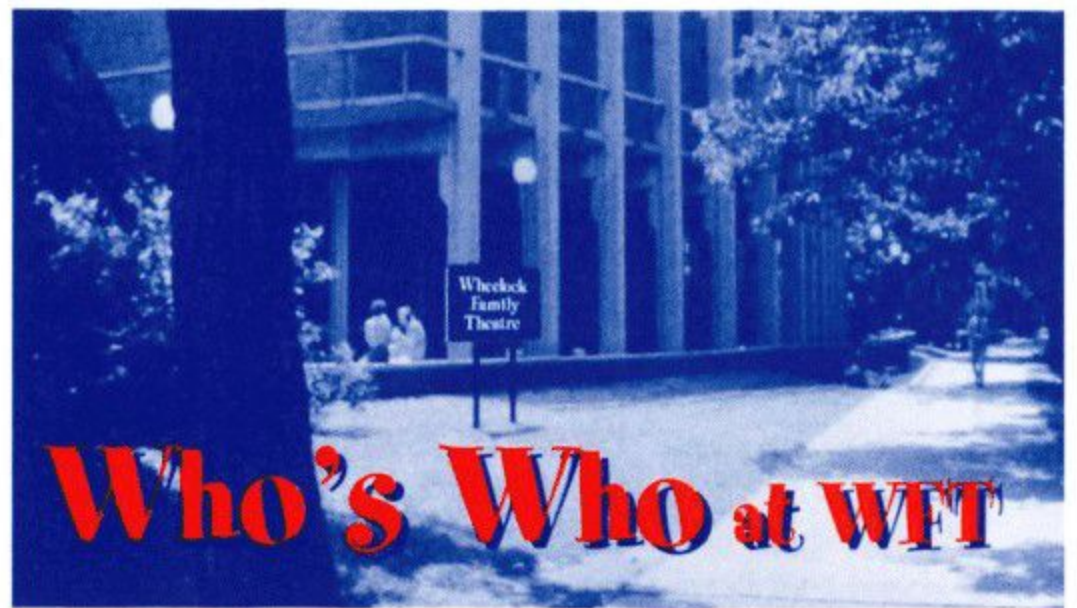
His rise from humble beginnings, his astonishing list of accomplishments, his honesty and wit, and, above all, his optimistic and accepting attitude toward life and all humankind endeared him to audiences of his time. In our time, so darkened with the fear of violence and the escalating hatreds and conflicts around the world, we may welcome, and need, Will Rogers more than ever.

If you enjoy the show - and we hope you do - be sure to tell all your friends and relations to come. Word of mouth is our best publicity.

Sincerely yours,



Susan Kosoff
Producer



Natasha Ashworth (*Chorus*) is proud to make her WFT debut. Recent credits include Frederika Armfeldt in *A Little Night Music* and the Nasty Girl in *Carousel* at North Shore; Young Molly in *Jake's Women*; the independent feature film *Love Don't Come Easy*; and (upcoming) Betty Parris in the Brandeis/New Rep tour of *The Crucible*. Natasha also dances and performs with Joppa Jazz Co. and in Ballet N. E.'s *The Nutcracker*. Many thanks to Jane Staab for this opportunity.

Stefan Barnas (*Set Designer*) is happy to be making his WFT design debut. You might have seen his designs around town at Coyote Theatre, Boston Academy of Music, Suffolk University, Boston Director's Lab, and Emerson Stage. Thanks to Sue and Jane for letting him have this opportunity and to Rich, Matt, Kay, and the whole WFT family for their hard work on this production. Stefan would also like to thank the sun for giving him a reason to get out of bed every morning.

Jeanine Belcastro (*Ziegfeld Girl*) is delighted to return to WFT, having last been seen here in *Hello, Dolly!* Recent credits include *The World Goes 'Round*, and *A Funny Thing . . . Forum*, both at the Quincy Dinner Theatre. She looks forward to touring the area with *The World Goes 'Round* this spring. Jeanine sends love and thanks to Andy and her family for their support and encouragement.

Meaghan Boeing (*Sister*) is excited to be performing with WFT for the first time. Regionally, she has appeared in *As You Like It* (Phoebe) and *Pirates of Penzance* (Daughter) at the Publick, *Sunday in the Park with George* (Celeste #1) at the Lyric Stage, *A Christmas Carol* (Belle) with Stoneham Theatre, and *A Christmas Carol* (Christmas Past) with Worcester Foothills. Meaghan can also be seen on camera and in the concert hall, and she travels to local and national schools with a one-woman show for youth about relationship violence.

(continued on page 4)



Aglío



Without it we would be just another restaurant.

Discover why they say "Sorento's, the most addictive name in Italian cuisine".

Bring this ad and receive 20% off the price of your meal (alcoholic beverages excluded).

Open 'til midnight, enjoy the show.

86 Peterborough Street Boston, MA 02215 • Tel. (617) 424-7070 Fax (617) 424-8699 • offer expires 12/31/03



Prudential Prime Properties

Your hometown REALTOR
with national connections...

Imagine the possibilities.

FULL SERVICE REAL ESTATE

673 Centre Street, Jamaica Plain (617) 524-5431
2 Dartmouth Street (617) 421-1600
Serving Metropolitan Boston

www.pruprimeboston.com

Jewish Community Centers of Greater Boston

- ★ Nurturing Children
- ★ Embracing Families
- ★ Mentoring Teachers
- ★ Creating a Caring Jewish Community

Quality preschool learning experiences for children ages 2-5 offering full-day and part-day; full-week and part-week; school year and full year flexibility



ACTON

JCC Early Childhood Education Center in Acton
(978) 266-9988
Prospect Street off Route 111
Director: Ronit Ben-Shir

BROOKLINE/BRIGHTON

Leventhal-Sidman JCC Preschool at Brookline / Brighton
(617) 278-2950, ext. 221
Sutherland Road at Cleveland Circle
Director: Indira Herscovici

CANTON

Striar JCC Canton Preschool & Full Day Learning Center
(781) 828-3507
Intersection of Routes 128 & 138
Director: Gayle Karp

NEWTON

Gan Yeladim Early Learning Center
(617) 965-1370
Wells Avenue Office Park
Director: Sara Sinai
Leventhal-Sidman JCC Campus Preschool
(617) 558-6420

Route 128, Exit 19B, near Needham town line
Director: Beth Sagan

STOUGHTON

Striar JCC Preschool & Full Day Learning Center
(781) 341-2016, ext. 153
Central Street near Route 24
Director, Preschool: Lisa Aframe, ext. 182
Director, Full Day Learning Center: Mimi Shapiro, ext. 156

WAYLAND

JCC Preschool in Wayland
(508) 358-5331
141 Boston Post Road (Route 20)
Director: Anne Spector

WHO'S WHO (continued from page 3)

Dan Bolton (*Cowboy*) is thrilled to be back at WFT, where he appeared in last season's *Tuck Everlasting*, as well as in *Hello, Dolly!*; *Lilly's Purple Plastic Purse*; *Our Town*; and *Little Women*. Other local credits include *Nuncrackers*, *When Pigs Fly*, *The Heiress*, *Laughter on the 23rd Floor*, and *A Christmas Carol* (Lyric Stage); *A Funny Thing . . . Forum* and *The Fantasticks* (American Stage Festival); *Little Shop of Horrors* and *How the Other Half Loves* (Worcester Foothills); *Jeffrey*, *Chess*, and *Is There Life After High School?* (SpeakEasy); and *Laughter on the 23rd Floor* (Merrimack Rep). A graduate of Boston College, Dan has appeared in 3 national tours and in over 100 commercials and industrial films.

Tom Bourque (*ASL Interpreter*) is a senior theatre major at Boston Arts Academy. He has some hearing loss, but it does not prevent him from interpreting on stage! He is proud to be working on his 2nd show here, having debuted as an interpreter with WFT's *Trumpet of the Swan* last spring. After graduation, Tom will be attending college.

Bikrum Chahal (*James Rogers*), a 6th grader at the Baker School in Chestnut Hill, enjoys taking classes at WFT, playing the violin, singing, cartooning, soccer, basketball, swimming, and Tae Kwon Do. This is his WFT stage debut.

Karen Q. Clark (*Ziegfeld Girl*) is excited to be making her WFT debut. Originally from WI, she holds a master's in Music. She recently performed at Worcester Foothills in *Ragtime* and as Marion Paroo in *The Music Man*. Other area roles include Amnesia in *Nunsense* and Nellie Cohen in *George M!* Love to Jay.

Byron Darden (*Wiley Post, Cowboy*) toured with Ice Capades for 3 seasons as a featured principal skater and now works as a figure skating coach/consultant and choreographer. Featured roles include Richey Walters in *A Chorus Line* (Company Theatre) and the Leading Player in *Pippin* (Pine Manor College). Byron made his WFT debut as Fyedka in *Fiddler on the Roof* and his professional debut at WFT as Prince Dauntless in *Once Upon a Mattress*. He was also seen here as Barnaby Tucker in *Hello, Dolly!* TV credits include Ice Capades with Kirk Cameron and Rita Moreno and the series *Against the Law*. Byron also does commercial, print, and voice-over work.

Scott Evan Davis (*Will Rogers*) recently returned from the West Coast, where he appeared in *Route 66* at the Oregon Cabaret Theatre. Other credits include Miles Tuck in *Tuck Everlasting* at WFT; *The Legend of Tom Dooley* (North Shore); *Moby Dick: An American Opera* (New Rep), *Soap Opera* (a spoof) in NYC, *Tommy* at the Count Basie Theatre, *Oliver* at the Red Oak Music Theatre, and *Camino Real* at the NJ Shakespeare Festival. Scott attended Emerson and finished at the American Musical and Dramatic Academy in NYC, where he currently lives. Next up is Scott's own cabaret show, *Both Sides Now*, at Don't Tell Mama's. Thanks to WFT for this wonderful opportunity.

Laura D. DeGiacomo (*Ziegfeld Girl*) received her BFA in Musical Theater from Emerson. Her credits include a European tour of *Phantom of the Opera* (Jammes), the national tour of *Grease* (understudy Sandy/Patty), and the national tour of *Showboat* (Kim). Regional credits include Belle in *A Christmas Carol*, Rita in *Marty*, Hope in *Anything Goes*, Chava in *Fiddler on the Roof*, Mary Quite Contrary in *Babes in Toyland*, Beth in *Merrily We Roll Along*, and *All My Children*. Thanks to her friends and family for all their love and support - especially her number one fan, her Mom - and very special thanks and love to her fiancé and best friend, Michael.

(continued on page 5)

WHO'S WHO (continued from page 4)

Caroline deLima (*Ziegfeld Girl*) is excited to join WFT! A recent graduate of Indiana Univ., Caroline's favorite credits include Sally Bowles in *Cabaret* (Company Theatre), Miss Mona in *The Best Little Whorehouse in Texas* (Indiana Univ.), Lilly St. Regis in *Annie* (Fiddlehead), and *Putting it Together* (SpeakEasy). She thanks her family and David for their love and superior patience.

Natanjah Driscoll (*Mary Rogers*) has been doing theatre since she was 4 years old. Her WFT debut was in last season's *The Trumpet of the Swan*; she has also been seen locally in *Crazy for You* (Tess), *Mary Poppins* (Bert), and *Oliver!* (Artful Dodger). Look for her in the New Rep's upcoming *No Niggers, No Jews, No Dogs* as Matoka. Natanjah also enjoys singing and composing music; she is a member of the Longy School of Music's Youth Chorale.

Yahanna Faith (*Sister*) is elated to be performing in her 7th WFT production! She last appeared in the role of Tullus Aufidius in Project Shakespeare's *Coriolanus* at the Lyric Stage and sang at the Cambridge Peace Commission's 20th Anniversary Celebration. Yahanna dedicates her performance to the memory of Leslie Jyoti Kiernan.

Robin Fradkin (*Audio-describer*) is excited to be back describing at WFT, where she was originally trained. There's no place like home! Most recently she described *Aida* at the Wang Center and *Man of LaMancha* at Worcester Foothills. Robin counts *Hedda Gabler* at the Huntington and *Fiddler on the Roof* at WFT among her favorite described shows. She is currently an MFA student at Emerson College, studying Creative Writing and teaching Expository and Research Writing to first-years. Robin also tutors for the Learning Lab at Lesley and works part-time at The Clayroom in Brookline.

Devan Fraser (*Sister*) is thrilled to be appearing at WFT. Previous credits include *Anything Goes*; *Bye Bye Birdie*; *The Music Man*; and *No, No, Nanette*, as well as 2 appearances at Carnegie Hall with the Trumbull High School Concert Choir. Devan has 14 years of professional dance and theatre training and voice training under the direction of Beverly Blanchard. She is currently studying child development at Wheelock College and hopes to be a child life specialist.

Jonathan Goldberg (*Musical Director*) joined the Wheelock "family" 8 seasons ago for *Cinderella* and has stayed ever since! Last season he led the music for the WFT revival of *Tuck Everlasting*, providing original new vocal arrangements and orchestrations. Jon was musical director for the Lyric Stage's production of *Sunday in the Park with George*, where he has also led *She Loves Me*, *No Way to Treat a Lady*, and *Assassins*. Other favorites include *Sweeney Todd*, *A Little Night Music*, and *Into the Woods* (Publick), *Bed and Sofa* (Nora), and *Ain't Misbehavin'* in Newburyport. As resident musical director for Boston Children's Theatre, Jon has led productions including *The Secret Garden*, *Big River*, *Honk*, and *Peter Pan*. He will be back at the Lyric Stage this spring for the Boston professional premiere of *Side Show*.

Bree Greig (*Ziegfeld Girl*) is thrilled to be making her WFT debut. A native of PA, she graduated cum laude with a BM from Berklee. Recent credits include Mary Singer in *Stop! Look! Listen!* at American Classics, Luisa in *The Fantasticks* at Ubiquity, and Nadine in *The Wild Party* with SpeakEasy. Bree is also an accomplished flute player.

(continued on page 7)



Jeannette Neill
Children's Dance Program

The Intelligent
Dance Alternative

Ages 3-12
Creative Movement
Tap • Jazz • Ballet

261 Friend Street
by the Fleet Center
Call for a brochure:
(617) 523-1355

J.P. LICKS

Homemade Ice Cream & Frozen Yogurt

Stop by after the show!



Boston • 352 Newbury Street
Brookline • 311 Harvard Street
Jamaica Plain • 659 Centre Street
Newton Centre • 46 Langley Road
West Roxbury • 661 VFW Parkway

Samet & Company PC

Certified Public Accountants
& Business Advisors

Members of the Massachusetts Society of CPAs
Members of the American Institute of CPAs

Norman P. Posner, CPA

Tel: (617) 731-1222

Fax: (617) 734-8052

Email: normanposner@samet-cpa.com

1330 Boylston Street, Chestnut Hill, MA 02167 • e-mail: <http://www.samet-cpa.com>

Join us after the Show for
Cappuccino, Espresso & Latte

Desserts include
Pumpkin Cheese Cake,
Chocolate Fondant Cake,
Grilled Pineapple Crepes
& Deep Dish Apple Pie

Open till
12:30am



Longwood
GRILLE+BAR

Full Bar & Microbrews Available

Inn at Longwood
342 Longwood Avenue
Boston, MA 02115
617-731-4700

Planning a Party?
Call our Director of
Catering Today!

KFC
KFC
KFC
KFC
KFC
KFC
KFC
KFC

Like The Phoenix, rising...we've survived the fire!

kevin fennessy casting, inc.
a full service casting office casting principals, dayplayers, extras, in film, commercials, corporate, industrials and theater

Credits include local casting for such films as:
THE HUMAN STAIN • MONA LISA SMILE • LIFT
WHAT'S THE WORST THAT COULD HAPPEN?
THE PERFECT STORM • ME, MYSELF AND IRENE

Classes and workshops in Acting and the Business of Being a Performer for Adults, Teens, and Kids

Study with working professionals in a comforting, supportive and challenging environment

Now housed in our new conveniently located Cambridge home:
25 Mount Auburn Street, Harvard Square, Cambridge, MA 02138
Phone: 617-547-1447 • Fax: 617-547-1420
Casting: kfcasting@aol.com • Classes: classes@kfcasting.com • www.kfcasting.com

JCDS
The Jewish Community Day School
בית ספר יהודי קהילתי

A dynamic school community serving K through 8

... where innovation meets tradition

www.jcdsboston.org 617-965-5100

HERITAGE FLAG CO., INC

HERITAGE
FLAG

28 Damrell Street
Boston, MA 02127

Local: 617.269.3524
toll free: 1.800.834.3524
fax: 617.269.6002
web: www.heritageflag.com

CUSTOM FLAGS AND BANNERS

Great Food Great Coffee

A winning combination exclusively at rebecca's cafe.

411 BROOKLINE AVENUE, BOSTON MA 617.731.1300

OUR NEXT SHOW:

PIPPI LONGSTOCKING

APRIL 4 - MAY 4

Celebrate Pippi's love of tall tales, ice cream, and colorful friends in this fast-paced adaptation of Astrid Lindgren's modern classic.

WHO'S WHO (continued from page 5)

Andrea T. Healy (*Stage Manager*) is pleased to be back for her 3rd season at WFT. As a child she attended the Harwich Junior Theatre on Cape Cod and eventually worked there as a stage manager, creative drama teacher, and business manager. She has also stage managed at Wellfleet Harbor Actors Theatre and Seacoast Rep. Last summer, Andrea taught drama at the Kaleidoscope creative arts camp in Newton. She has a BA in Education from UMass Amherst.

Matt Lazure (*Assistant Technical Director*) is glad to be joining the WFT family. A graduate of MA College of Art (BFA, Painting major), Matt's set painting and design credits include Provincetown Theatre Company's (PTC) production of David Sedaris's *The Santaland Diaries* and productions by Ryan Landry's Gold Dust Orphans of *Scarrie*, *Madame X*, *What the #%&@'s Up with Baby Jane*, *Rosemary's Baby*, and *Camille*. Performance credits include *Sweet 'n Low Brow*, an original 2-person show at the Unitarian Universalist in Provincetown, *Scarrie*, and two short plays with PTC performed at the Fall 2002 Playwright's Festival.

Jacob Liberman (*Will Rogers, Jr.*) is so happy to be back on the WFT stage! A freshman at the New Jewish High School in Waltham, he was last seen here as the Know-It-All Boy in *Tuck Everlasting*. Other favorite roles include the smallest dancing waiter in *Hello, Dolly!*; Malcolm Andrews in *Anne of Green Gables*; Randolph MacAfee in *Bye Bye Birdie*; and Young Patrick in *Mame*. Jacob is thrilled to be sharing the stage - at last! - with his friend and teacher, Merle Perkins (known in some circles as God), and to be reunited with his mentor, Scott Davis. Love and thanks to Mom, Dad, and Katie, and special thanks to Jane and Jonathan.

Andrea Lyman (*Sister*), a graduate of Boston Conservatory of Music, has performed in Europe and across the US. She sang in the Christmas and Easter shows at Radio City Music Hall and performed in several off-Broadway shows in NYC. Credits include *The King and I* (Tuptim), *Company* (Amy), *Showboat* (Queenie), the Vineyard Playhouse's *Ain't Misbehavin'*, North Shore's *Friendship of the Sea*, Boston's Playwrights' *Walker*; and WFT's *Tuck Everlasting* (Mrs. Foster). Andrea has appeared in the films *Last Action Hero*, *Who's the Man*, and *So Fine* and on TV in *All My Children*, *Guiding Light*, *One Life to Live*, and *Law and Order*. She has also been performing duo and one-woman shows locally. Andrea is thrilled to be back again at WFT.

Sharon M. Mendes (*ASL Interpreter*) is the lead interpreter and coordinator of interpreter services for Boston Arts Academy. She has been interpreting for a number of years in liturgical, educational, and theatrical settings. She is a proud member of The Method, through which she and others receive extensive conference training and increased mentoring skills. Sharon has interpreted First Night Boston, Access to Theatre, and several WFT productions.

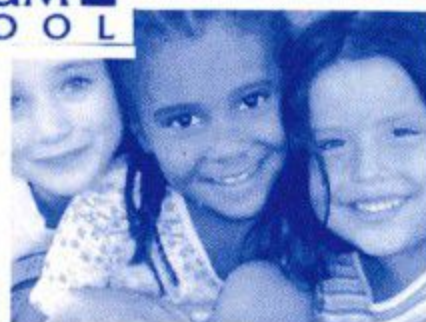
Jaime Montesano (*Ziegfeld Girl*) is a graduate of Suffolk University holding a BS in Theatre and Biology. Recent credits include Mama Rose in *Gypsy* and the Fortune Teller in *The Skin of Our Teeth*. When Jaime is not on the stage she is choreographing such shows as *Othello* at Suffolk University and the upcoming musical at Winthrop High School. She works at the South Boston Harbor Academy and at the Winthrop School of Performing Arts, where she teaches tap, jazz, and street funk. Jaime is honored to be on the stage at WFT, where - as a child - she was frequently in the audience.

(continued on page 11)



Professionally screened childcare for home, business & special events

45 Bartlett Crescent
Brookline, MA 02146
617-739-KIDS



CELEBRATING 20 YEARS OF ENCOURAGING CHILDREN TO WONDER, EXPLORE, INVENT, IMAGINE, DEVELOP SKILLS, AND PERSEVERE AT CHALLENGING WORK.

The Atrium is a progressive, independent elementary school serving children from pre-K to 6th grade.

Sodexo at Wheelock College

proudly supports and congratulates the

Wheelock College Theatre

for 22 years of entertaining all of our families.



729 Centre Street • Jamaica Plain • 617 522 7800

The Will Rogers Follies

A LIFE IN REVUE

BOOK BY
Peter Stone

MUSIC COMPOSED
AND ARRANGED BY
Cy Coleman

LYRICS BY
**Betty Comden
and Adolph Green**

Original New York Production Directed and Choreographed by
Tommy Tune

Inspired by the words of Will and Betty Rogers
Originally produced on Broadway by Pierre Cossette
Martin Richards, Sam Crothers, James M. Nederlander, Stewart F. Lane, and Max Weitzenhofer
In association with Japan Satellite Broadcasting, Inc.

DIRECTOR
Jane Staab

MUSICAL DIRECTOR
Jonathan Goldberg

CHOREOGRAPHER
Laurel Stachowicz

SET DESIGNER
Stefan Barnas

LIGHTING DESIGNER
Rich Testa

COSTUME DESIGNER
Marian Piro

ASL INTERPRETERS
**Tom Bourque &
Sharon Mendes**

STAGE MANAGER
Andrea T. Healy*

AUDIO-DESCRIBERS
**Robin Fradkin &
Paul Rubinstein**

CAST

Will Rogers	Scott Evan Davis*
Ziegfeld's Favorite	Merle Perkins*
Wiley Post	Byron Darden*
Clem Rogers	Chip Phillips*
Sisters	Meaghan Boeing, Yahanna Faith, Devan Fraser, Andrea Lyman, Caitlin Wheeler, Anna White-Nockleby
Florenz Ziegfeld	Stanley Rumbaugh
Cowboys	Dan Bolton*, Byron Darden*, Gary Thomas Ng*, Joshua Olkowski*, Brent Reno, Brian Robinson
Betty Blake	Eileen Nugent*
Will and Betty's Children	Bikrum Chahal, Natanjah Driscoll, Jacob Liberman, Alyssa Sahagian
Ziegfeld Girls	Jeanine Belcastro, Karen Q. Clark, Laura D. DeGiacomo, Caroline deLima, Bree Greig, Jaime Montesano, Melissa Prusinski, Alicia Russo, Sarah Wheeler, Kerri Nichole Wilson
Chorus	Natasha Ashworth, Adam Neves, Rachel Redd, Todd Rizley, Mary Caroline Szpak

Produced by arrangement with Tams-Witmark Music Library, Inc., 560 Lexington Ave., New York, NY 10022.

There will be one 15-minute intermission between the acts.

Ask the House Manager for individual sound enhancement devices.

The taking of photographs and use of recording devices is strictly forbidden. Please turn off cell phones and beepers. Please, no eating or drinking in the theatre.



Lighting for the Little Theatre was made possible by the generous support of Suzanne Newton.

*Member of Actors' Equity Association, the Union of Professional Actors and Stage Managers in the United States. The Wheelock Family Theatre is operating under the terms of a Developing Theatre's Program of Actors' Equity Association. The contract used is a Letter of Agreement.

MUSICAL ENSEMBLE

KEYBOARDS
Jonathan Goldberg

REEDS
Louis Toth, Ray Taranto

TRUMPET
Chris Hawes

KEYBOARDS
Harlan Feinstein, Todd Millen

PERCUSSION
Peter Himmer, Mick Lewander

MUSICAL PROGRAM

ACT ONE

- Prelude - Let's Go Flying* **Ensemble**
- Will-a-Mania* **Ziegfeld's Favorite & Chorus**
- Give a Man Enough Rope* **Will & Cowboys**
- It's a Boy* **Clem & Will's Sisters**
- My Unknown Someone* **Betty**
- The Big Time* **Will, Betty, et. al.**
- My Big Mistake* **Betty**
- Follies Ballet* **Ziegfeld Girls**
- The Wedding* **Ensemble**

ACT TWO

- Entr'Acte* **Cowboys & Will**
- Look Around* **Will**
- The Campaign* **Will & Ensemble**
- No Man Left for Me* **Betty**
- Presents for Mrs. Rogers* **Will & Cowboys**
- Never Met a Man I Didn't Like* **Will & Ensemble**

Boston Children's Opera

Jenni Harrison, *General Director* • David Budgell, *Artistic Director*
"children performing opera for children"

Robin Hood

Performances Feb. 27 - March 9

Sleeping Beauty

Rehearsals begin March 24
Performances May 29 - June 8

Summer Opera Arts

Two week opera program with acting, singing & set designing/building!
Fully staged & costumed 2 hour operas! Daily Mon.-Fri., June-Aug. Call for brochures.



Sing in an opera or attend a performance. Call: 617-628-0063

BOSTON ACADEMY OF MUSIC PRESENTS

TOSCA

by
Giacomo Puccini

Friday March 21 at 7:30pm
Sunday March 23 at 2:00pm
Tuesday March 23 at 7:30pm

Blackmun Theatre at Northeastern University

CALL 617 242-7311

Wheelock Family Theatre

STAFF

Producer	Susan Kosoff
General Manager	Jane Staab
Education Program Director	John Bay
Publicity and Marketing Director	Charles G. Baldwin
Assistant to the Producer/Grantswriter	Kay Arden Elliott
Access Coordinator	Jody Steiner
Technical Director/Stage Manager	Rich Archer*
Assistant Technical Director	Matt Lazure
Box Office Assistants	Alison Clark, Grace Napier
Props Coordinator	Mira Yamaoka
Assistant to the Director	Lauren Rudy
Assistant to the Stage Manager	Kiley Noonan
Master Electrician	Jeff Hubble
Electricians	Nicole Hatchey, Brad Johnson, Chris Marinis
Scenic Painters	James P. Byrne, Matt Lazure

EXECUTIVE COMMITTEE

Jeff Coburn and Lynne Rosansky, Co-Chairs; Carole Charnow, Edward F. Coakley, Andrea Genser, Susan Kosoff, Robin Mount, Stanley Rumbaugh, Michelle Seligson, Jane Staab

DIRECTOR'S CIRCLE

Judy Parks Anderson, Steve Aveson, Louis B. Casagrande, Peggy Charren, Eleanor Chin, Marian L. Heard, Pat Jehlen, Sara Lawrence-Lightfoot, Barbara Cole Lee, Frances Litman, Gordon L. Marshall, Sarah-Ann Shaw, Kate Taylor, Charles E. Walker, Jr., Liz Walker, Valora Washington, John B. Welch

FRIENDS OF THE FAMILY THEATRE

Robin Mount, Pat Maye-Wilson, Eileen Gallagher, Co-Chairs; Jory Agate-Mays, Janice Allen, Jean and Leroy Ashwood, Jane Bache, Kathleen Kirk-Bishop, Pat and Michael Blank, Jamie Chaloff, Beth Ann Cherry, Sue Cohen, Sarah and Joe Cortes, Leslie and Ned Crecelius, Elaine Deardon, Pam Dempsey, Joanne Driscoll, Wendy Drobnyk and Steve Soumerai, Mary Lee and Buzz Dunn, Joyce and Larry Eldridge, Jane Epstein, Bonnie Faith-Smith, Donna Feinberg, Beth Furth, Nancy Gardiner, Ronda Goodale, Sonia Hofkosh, Cyrisse Jaffee, Debby Keefe, Karen and John LaChance, Joni Liberman, Janet Marble, Stephanie Mavrides, Mary Murphy, Tricia Norton, Barbara and Don Oppenheimer, Evelyn Perkins, Martha Pierce, Ruth Rabadjija, Donna Reulbach, Kathleen Riddiough, Sharon Rich, Judi Rizley, Janet Rosen, Paula Ross, Ann Sorvari, Penny Wells

CREWS

Lynne Buckson, Zach Cone, Beth Lebowitz, Chris Marinis, Danny Marrone, Kasandre Monfort, Kiley Noonan, Audrey O'Brien, Nikki Pantaleon, Gamalia Pharms, Jennifer Provost, John Rogers, Lauren Rudy, Adam Salzer, Amber Sermabeikian, Kayloni Williams

VOLUNTEERS

Jordan Ashwood, Leroy Ashwood, Caitlin Axelrod-McCloud, Dan Bache, Emily Bache, Martha Bakken, Rachel Bikofsky, Laura Brody, Kalman Cagan-Teuber, Nicole Dunlop, Laurie Depuis, Yahanna Faith, Brenda Fengold, Keziah Furth, Polly Furth, Dan Geffken, Molly Geffken, Jen Gerber, Kevin Greeley, Rachel Greene, Elbert Joseph, Liz Kass, Allison Kessler, the Kivels, Emily Kosoff, Erica Kung, Claudia LaScola, Mark LaScola, Jacob Liberman, Mansur, Sarah Kate Miller, Cassie Murray, Meghan Otteson, Gamalia Pharms, Anna Rome, Bayla Shepley, the Sherleys, Jared Spencer, Adam Sussman, Jen Thayer

WORK/STUDY STUDENTS AND INTERNS

Nicole Ash, Carrie Card, Mikela Gilpin, Beth Lebowitz, Danny Marone, Ashley Mason, Mary Clare Moller, Kasandre Monfort, Nikki Pantaleo, Jennifer Provost, Amber Sermabeikian, Kayloni Williams, Lisa Wright

SPECIAL THANKS

Crate and Barrel; Meg DeRosa and Sodexo; Liz Donovan and the Garment District; Nicole Eckert for refreshments; Kevin Gillespie for poster design; Harwich Junior Theatre; Joni Liberman; Gerrald Silverman and Stride Rite Children's Group, Inc.; Ann Sorvari for the study guide; Worcester Foothills Theatre; Manny Heckley, Susan Mackey, Chris Anglin, and members of the Facilities staff; the Office of the President and members of the Wheelock College community who make this production possible.

We wish to thank all the people who have joined with us since the program went to press.

WHO'S WHO (continued from page 7)

Adam Neves (*Chorus*) is currently in his 3rd year at Northeastern studying finance. He grew up on the South Shore of Boston where he did community theatre and music during high school.

Gary Thomas Ng (*Cowboy*) is thrilled to be returning to WFT, where he last appeared in *The Trumpet of the Swan*. Other WFT credits include *Cinderella*; *Kiss Me, Kate*; *Once Upon a Mattress*; *Anne of Green Gables*; *Hello, Dolly!*; and *Lilly's Purple Plastic Purse*. Other favorites include *Children of Eden* at North Shore; Eugene in *Grease*, Judah/Baker in *Joseph . . . Dreamcoat*, and Principal Clark in *Footloose* at the Ogunquit Playhouse; Paul in *A Chorus Line*; Jacob in *La Cage Aux Folles*, and Norman in *The Boys Next Door*. Gary has also toured throughout the Far East in a new version of Cole Porter's *Aladdin* written by Michael Feingold.

Eileen Nugent (*Betty Blake*) is happy to be returning to WFT, where she last appeared as Tzeitel in *Fiddler on the Roof*. Recent credits include originating the role of Miriam in Emily Mann's *Meshugah* with Boston Theatre Works; *Berlin to Broadway with Kurt Weill* and the American premiere of *Midnight Sun* at Gloucester Stage; and originating the role of Betty Dancers in the Lyric Stage's world-premiere musical, *The Curse of the Bambino*. Eileen also appeared as Eva Crane in the Elliot Norton and IRNE award winning production of *Not About Nightingales* at Boston Theatre Works, and in productions at the Publick, the Sagan, SpeakEasy, and Wellfleet Harbor Actors Theatre. Look for Eileen as the prosecuting attorney in the next WB Mason commercial.

Joshua Olkowski (*Cowboy*) is thrilled to be making his debut with WFT! Past roles include Harry Houdini in *Ragtime* (Worcester Foothills), Smokey in *Damn Yankees*, Chino in *West Side Story*, the Fiddler in *Fiddler on the Roof* (Granbury Opera House, TX), Romeo in *Romeo and Juliet* (Shakespeare Now!), Laurie in *Little Women* (Wellesley Summer Theatre), and Lysander in *A Midsummer Night's Dream* (Seacoast Rep). Josh is an active member of the Tanglewood Festival Chorus and was a member of the Lone Star Ballet in Amarillo, TX.

Merle Perkins (*Ziegfeld's Favorite*) is happy to be back home at WFT. A veteran of many productions here, her favorites include *The Sound of Music*, *Charlotte's Web*, and *My Fair Lady*. Merle was seen last season in her IRNE-nominated performance as Eliza in *Walker* at Boston Playwrights' and in the IRNE-award-winning production of *The Band Wagon* with American Classics. Other recent credits include *Back to Bacharach and David* and *The Wild Party* (Kate) at SpeakEasy; *The New Normal and Freedom* at the Church of Christ, Scientist; God in Faith Soloway's schlock opera, *Jesus Has Two Mommies*; Neferdia in *Hamartia Blues* at Theater Offensive, and in the Vineyard Playhouse's *Ain't Misbehavin'*. Film, TV, and video credits include *All the Rage*, *Mermaids*, and many commercials, industrials, and museum exhibits. Merle works as a performer and director with young people in the Emmy Award-winning program, Urban Improv. She received her training at BU's School for the Arts and Walnut Hill School of Performing Arts.

Chip Phillips (*Clem Rogers*) is delighted to return to WFT, where he has appeared in *Anne of Green Gables*; *A Little Princess*; and *Kiss Me, Kate*. He recently completed a 19-month run of *I Love You, You're Perfect, Now Change* at the Stuart Street Playhouse. Other recent credits include Marty in *The Gig* (Lyric Stage); Max in *Lend Me a Tenor* (American Stage Festival); Wotan in *Das Barbecu* (New Rep); Hildy in *The Front Page* (Merrimack Rep); and *Berlin to Broadway* (Gloucester Stage).

(continued on page 12)

EDGEWATER



BED & BREAKFAST

"So close to the water
you'll think you're on a boat."

2 Oxford Street

Fairhaven, Massachusetts 02719

(508) 997-5512

Working Fireplaces



NEEDHAM CHILDREN'S CENTER, INC.

- INFANT ■ TODDLER ■ PRE-SCHOOL
- PRE-KINDERGARTEN ■ KINDERGARTEN
- AFTERSCHOOL ■ CAMP

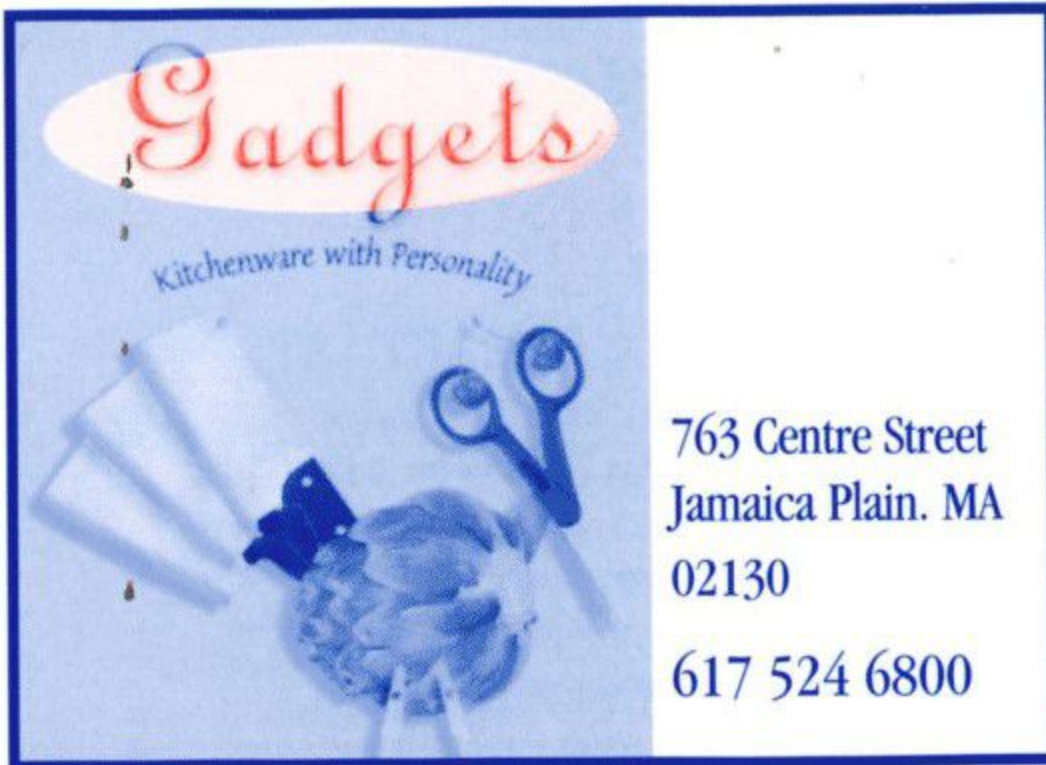
858 Great Plain Avenue, Needham, MA 02492
781-449-4486



BROOKLINE SAVINGS BANK

brooklinesavings.com

617-730-3500 Member FDIC



Gadgets
Kitchenware with Personality

763 Centre Street
Jamaica Plain, MA
02130
617 524 6800

life can be rough

sandpaper
a real smooth store

self care
incense
linens

tues-sat 11-7 sun 12-5

16 Birch Street, Roslindale 617.323.3610

old south preschool

Copley Square
645 Boylston Street
Boston, MA 02116
617-536-1970

ages 2-5

UNITED STATES TRUST COMPANY
BOSTON Investment Management

**Good luck
on your
2002-2003 season!**

40 Court Street, Boston Massachusetts 02108
(617) 726-7250

WHO'S WHO (continued from page 11)

Melissa Prusinski (*Ziegfeld Girl*) is thrilled to be making her WFT debut. She was most recently seen as Annie in *Chicago* at the Massasoit Theatre Company, Kit Kat Girl in *Cabaret*, and a lead dancer in *42nd Street* at the Company Theatre. Other favorite roles include Gladys in *Pajama Game*, Rosaline in *Loves Labors Lost*, Elizabeth in *Frankenstein*, and Morales in *A Chorus Line*. Thanks to her family and friends for all their support and encouragement. Mom, it all started with the dancing poodle costume!

Rachel Redd (*Chorus*), a 9th grader majoring in Theatre at Boston Arts Academy, has performed the leads in *Snow Queen*, *Winnie-the-Pooh*, and *The Phantom Tollbooth* and appeared for 3 years on *Zoom*, a PBS TV show by kids for kids. She has recently joined the choir at her church and practices with her sister Ivy, who is a singer. This is her WFT debut, and she looks forward to learning more about acting through this production.

Brent Reno (*Cowboy*) is a native Texan thrilled to be making his WFT debut. Area credits include *Sunday in the Park with George* (Soldier/Alex) and *The Curse of the Bambino* (Royal/Rooter) at the Lyric Stage; *Annie* (Rooster), *Joseph . . . Dreamcoat* (Joseph), *She Loves Me* (Kodaly), and *A Chorus Line* (Don) at Fiddlehead; *Stop! Look! Listen!*, *The Bandwagon*, and *Watch Your Step* at American Classics; and *Pirates of Penzance* (Frederick) at the Publick. In March he can be seen in *Chicago* at Fiddlehead and, in April, as Anthony in *Sweeney Todd* at the New Rep.

Todd Rizley (*Will at 13*, *Chorus*) is delighted to return to WFT for his 4th production. A sophomore at the Rivers School, Todd plays string bass, piano, and guitar and spends his summers at Stagedoor Manor Performing Arts Training Center. Credits include *Assassins*; *Little Shop of Horrors*; *Copacabana*; *The Sound of Music*; *The Prince and the Pauper*; *Hello, Dolly!*; *Anne of Green Gables*; *Our Time*; *Cabaret*; and *Bye Bye Birdie*. Look for Todd in the upcoming Sundance Film Festival movie *Camp*, produced by Killer Films.

Brian Robinson (*Cowboy*, *Stage Manager*) is happy to be making his WFT debut. He made his Boston stage debut as the Minister in SpeakEasy's *A New Brain*. He recently played Marshall Wilson in the Lyric Stage's *The Gig*; Oscar D'Armano in *The Wild Party*, and Count Ludovic/Lieutenant Torasso in *Passion*. Other credits include *Songs for a New World*, *Putting it Together*, and *A Grand Night for Singing*. Brian is a member of the Tanglewood Festival Chorus, the BSO chorus, and the Boston Pops Orchestra. As a Yale undergraduate, he performed in several stage productions and sang with the Whiffenpoofs. A graduate of Tufts School of Medicine, Brian now works as a physician/scientist at the Harvard School of Public Health.

Paul Rubinstein (*Secondary Audio-describer*) has been working for the MA Commission for the Blind since 1996, first as a reader, then as an audiotope transcriber, and now as administrative assistant to the commissioner. In his previous career as a Brookline-based architect he designed residences, hotels, shopping centers, and a school for emotionally disturbed children. Paul was trained as an audio-describer through workshops sponsored by Bay State Council of the Blind in the spring of 2001. His audio-description debut was as primary describer for *Nixon's Nixon* at the Huntington. Paul is also involved in local folk and contra dancing.

(continued on page 13)

WHO's WHO (continued from page 12)

Stanley Rumbaugh (*Florenz Ziegfeld*) made his WFT debut as Joe Stoddard in *Our Town*. Other memorable credits include the role of Charlemagne in the Wheelock/Wentworth Theatre Club production of *Pippin*. Vice President for Administration and Finance at Wheelock College, Stan is a member of WFT's Executive Committee and active in numerous professional, civic, and cultural organizations.

Alicia Russo (*Ziegfeld Girl*) recently moved to Boston from VT, and is pleased to be making her official Boston debut with WFT! Past credits include *Music Man* (Alma Hix), *Sweeney Todd* (1st Soprano), *Anything Goes* (Mrs. Harcourt), *Singin' in the Rain* (Dora Bailey), *Sweet Charity* (Carmen), *Peter Pan* (Liza), *Annie*, and *Crazy For You*. Most recently she appeared as Mabel, from *Pirates of Penzance*, in Riverside Theatre Works' 3-week workshop, Destination Broadway. Thanks to all who have supported her involvement in the performing arts and her love of musical theatre.

Alyssa Sahagian (*Freddy Rogers*) has appeared in 16 Boston Children's Theatre productions, most recently as the Queen in *Snow White*. She has also been seen in Boston Lyric Opera's *Don Carlos*, BU Opera Institute's *Jumping Frog of Calaveras County*, Underground Railway's *Alice's Adventures Underground*, and last year's middle school musical *Honk!* When not performing or in 6th grade, Alyssa can be found practicing the piano or playing on town soccer, basketball, or softball teams. This is her WFT debut.

Jane Staab (*Director*), WFT co-founder, has directed numerous productions here and loves what she does because she gets to watch so many talented actors, singers, and dancers perform and grow in some of the greatest American musicals ever written.

Laurel Stachowicz (*Choreographer*) comes to WFT from Northampton, where she lives with her husband and 2 daughters and attends Smith College. Recent credits include Worcester Foothills' *Ragtime*, SpeakEasy's *The Wild Party* and *Passion*, and Barrington Stage's *Ciao!*, *Suburbia*, and *Guys and Dolls*. Laurel has also worked for the Albany Berkshire Ballet and Disney, and is the resident choreographer for Wachusett Theater, Foothills' sister company. Thanks to Michael, Molly, Nyssa, and Brad.

Mary Caroline Szpak (*Chorus*), a 9th grader at Belmont High, has performed in many WFT shows including *Anne of Green Gables*, *Lilly's Purple Plastic Purse*, and *Tuck Everlasting*. She was last seen on the stage this fall as Baby June in Belmont High's production of *Gypsy*. Mary is also a dancer and has performed for 6 seasons in Boston Ballet's *Nutcracker*. She is happy to be in this show with so many old and new WFT friends!

Rich Testa (*Lighting Designer*) is pleased to be back designing for WFT. His past credits here include *The Trumpet of the Swan*, *Rebecca of Sunnybrook Farm*, *Stuart Little*, and *The Jungle Book*. Other design credits include *Mere Mortals* at the Nora; Alvin Ailey Rep Ensemble's new pieces entitled *Moments We Share*, *Last Montage*, and *Crossing 2 . . . To* and *Lark Ascending* (remount of original Ailey piece); *Entrevista 187* at the Dallas Theatre Center; *Die Fledermaus* at Opera Memphis; *Il Barbiere De Siviglia* at the Opera Company of El Paso; and *The Magic Flute* and *The Bartered Bride* for USC. Rich is the owner and principal designer of TLD - a lighting design firm that specializes in corporate industrial shows, architectural lighting, trade shows, and special live events.

(continued on page 14)

american crafted judaica • ceramics • fountains • stained glass • creative jewelry •
 home decorations • clocks • wood •




WILD GOOSE CHASE

...the end of the quest
for the perfect gift!

Visit our website: www.thewildgoosechase.com

and more! 1431 Beacon Street, Brookline, MA 02446 (617) 738-8020



Carolle Photography
 Photography for the Performing Arts

headshots • productions • events • CDs • portraits

Kippy Goldfarb
 617.426.9698 carollephoto@aol.com

566-1113 Flowers for All Occasions

Flowers of Boston
 In the Heart of the Medical Center

Peter Diamond
 Aspasia Diamond

409 Brookline Ave.
 (Cor. Longwood Ave.)
 Boston, Mass. 02215

All Right Mailing



Superior Quality
 Personal Touch
 Highest Level of Service
 State of the Art Equipment

First Class or Standard
 Ink Jet Addressing
 Metering
 Mail Merge
 Postal Discounts
 CASS Certification
 Data Entry
 Fulfillment

p (508) 652-0006
 f (508) 652-0715

www.allrightmailing.com

89J Washington Avenue Natick, MA 01760

KODAK ROYAL GOLD Film

■ Extra-clear, extra-sharp details

**FOR THE MOMENTS
THAT MATTER MOST.**



SINCE 1955

FERRANTI-DEGE
Photographic Stores

HARVARD SQUARE	LONGWOOD MEDICAL AREA
1300 Mass Ave.	712 Huntington Ave.
Cambridge	Boston
499-2750	232-2550

Arthur Blank & Company, Boston

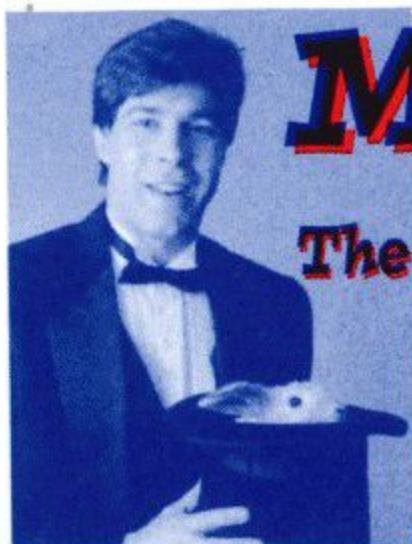


supports the Wheelock Family Theatre

FamiliesFirst
Parenting Programs

Fun and Interactive Programs
for Parents!

Check www.families-first.org or
call 617-868-7687 ext. 25
for our latest offerings!



MAGIC
with
The Amazing Richard

All Seats \$12
Group Rates

Mondays at 2:00 p.m.

February 17, March 17, April 21

WHO'S WHO (continued from page 13)

Caitlin Wheeler (*Sister*) is happy to return to the stage at WFT, where she was last seen as Lilly in *Lilly's Purple Plastic Purse*. Other WFT credits include Josie Pye in *Anne of Green Gables* and Sharon in *The Good Times Are Killing Me*. Caitlin will be back this spring in a braided red wig as Pippi in *Pippi Longstocking*.

Sarah Wheeler (*Ziegfeld Girl*) is making her WFT debut but has been dancing, singing, and acting on stage for as long as she can remember. Favorite shows include *Once Upon a Mattress* (Lady Larkin), *Singin' in the Rain*, *Bye Bye Birdie*, *Up the Down Staircase*, and *A Funny Thing . . . Forum* (choreographer). Currently she attends Mass College of Art, majoring in Art Education and Fibers. She dedicates this performance to her sister Caitlin.

Kerri Nichole Wilson (*Ziegfeld Girl*) is happy to be making her WFT debut. A 2000 graduate of American University in Washington, DC (Broadcast Journalism and Musical Theatre), Kerri was most recently seen in *Ragtime* at Worcester Foothills. Many thanks to the cast and crew for making this a great experience!

Anna White-Nockleby (*Sister*), a Theatre major at Walnut Hill School, has loved singing her whole life. She has appeared in many productions at the Boston's Children's Opera and in *Oliver!* (Artful Dodger) and *Annie* (Piper) with All About Us Theater Co. Anna has participated in Vacation Week Institutes at WFT and classes at Boston Children's Theatre. She loves performing, traveling, and spending time with her friends and her sister.

got talent?
make the most of it

in the
**Wheelock
Family Theatre
Education Program**

- SPRING & FALL CLASSES
- WEEKEND INTENSIVES
- VACATION WEEK INSTITUTES
- SUMMER PROGRAM

Pick up a copy of our new brochure
in the lobby and sign up today!

Call 617.879.2252 or 617.879.2235

SHOW YOUR WFT MEMBER CARD AND SAVE!

Advertisers on this page
offer discounts to all WFT Members!

brookline booksmith

an independent bookstore for independent minds

Your locally-owned
community bookseller
since 1961

books · journals · greeting cards · giftwrap
& other diverse delights for the literary lair

279 Harvard St. • Coolidge Corner • Brookline
617-566-6660 • www.brooklinebooksmith.com



The Children's Book Shop
237 Washington St. • Brookline
734 - 7323



The
Children's
Museum
Boston

Voted
one of the
three best
Children's
Museums

by Child Magazine!

Museum of Science
It's ALIVE!™

Wheelock Family Theatre
Education Program

**10% tuition discount
for WFT Members**

WFT is supported in part by grants from the Actors, Equity Foundation, Boston Cultural Council, The Boston Foundation Fund for Arts and Culture, FleetBoston Financial Foundation, Haymarket Community Corporation, The Mabel Louise Riley Foundation, The Massachusetts Cultural Council, The Peabody Foundation, The Sidney and Esther Rabb Charitable Foundation, Wheelock College, and VSA arts of Massachusetts.

The Wheelock Family Theatre is dependent on performance income and contributions. Your support is needed to sustain the Theatre. Contributions are tax deductible to the extent allowable by law and may be sent to the Wheelock Family Theatre, 200 The Riverway, Boston, MA 02215-4176.

It's the least we can do
for the people who've
done the most.

CITIZENS BANK IS PROUD TO SUPPORT
THE WHEELLOCK FAMILY THEATRE.

Thank you for going above and beyond
to provide innovative theatre and
casting diversity for everyone to enjoy.



CITIZENS BANK

Not your typical bank.