



**Wheelock
Family Theatre**

presents

The Witch of Blackbird Pond

November 1 - 24

BOSTON'S PREMIER FAMILY THEATRE SINCE 1981

BOSTON BALLET SCHOOL

ONGOING
ENROLLMENT
for **2002**
2003



Photo by Earsworth/Blalock Photography

Photo by Rania Matar

CHILDREN'S DIVISION AGES 3-7

Boston Studio
South End
(617) 456.6267

MetroWest Studio
Newtonville
(617) 456.6263

South Shore Studio
Norwell
(617) 456.6273

www.bostonballet.org

Boston Children's Opera

Jenni Harrison, *General Director* • David Budgell, *Artistic Director*

"children performing opera for children"

Snow White

Performances December 5 - 16

Robin Hood

Rehearsals begin Jan. 6. Performances Feb. 27-March 9

Sleeping Beauty

Rehearsals begin March 24. Performances May 29-June 8

Summer Opera Arts

Two week opera program with acting, singing & set designing/building!
Fully staged & costumed 2 hour operas! Daily Mon.-Fri., June-Aug. Call for brochures.



Sing in an opera or attend a performance. Call: 617-628-0063

BOSTON ACADEMY OF MUSIC PRESENTS

GILBERT & SULLIVAN

The Pirates of Penzance

Fri, Nov. 29, 7:30

Sat, Nov 30, 2:00 and 7:30

Sun, Dec. 1, 2:00

Blackman Theatre at Northeastern University

SATURDAY FAMILY SPECIAL:

Buy three tickets and get the fourth FREE!!

CALL 617 242-7311

Wheelock Family Theatre Education Program

- **SPRING & FALL CLASSES**
- **WEEKEND INTENSIVES**
- **VACATION WEEK INSTITUTES**
- **SUMMER PROGRAM**

Celebrate the New Year with WFT!

Join our *First Night Workshop* on Saturday, 12/28, from 9:00-3:30 and make puppets and a Chinese dragon. Then join other WFT characters in the *First Night Procession* on Tuesday, 12/31.

Call 617.879.2235

to register for the *First Night Workshop*, for more information on any of our classes, or to join the Education Program mailing list.

November 2002

Dear Theatre-goer,

Before we bring up the lights on our 22nd season, I want to share news of important events that happened during and after our successful run last spring of *The Trumpet of the Swan*.

In April, at a gala event, WFT presented the first annual WHEEL Award (Wheelock Heroes Enrich Everyone's Life) to Fred M. Rogers - better known to the world as Mister Rogers - to honor his contributions to the lives of children and families through the arts. Stay tuned to learn who the second worthy honoree will be this spring.

In May, WFT received the Tops of the Avenue Award for Arts Excellence from the Arts and Business Council of Greater Boston. And, in June, WFT received the 2002 StageSource Theatre Hero Award, which honors exceptional service and commitment through leadership, support, inspiration, innovation, and promotion of the art of theatre throughout the region.

These thrilling accolades affirm that our mission to make professional theatre accessible to everyone continues to make a positive difference in our community.

And now, on with the show! Welcome to *The Witch of Blackbird Pond*, the dramatic adaptation of Elizabeth George Speare's 1958 Newbery Medal award-winning novel. It is a story that reminds us - as the painted backdrop you see before you so masterfully depicts - both of the danger in allowing our world to be defined by its most rigid and orthodox members and of the responsibility that we all share for the trials of humanity.

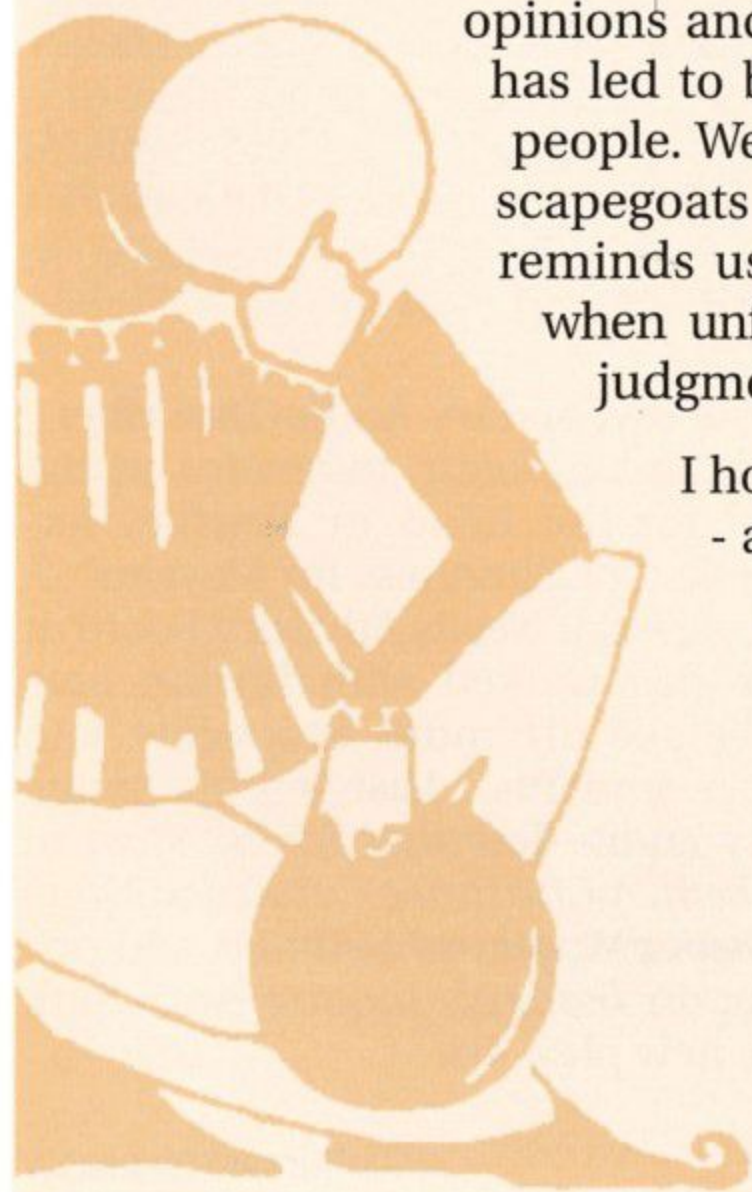
In the study guide for *The Witch of Blackbird Pond* (which is available in the lobby), Ann Sorvari makes clear the connection between the Puritan world and our own. We are familiar, especially since the terrorist attacks of September 2001, with fear of the unknown or unusual, of outsiders, of independent thought, of the opinions and judgments of others. And we have seen how that fear has led to blaming and to lashing out against whole categories of people. We may no longer brand Quakers, but we have found our scapegoats nevertheless. Watching *The Witch of Blackbird Pond* reminds us of what happens when logic gives way to emotion and when unfounded accusations are given credence in a court of judgment.

I hope to see you in our audience for *The Will Rogers Follies* - a razzle-dazzle musical tribute to an American icon!

Sincerely yours,

Susan Kosoff

Susan Kosoff, Producer





Prudential Prime Properties

Your hometown REALTOR
with national connections...

Imagine the possibilities.

FULL SERVICE REAL ESTATE

673 Centre Street, Jamaica Plain (617) 524-5431

2 Dartmouth Street (617) 421-1600

Serving Metropolitan Boston

www.pruprimeboston.com

Jewish Community Centers of Greater Boston

- ★ Nurturing Children
- ★ Embracing Families
- ★ Mentoring Teachers
- ★ Creating a Caring Jewish Community

Quality preschool learning experiences for children ages 2-5 offering full-day and part-day; full-week and part-week; school year and full year flexibility



ACTON

JCC Early Childhood Education Center in Acton
(978) 266-9988
Prospect Street off Route 111
Director: Ronit Ben-Shir

BROOKLINE/BRIGHTON

Leventhal-Sidman JCC Preschool at Brookline / Brighton
(617) 278-2950, ext. 221
Sutherland Road at Cleveland Circle
Director: Indira Herscovici

CANTON

Striar JCC Canton Preschool & Full Day Learning Center
(781) 828-3507
Intersection of Routes 128 & 138
Director: Gayle Karp

NEWTON

Gan Yeladim Early Learning Center
(617) 965-1370
Wells Avenue Office Park
Director: Sara Sinai

Leventhal-Sidman JCC Campus Preschool
(617) 558-6420

Route 128, Exit 19B, near Needham town line
Director: Beth Sagan

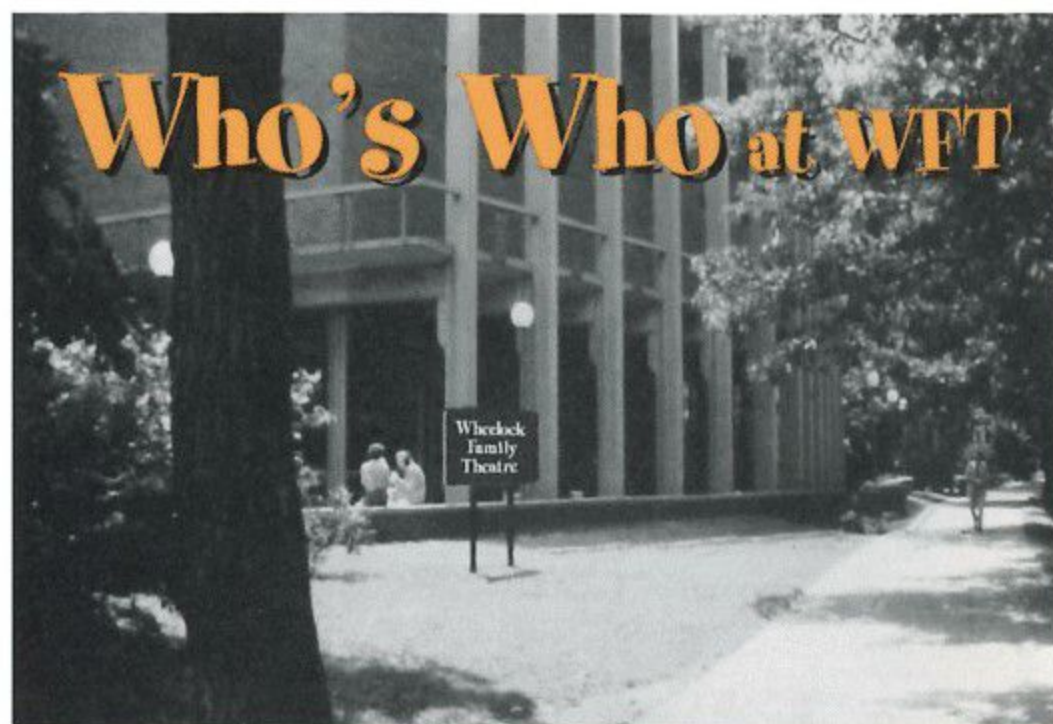
STOUGHTON

Striar JCC Preschool & Full Day Learning Center
(781) 341-2016, ext. 153
Central Street near Route 24
Director, Preschool: Lisa Aframe, ext. 182
Director, Full Day Learning Center: Mimi Shapiro, ext. 156

WAYLAND

JCC Preschool in Wayland
(508) 358-5331
141 Boston Post Road (Route 20)
Director: Anne Spector

Who's Who at WFT



Andrew F. Aldous (Sound Designer) is happy to be back at WFT, where he has also contributed to *Our Town*, *The Tempest*, and *The Good Times Are Killing Me*. Other recent credits include the Nora's *Asher's Command*. The house production sound engineer for the Huntington, Andrew is currently mixing the new musical, *Marty*.

Rich Archer (Technical Director, ASM) majored in theatre arts at UMass and is a founding member of the Peabody House Theatre in Somerville. In the past, you may have seen his special effects in WFT's *Aladdin* and *The Hobbit*. Rich (a.k.a. The Amazing Richard) presents his popular magic show for children throughout Massachusetts. Be sure to see him perform here during winter and spring school vacations on WFT's Magic Mondays!

Shelley Bolman (Nat) taught drama at the Price School in Andover for seven years. He has appeared locally at the Theatre Cooperative, the New Rep, and Lyric West, among others. Shelley works with Theater Espresso, an educational theatre group that performs at the Federal Courthouse and in local schools, and he teaches Tae Kwon Do at the J.H. Kim School in Cambridge. This is his WFT debut.

Lynne Bridges (Secondary Audio-Describer), an orientation and mobility instructor at the Carroll Center for the Blind in Newton, has worked in the field of Blindness for 15 years. A member of the Special Needs Advisory Board at the MFA, she has worked with Boston area museums to make art more accessible and available to her students. Last season, Lynne was secondary audio-describer for *Barefoot in the Park*, *Macbeth*, *A Christmas Carol*, and *Don't Dress for Dinner* at Worcester Foothills and primary describer on *Ten Little Indians* (with Ruth Kahn) and the new play, *Art*.

(continued on page 5)

WHO's WHO (continued from page 4)

James P. Byrne (Director, Set Designer) "grew up" at the Harwich Junior Theatre and now produces, teaches, designs, and directs theatre with and for all ages, from Provincetown to Boston, New York to New Orleans to Los Angeles. Using drag queens, children, visual artists, and professional actors, Jim has presented works by Shakespeare, Frank L. Baum, Charles Ludlum, Homer, the Dalai Lama, the Hopi, and Ryan Landry. Previous WFT directing credits include *The Trumpet of the Swan*, *The Prince and the Pauper*, *The Jungle Book*, *The Tempest*, *The Hobbit*, *Stuart Little*, *Romeo and Juliet*, *Happy Days*, and *The Wizard of Oz*.

Janice Cagan-Teuber (ASL Interpreter) hails from southern California and has a degree from the CA State University at Northridge, in theatre. She has been living and working in MA since 1971, and has been an interpreter working between ASL and English for the past 32 years. A certified ASL interpreter, Janice has interpreted the Broadway road show productions of *Annie*, *Fiddler on the Roof* (with Theodore Bikel), and *Titanic*, as well as local productions at the Merrimack Rep and the American Repertory Theatre. *The Witch of Blackbird Pond* is her second Wheelock production.

Erik Dickinson (Talbot) last appeared on the Wheelock stage as Simon Stimson in *Our Town*. He is pleased to have been a member of the Wheelock family for many years. Other favorite roles here include Tuck in the original production of *Tuck Everlasting*, Bumble in *Oliver*, the King in *Cinderella*, and Parris in *The Crucible*.

John Ewing (Mural Artist) is a muralist and video artist who has worked for more than 10 years creating public art with an emphasis on community participation and social justice. He

(continued on page 7)



The Intelligent
Dance Alternative

Ages 3-12
Creative Movement
Tap • Jazz • Ballet

261 Friend Street
by the Fleet Center
Call for a brochure:
(617) 523-1355

J.P. LICKS

Homemade Ice Cream & Frozen Yogurt

Stop by after the show!



Boston • 352 Newbury Street
Brookline • 311 Harvard Street
Jamaica Plain • 659 Centre Street
Newton Centre • 46 Langley Road
West Roxbury • 661 VFW Parkway



Aglio

Without it we would be just another restaurant.

Discover why they say "Sorrento's, the most addictive name in Italian cuisine".

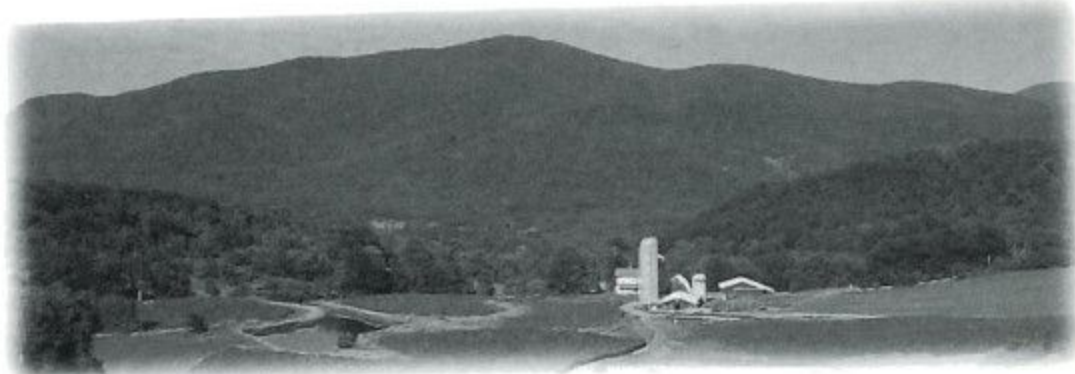
Bring this ad and receive 20% off the price of your meal (alcoholic beverages excluded).

Open till midnight, enjoy the show.

86 Peterborough Street Boston, MA 02215 • Tel. (617) 424-7070 Fax (617) 424-8699 • offer expires 12/31/02



The Art of Cheese Making



CABOT CHEDDAR

At farmer-owned Cabot Creamery in Vermont, we know a thing or two about performances and the creative process that inspires award-winning classics.

Using an original score, played time and again through generations of Cabot families, we've perfected the art of crafting cheddar. Not a note has been changed since our forefathers began handcrafting our all-natural cheddars over 80 years ago. The standing ovations speak for themselves. We've won every major taste competition for cheddar cheese, including Best in the World at the World Championship Cheese Contest in Green Bay, Wisconsin and this Spring Best in the U.S. for the third time.

Whether you prefer classic or flavored cheddar, or even the pure strains of our natural creamery butter, Cabot has something to excite your taste. We guarantee you'll enjoy the performance.

Look for Cabot Cheddar Cheese in your grocer's dairy or specialty cheese case.



www.cabotcheese.com

**Congratulations &
Continued Success Bringing
the Best of Children's Literature
to Life!**



THE BOSTON
Parents' Paper

617-522-1515

WHO's WHO (continued from page 5)

was selected from an international group of candidates to work for two years in El Salvador, using the arts to organize and inspire dialogue about human rights. His work includes projects in Nicaragua, Uruguay, and Cuba, as well as various cities across the U.S. and has been featured in *ArtNews Magazine*, the *Boston Globe*, the *Boston Herald*, FOX Television News, and WGBH television, among others.

Julianne Gale (Judith) is thrilled to return for her 7th production here at WFT. Last seen on this stage as Bet in *The Prince and the Pauper*, she has since played Anne (narrator) in Needham Community Theater's *The Diary of Anne Frank*, directed *Within the Shadows* at Milton Academy, and been named a 2002 Arts First Promising Student in theatre. She wishes to thank her family, friends, and frog.

Kippy Goldfarb (Rebecca) is delighted to be working with WFT. She last appeared here as Mrs. Gibbs in *Our Town*. Recent roles include Denise in *One Night in the Life of Denise Ivanovich* (W.H.A.T.); Vivian Bearing in *Wit* (Persephone); and Regina in *Little Foxes* (Lyric West). Other roles include Linda in *Death of a Salesman*, Sarah in *Sisters Rosenzweig*, and Mrs. Warren in *Mrs. Warren's Profession* (Worcester Foothills); Mother in *House of Yes* and Professor in *American Notes* (Coyote); Mrs. Wickett in *Texarkana Waltz* (Matilda Productions); Mama in *Midnight Sun* (Gloucester Stage); and Mama in *A Shayna Maidel* (Vineyard Playhouse). Kippy has also been seen in *Death of a Salesman* (Papermill Playhouse) and *Bill W. and Dr. Bob* (San Diego Rep).

Neil Gustafson (Gideon) is happy to return to the WFT stage, where he was last seen as King Henry VIII and The Ruffler in *The Prince and the Pauper*. He was also seen by Wheelock audiences as King Alonso in *The Tempest* and as Teddy Lloyd in *The Prime of Miss Jean Brodie*. Neil continues to perform his one-man show *Isaiah Thomas - Patriot Printer* for the American Antiquarian Society. Internationally, he has appeared in works by Shakespeare and Chekhov. On TV, he has played roles on *The Practice*; *Spenser: For Hire*; *A Midwife's Tale*; and *Black Bellamy's Treasure*. On the big screen, Neil played Yuri Spinov in *Next Stop, Wonderland*. His favorite role is as the father of his own lovely Miss Kit, a.k.a. Katherine.

(continued on page 10)



Professionally screened
childcare for home,
business & special events

45 Bartlett Crescent
Brookline, MA 02146
617-739-KIDS



CELEBRATING 20 YEARS
OF ENCOURAGING
CHILDREN TO
WONDER, EXPLORE,
INVENT, IMAGINE,
DEVELOP SKILLS, AND
PERSEVERE AT
CHALLENGING
WORK.

The Atrium is a progressive, independent
elementary school serving children from
pre-K to 6th grade.

Sodexho at Wheelock College

proudly supports and congratulates the

Wheelock College Theatre

for 22 years of entertaining all of our families.

Sodex'ho



729 Centre Street • Jamaica Plain • 617 522 7800

The Witch of Blackbird Pond

by **Y. York**

based on the novel by Elizabeth George Speare
published by Houghton Mifflin Co.

DIRECTOR AND SET DESIGNER

James P. Byrne

LIGHTING DESIGNER

Russ Swift

COSTUME DESIGNER

Marian Piro

SOUND DESIGNER

Andrew F. Aldous

ASL INTERPRETERS

Janice Cagan-Teuber
Jina Porter

PRODUCTION STAGE MANAGER

Andrea T. Healy*

MURAL ARTIST

John Ewing

AUDIO-DESCRIBERS

Ruth Celia Kahn **Lynne Bridges**

CAST

Kit Tyler	Katrina Toshiko*
Nat Eaton	Shelley Bolman
Reverend Gideon Gish	Neil Gustafson*
Goody Rebecca Gish	Kippy Goldfarb*
Prudence Gish	Jenna Spencer
John Holcomb	Stephen Libby
Matthew Wood	Jeff Robinson*
Rachel Wood	Monique Nicole McIntyre*
Mercy Wood	Saba Mwine*
Judith Wood	Julianne Gale
William Ashby	Samuel Young
Hannah Tupper	Jane Staab*
Miss Cat	Veronica Maxfield
Magistrate Talbot	Erik Dickinson*

TIME: **1687** PLACE: **Connecticut Colony**

There will be one 15-minute intermission between the acts.

Ask the House Manager for individual sound enhancement devices.

The taking of photographs and use of recording devices is strictly forbidden. Please turn off cell phones and beepers. Please, no eating or drinking in the theatre.

Lighting for the Little Theatre was made possible by the generous support of Suzanne Newton.



*Member of Actors' Equity Association, the Union of Professional Actors and Stage Managers in the United States. The Wheelock Family Theatre is operating under the terms of a Developing Theatre's Program of Actors' Equity Association. The contract used is a Letter of Agreement.

Wheelock Family Theatre

STAFF

Producer	Susan Kosoff
General Manager	Jane Staab
Education Program Director	John Bay
Publicity and Marketing Director	Charles G. Baldwin
Assistant to the Producer/Grantswriter	Kay Arden Elliott
Access Coordinator	Jody Steiner
ASL Consultant	Ayisha Knight
Special Events Coordinator	Sarah Kuzminski
Technical Director/Stage Manager	Rich Archer
Assistant Technical Director	Troy Kidwell
Box Office Assistants	Alison Clark, Grace Napier
Props Coordinator	Mira Yamaoka
Props Assistants	Liz Fortini, Lauren Rudy
Assistant to the Director	Kiley Noonan
Master Electrician	Jason Hoots

EXECUTIVE COMMITTEE

Jeff Coburn and Lynne Rosansky, Co-Chairs; Carole Charnow, Edward F. Coakley, Andrea Genser, Susan Kosoff, Robin Mount, Stanley Rumbaugh, Michelle Seligson, Jane Staab

DIRECTOR'S CIRCLE

Judy Parks Anderson, Steve Aveson, Louis B. Casagrande, Peggy Charren, Eleanor Chin, Marian L. Heard, Pat Jehlen, Sara Lawrence-Lightfoot, Barbara Cole Lee, Frances Litman, Gordon L. Marshall, Sarah-Ann Shaw, Kate Taylor, Charles E. Walker, Jr., Liz Walker, Valora Washington, John B. Welch

FRIENDS OF THE FAMILY THEATRE

Robin Mount, Pat Maye-Wilson, Eileen Gallagher, Co-Chairs; Jory Agate-Mays, Janice Allen, Jean and Leroy Ashwood, Jane Bache, Kathleen Kirk-Bishop, Pat and Michael Blank, Jamie Chaloff, Beth Ann Cherry, Sue Cohen, Sarah and Joe Cortes, Leslie and Ned Crecelius, Elaine Deardon, Pam Dempsey, Joanne Driscoll, Wendy Drobnyk and Steve Soumerai, Mary Lee and Buzz Dunn, Joyce and Larry Eldridge, Jane Epstein, Bonnie Faith-Smith, Donna Feinberg, Beth Furth, Nancy Gardiner, Ronda Goodale, Sonia Hofkosh, Cyrisse Jaffee, Debby Keefe, Karen and John LaChance, Joni Liberman, Janet Marble, Stephanie Mavrides, Mary Murphy, Tricia Norton, Barbara and Don Oppenheimer, Evelyn Perkins, Martha Pierce, Ruth Rabadjija, Donna Reulbach, Kathleen Riddiough, Sharon Rich, Judi Rizley, Janet Rosen, Paula Ross, Ann Sorvari, Penny Wells

CREWS

Beth Ascoli, Melanie Basque, Liz Fortini, Jessica Gabrielson, Jen Gerber, Mikela Gilpin, Rachel Green, Emily Kosoff, Beth Lebowitz, Veronica Lewis, Chris Marinas, Danny Marone, Kasandre Monfort, Nikki Pantaleo, Jennifer Provost, Lauren Rudy, Amber Sermabeikian, Adam Salzer, Cheryl Smith, Rob Timmerman

VOLUNTEERS

Laura Brody, Sarah Coburn, Ellen Davidson, Michelle Green, Rachel Green, Jill Hatton, Linda Jones, Donna Levin, John Mehr, Nancye Mims, Grace Napier, Joanne Nelson, Shippen Page, Tara Reid, Kelly Shrimpton, Karen Zell

WORK/STUDY STUDENTS AND INTERNS

Nicole Ash, Carrie Card, Korie Dobson, Mikela Gilpin, Beth Lebowitz, Danny Marone, Ashley Mason, Mary Clare Moller, Kasandre Monfort, Nikki Pantaleo, Jennifer Provost, Amber Sermabeikian, Lisa Wright

SPECIAL THANKS

Marianne Adams; Lynne Buckson; Meg DeRosa and Sodexo; Chris DiMeo; Charlotte Glick; Kippy Goldfarb for photography; Gregory Gomez for poster design; Myles Gordon for lumberjacking; Harwich Junior Theatre; Sara Joy for spinning technique; Genevieve Kilman; Ann Sorvari for the study guide; Manny Heckley, Susan Mackey, Chris Anglin, and members of the Facilities staff; the Office of the President and members of the Wheelock College community who have made this production possible.

We wish to thank all the people who have joined with us since the program went to press.

KODAK ROYAL GOLD Film

■ Extra-clear, extra-sharp details

FOR THE MOMENTS
THAT MATTER MOST.



SINCE 1955

FERRANTI-DEGE
Photographic Stores

HARVARD SQUARE
1300 Mass Ave.
Cambridge
498-2750

LONGWOOD MEDICAL AREA
712 Huntington Ave.
Boston
232-2550

Arthur Blank & Company, Boston



supports the Wheelock Family Theatre

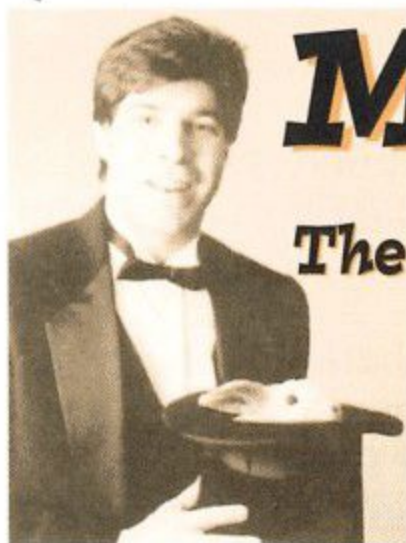
RUBY's SUB SHOP
...only place on campus!

Great during intermission.
One minute walk from the theatre!

Ice cream, candy, frappes, all kinds of snacks.

SUNDAY – THURSDAY 8:00 A.M. - 11:00 P.M.
FRIDAY – SATURDAY 8:00 A.M. - 3:00 A.M.

19 Pilgrim Road, Boston
(right next to the Theatre parking lot!)
COME ON IN!



MAGIC

with

The Amazing Richard

All Seats \$12
Group Rates

Mondays at 2:00 p.m.

February 20, March 17, April 21

WHO's WHO (continued from page 7)

Andrea Healy (Production Stage Manager) is pleased to be back for her 3rd season at WFT. As a child she attended the Harwich Junior Theatre on Cape Cod and eventually worked there as a stage manager, creative drama teacher, and business manager. She has also stage managed at Wellfleet Harbor Actors Theatre. Last summer, Andrea taught drama at the Kaleidoscope creative arts camp in Newton. She has a B.A. in Education from UMass Amherst.

Ruth Celia Kahn (Audio-Describer) says, "Access for everyone is a joyous process, especially here at WFT!" Last season, Ruth was secondary describer for WFT's *The Trumpet of the Swan* and *Rebecca of Sunnybrook Farm*. She also served as secondary describer for *Ten Little Indians* at Worcester Foothills. When she's not hanging around backstage, Ruth can be found at the Museum of Fine Arts, Boston, where she is the new accessibility assistant.

Stephen Libby (John) is happy to be making his debut at WFT. Area theatre-goers may remember his play *Timber* from last year's Fort Point Outdoor Theatre Festival. He recently graduated from Syracuse University, where he was proud to perform in *Art*, *The Day Room*, and several improv shows and also managed to dabble in writing and directing. Originally from Connecticut, Stephen is thrilled to be in Boston and eagerly awaits the return of his alien masters.

Victoria Maxfield (Miss Cat) is 9 years old and home schooled. She lives in Jamaica Plain with her 3-year-old sister, cat Muffin, dog Lucy, two parakeets, and mom and dad. She is currently in *Urban Nutcracker* as well. Victoria enjoys reading, sewing, and writing in her spare time. Her mom enjoys being her personal taxi cab driver and her dad enjoys being her personal bodyguard. Victoria has taken her role as cat so seriously that she now uses the litter box at home.

Monique Nicole McIntyre (Rachel) is thrilled to be back at WFT! Past credits here include *Rebecca of Sunnybrook Farm*; *The Prince and the Pauper*; *Anne of Green Gables*; *Androcles and the Lion*; *Ah, Wilderness!*; *Tuck Everlasting*; and *The Good Times Are Killing Me*, for which she received an IRNE nomination. Recent roles around Boston include Quilly in the Lyric's *Old Settler* (IRNE Award for Best Actress and Elliot Norton Award for Best Production, 1999); Mrs. Winsley and the

(continued on page 11)

WHO's WHO (continued from page 10)

Nurse in the Nora's *Stop Kiss*; and Donna in the Merrimack's *Defying Gravity*. Monique has also enjoyed her roles as Rose in *Fences*, Molly in *Joe Turner's Come and Gone*, Gwen in *Fifth of July*, and Lala in *The Colored Museum*. Big hugs and kisses to her family for all their love and support during the run of the show! Monique is eagerly awaiting the birth of her second child, due in January.

Saba Mwine (Mercy), a Wheaton College graduate in theatre, made her Boston debut with the Huntington's production of *A Point of Departure*. She went on to tour nationally with Underground Railway's production of *Are You Ready My Sister?* Later she understudied the role of Tonya in the Huntington's production of August Wilson's latest work, *King Hedley II*. This is her first appearance at WFT.

Marian Piro (Costume Designer) co-founded Costumes by Illusions in 1986 and designs for theatres nationally and locally. In and about the Boston area, the company has worked with Chiswick Park, the Lyric, North Shore, and WFT. Among the many shows she has designed professionally are *The King and I*, *Lend Me a Tenor*, *As You Like It*, *The Man Who Came to Dinner*, *The Secret Garden*, and *Chicago*.

Jina Porter (ASL Interpreter) is an ASL-English interpreter for Massachusetts Commission for the Deaf and Hard of Hearing, working in the Boston metropolitan area. Her theatrical interpreting credits include working as a member of the interpreting team for *Anne of Green Gables* here at Wheelock Family Theatre and for *Aida* at the Wang Center.

Jeff Robinson (Matthew) has been seen on the WFT stage in *Our Town*, *Rebecca of Sunnybrook Farm*, *The Good Times Are Killing Me*, *Little Women*, and *To Kill a Mockingbird*. Other credits include Zachariah in Athol Fugard's *Bloodknot* at the Mass Bay Theatre in Boston. He has worked with the Black Folks Theatre, Playwright's Platform, New Theatre, Merrimack Rep, and many more. A saxophonist who has toured throughout the Caribbean, Europe, Canada, and the States with several jazz, blues, rock, and world music bands, Jeff also appears in his one-man play, *Live Bird*, about jazz legend Charlie Parker. He has studied acting with Oleg Tabakov, the artistic director of the Moscow Art Theatre Company, and Kristin Linklater, the world-renowned voice/Shakespeare scholar. It's a pleasure to return to WFT.

(continued on page 12)

EDGEWATER



BED & BREAKFAST

"So close to the water
you'll think you're on a boat."

2 Oxford Street

Fairhaven, Massachusetts 02719

(508) 997-5512

Working Fireplaces

NEEDHAM
CHILDREN'S
CENTER, INC.

■ INFANT ■ TODDLER ■ PRE-SCHOOL
■ PRE-KINDERGARTEN ■ KINDERGARTEN
■ AFTERSCHOOL ■ CAMP

858 Great Plain Avenue, Needham, MA 02492

781-449-4486

BROOKLINE
SAVINGS BANK

brooklinesavings.com

617-730-3500 ☐ Member FDIC



Gadgets
Kitchenware with Personality

763 Centre Street
Jamaica Plain, MA
02130

617 524 6800

life can be rough

sandpaper

a real smooth store

self care
incense
linens

tues-sat 11-7 sun 12-5

16 Birch Street, Roslindale 617.323.3610

old south preschool

Copley Square
645 Boylston Street
Boston, MA 02116
617-536-1970

ages 2-5

UNITED STATES TRUST COMPANY
BOSTON Investment Management

**Good luck
on your
2002-2003 season!**

40 Court Street, Boston Massachusetts 02108
(617) 726-7250

WHO's WHO (continued from page 11)

Jenna Spencer (Prudence), a 5th grader at the Graham and Parks School in Cambridge, is thrilled to be performing in her 7th WFT production. Past WFT credits include *The Tempest*, *The Jungle Book*, *The Prince and the Pauper*, *Lilly's Purple Plastic Purse*, *Rebecca of Sunnybrook Farm*, and *The Trumpet of the Swan*. She has also appeared in the pre-Broadway production of *Macbeth* at the Colonial Theatre with Kelsey Grammer and in *Black Nativity*. Jenna models locally with Model Club, Inc. She enjoys singing, playing recorder, acting, drawing, and writing.

Jane Staab (Hannah), a founder of WFT, has directed numerous productions, including *Tuck Everlasting*, *Hello, Dolly!*, and *Anne of Green Gables*, and looks forward to *The Will Rogers Follies* opening in February. As resident AEA actress, she appreciates the opportunity to play so many varied roles - from a five-year-old mouse in *Lilly's Purple Plastic Purse* to the crotchety old aunt Miranda in *Rebecca of Sunnybrook Farm* to such classics as the Nurse in *Romeo and Juliet*, Anna in *The King and I*, and, her favorite, Emily Dickinson in *The Belle of Amherst*. Previous to her years at WFT, Jane worked in NYC and regionally at the CA and NJ Shakespeare Festivals, Hartford Stage, Fort Lee Rep, Playwrights Horizons, and in the Broadway production of *The Prince of Homburg* with Frank Langella. She's happy here at WFT, witnessing the success in NY and Hollywood of several students she has coached over the years and sharing the stage with so many talented young people who blossom and grow with each new experience in the theatre.

Russ Swift (Lighting Designer) is pleased to be with WFT again. Past designs include *Tuck Everlasting*, *Hello, Dolly!*, *The Tempest*, *The Hobbit*, and *Anne of Green Gables*. He has designed *The Gig*, *Glengarry Glen Ross*, *Nuncrackers*, *The Miracle Worker*, *Inspecting Carol*, and *No Way to Treat a Lady* (Lyric); *Pygmalion* (Bristol Riverside Theatre); *The Orphan Queen* (Jewish Theatre of NE); and numerous productions for the Publick. He has been lighting supervisor for the Chamber Theatre and has designed for the Boston Lyric Opera, Worcester Forum, Boston Playwrights', and the Theatre of Newburyport. Currently, Russ is on the design faculty at Emerson College and serves as executive vice president for the NE Theatre Conference. He thanks Mayre and Michaela for their love.

(continued on page 13)

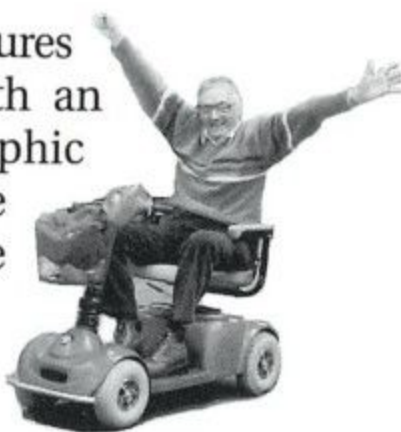
WHO'S WHO (continued from page 12)

Katrina Toshiko (Kit) made her WFT debut as a pillow carrier in *Aladdin*. She just finished a season at the NJ Shakespeare Festival, where she played Renardo in *Carnival* with Bob Cuccioli; Gila in *One for the Road*; and Plangon in *The Grouch*. NY credits include productions at Circle East, Manhattan Theatre Source, Henry Street Settlement, the International NY Fringe Festival, Red Lab, and an abandoned Key Foods parking lot. Film credits include Steffen Wild's *Pandora's Box*, *Grace in Waiting*, and *American Lullaby*, as well as an educational film that they insist upon showing at the USS Constitution Museum in Boston. Katrina is a graduate of the National Theatre Institute, the London Academy of Theatre, Boston College, Boston Latin, and the Learning Project Elementary School. She lives in Brooklyn, but her heart is in Jamaica Plain.

Samuel Young (William), a graduate of Eastern Nazarene College, is excited to be making his debut at WFT. He has appeared in productions at Theatre Cooperative, Industrial Theatre, Shakespeare Now!, and Boston Playwrights. Favorite roles include Roderigo in *Othello*, Demetrius in *A Midsummer Night's Dream*, Horatio in *Hamlet*, Stephano in *The Tempest*, and Hector in *Real Dead*. Thanks to all involved in making this such a wonderful experience (including the manufacturers of Pepto Bismol.)

Jack Viall (Resident Printer for WFT for 22 years) is no longer amongst us, but is forever in our hearts.

He created playbills, posters, brochures for Wheelock Family Theatre with an amazing graphic sense, typographic artistry, a forever surprising sense of humor, and a great love for the family that makes up WFT. He was so proud to be a part of the magic.



Samet & Company PC

Certified Public Accountants
& Business Advisors

Members of the Massachusetts Society of CPAs
Members of the American Institute of CPAs

Norman P. Posner, CPA

Tel: (617) 731-1222

Fax: (617) 734-8052

Email: normanposner@samet-cpa.com

1330 Boylston Street, Chestnut Hill, MA 02167 • e-mail: <http://www.samet-cpa.com>

american crafted judaica • ceramics • fountains • stained glass • creative jewelry



WILD GOOSE CHASE

...the end of the quest
for the perfect gift!

Visit our website: www.thewildgoosechase.com

and more! 1431 Beacon Street, Brookline, MA 02446 (617) 738-8020



Carolle Photography

Photography for the Performing Arts

headshots • productions • events • CDs • portraits

Kippy Goldfarb

617.426.9698 carollephoto@aol.com

566-1113

Flowers for
All Occasions

Flowers of Boston

In the Heart of the Medical Center

Peter Diamond
Aspasia Diamond

409 Brookline Ave.
(Cor. Longwood Ave.)
Boston, Mass. 02215

All Right Mailing



p (508) 652-0006

f (508) 652-0715

www.allrightmailing.com

89J Washington Avenue Natick, MA 01760

Superior Quality

Personal Touch

Highest Level of Service

State of the Art Equipment

First Class or Standard

Ink Jet Addressing

Metering

Mail Merge

Postal Discounts

CASS Certification

Data Entry

Fulfillment

Join us after the Show for
Cappuccino, Espresso & Latte

Desserts include

Pumpkin Cheese Cake,
Chocolate Fondant Cake,
Grilled Pineapple Crepes
& Deep Dish Apple Pie

Full Bar & Microbrews Available

Open till
12:30am



Longwood
GRILLE+BAR

Inn at Longwood
342 Longwood Avenue
Boston, MA 02115
617-731-4700

Planning a Party?
Call our Director of
Catering Today!

KFC
KFC
KFC
KFC
KFC
KFC
KFC
KFC

Like The Phoenix, rising...we've survived the fire!

kevin fennessy casting, inc.
a full service casting office casting principals, dayplayers,
extras, in film, commercials, corporate, industrials and theater

Credits include local casting for such films as:
THE HUMAN STAIN • MONA LISA SMILE • LIFT
WHAT'S THE WORST THAT COULD HAPPEN?
THE PERFECT STORM • ME, MYSELF AND IRENE

Classes and workshops in Acting and the Business of
Being a Performer for Adults, Teens, and Kids

Study with working professionals in a comforting,
supportive and challenging environment

Now housed in our new conveniently located Cambridge home:
25 Mount Auburn Street, Harvard Square, Cambridge, MA 02138
Phone: 617-547-1447 • Fax: 617-547-1420
Casting: kfcasting@aol.com • Classes: classes@kfcasting.com • www.kfcasting.com



The Jewish Community Day School
בית ספר יהודי קהילתי

A dynamic school community serving K through 8

where innovation meets tradition

www.jcdsboston.org

617-965-5100

HERITAGE FLAG CO., INC



28 Damrell Street
Boston, MA 02127

Local: 617.269.3524
toll free: 1.800.834.3524
fax: 617.269.6002
web: www.heritageflag.com

CUSTOM FLAGS AND BANNERS

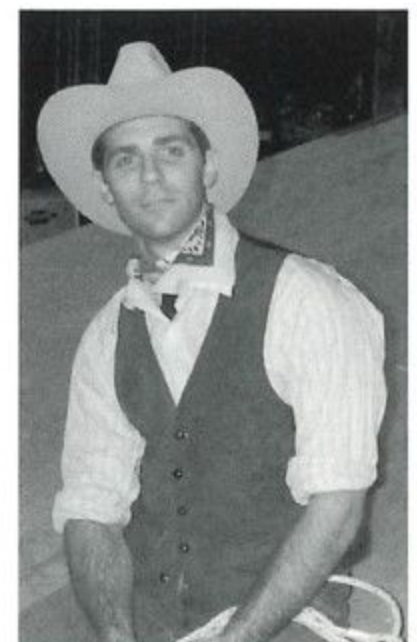


The Will Rogers Follies

A tribute to a true American hero

JANUARY 31 - FEBRUARY 23, 2003

In this
Tony award-winning
**BROADWAY
EXTRAVAGANZA,**
Will Rogers tells the
story of his life.



Great Food Great Coffee

**A winning
combination exclusively
at rebecca's cafe.**

411 BROOKLINE AVENUE, BOSTON MA 617.731.1300

Subscribe and Save!

If you're not already a subscriber, consider upgrading your individual ticket! Until *The Witch of Blackbird Pond* closes, we will credit the full amount of your ticket towards the purchase of a \$45 WFT subscription. Sit in the best seats for the best price and enjoy a long list of valuable benefits: guest ticket discounts, free ticket exchange, Circle of Friends, card for discounts at other area theatres, and more! And at the same time, why not become a WFT member? For an additional \$25, Members receive 10 percent off WFT classes during the school year, study guides for any production, free admission to special events, and discounts at the stores and museums featured below. Simply use the flyer in this program to take advantage of this great offer!

brookline booksmith

an independent bookstore for independent minds

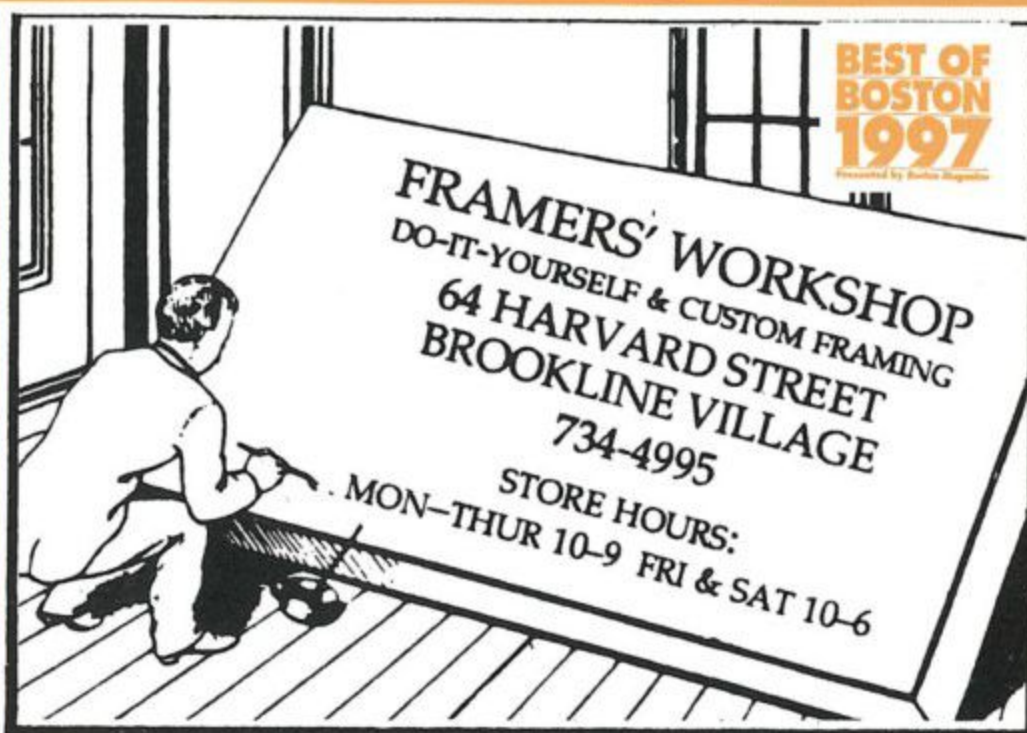
Your locally-owned
community bookseller
since 1961

books · journals · greeting cards · giftwrap
& other diverse delights for the literary lair

279 Harvard St. • Coolidge Corner • Brookline
617-566-6660 • www.brooklinebooksmith.com



The Children's Book Shop
237 Washington St. • Brookline
734 - 7323



▲▲▲▲▲▲▲
The
Children's
Museum
Boston

Voted
one of the
three best
Children's
Museums
by *Child Magazine!*

Museum of Science
It's Alive!™

Wheelock Family Theatre Education Program

**10% tuition discount
for WFT Members**

Become a Member today, and get 10% off the
WFT First Night Workshop and Procession: 12/28 &
12/31. (See inside front cover for more details.)

WFT is supported in part by grants from the Actors' Equity Foundation, Boston Cultural Council, The Boston Foundation Fund for Arts and Culture, FleetBoston Financial Foundation, Haymarket Community Corporation, The Massachusetts Cultural Council, The Peabody Foundation, The Sidney and Esther Rabb Charitable Foundation, Roche Bros. Supermarkets, State Street Global Philanthropy Program, Wheelock College, and VSA arts of Massachusetts.

The Wheelock Family Theatre is dependent on performance income and contributions. Your support is needed to sustain the Theatre. Contributions are tax deductible to the extent allowable by law and may be sent to the Wheelock Family Theatre, 200 The Riverway, Boston, MA 02215-4176.

It's the least we can do
for the people who've
done the most.

CITIZENS BANK IS PROUD TO SUPPORT
THE WHEELLOCK FAMILY THEATRE.

Thank you for going above and beyond
to provide innovative theatre and
casting diversity for everyone to enjoy.



CITIZENS BANK

Not your typical bank.