



Get ready to see

THE SPONGEBOB MUSICAL

at Wheelock Family Theatre at Boston University

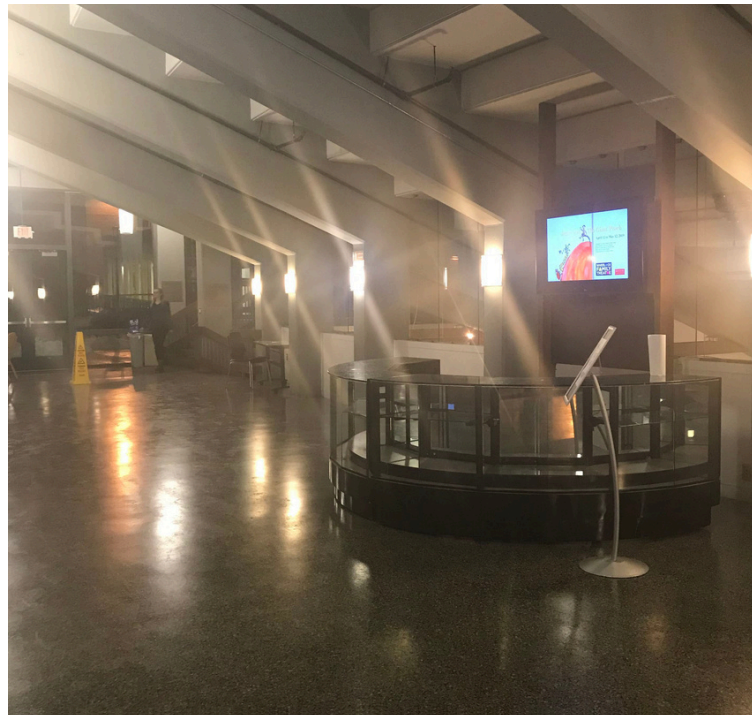
A social story to help families prepare for a visit to the theater



I am going to see a play called
THE SPONGEBOB MUSICAL at Wheelock
Family Theatre at Boston University.



When I get to the theater, we will walk
through the lobby.



It might be crowded.

I can take deep breaths and be patient
as we move through the crowd.



In a play, people on stage tell a story -
right in front of us!

These people are called actors.

In this play, a musical, they will sing and
dance!



When I sit down in the theater I will see
the set. A set is an imaginary place,
built on the stage, to show where the
story happens.



The set for this play spins and moves
to become different places



We can be in a pineapple house, in the
town of Bikini Bottom, or on top of a
volcano!



This play is based on a cartoon TV show called *SpongeBob SquarePants*.

I may know this show and have seen it before.



Instead of the characters being drawn cartoons, they are played by real people!



Some parts of the story are from the TV show. It is interesting to see the same story on stage!



Some parts will be new and different!

It may be disappointing if things change, but I can talk about this with the people I came with!



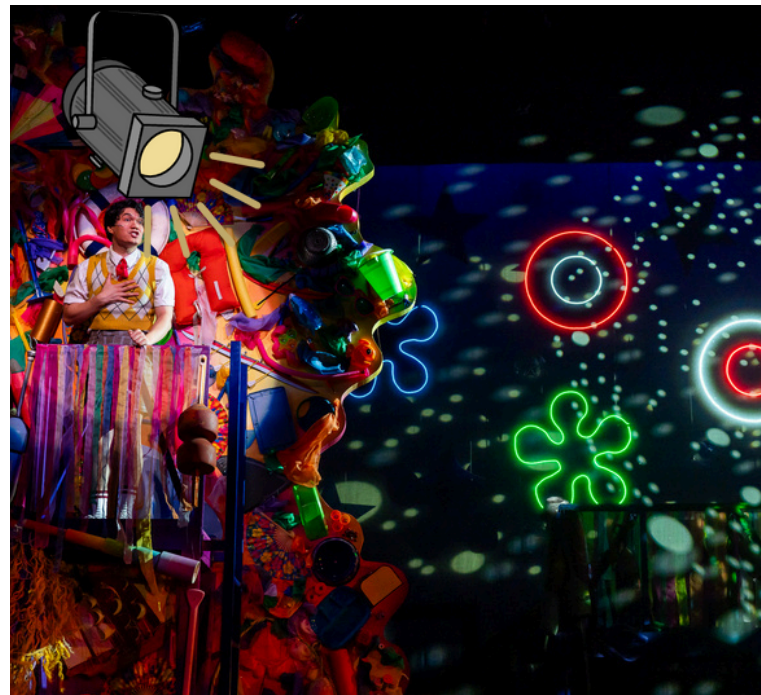
This show uses sound effects that are done by someone called a Foley Artist.

This person sits on stage and makes them happen when the actors move!



The play also has some bright lights.

If I want to, I can wear sunglasses or cover my eyes!



This play will use loud sounds.
Sometimes the characters will yell.

If it is too loud for me I can always
cover my ears...



...I can hug or hold hands with the
people who came with me to the
theater.



If I need a break I can go into the lobby...



...or to a quiet, cozy space nearby.



If I need something to hold onto I can ask an usher for a squishy toy.



I will know that the play is about to start when the lights in the room get darker and the lights on the stage get brighter.

The audience will get very quiet. It is important that I try to be quiet during the show so the play can be heard.



This play is about a sea sponge named SpongeBob who lives in a pineapple under the sea in a town called Bikini Bottom.



He has a best friend named Patrick who is a sea star!

Patrick sometimes feels like no one listens to him.



His other best friend is a squirrel named Sandy.

It's hard sometimes for Sandy to be a land animal under the sea.



SpongeBob works as a fry cook at a restaurant called The Krusty Krab.

He makes burgers there!



SpongeBob's boss is a crab named Mr. Krabs who loves money.

Mr. Krabs has a daughter named Pearl who is a whale. Pearl loves music! Especially the Electric Skates.



SpongeBob has a neighbor and coworker named Squidward who loves to tap dance and play the clarinet.

He can be grumpy sometimes.



The Krabby Patty has a competitor restaurant called The Chum Bucket.

Many people don't think their food is very good.



The Chum Bucket is run by a plankton named Plankton.

He wants everyone to like his restaurant and stop eating Krabby Patties.



Plankton has a wife named Karen.

She is a computer.

They argue sometimes but also love each other very much.



There are also some other characters to meet!

One is the French Narrator who helps to tell the story.



I will hear him, not see him.

We also meet Patchy the Pirate!

He is SpongeBob's biggest fan!

Patchy has many pirate friends who come join the show, too!



In the show, there may be moments that are scary.

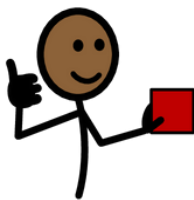
The people in Bikini Bottom find out that a volcano may explode and destroy the town!



There will be loud rumbles from the mountain and people will act like the ground is really moving and pretend to be very scared.



I know that this is just pretend for the show and everyone is safe.



There will be a kind of theatrical smoke called Haze in this show.

Haze is made by a special machine.
There is no fire and I am safe.



Sometimes, actors from the show will appear in the audience.

I can see what they look like up close!



This show also uses confetti and bubbles. They may come near me in the audience.

They are very safe. I can touch them if I want to. I can also let them fall.



If anything else in the story makes me feel sad or mad or scared, I can ask an adult for support.

I can also take a deep breath or take a break.



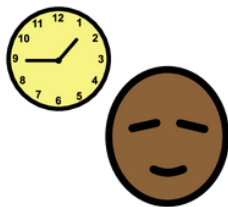
At the end of a scene or song some people will clap. Clapping tells the actors that I liked their performance.

If I want to clap I can.

If I don't want to clap I don't have to.



This play has an intermission.



This is a break in the play. It is a good time for me to use the bathroom.



I can also get a drink of water or have a snack during this break.



At the end of the play, all of the actors will come out on stage and bow. This is called a curtain call.



I can clap. Clapping tells the actors I liked the show.

If I really like the show I can stand up and clap. This is called a standing ovation.



After I move through the lobby, I will leave Wheelock Family Theatre at Boston University.



Going to the theater is very exciting!
I hope I will have a great time when I go to see *THE SPONGEBOB MUSICAL*.



For more information about access and inclusion at Wheelock Family Theatre at Boston University please contact Jeri Hammond, Director of Education, Outreach, and Community Engagement, at JeriH@bu.edu or 617-353-1459.

